



PC-20-22 (Trace PA 1B Section C)

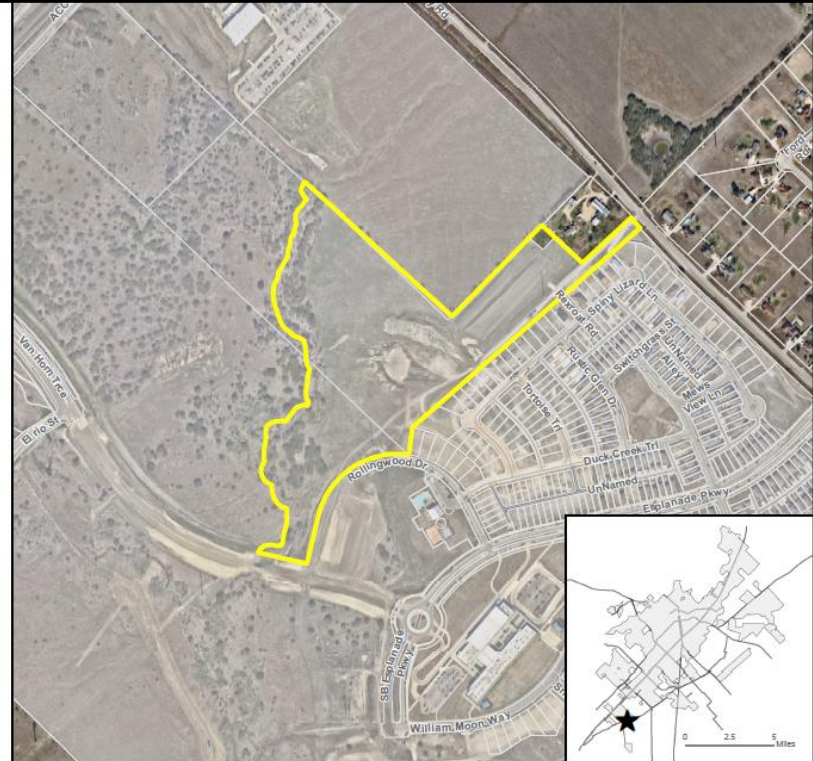
Consider a request by Caren Williams-Murch, on behalf of Highpoint Trace, LLC, to approve a Final Subdivision Plat, consisting of approximately 28.453 acres, more or less, out of the William H. Van Horn Survey generally located at the intersection of Shugart Street and Rollingwood Drive. (A.Villalobos)

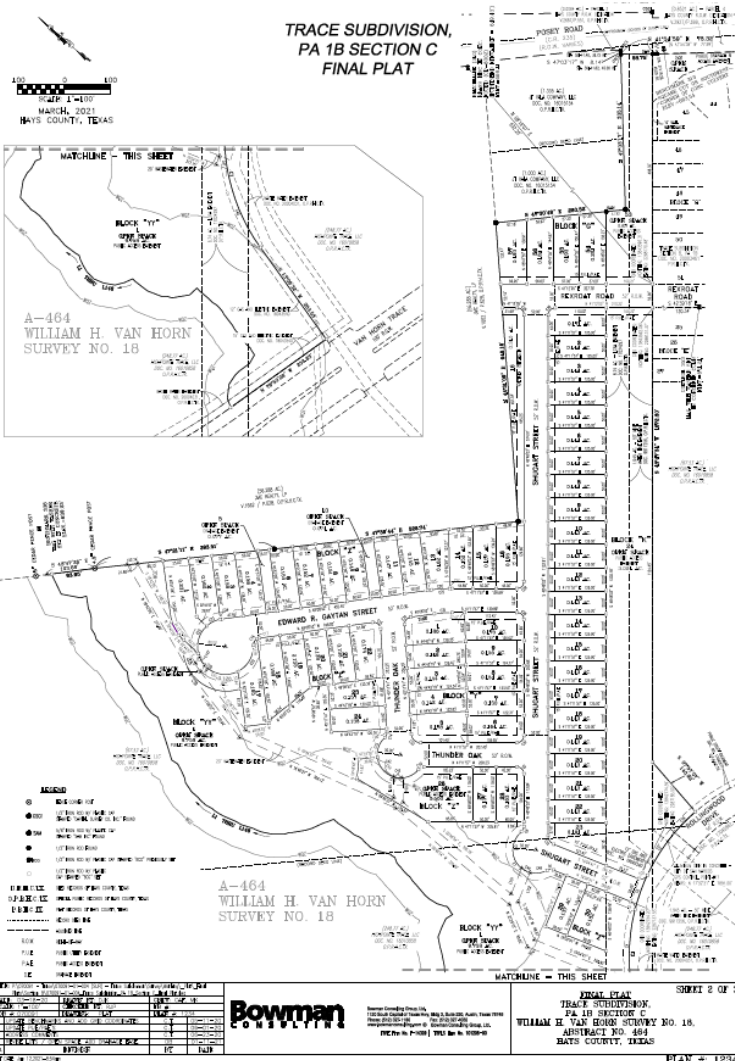


Location:

- Proposing 72 total lots (64 single family and 8 open space lots)
- Located in the Trace Planned Development District (PDD)
- Low Intensity designation on the Comprehensive Plan
- Surrounding uses include single-family, vacant land, and parkland

PC-20-22
Aerial View
Trace Subdivision: Planning Area 1B Section C - 5818 S. Old Bastrop Hwy







Recommendation

Staff recommends approval of the request as presented.