

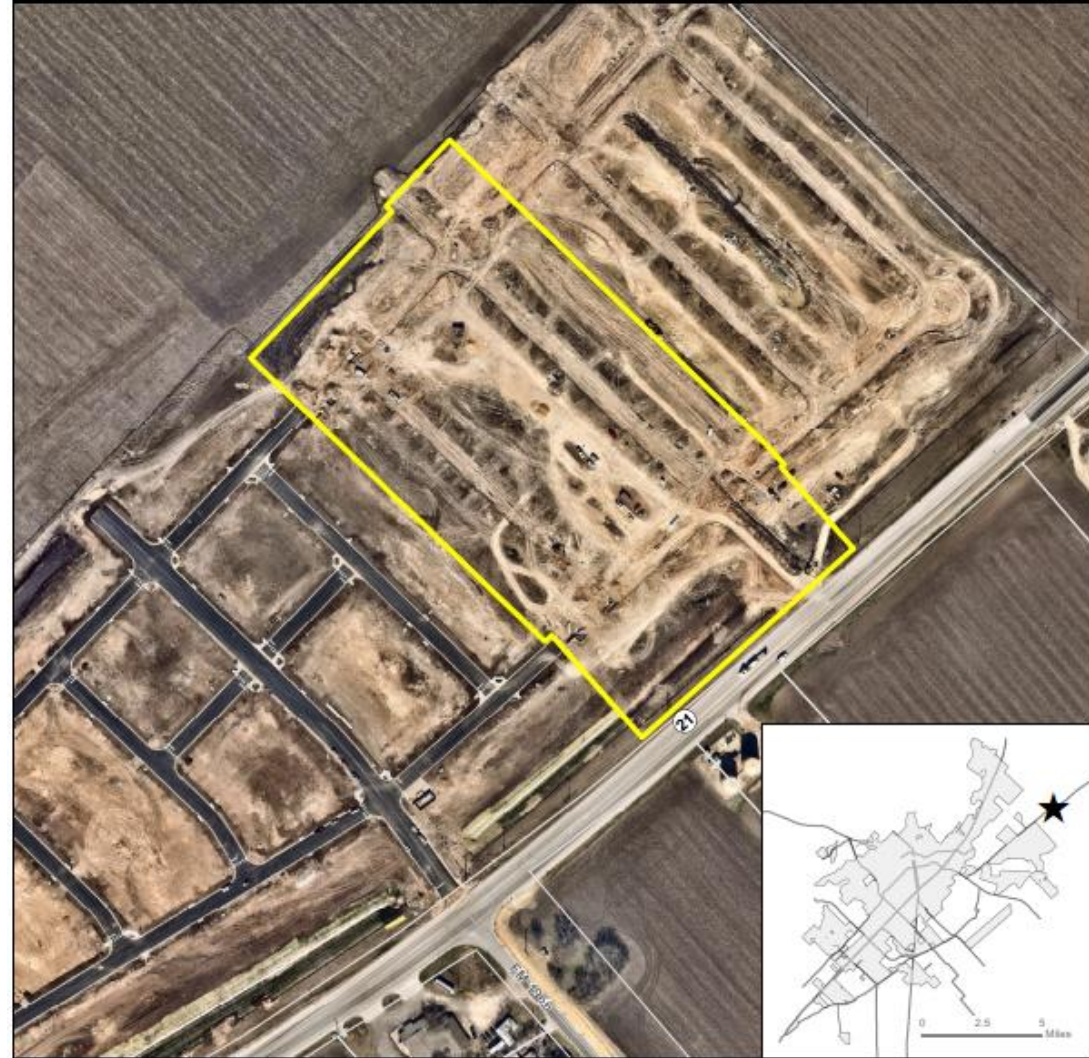
PC-19-36 (Hymeadow, Section 3, Phase 1)

Consider a request by Binkley & Barfield, Inc, on behalf of Arroyo Cap II-1, LLC for approval of a Final Plat for approximately 13.128 acres, more or less, out of the William Hemphill Survey, Abstract 221, located northeast of Yarrington Road, along State Highway 21, Hays County, Texas .(A. Brake)

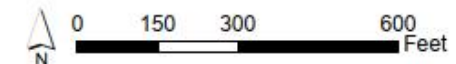
Location and History:

- +/- 13.128 acres
- In ETJ – no zoning
- Proposes 81 single family lots with two open space lots

PC-19-36 Aerial View Hymeadow Section 3, Phase 1, Final Plat

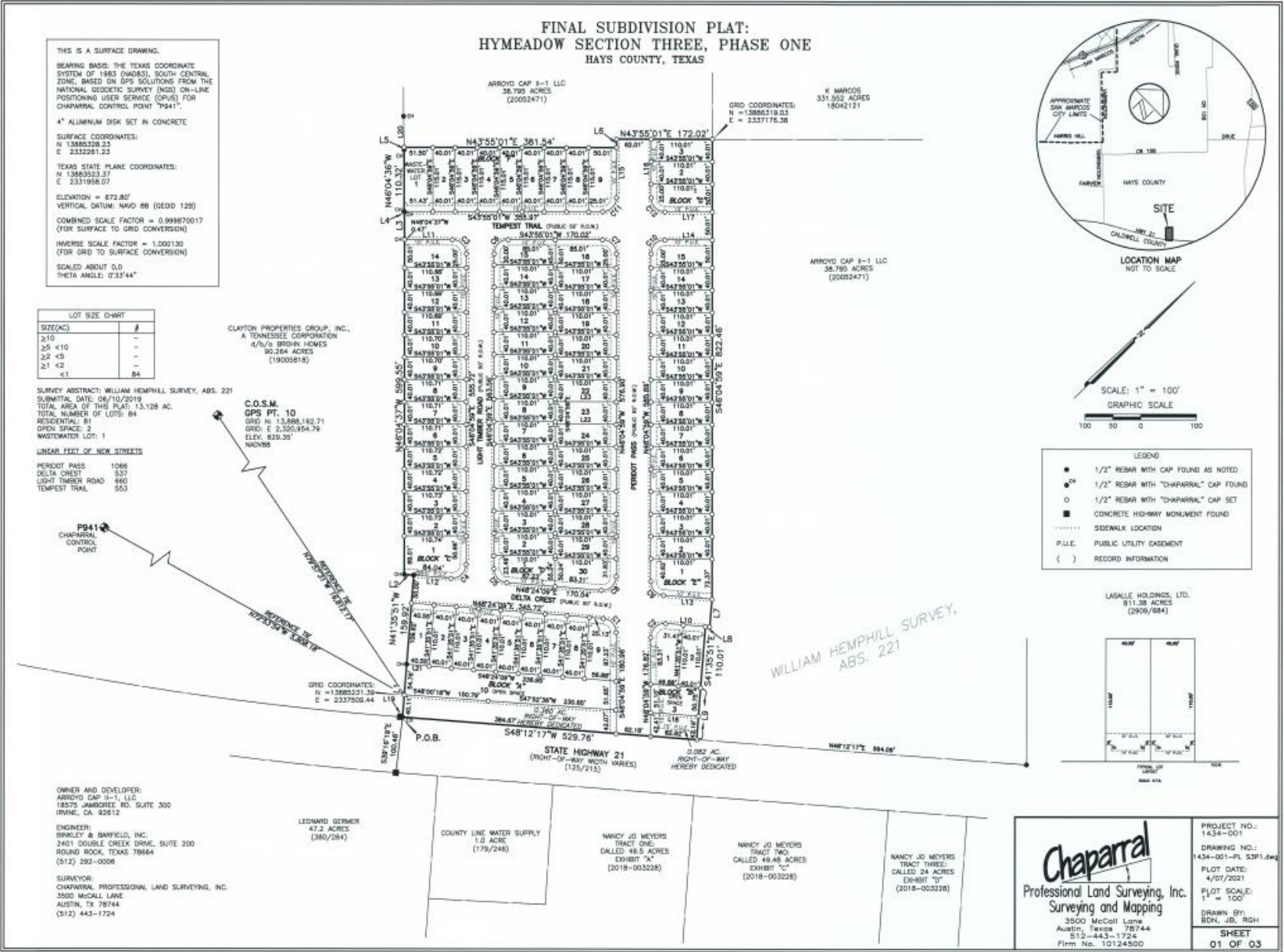


- ★ Site Location
- Subject Property
- Parcel
- City Limit



This product is for informational purposes and may not have been prepared for or be suitable for legal, engineering, or surveying purposes. It does not represent an on-the-ground survey and represents only the approximate relative location of property boundaries. Imagery from 2017.

Map Date: 4/29/2021



Recommendation:

Staff has reviewed the request and determined the Final Plat meets all requirements of Section 3.2.3.4 of the Development Code and recommends **approval** of PC-19-36.