

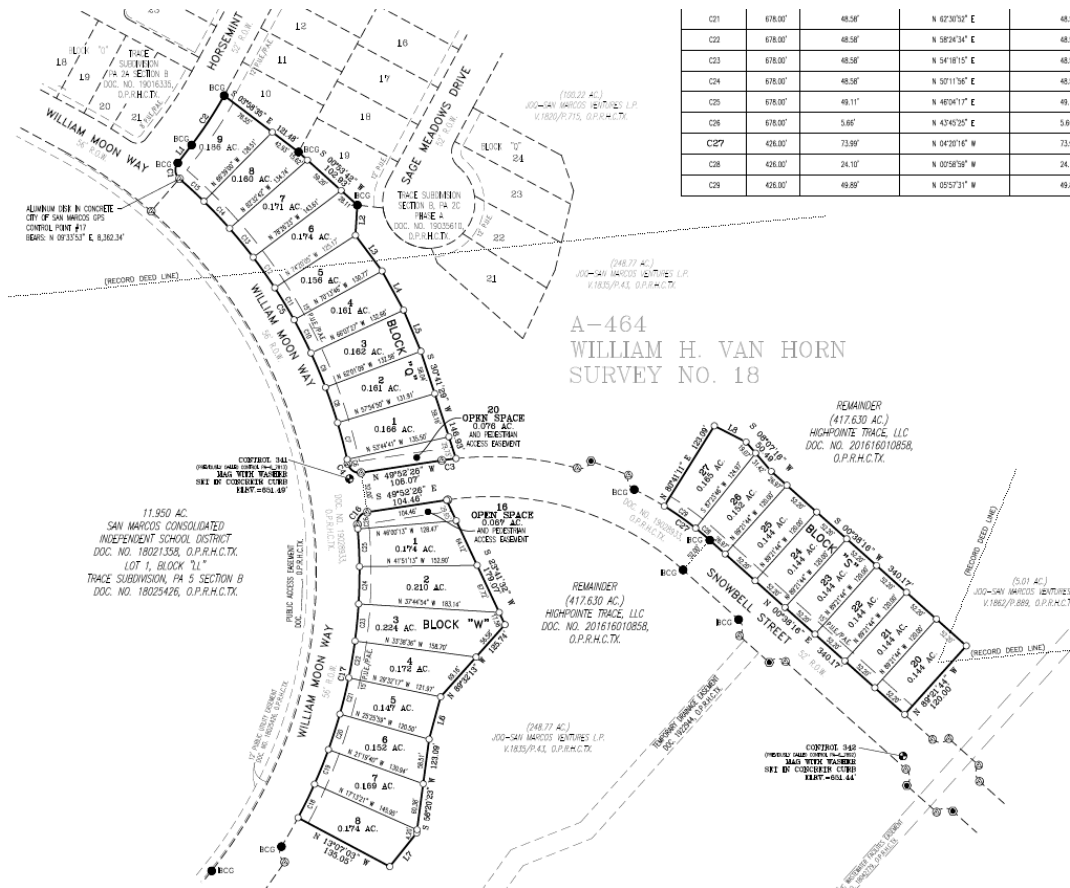
## **(PC-20-68) Trace Planning Area 6A Section D**

Consider a request by Caren L. Williams-Murch, on behalf of Highpointe Trace, LLC, for a Final Plat of approximately 4.243 acres, more or less, out of the William H. Van Horn Survey located at the intersection of William Moon Way and Snowbell Street.

- +/- 4.243 acres
- Single Family Subdivision
  - 25 Residential Lots
  - Two Open Space Lots

PC-20-68  
Aerial View  
Trace 6A Section D Final Plat





## **Recommendation:**

Staff has reviewed the request and determined the request complies with the San Marcos Development Code and recommends **approval** of PC-20-68 as submitted.