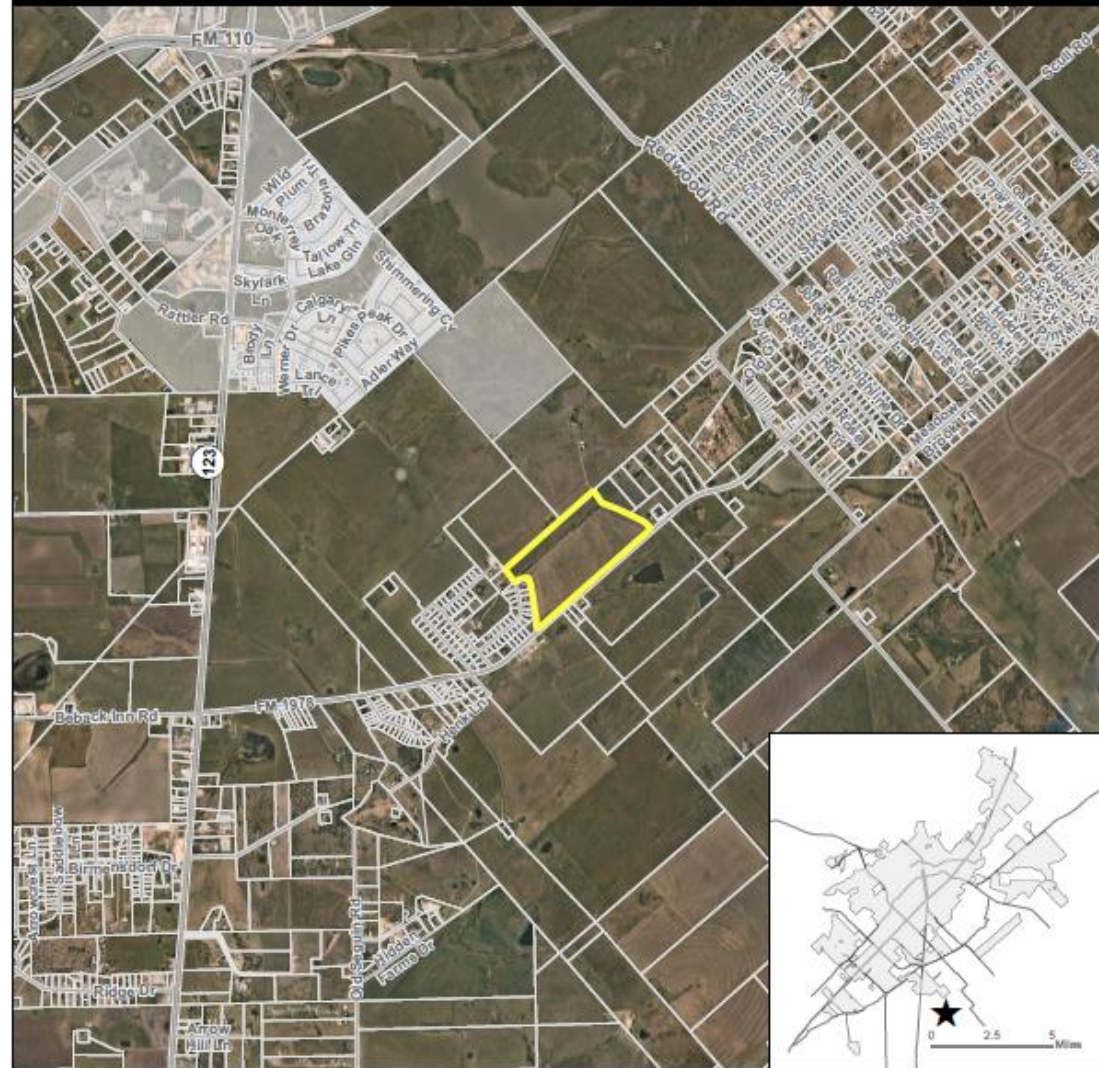


## **(PC-19-64) Flemming Farms**

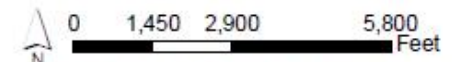
PC-19-64 (Flemming Farms) Consider a request by Dan Ryan, P.E. on behalf of Clint Jones, for a Preliminary Plat consisting of 334 residential lots on 64.32 acres, more or less, out of the Andrew Mitchell League Survey No. 62, abstract No 222, located near the intersection of FM 1978 and Skyline Ridge Road. (W. Parrish)

- +/- 64.32 acres
- Single Family Subdivision
  - Located in the ETJ
  - 334 units
- Parks Board 11/19/2020
  - Must dedicate at least 2.75 acres of parkland (owned and maintained by HOA)
  - Remainder may be paid by fee-in-lieu.

# PC-19-64 Aerial View Flemming Farms Preliminary Plat

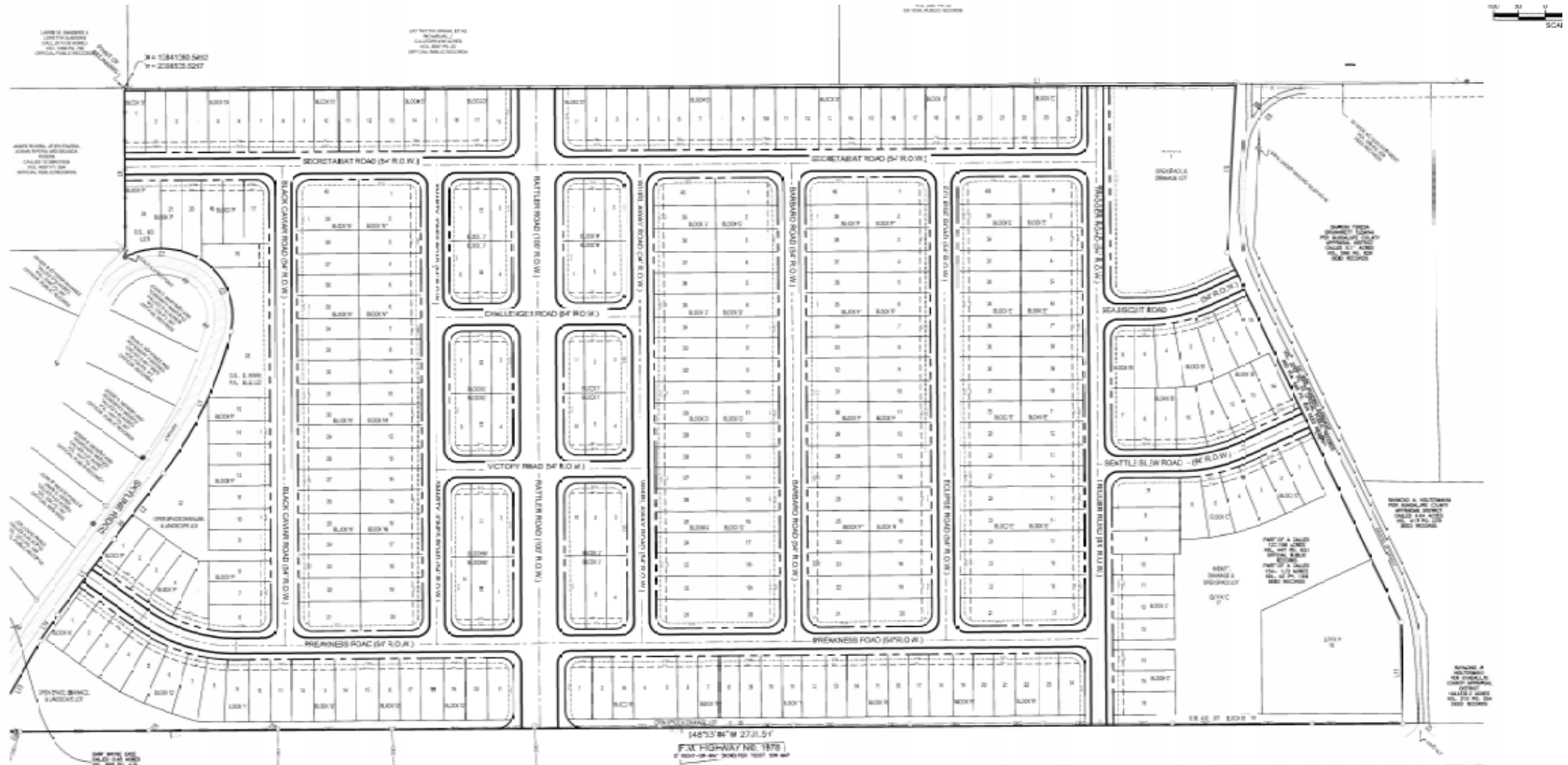


- ★ Site Location
- Subject Property
- Parcel
- City Limit



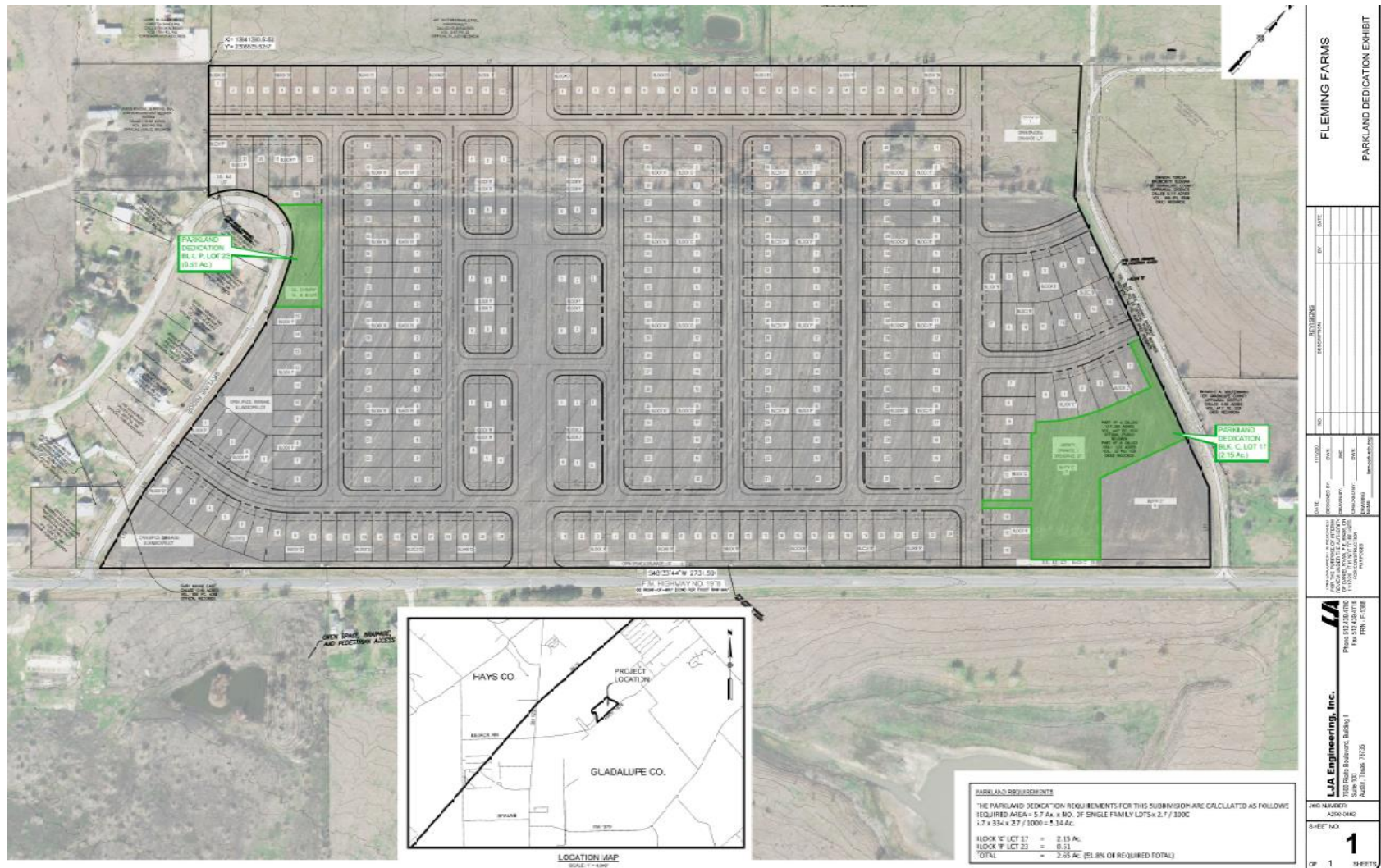
This product is for informational purposes and may not have been prepared for or be suitable for legal, engineering, or surveying purposes. It does not represent an on-the-ground survey and represents only the approximate relative location of property boundaries. Imagery from 2017.

Map Date: 11/17/2020





## Potential Pocket Parks



## Recommendation:

Staff has reviewed the request and recommends approval as submitted.