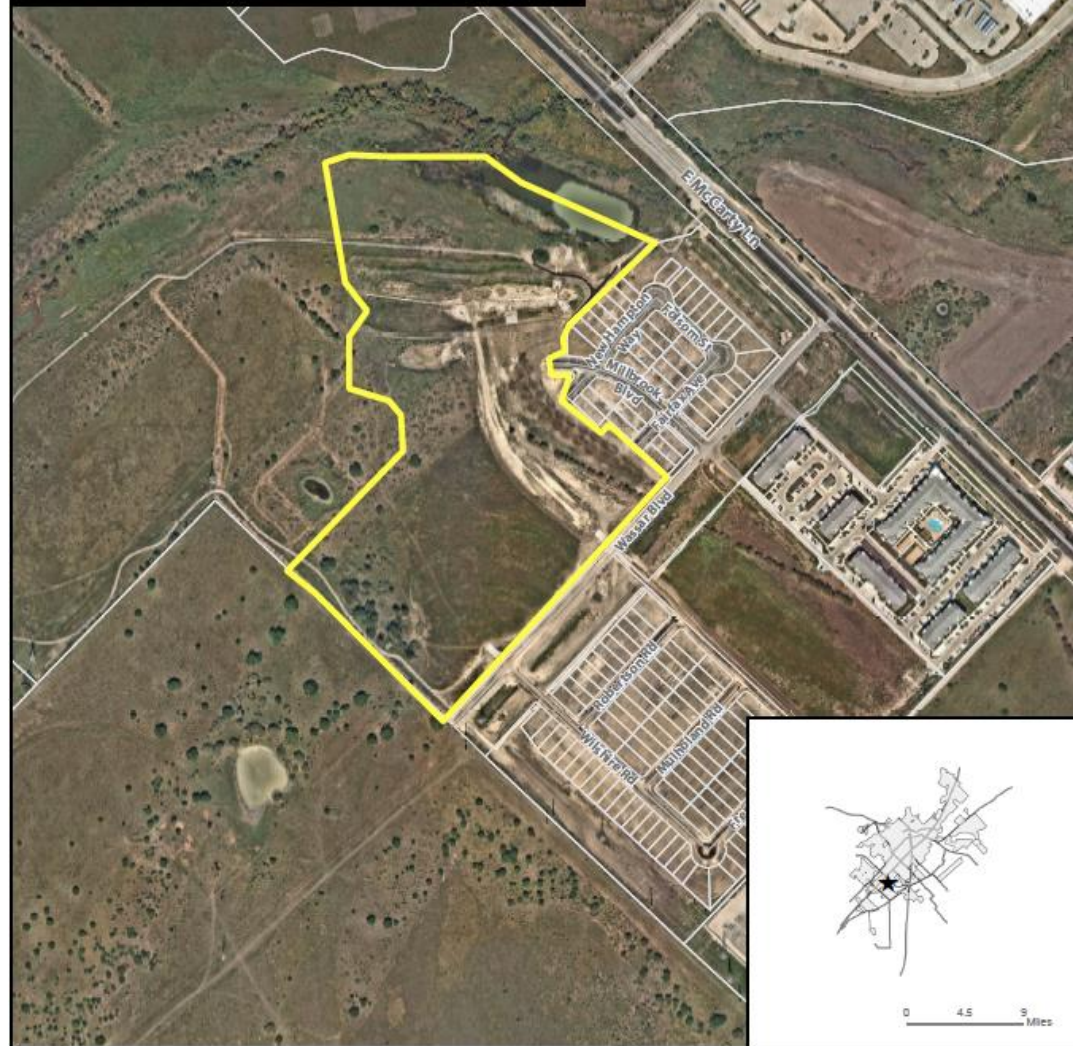





## **PC-20-18 (Millbrook Park Phase 2)**

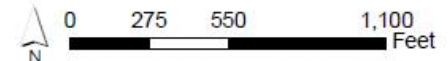
Consider a request by BGE, Inc., on behalf of Forestar (USA) Real Estate Group Inc., to approve a Final Plat, consisting of approximately 32 acres, more or less, out of the Cyrus Wickson Survey, No 474 and the Nathaniel Hubbard Survey, No 230.  
(W. Parrish)

- +/- 32 acres
- 127 residential lots
- McCarty Commons PDD
- Subdivision Improvement Agreement and Surety Bond required for Public Improvements.
  - Allows applicants to construct public improvements at the same time as private lots are developed.
  - Developer is required to provide surety in the amount of 125% of required public improvements.

**PC-20-18  
Aerial View  
Millbrook Park Phase 2**



-  Subject Property
-  Parcel
-  City Limit



This product is for informational purposes and may not have been prepared for or be suitable for legal, engineering, or surveying purposes. It does not represent an on-the-ground survey and represents only the approximate relative location of property boundaries. Imagery from 2017.

Map Date: 11/20/2020



## Recommendation:

Staff has reviewed the request and determined the request complies with the San Marcos Development Code and recommends **approval** of PC-20-18 as submitted.