

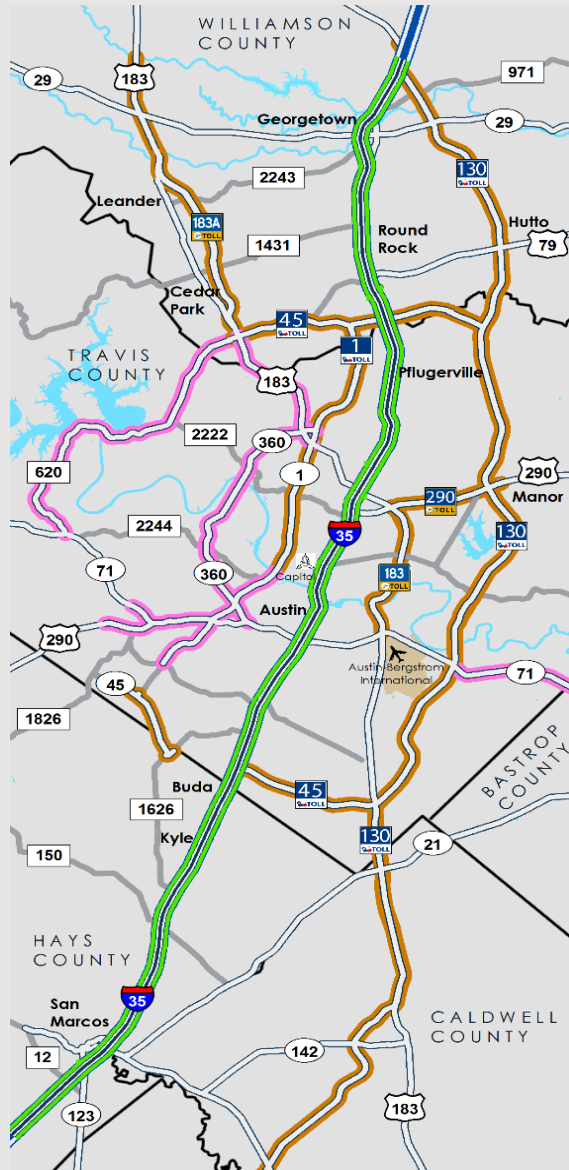


San Marcos City Council Meeting

Tony Estes, P.E.
Mobility35 Schematic Task Lead

Oct. 7, 2020

About the Mobility35 Program



- Regionwide effort on 79 miles of I-35 through Williamson, Travis, and Hays
- 100 Most Congested Roadways in Texas:
 - #2 – I-35 from US 290 to SH 71
 - #10 – I-35 from SH 71 to Slaughter Lane
 - #65 – I-35 from RM 1431 to SH 45N/Louis Henna Boulevard
 - #78 – I-35 from Slaughter Lane to SH 45SE
 - #83 – I-35 from Parmer Lane to US 290E
- 30+ projects in Mobility35 Program
 - \$8 billion in construction costs for active or future projects
 - 20+ contracts totaling ~\$90 million in environmental and design

Mobility35 Snapshot (Active Projects)



- Williamson County
 - 4 projects in schematic/environmental
 - 1 projects in PS&E
 - 4 projects in letting/construction
- Travis County
 - 3 projects in schematic/environmental
 - 2 projects in PS&E
 - 4 projects in letting/construction
- Hays County
 - 1 project in schematic/environmental
 - 2 projects in PS&E
 - 3 project in letting/construction

<http://www.my35.org/capital.htm>



I-35 from RM 150 to Kyle Crossing



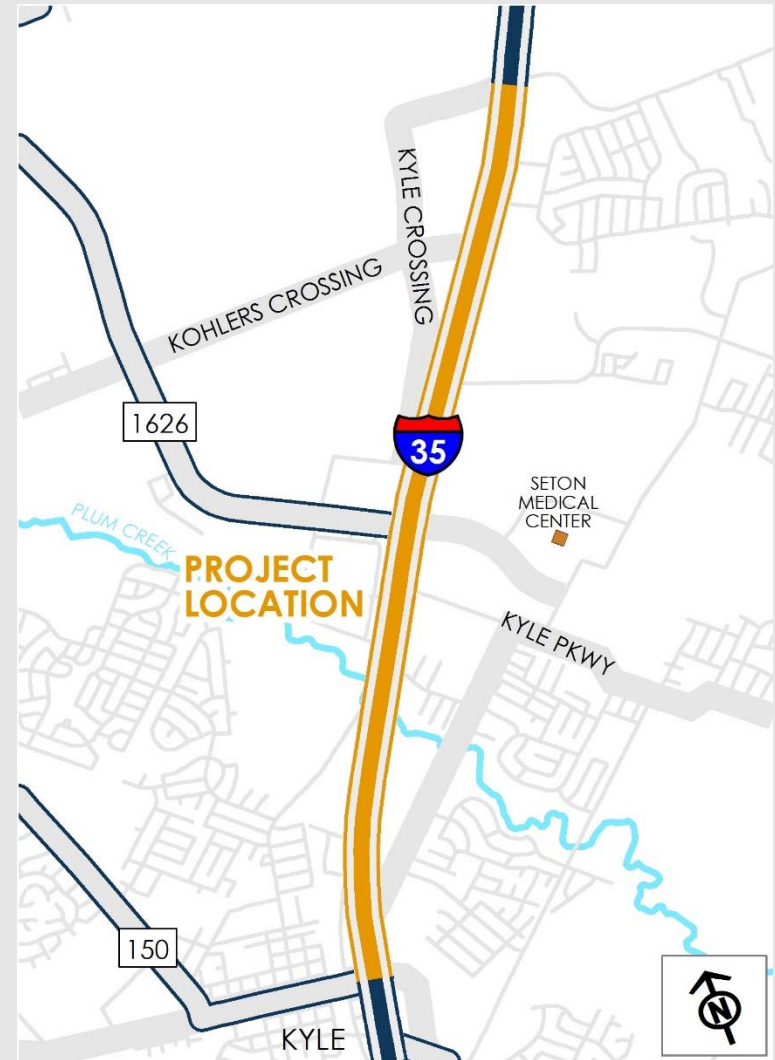
■ Project details:

- Reverse four northbound I-35 ramps
- Construct entrance/exit lanes along the northbound frontage road
- Reconstruct the existing northbound frontage road and build a new bridge over Plum Creek

■ Construction cost: \$21.9 million

■ Schedule:

- Construction start: September 2020
- Construction completion: early 2022





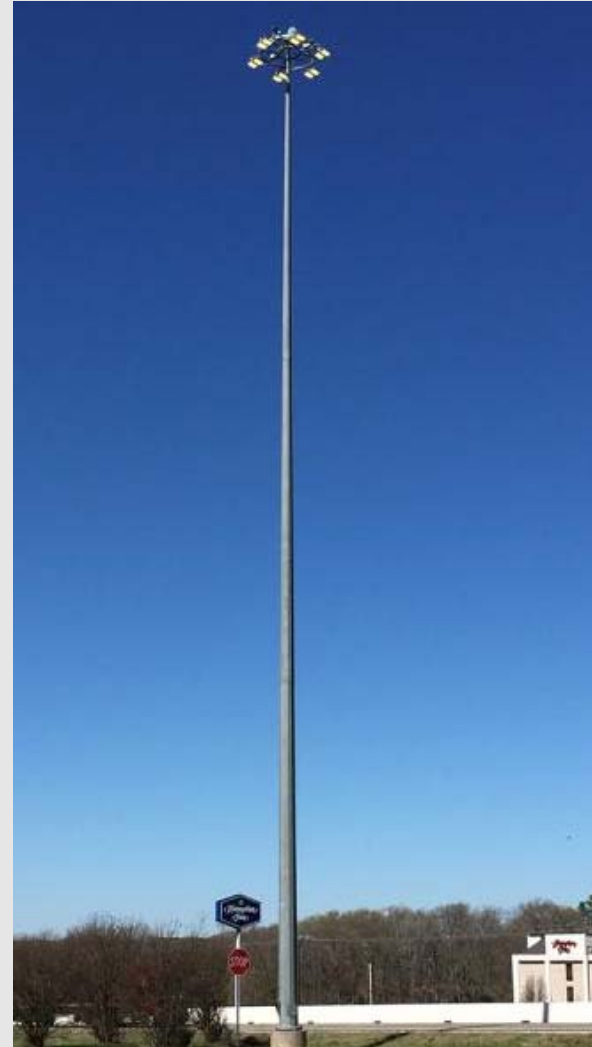
- **Project details:**

- Safety Improvements: High Mast Illumination Installation

- **Estimated construction cost:**
\$3.7 million

- **Anticipated schedule:**

- Construction start: mid-2021
 - Construction completion: mid-2023



I-35 from south of Loop 82 to north of River Ridge Parkway



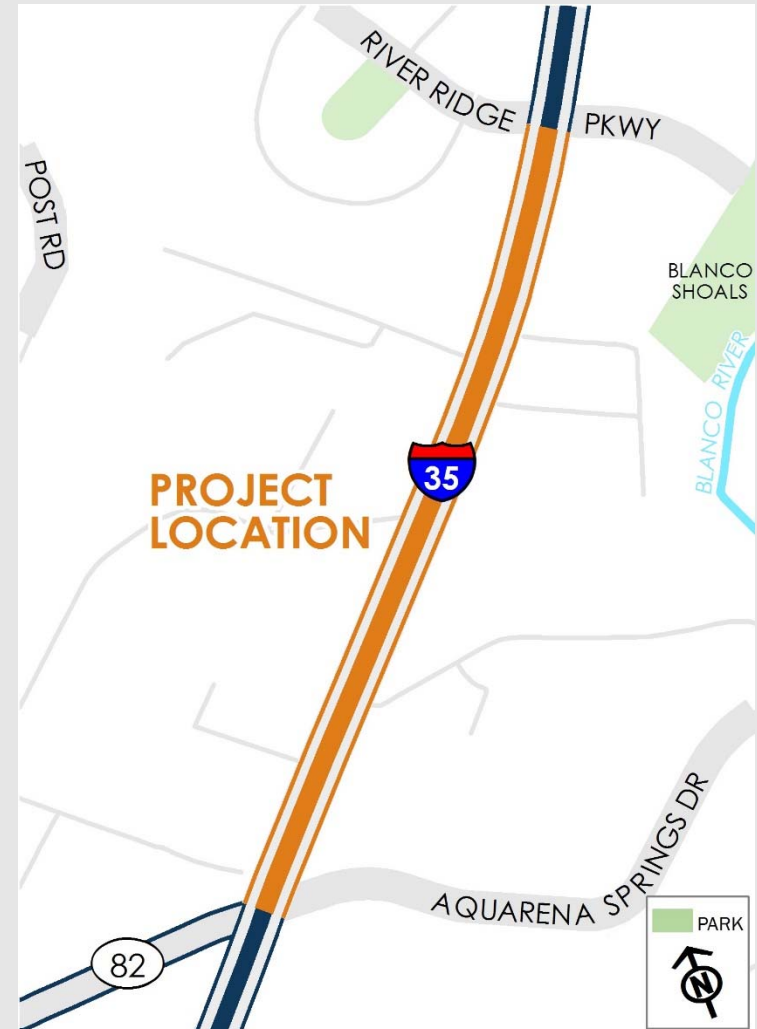
■ **Project details:**

- Construct northbound exit ramp to River Ridge Parkway
- Relocate existing northbound entrance ramp south of River Ridge Parkway
- Reconstruct the northbound frontage road

■ **Construction cost:** \$14 million

■ **Schedule:**

- Construction start: late 2020
- Construction completion: mid-2022



I-35 at SH 123



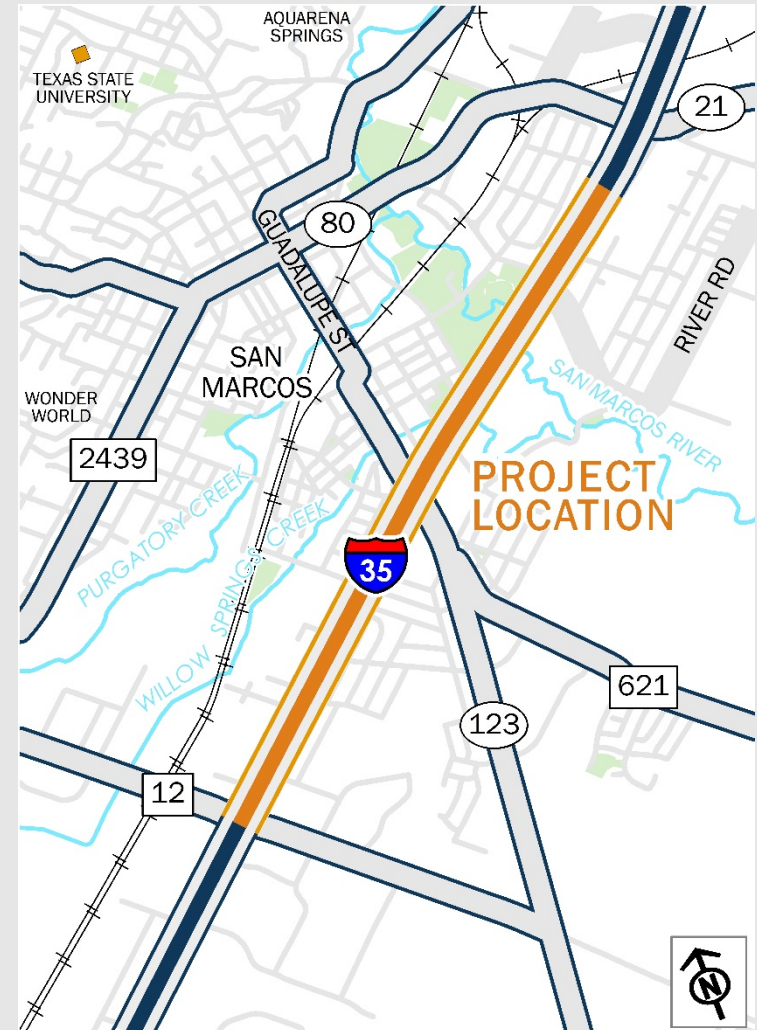
■ **Project details:**

- Reconstruct mainlanes and bridge over SH 123
- Reverse and realign entrance/exit ramps
- Reconstruct portions of the frontage road
- Rebuild and widen frontage road bridges

■ **Estimated construction cost:** \$107 million

■ **Anticipated schedule:**

- Construction start: late 2021
- Construction completion: late 2023



I-35 at Posey Road



- **Project details:**

- Reconstruct and reconfigure Posey Road bridge
- Add U-turn lanes in both directions at Posey Road
- Reverse six entrance/exit ramps
- Convert frontage roads to one-way (completed March 2019)

- **Construction cost:** \$31.7 million

- **Schedule:**

- Construction completion: late 2021



I-35 at Posey Road



■ Current work:

- Construct southbound I-35 overpass lanes
- Widen Posey Road at I-35
- Construct designated turn lanes to/from Posey Road
- Complete northbound Posey Road exit and new southbound York Creek Road entrance ramp

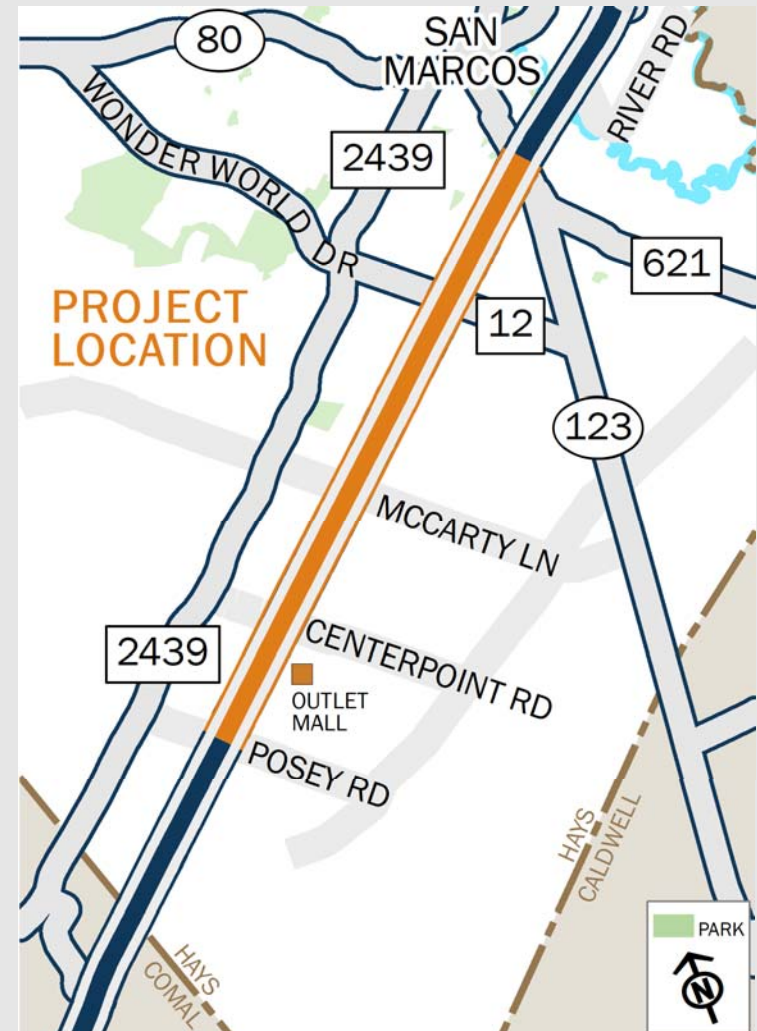


I-35 from SH 123 to Posey Road

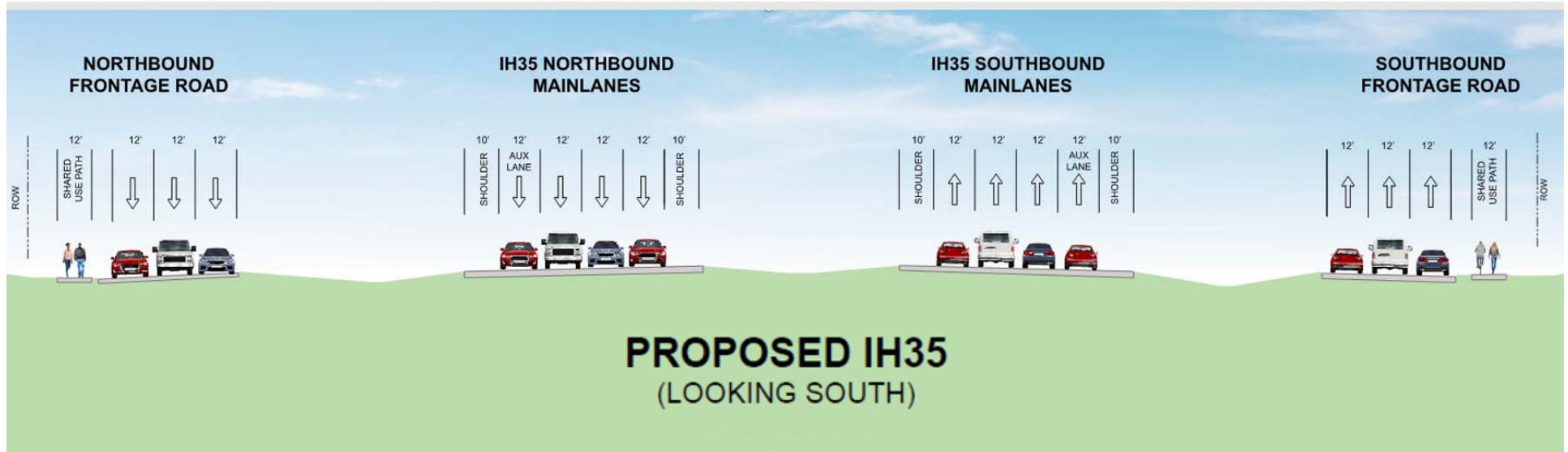
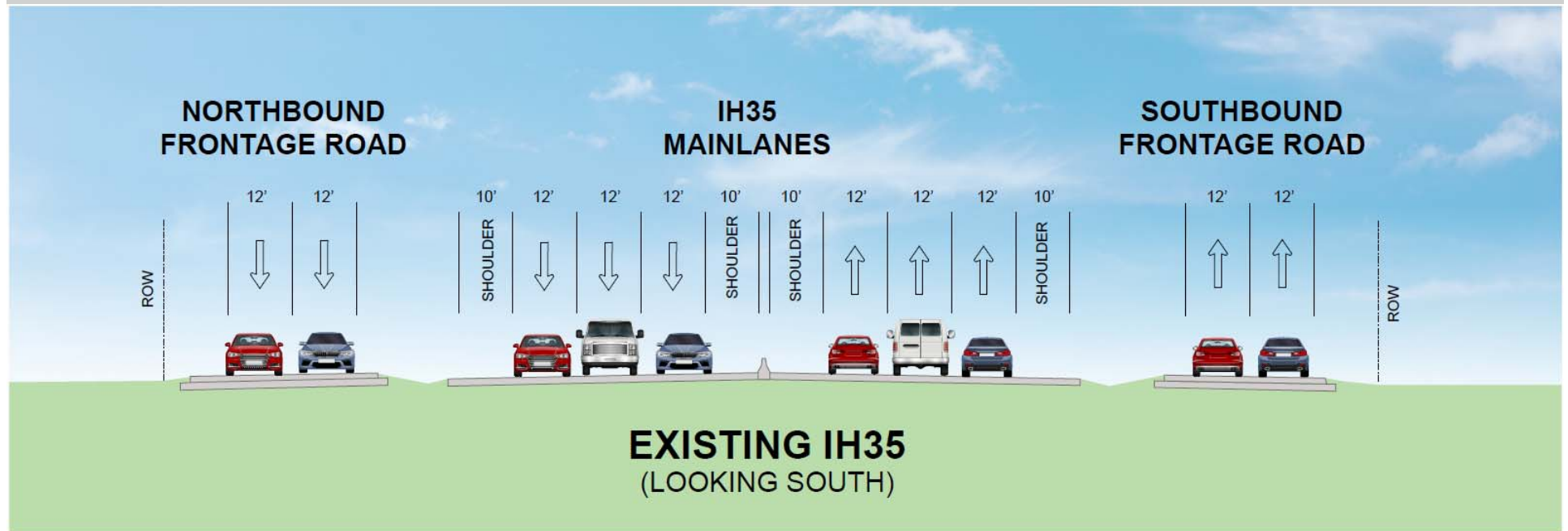


■ Project details:

- Reconstruct mainlanes and frontage roads
- Add capacity and shift the northbound and southbound I-35 frontage roads
- Add extended entrance/exit lanes along the I-35 mainlanes and frontage roads
- Reverse entrance/exit ramps
- Improve the I-35 intersections at Wonder World Drive, McCarty Lane and Centerpoint Road
- Improve bicycle and pedestrian paths



I-35 from SH 123 to Posey Road





■ **Project Timeline***

- Environmental study - ongoing
- Complete PS&E - 2025
- Construction start: 2026
 - *Project currently unfunded for construction*

**Timeline subject to change*



THANK YOU

