

PC-19-41 (Trace Section A, PA 12)

Consider a request by Caren Williams-Murch, on behalf of Highpoint Trace, LLC, to approve a Final Plat, consisting of approximately 21.758 acres, more or less, out of the William H. Van Horn Survey. (T. Carpenter)

- +/- 21.758 acres
- One multifamily lot and two open space lots.
- Trace PDD

**PC-19-41
Aerial View
Trace Section A, PA 12
Final Plat**

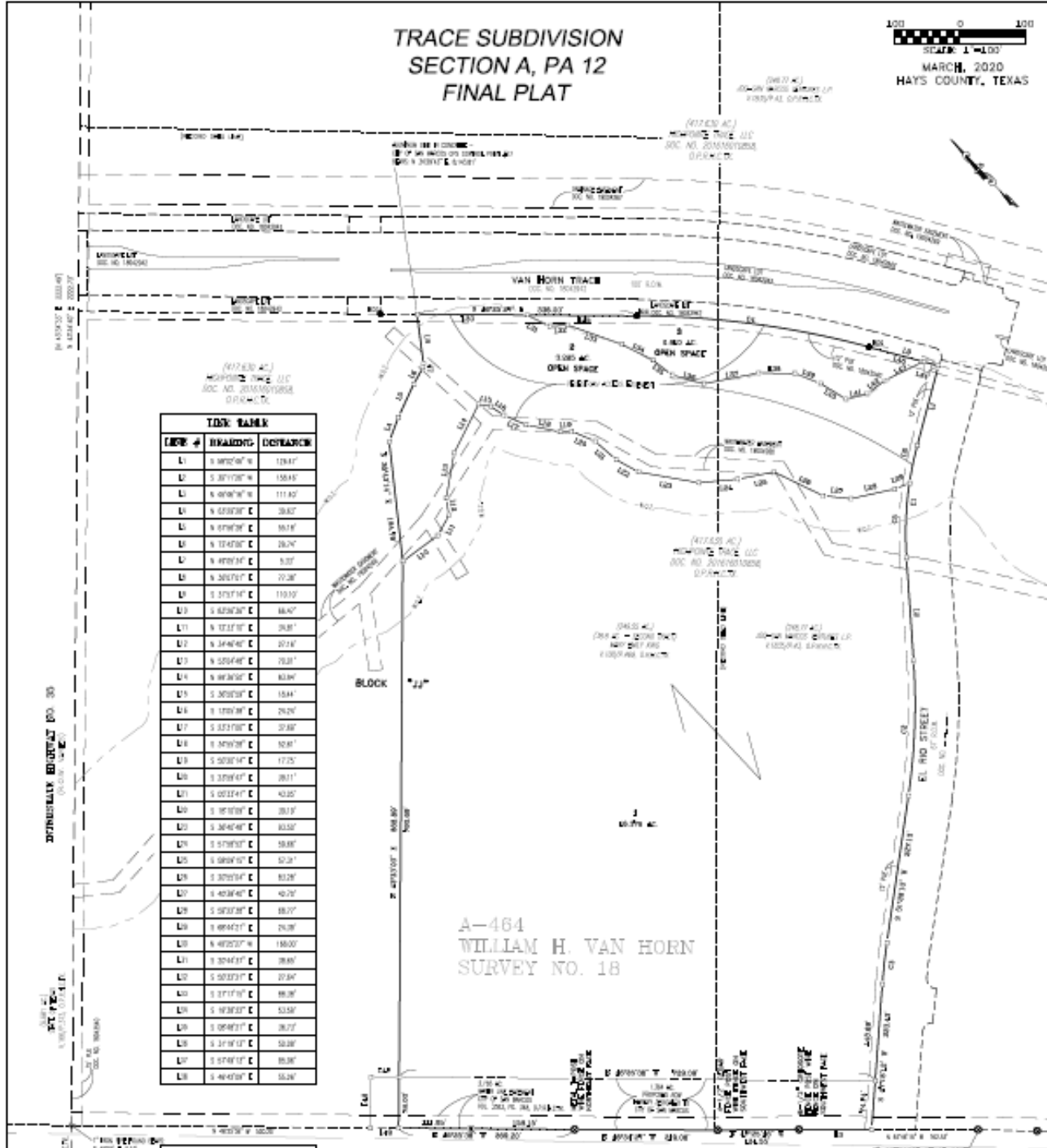


TRACE SUBDIVISION SECTION A, PA 12 FINAL PLAT

100 0 100
SCALE: 1"=100'
MARCH, 2020
HAYS COUNTY, TEXAS

LINE #	BEARING	DISTANCE
L1	S 89°00'00" W	150.00
L2	S 87°12'00" W	150.00
L3	S 85°00'00" W	111.82
L4	S 82°00'00" E	30.00
L5	S 87°00'00" E	50.00
L6	S 75°00'00" E	25.00
L7	S 85°00'00" E	5.00
L8	S 20°00'00" E	25.00
L9	S 37°00'00" E	110.00
L10	S 82°00'00" E	16.00
L11	S 12°00'00" E	30.00
L12	S 34°00'00" E	20.00
L13	S 55°00'00" E	20.00
L14	S 80°00'00" E	30.00
L15	S 30°00'00" E	15.00
L16	S 15°00'00" E	25.00
L17	S 57°00'00" E	37.00
L18	S 30°00'00" E	10.00
L19	S 50°00'00" E	17.75
L20	S 35°00'00" E	20.00
L21	S 60°00'00" E	40.00
L22	S 10°00'00" E	30.00
L23	S 30°00'00" E	30.00
L24	S 57°00'00" E	50.00
L25	S 50°00'00" E	57.27
L26	S 37°00'00" E	80.00
L27	S 40°00'00" E	40.00
L28	S 50°00'00" E	15.00
L29	S 80°00'00" E	20.00
L30	S 40°00'00" E	150.00
L31	S 30°00'00" E	30.00
L32	S 50°00'00" E	27.00
L33	S 17°00'00" E	80.00
L34	S 10°00'00" E	50.00
L35	S 50°00'00" E	20.00
L36	S 37°00'00" E	30.00
L37	S 57°00'00" E	80.00
L38	S 40°00'00" E	15.00

A-464
WILLIAM H. VAN HORN
SURVEY NO. 18



Recommendation:

Staff has reviewed the request and determined the request complies with the San Marcos Development Code and recommends **approval** of PC-19-41 as submitted.