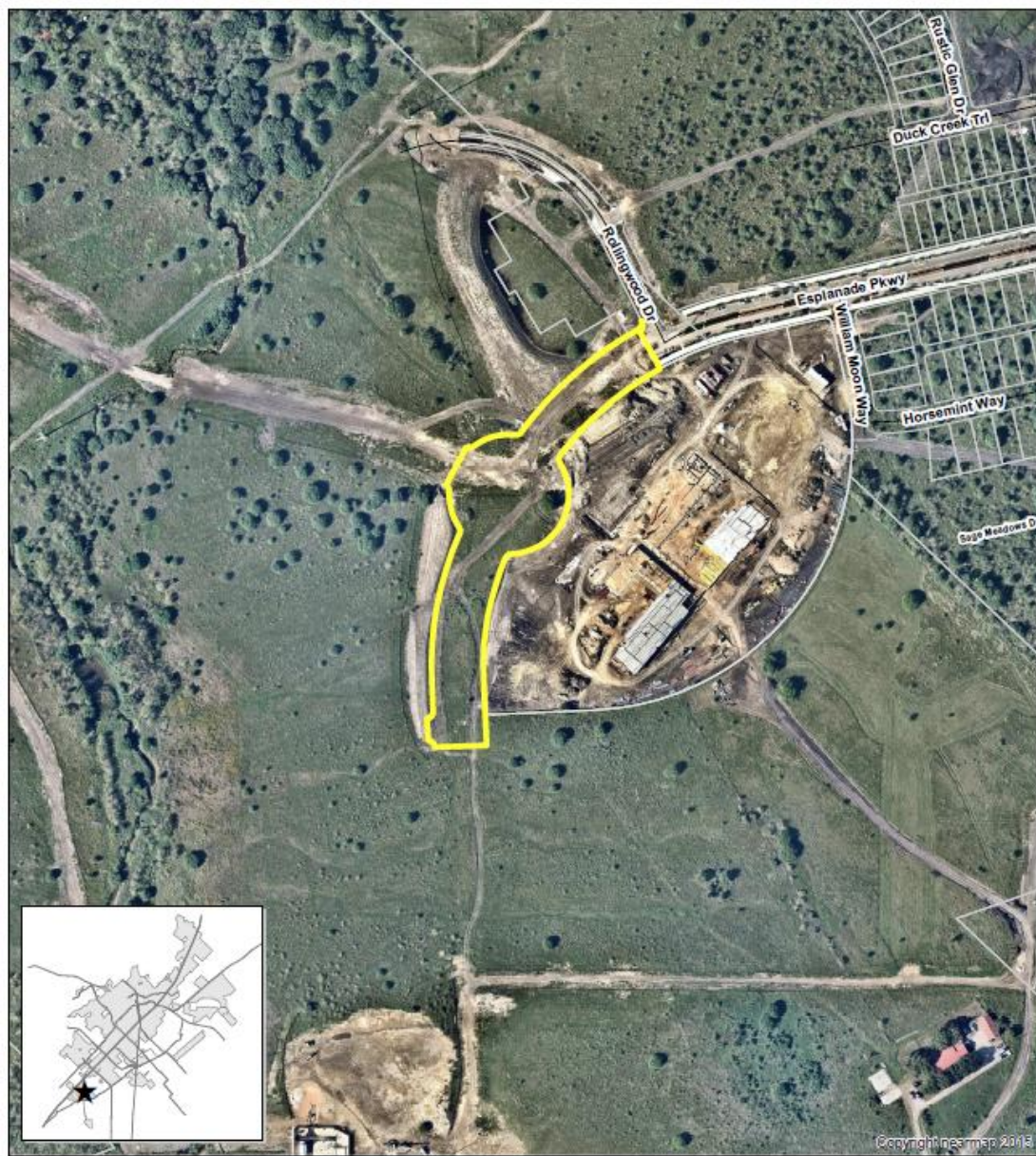


PC-18-34_03 (Trace PID Phase 2A, Esplanade Parkway)


Consider a request by Caren Williams-Murch, on behalf of Highpoint Trace LLC, for approval of a Final Plat for approximately 3.527 acres, more or less, out of the William Van Horn Survey No. 18, Abstract No. 464 located at the intersection of Esplanade Parkway and William Moon Way. (A. Villalobos)

Location:

- +/- 3.527 acres
- Zoned Planned Development District “PDD”, with a base zoning of Single-Family “SF-6”
- 1 residential roadways proposed: Esplanade Parkway
- Surety for Public Improvements has been fulfilled through the Trace PID
- License Agreements for landscape improvements in the Right-of-way.



PC-18-34_03
Trace, PID Phase 2A
Esplanade Parkway
Map Date: 5/29/2019

 PC_18_34_03

0 185 370 740 Feet
 N

This product is for informational purposes and may not have been prepared for or be suitable for legal, engineering, or surveying purposes. It does not represent an on-the-ground survey and represents only the approximate relative location of property boundaries.

Recommendation:

Staff has reviewed the request and determined the Final Plat meets all requirements of Section 3.2.3.4 and Section 3.4.2 of the Development Code as well as Ordinance 2015-042 and recommends **approval** of PC-18-34_03.