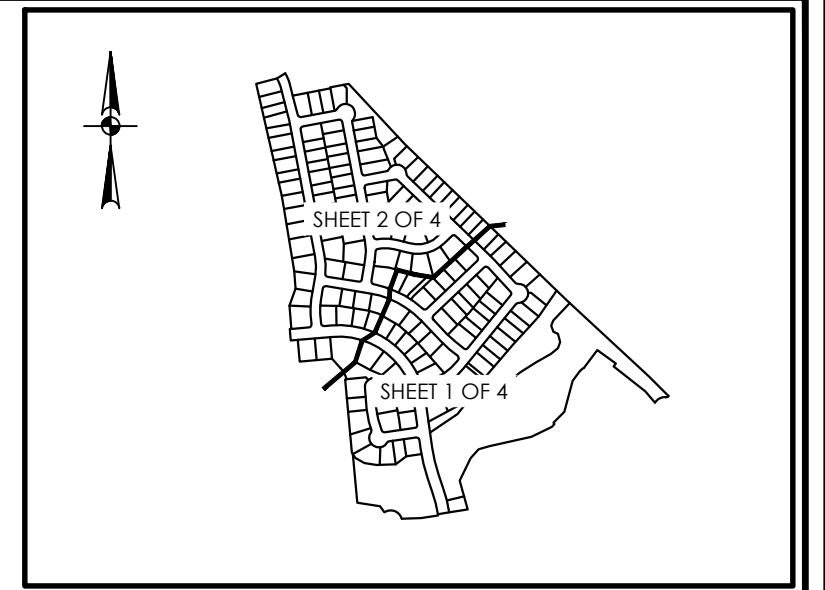
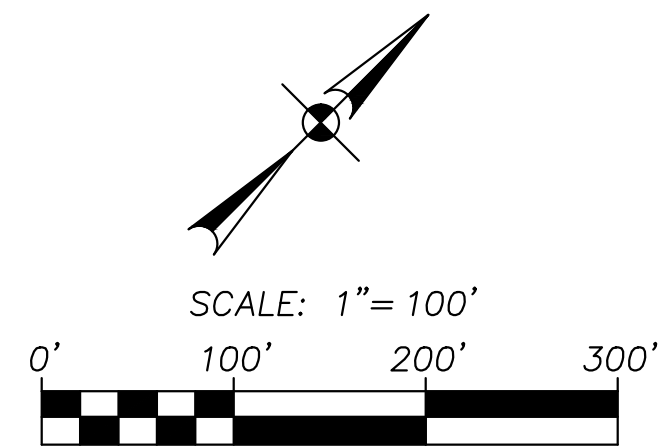


LOCATION MAP
NOT TO SCALE

FINAL PLAT OF PASO ROBLES, PHASE 3B

A 51.651 ACRE TRACT OF LAND, BEING OUT OF A REMNANT PORTION OF A 272.027 ACRE TRACT RECORDED IN VOLUME 3144, PAGE 658 OF THE OFFICIAL PUBLIC RECORDS OF HAYS COUNTY, TEXAS, AND BEING OUT OF A REMNANT PORTION OF A 301.926 ACRE TRACT RECORDED IN VOLUME 3390, PAGE 411 OF THE OFFICIAL PUBLIC RECORDS OF HAYS COUNTY, TEXAS, SITUATED IN THE JOHN WILLIAMS SURVEY NO. 1, ABSTRACT NO. 471 IN THE CITY OF SAN MARCOS, HAYS COUNTY, TEXAS.



INDEX MAP
NOT TO SCALE

LEGEND

- CFN CLERK'S FILE NUMBER
 - DOC DOCUMENT NUMBER
 - OPR OFFICIAL PUBLIC RECORDS OF HAYS COUNTY, TEXAS
 - PR PLAT RECORDS OF HAYS COUNTY, TEXAS
 - DR DEED RECORDS OF HAYS COUNTY, TEXAS
 - MFEE MINIMUM FINISHED FLOOR ELEVATION
 - FD, I.R. FOUND IRON ROD
 - ROW RIGHT OF WAY
 - VOL VOLUME
 - PG PAGE(S)
- (SURVEYOR) ● FOUND 1/2" IRON ROD PAPE-DAWSON (UNLESS NOTED OTHERWISE)
○ SET 1/2" IRON ROD (PD)
--- FLOODPLAIN

OWNER: CARMA PASO ROBLES, LLC
11501 ALTERRA PARKWAY, SUITE 100
AUSTIN, TX 78758
512-391-1330 P
512-391-1333 F

ACREAGE: 51.651 ACRES
PRIVATE STREET LOT: 9.780 ACRES

SURVEYOR: PAPE-DAWSON ENGINEERS, INC.
10801 N. MOPAC EXPY., BLDG. 3, SUITE 200
AUSTIN, TX 78759
(512) 454-8711 P

ENGINEER: PAPE-DAWSON ENGINEERS, INC.
10801 N. MOPAC EXPY., BLDG. 3, SUITE 200
AUSTIN, TX 78759
(512) 454-8711 P

NUMBER OF BLOCKS: 8

LINEAR FEET OF NEW STREETS:
DANCING OAK LANE 2173'
PLAYING CYPRESS DRIVE 1439'
CRUISING OAK STREET 1175'
DRAWING MAPLE STREET 1112'
GLIDING WILLOW STREET 897'
BALANCING LAUREL DRIVE 531'
PASSING ELM DRIVE 477'
RIDING PLUM DRIVE 444'

SUBMITTAL DATE: NOVEMBER 27, 2018

NUMBER OF LOTS BY TYPE:
PRIVATE STREET LOTS: 1
SINGLE FAMILY LOTS: 147
OPEN SPACE/DRAINAGE LOT: 1
PARKLAND LOT: 1
OPEN SPACE LOTS: 4
OPEN SPACE/DRAINAGE/WATER QUALITY/BMP: 1

BENCHMARK DESCRIPTION AND ELEVATION:
BENCHMARK 103
SET MAG NAIL IN CONCRETE PAD
NAD 83 GRID COORDINATES
N: 13854272.0
E: 2288201.8
ELEVATION 712.49' (NAVD 1988) GEOID 12A

BENCHMARK 101
CHISELED SQUARE ON CONCRETE DRAINAGE
STRUCTURE
NAD 83 GRID COORDINATES
N: 13854108.7
E: 2289351.8
ELEVATION: 692.49' (NAVD 1988) GEOID 12A

JOHN WILLIAMS
SURVEY NO. 1
ABSTRACT NO. 471

REMNANT PORTION
OF A
272.027 ACRE TRACT
CARMA PASO ROBLES LLC
(3144/658 O.P.R.)

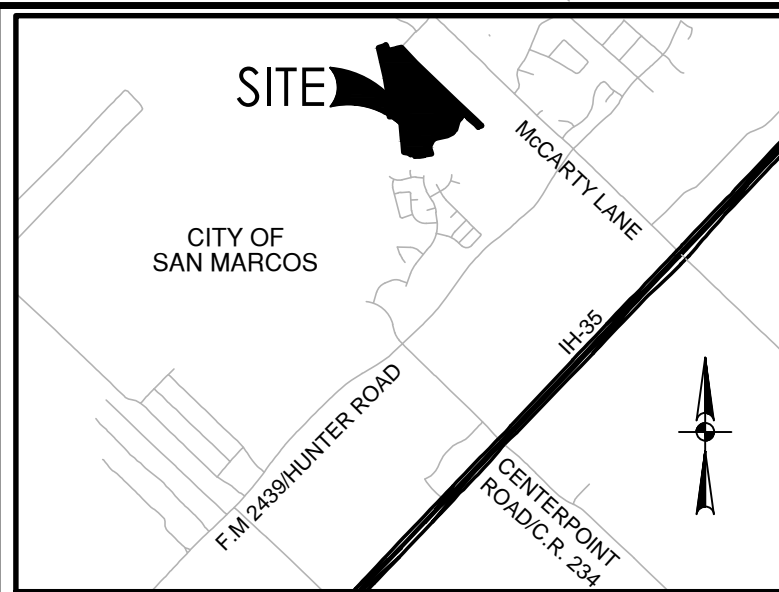
301.926 ACRES
SAVE AND EXCEPT
5.036 ACRES
CARMA PASO
ROBLES LLC
(3390/411 O.P.R.)

**PAPE-DAWSON
ENGINEERS**

AUSTIN | SAN ANTONIO | HOUSTON | FORT WORTH | DALLAS
10801 N. MOPAC EXPY., BLDG. 3, SUITE 200 | AUSTIN, TX 78759 | 512.454.8711
TBPE FIRM REGISTRATION #470 | TBPLS FIRM REGISTRATION #10028801

LOT SUMMARY			
LOT	USAGE TYPE	NO. OF LOTS	AREA (AC.)
LOTS 31-46 & 48-49 BLOCK I	SINGLE FAMILY	147	27.625 ACRES
LOTS 39, 41-73 & 75-78 BLOCK F			
LOTS 1-12, BLOCK M; LOTS 1-11, BLOCK N; LOTS 1-25, BLOCK Q			
LOTS 1-5 & LOTS 7-14, BLOCK O; LOTS 1-18, BLOCK R; LOTS 1-12, BLOCK P			
LOT 6, BLOCK O	OPEN SPACE/DRAINAGE	1	0.089 ACRES
LOT 40, BLOCK F	OPEN SPACE/DRAINAGE WATER QUALITY/BMP	1	2.139 ACRES
LOT 38, BLOCK F	PARKLAND	1	7.494 ACRES
LOTS 30 & 47 BLOCK I; LOT 12, BLOCK N; LOT 74 BLOCK F;	OPEN SPACE	4	4.524 ACRES
LOT 48, BLOCK I	PRIVATE STREETS	1	9.780 ACRES
TOTAL:		155	51.651 ACRES

SHEET 1 OF 4



LOCATION MAP
NOT-TO-SCALE

LEGEND

- CFN CLERK'S FILE NUMBER
DOC DOCUMENT NUMBER
OPR OFFICIAL PUBLIC RECORDS OF
HAYS COUNTY, TEXAS
PR PLAT RECORDS OF HAYS
COUNTY, TEXAS
DR DEED RECORDS OF HAYS
COUNTY, TEXAS
MFFE MINIMUM FINISHED FLOOR ELEVATION
FD, I.R. FOUND IRON ROD
ROW RIGHT OF WAY
VOL VOLUME
PG PAGE(S)
(SURVEYOR) ● FOUND 1/2" IRON ROD PAPE-DAWSON
(UNLESS NOTED OTHERWISE)
○ SET 1/2" IRON ROD (PD)
--- FLOODPLAIN

BLOCK F			
LOT #	AREA (SQ. FT.)	AREA ACREAGE	USAGE TYPE
38	326,427	7.494 AC.	PARKLAND
39	6,040	0.139 AC.	SINGLE FAMILY
40	93,170	2.139 AC.	OPEN SPACE/DRAINAGE/ WATER QUALITY/ BMP
41	13,815	0.317 AC.	SINGLE FAMILY
42	15,112	0.347 AC.	SINGLE FAMILY
43	11,207	0.257 AC.	SINGLE FAMILY
44	8,161	0.187 AC.	SINGLE FAMILY
45	5,898	0.135 AC.	SINGLE FAMILY
46	7,152	0.164 AC.	SINGLE FAMILY
47	7,237	0.166 AC.	SINGLE FAMILY
48	7,436	0.171 AC.	SINGLE FAMILY
49	6,395	0.147 AC.	SINGLE FAMILY
50	9,008	0.207 AC.	SINGLE FAMILY
51	7,605	0.175 AC.	SINGLE FAMILY
52	13,118	0.301 AC.	SINGLE FAMILY
53	10,578	0.243 AC.	SINGLE FAMILY
54	9,285	0.213 AC.	SINGLE FAMILY
55	7,824	0.180 AC.	SINGLE FAMILY
56	5,772	0.133 AC.	SINGLE FAMILY
57	6,625	0.152 AC.	SINGLE FAMILY
58	5,533	0.127 AC.	SINGLE FAMILY
59	6,654	0.153 AC.	SINGLE FAMILY
60	5,555	0.128 AC.	SINGLE FAMILY
61	6,669	0.153 AC.	SINGLE FAMILY
62	5,560	0.128 AC.	SINGLE FAMILY
63	6,675	0.153 AC.	SINGLE FAMILY
64	5,565	0.128 AC.	SINGLE FAMILY
65	7,795	0.179 AC.	SINGLE FAMILY
66	7,750	0.178 AC.	SINGLE FAMILY
67	7,788	0.179 AC.	SINGLE FAMILY
68	14,899	0.342 AC.	SINGLE FAMILY
69	8,898	0.204 AC.	SINGLE FAMILY
70	9,896	0.227 AC.	SINGLE FAMILY
71	6,161	0.141 AC.	SINGLE FAMILY
72	6,600	0.152 AC.	SINGLE FAMILY
73	5,497	0.126 AC.	SINGLE FAMILY
74	19,341	0.444 AC.	OPEN SPACE
75	8,270	0.190 AC.	SINGLE FAMILY
76	7,319	0.168 AC.	SINGLE FAMILY
77	7,080	0.163 AC.	SINGLE FAMILY
78	8,827	0.203 AC.	SINGLE FAMILY



AUSTIN | SAN ANTONIO | HOUSTON | FORT WORTH | DALLAS
10801 N. MOPAC EXPY, BLDG. 3, SUITE 200 | AUSTIN, TX 78759 | 512.454.8711
TBPE FIRM REGISTRATION #470 | TBPLS FIRM REGISTRATION #10028801

FINAL PLAT OF PASO ROBLES, PHASE 3B

A 51.651 ACRE TRACT OF LAND, BEING OUT OF A REMNANT PORTION OF A 272.027 ACRE TRACT RECORDED IN VOLUME 3144, PAGE 658 OF THE OFFICIAL PUBLIC RECORDS OF HAYS COUNTY, TEXAS, AND BEING OUT OF A REMNANT PORTION OF A 301.926 ACRE TRACT RECORDED IN VOLUME 3390, PAGE 411 OF THE OFFICIAL PUBLIC RECORDS OF HAYS COUNTY, TEXAS, SITUATED IN THE JOHN WILLIAMS SURVEY NO. 1, ABSTRACT NO. 471 IN THE CITY OF SAN MARCOS, HAYS COUNTY, TEXAS.

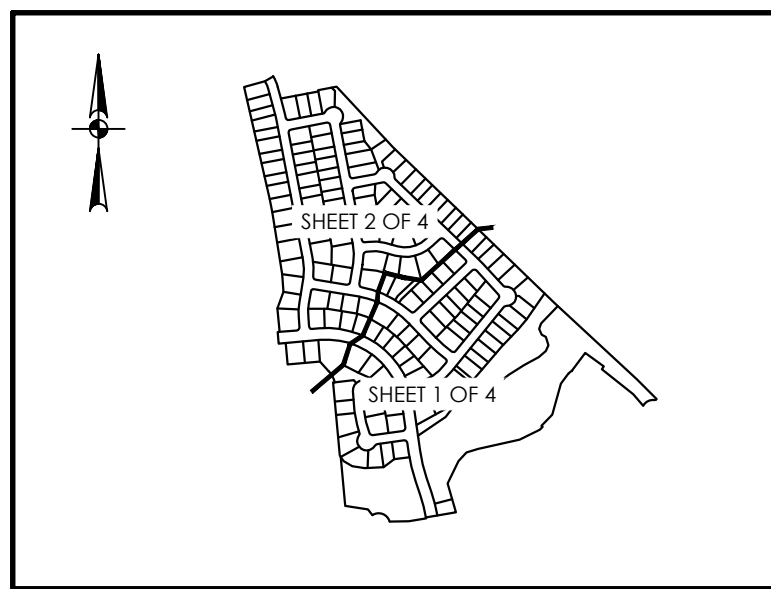
BLOCK M			
LOT #	AREA (SQ. FT.)	AREA ACREAGE	USAGE TYPE
1	9,415	0.216 AC.	SINGLE FAMILY
2	6,600	0.152 AC.	SINGLE FAMILY
3	5,500	0.126 AC.	SINGLE FAMILY
4	6,640	0.152 AC.	SINGLE FAMILY
5	5,746	0.132 AC.	SINGLE FAMILY
6	9,982	0.229 AC.	SINGLE FAMILY
7	8,917	0.205 AC.	SINGLE FAMILY
8	8,394	0.193 AC.	SINGLE FAMILY
9	5,834	0.134 AC.	SINGLE FAMILY
10	6,594	0.151 AC.	SINGLE FAMILY
11	7,109	0.163 AC.	SINGLE FAMILY
12	6,475	0.149 AC.	SINGLE FAMILY

BLOCK N			
LOT #	AREA (SQ. FT.)	AREA ACREAGE	USAGE TYPE
1	17,636	0.405 AC.	SINGLE FAMILY
2	8,186	0.188 AC.	SINGLE FAMILY
3	9,328	0.214 AC.	SINGLE FAMILY
4	7,787	0.179 AC.	SINGLE FAMILY
5	9,328	0.214 AC.	SINGLE FAMILY
6	7,787	0.179 AC.	SINGLE FAMILY
7	9,328	0.214 AC.	SINGLE FAMILY
8	7,787	0.179 AC.	SINGLE FAMILY
9	9,328	0.214 AC.	SINGLE FAMILY
10	8,051	0.185 AC.	SINGLE FAMILY
11	13,317	0.306 AC.	SINGLE FAMILY
12	39,519	0.907 AC.	OPEN SPACE

BLOCK I			
LOT #	AREA (SQ. FT.)	AREA ACREAGE	USAGE TYPE
30	104,081	2.389 AC.	OPEN SPACE
31	7,155	0.164 AC.	SINGLE FAMILY
32	6,415	0.147 AC.	SINGLE FAMILY
33	8,050	0.185 AC.	SINGLE FAMILY
34	10,418	0.239 AC.	SINGLE FAMILY
35	10,063	0.231 AC.	SINGLE FAMILY
36	12,682	0.291 AC.	SINGLE FAMILY
37	7,701	0.177 AC.	SINGLE FAMILY
38	11,481	0.264 AC.	SINGLE FAMILY
39	9,426	0.216 AC.	SINGLE FAMILY
40	10,493	0.241 AC.	SINGLE FAMILY
41	7,982	0.183 AC.	SINGLE FAMILY
42	7,827	0.180 AC.	SINGLE FAMILY
43	8,230	0.189 AC.	SINGLE FAMILY
44	7,308	0.168 AC.	SINGLE FAMILY
45	8,230	0.189 AC.	SINGLE FAMILY
46	13,055	0.300 AC.	SINGLE FAMILY
47	34,134	0.784 AC.	OPEN SPACE
48	9,021	0.207 AC.	SINGLE FAMILY
49	10,148	0.233 AC.	SINGLE FAMILY

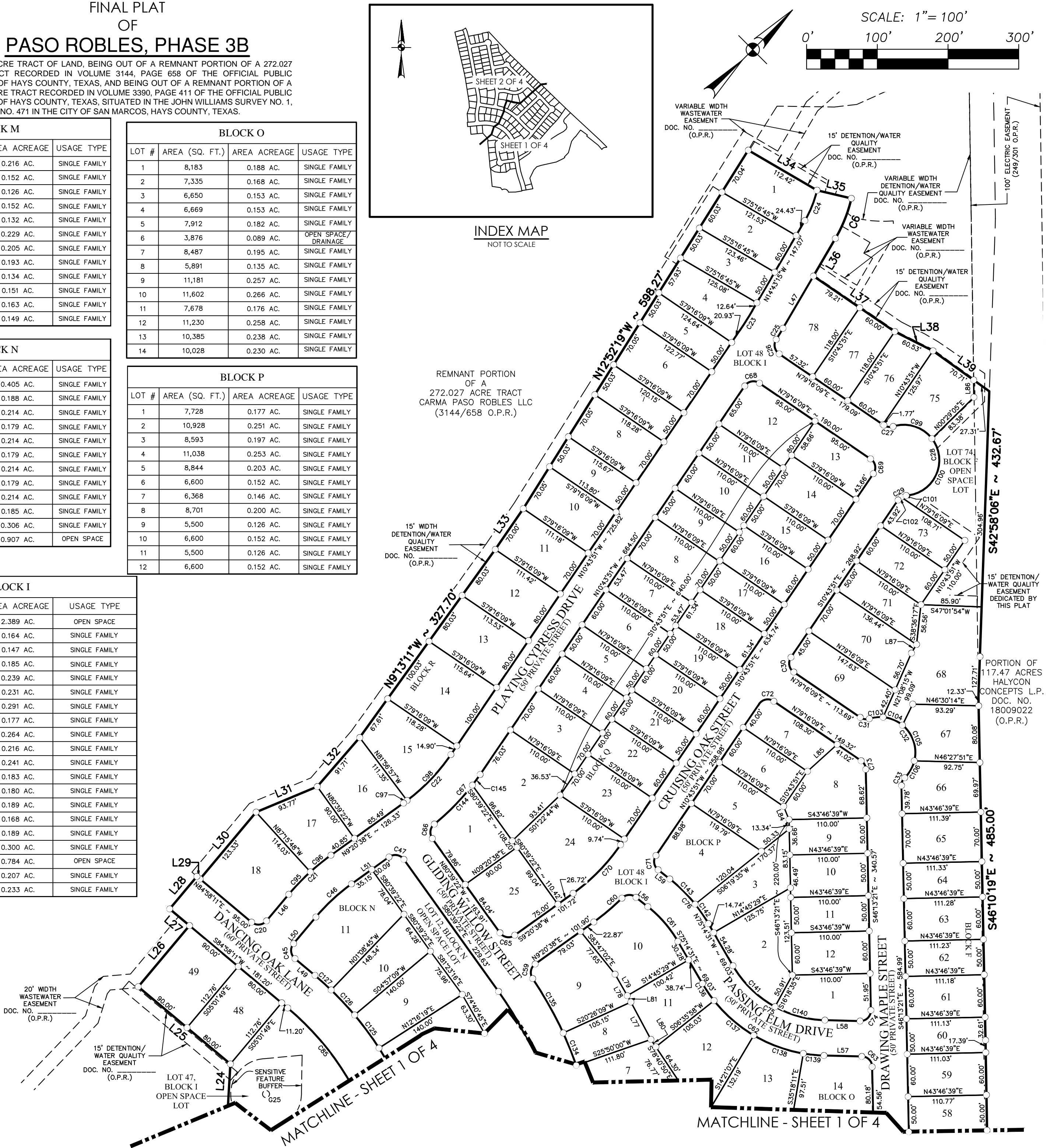
BLOCK O			
LOT #	AREA (SQ. FT.)	AREA ACREAGE	USAGE TYPE
1	8,183	0.188 AC.	SINGLE FAMILY
2	7,335	0.168 AC.	SINGLE FAMILY
3	6,650	0.153 AC.	SINGLE FAMILY
4	6,669	0.153 AC.	SINGLE FAMILY
5	7,912	0.182 AC.	SINGLE FAMILY
6	3,876	0.089 AC.	OPEN SPACE/ DRAINAGE
7	8,487	0.195 AC.	SINGLE FAMILY
8	5,891	0.135 AC.	SINGLE FAMILY
9	11,181	0.257 AC.	SINGLE FAMILY
10	11,602	0.266 AC.	SINGLE FAMILY
11	7,678	0.176 AC.	SINGLE FAMILY
12	11,230	0.258 AC.	SINGLE FAMILY
13	10,385	0.238 AC.	SINGLE FAMILY
14	10,028	0.230 AC.	SINGLE FAMILY

BLOCK P			
LOT #	AREA (SQ. FT.)	AREA ACREAGE	USAGE TYPE
1	7,728	0.177 AC.	SINGLE FAMILY
2	10,928	0.251 AC.	SINGLE FAMILY
3	8,593	0.197 AC.	SINGLE FAMILY
4	11,038	0.253 AC.	SINGLE FAMILY
5	8,844	0.203 AC.	SINGLE FAMILY
6	6,600	0.152 AC.	SINGLE FAMILY
7	6,368	0.146 AC.	SINGLE FAMILY
8	8,701	0.200 AC.	SINGLE FAMILY
9	5,500	0.126 AC.	SINGLE FAMILY
10	6,600	0.152 AC.	SINGLE FAMILY
11	5,500	0.126 AC.	SINGLE FAMILY
12	6,600	0.152 AC.	SINGLE FAMILY



INDEX MAP
NOT TO SCALE

REMNAANT PORTION
OF A
272.027 ACRE TRACT
CARMA PASO ROBLES, LLC
(3144/658 O.P.R.)



FINAL PLAT
OF
PASO ROBLES, PHASE 3B

A 51.651 ACRE TRACT OF LAND, BEING OUT OF A REMNANT PORTION OF A 272.027 ACRE TRACT RECORDED IN VOLUME 3144, PAGE 658 OF THE OFFICIAL PUBLIC RECORDS OF HAYS COUNTY, TEXAS, AND BEING OUT OF A REMNANT PORTION OF A 301.926 ACRE TRACT RECORDED IN VOLUME 3390, PAGE 411 OF THE OFFICIAL PUBLIC RECORDS OF HAYS COUNTY, TEXAS, SITUATED IN THE JOHN WILLIAMS SURVEY NO. 1, ABSTRACT NO. 471 IN THE CITY OF SAN MARCOS, HAYS COUNTY, TEXAS.

SURVEYOR'S NOTES:

- PROPERTY CORNERS ARE MONUMENTED WITH A CAP OR DISK MARKED "PAPE-DAWSON" UNLESS NOTED OTHERWISE.
- COORDINATES SHOWN ARE BASED ON THE NORTH AMERICAN DATUM OF 1983 NAD83 (NA2011) EPOCH2010.00 FROM THE TEXAS COORDINATE SYSTEM ESTABLISHED FOR THE SOUTH CENTRAL ZONE DISPLAYED IN GRID VALUES DERIVED FROM THE NGS COOPERATIVE CORS NETWORK.
- DIMENSIONS SHOWN ARE SURFACE WITH A COMBINED SCALE FACTOR OF 1.00013.
- BEARINGS ARE BASED ON THE NORTH AMERICAN DATUM OF 1983 NAD83 (NA2011) EPOCH2010.00, FROM THE TEXAS COORDINATE SYSTEM ESTABLISHED FOR THE SOUTH CENTRAL ZONE.
- THE EASEMENTS CREATED BY SEPARATE INSTRUMENT AND THEIR LOCATIONS ARE GOVERNED BY THE TERMS, PROVISIONS AND CONDITIONS OF SUCH SEPARATE INSTRUMENTS.

CURVE TABLE

CURVE #	RADIUS	DELTA	CHORD BEARING	CHORD	LENGTH
C1	12.50'	52°37'00"	S71°12'49"W	11.08'	11.48'
C2	57.50'	67°18'22"	S63°52'08"W	63.73'	67.55'
C3	50.00'	28°56'55"	S51°16'13"W	24.99'	25.26'
C4	60.00'	107°09'20"	N69°17'01"W	96.56'	112.21'
C5	125.00'	30°17'44"	N28°19'45"W	65.33'	66.09'
C6	205.00'	17°05'53"	S23°16'11"E	60.95'	61.18'
C7	720.00'	9°16'11"	N14°05'14"W	116.36'	116.49'
C8	830.00'	10°46'28"	N13°20'05"W	155.85'	156.08'
C9	15.00'	90°00'00"	N52°56'51"W	21.21'	23.56'
C10	15.00'	52°01'12"	S56°02'32"W	13.16'	13.62'
C11	50.00'	185°12'52"	N57°21'38"W	99.90'	161.63'
C12	15.00'	52°01'12"	N9°14'12"E	13.16'	13.62'
C13	325.00'	12°15'35"	N10°38'37"W	69.41'	69.54'
C14	52.00'	26°01'52"	S54°23'07"E	79.52'	236.20'
C15	13.00'	80°15'25"	S35°36'53"W	16.76'	18.21'
C16	275.00'	12°15'35"	S10°38'37"E	58.73'	58.84'
C17	15.00'	8°10'27"	S57°21'38"E	19.52'	21.25'
C18	15.00'	90°00'00"	N37°03'09"E	21.21'	23.56'
C19	395.00'	87°04'57"	N51°29'20"W	544.21'	600.35'
C20	15.00'	90°00'00"	N39°58'11"E	21.21'	23.56'
C21	325.00'	14°22'27"	N2°09'25"E	81.32'	81.54'
C22	275.00'	20°04'29"	N0°41'36"W	95.86'	96.35'
C23	475.00'	3°59'24"	N12°43'33"W	33.07'	33.08'
C24	155.00'	17°05'53"	S23°16'11"W	46.08'	46.25'
C25	525.00'	2°00'28"	S13°43'01"E	18.40'	18.40'
C26	15.00'	88°01'04"	S56°43'19"E	20.84'	23.04'
C27	15.00'	52°01'12"	N53°15'33"E	13.16'	13.62'
C28	50.00'	194°02'25"	S55°43'51"E	99.25'	169.33'
C29	15.00'	52°01'12"	S15°16'46"W	13.16'	13.62'
C30	15.00'	90°00'00"	S55°43'51"E	21.21'	23.56'
C31	15.00'	51°36'09"	N53°28'05"E	13.06'	13.51'
C32	50.00'	152°52'10"	S75°53'55"E	97.21'	133.40'
C33	15.00'	46°45'32"	S22°50'35"E	11.90'	12.24'
C34	775.00'	3°37'21"	S44°24'41"E	48.99'	49.00'
C35	15.00'	52°01'12"	S68°36'37"E	13.16'	13.62'
C36	50.00'	185°47'33"	S1°43'27"E	99.87'	162.13'
C37	15.00'	52°01'12"	S65°09'44"W	13.16'	13.62'
C38	325.00'	33°51'23"	S56°04'49"W	189.26'	192.04'
C39	15.00'	85°07'04"	S30°26'58"W	20.29'	22.28'
C40	455.00'	4°09'43"	S10°01'43"E	33.04'	33.05'
C41	770.00'	10°46'28"	S13°20'05"E	144.58'	144.80'
C42	780.00'	9°16'11"	S14°05'14"E	126.05'	126.19'
C43	15.00'	85°07'04"	N64°25'58"W	20.29'	22.28'
C44	455.00'	73°09'23"	N58°27'07"W	542.29'	580.95'
C45	15.00'	90°00'00"	N50°01'49"W	21.21'	23.56'
C46	275.00'	14°22'27"	N2°09'25"E	68.81'	68.99'
C47	15.00'	90°00'00"	N54°20'38"E	21.21'	23.56'
C48	475.00'	37°07'12"	S62°05'45"E	302.38'	307.74'
C49	525.00'	7°18'44"	S47°11'31"E	66.96'	67.00'

CURVE TABLE

CURVE #	RADIUS	DELTA	CHORD BEARING	CHORD	LENGTH
C50	15.00'	90°00'00"	S5°50'53"E	21.21'	23.56'
C51	275.00'	33°51'23"	S56°04'48"W	160.15'	162.50'
C52	15.00'	90°00'00"	S84°09'07"W	21.21'	23.56'
C53	475.00'	7°18'44"	N47°11'31"W	60.58'	60.62'
C54	15.00'	90°00'00"	N1°27'51"E	21.21'	23.56'
C55	15.00'	90°56'08"	S88°04'05"E	21.39'	23.81'
C56	15.00'	81°45'08"	S1°43'27"E	19.63'	21.40'
C57	15.00'	85°54'36"	S89°25'09"W	20.44'	22.49'
C58	525.00'	31°34'15"	N63°24'41"W	285.64'	289.28'
C59	15.00'	88°32'27"	N34°55'35"W	20.94'	23.18'
C60	325.00'	9°11'48"	N44°44'45"E	52.11'	52.17'
C61	175.00'	21°22'01"	S85°55'31"E	64.88'	65.26'
C62	205.00'	58°17'38"	N75°36'40"E	199.69'	208.57'
C63	15.00'	87°18'48"	S89°52'45"E	20.71'	22.86'
C64	15.00'	92°41'12"	S0°07'15"W	21.70'	24.27'
C65	15.00'	90°00'00"	S54°20'38"W	21.21'	23.56'
C66	15.00'	86°48'43"	N37°15'00"W	20.61'	22.73'
C67	325.00'	16°53'13"	N21°7'14"W	95.44'	95.79'
C68	15.00'	90°00'00"	N34°16'09"E	21.21'	23.56'
C69	15.00'	90°00'00"	S55°43'51"E	21.21'	23.56'
C70	275.00'	20°04'29"	S0°41'36"E	95.86'	96.35'
C71	15.00'	85°52'41"	N53°40'11"W	20.44'	22.48'
C72	15.00'	90°00'00"	N34°16'09"E	21.21'	23.56'
C73	15.00'	54°30'29"	S73°28'36"E	13.74'	14.27'
C74	15.00'	92°41'12"	S0°07'15"W	21.70'	24.27'
C75	155.00'	58°17'38"	S75°36'40"W	150.99'	157.70'
C76	225.00'	21°22'01"	N85°55'31"W	83.42'	83.91'
C77	830.00'	8°58'05"	N14°14'16"W	129.78'	129.91'
C78	830.00'	1°48'23"	N85°1°03"W	26.16'	26.17'
C79	50.00'	51°39'24"	S55°51'38"W	43.57'	45.08'
C80	50.00'	60°23'13"	N68°07'03"W	50.29'	52.70'
C81	50.00'	73°10'15"	N1°20'19"W	59.60'	63.85'
C82	325.00'	10°58'32"	N11°17'08"W	62.16'	62.26'
C83	325.00'	11°17'03"	N5°09'21"W	7.28'	7.28'
C84	52.00'	53°11'29"	N22°04'55"E	46.56'	48.28'
C85	395.00'	22°56'59"	N83°33'19"W	157.16'	158.22'
C86	52.00'	175°44'49"	S43°26'56"E	103.93'	159.50'
C87	395.00'	18°20'45"	N62°54'27"W	125.94'	126.48'
C88	395.00'	12°33'31"	N47°27'20"W	86.41'	86.58'
C89	395.00'	12°33'31"	N34°53'49"W	86.41'	86.58'
C90	395.00'	14°21'41"	N21°26'13"W	98.75'	99.01'
C91	395.00'	6°18'30"	N11°06'07"W	43.47'	43.49'
C92	275.00'	5°20'49"	S14°06'00"E	25.65'	25.66'
C93	275.00'	6°54'46"	S7°58'13"E	33.16'	33.18'
C94	52.00'	31°19'07"	S60°05'02"W	28.07'	28.42'
C95	325.00'	7°46'00"	N1°08'49"W	44.02'	44.06'
C96	325.00'	6°36'27"	N6°02'25"E	37.46'	37.48'
C97	275.00'	11°17'36"	N8°41'51"E	6.21'	6.21'
C98	275.00'	18°46'53"	N1°20'24"W	89.74'	90.14'

CURVE TABLE

CURVE #	RADIUS	DELTA	CHORD BEARING	CHORD	LENGTH
C99	50.00'	70°05'53"	N62°17'53"E	57.43'	61.17'
C100	50.00'	123°56'32"	S20°40'54"E	88.27'	108.16'
C101	15.00'	28°06'38"	S27°14'03"W	7.29'	7.36'
C102	15.00'	23°54'34"	S11°3'26"W	6.21'	6.26'
C103	50.00'	22°28'05"	N38°54'03"E	19.48'	19.61'
C104	50.00'	34°22'39"	N67°19'25"E	29.55'	30.00'
C105	50.00'	64°06'47"	S63°25'52"E	53.08'	55.95'
C106	50.00'	31°54'39"	S15°25'09"E	27.49'	27.85'
C107	775.00'	1°01'41"	S45°42'31"E	13.91'	13.91'
C108	775.00'	2°35'40"	S43°53'50"E	35.09'	35.09'
C109	50.00'	52°51'54"	S68°11'16"E	44.51'	46.13'
C110	50.00'	38°48'43"	S22°20'58"E	33.23'	33.87'
C111	50.00'	74°05'32"	S34°06'10"W	60.25'	64.66'
C112	50.00'	20°01'24"	S81°09'38"W	17.38'	17.47'
C113	325.00'	12°25'32"	S45°21'53"W	70.34'	70.48'
C114	325.00'	16°51'26"	S60°00'22"W	95.28'	95.62'
C115	325.00'	4°34'25"	S70°43'18"W	25.94'	25.94'
C116	455.00'	9°30'13"	S26°37'32"E	75.39'	75.47'
C117	275.00'	28°35'07"	N58°42'57"E	135.78'	137.20'
C118	455.00'	6°05'53"	S34°25'36"E	48.40'	48.43'
C119	455.00'	7°19'10"	S41°08'07"E	58.09'	58.12'
C120	455.00'	6°05'53"	S47°50'39"E	48.40'	48.43'
C121	455.00'	7°19'10"	S54°33'10"E	58.09'	58.12'
C122	455.00'	6°05'53"	S61°15'42"E	48.40'	48.43'
C123	455.00'	7°19'10"	S67°58'13"E	58.09'	58.12'
C124	455.00'	6°05'53"	S74°40'45"E	48.40'	48.43'
C125	455.00'	7°19'10"	S81°23'16"E	58.09'	58.12'
C126	455.00'	6°05'53"	S88°05'48"E	48.40'	48.43'
C127	455.00'	3°53'04"	N86°54'43"E	30.84'	30.85'
C128	275.00'	5°16'17"	N41°47'15"E	25.29'	25.30'
C129	475.00'	6°34'00"	N47°33'53"W	54.41'	54.44'
C130	475.00'	0°44'44"	N43°54'31"W	6.18'	6.18'
C131	525.00'	8°25'55"	S51°50'31"E	77.19'	77.26'
C132	525.00'	2°43'46"	S57°25'22"E	25.01'	25.01'
C133	525.00'	5°22'46"	S61°28'37"E	49.27'	49.29'
C134	525.00'	5°23'51"	S66°51'56"E	49.44'	49.46'
C135	525.00'	9°37'57"	S74°22'49"E	88.16'	88.26'
C136	205.00'	8°09'31"	N79°19'16"W	29.17'	29.19'
C137	205.00'	20°57'05"	S86°07'26"W	74.55'	74.96'
C138	205.00'	20°57'05"	S65°10'21"W	74.55'	74.96'
C139	205.00'	8°13'58"	S50°34'50"W	29.43'	29.46'
C140	155.00'	27°13'34"	S60°04'38"W	72.96'	73.65'
C141	155.00'	31°04'04"	S89°13'27"W	83.02'	84.05'
C142	225.00'	8°25'54"	N79°27'28"W	33.08'	33.11'
C143	225.00'	12°56'07"	S89°51'32"W	50.69'	50.80'
C144	325.00'	13°36'25"	S0°38'51"E	77.00'	77.18'
C145	325.00'	3°16'47"	S9°05'27"E	18.60'	18.60'
C146	780.00'	4°23'55"	S11°39'06"E	59.87'	59.88'

BLOCK	LOT	SIDE CORNER FRONTAGE
M	1	DRAWING MAPLE STREET
M	6	GLIDING WILLOW STREET
M	7	GLIDING WILLOW STREET
M	12	DRAWING MAPLE STREET
N	1	DRAWING MAPLE STREET
N	11	PLAYING CYPRESS DRIVE
I	40	BALANCING LAUREL DRIVE
I	41	BALANCING LAUREL DRIVE
O	1	DRAWING MAPLE STREET
O	5	GLIDING WILLOW STREET
O	9	CRUISING OAK STREET
O	10	CRUISING OAK STREET
O	14	DRAWING MAPLE STREET
Q	1	GLIDING WILLOW STREET
Q	12	CRUISING OAK STREET
Q	13	CRUISING OAK STREET
Q	25	GLIDING WILLOW STREET

BLOCK R

LOT #	AREA (SQ. FT.)	AREA ACREAGE	USAGE TYPE
1	8,325	0.191 AC.	SINGLE FAMILY
2	7,350	0.169 AC.	SINGLE FAMILY
3	6,214	0.143 AC.	SINGLE FAMILY
4	7,806	0.179 AC.	SINGLE FAMILY
5	6,185	0.142 AC.	SINGLE FAMILY
6	8,502	0.195 AC.	SINGLE FAMILY
7	5,961	0.137 AC.	SINGLE FAMILY
8	8,188	0.188 AC.	SINGLE FAMILY
9	5,737	0.132 AC.	SINGLE FAMILY
10	7,874	0.181 AC.	SINGLE FAMILY
11	7,791	0.179 AC.	SINGLE FAMILY
12	8,998	0.207 AC.	SINGLE FAMILY
13	9,167	0.210 AC.	SINGLE FAMILY
14	11,696	0.269 AC.	SINGLE FAMILY
15	10,041	0.231 AC.	SINGLE FAMILY
16	9,120	0.209 AC.	SINGLE FAMILY
17	8,499	0.195 AC.	SINGLE FAMILY
18	12,737	0.292 AC.	SINGLE FAMILY

FINAL PLAT
OF
PASO ROBLES, PHASE 3B

A 51.651 ACRE TRACT OF LAND, BEING OUT OF A REMNANT PORTION OF A 272.027 ACRE TRACT RECORDED IN VOLUME 3144, PAGE 658 OF THE OFFICIAL PUBLIC RECORDS OF HAYS COUNTY, TEXAS, AND BEING OUT OF A REMNANT PORTION OF A 301.926 ACRE TRACT RECORDED IN VOLUME 3390, PAGE 411 OF THE OFFICIAL PUBLIC RECORDS OF HAYS COUNTY, TEXAS, SITUATED IN THE JOHN WILLIAMS SURVEY NO. 1, ABSTRACT NO. 471 IN THE CITY OF SAN MARCOS, HAYS COUNTY, TEXAS.

STATE OF TEXAS §
COUNTY OF TRAVIS §

That Carma Paso Robles, LLC, as the owner of a called 272.027 acre tract, recorded in Volume 3144, Page 658 of the Official Public Records of Hays County, Texas, situated in the John Williams Survey No. 1, Abstract 471, in the City of San Marcos, Hays County, Texas, do hereby subdivide said 272.027 acre tract of land, pursuant to public notification and hearing provisions of Chapter 212 of the Texas local Government Code, in accordance with this plat, to be known as **PASO ROBLES, PHASE 3B**, and do hereby dedicate to the public the use of the easements shown hereon subject to any easements, covenants or restrictions heretofore granted and not released.

Chad Matheson, C.F.O.
Carma Paso Robles, LLC

THE STATE OF TEXAS §
COUNTY OF TRAVIS §

Before me, the undersigned authority on this day personally appeared _____, known to me to be the person whose name is subscribed to the foregoing instrument, and he/she acknowledged to me that he/she executed the same for the purpose and considerations therein expressed and in the capacity therein stated. Given under my hand and seal of office this day of _____, A.D. 20____.

Notary Public, State of Texas

Printed Notary's Name
My Commission Expires: _____

THE STATE OF TEXAS §
COUNTY OF TRAVIS §

I, Parker J. Graham, am authorized under the laws of the State of Texas to practice the profession of surveying, and hereby certify that this plat is true and correct and was prepared from an actual survey of the property made under my supervision and that the monuments were properly placed under my supervision.

Parker J. Graham
Registered Professional Land Surveyor No. 5556
State of Texas
Pape-Dawson Engineers, Inc.
TBPE, Firm Registration No. 470
TBPLS, Firm Registration No. 10028801
10801 N MoPac Expy. Bldg. 3, Suite 200
Austin, Texas, 78759

Date

THE STATE OF TEXAS §
COUNTY OF TRAVIS §

That I, Steven S. Crauford, do hereby certify that proper engineering has been given this plat to the matters of streets, lots and drainage layout. To the best of my knowledge this plat conforms to all requirements of the development code.

Steven S. Crauford
Registered Professional Engineer No. 92677
State of Texas
Pape-Dawson Engineers, Inc.
TBPE, Firm Registration No. 470
TBPLS, Firm Registration No. 10028801
10801 N MoPac Expy. Bldg. 3, Suite 200
Austin, Texas, 78759

Date

CITY OF SAN MARCOS
CERTIFICATE OF APPROVAL

Approved and authorized to be recorded on the ____ day of _____, 20____ by the Planning and Zoning Commission of the City of San Marcos, Texas.

Chairman, Planning and Zoning Commission

Date

Shannon Mattingly
Director of Development Services

Date

Recording Secretary

Date

CIP and Engineering

Date

THE STATE OF TEXAS §
COUNTY OF HAYS §

I, Liz Gonzalez, County Clerk of Hays County, Texas, do hereby certify that the foregoing instrument of Writing, with its Certificate of Authentication was filed for record in my office on the ____day of_____, 20____, A.D., at ____ o'clock ____M. and duly recorded on the ____day of _____, 20____, A.D., at ____o'clock ____M. in the plat records of Hays County, Texas in CFN:_____

WITNESS MY HAND AND SEAL OF OFFICE OF THE COUNTY CLERK of said County the ____day of _____, 20____, A.D.

Liz Gonzalez, County Clerk
Hays County, Texas



AUSTIN | SAN ANTONIO | HOUSTON | FORT WORTH | DALLAS
10801 N. MOPAC EXPY, BLDG. 3, SUITE 200 | AUSTIN, TX 78759 | 512.454.8711
TBPE FIRM REGISTRATION #470 | TBPLS FIRM REGISTRATION #10028801