

Modular Connector Pipe Screen

Trash Capture

Comprehensive Stormwater Solutions

Bio  Clean
A Forterra Company



OVERVIEW

The Bio Clean Modular Connector Pipe Screen (MCPS) is designed to utilize existing catch basins, allowing them to efficiently capture 100% of trash and debris. This device meets the Full Trash Capture requirements pioneered in California and is approved by the California state and regional boards.

MCPS technology can be retrofitted into any curb or drop inlet to help municipalities meet current stormwater regulations and comply with their NPDES or MS4 permit. MCPS devices can be used for new site developments as the first line of defense to prevent trash and debris from reaching downstream stormwater BMPs where they can cause clogging and unnecessary maintenance burdens.

Constructed from 100% 304 perforated stainless steel, the system is feasible, effective, and built to last. An innovative curved design with multiple cross supports ensures the device can withstand several hundred pounds of pressure, far exceeding the 60-plus pound requirement by the County of Los Angeles. Its modular design

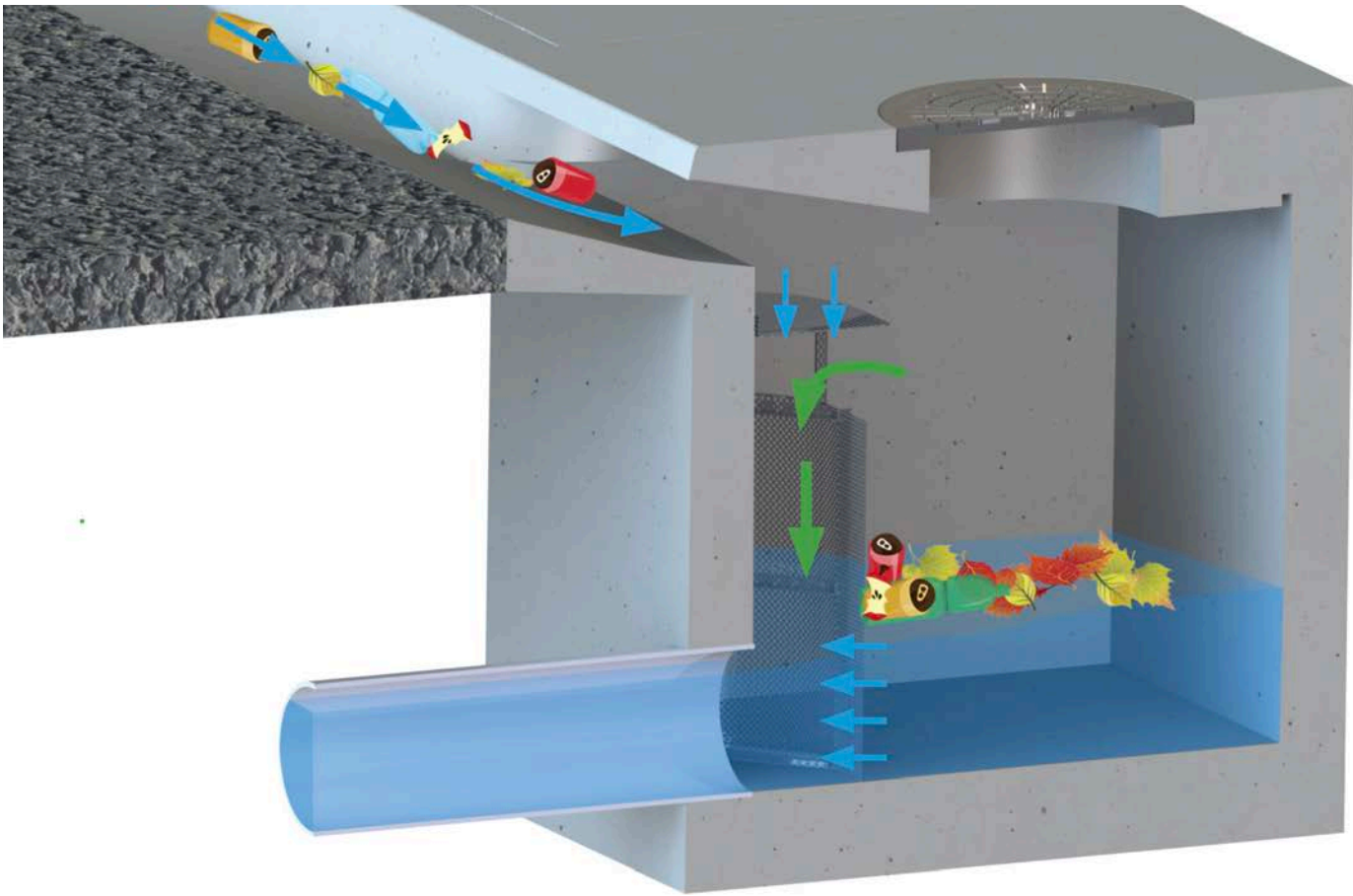
makes it easy to insert through a 24-inch diameter manhole and assemble inside the basin within minutes. The center piece comes in different lengths allowing it to be used with outlet pipe sizes up to 48 inches or greater. For catch basins with pipes exiting in the corner, the system can easily be adapted to an 'L' shape using a single corner piece and a single center piece.





ADVANTAGES

- MEETS 100% FULL TRASH CAPTURE REQUIREMENTS OF THE CALIFORNIA STATE AND REGIONAL WATER BOARDS
- 100% STAINLESS STEEL CONSTRUCTION UTILIZING ONLY PERFORATED METAL CONSTRUCTION
- MODULAR DESIGN ALLOWS IT TO BE ADAPTED TO ANY PIPE SIZE AND QUICKLY ASSEMBLED INSIDE THE CATCH BASIN
- ROUND DESIGN WITH CROSS SUPPORTS WITHSTANDS SEVERAL HUNDRED POUNDS OF WATER PRESSURE, FAR EXCEEDING ALL OTHER DEVICES.

OPERATION

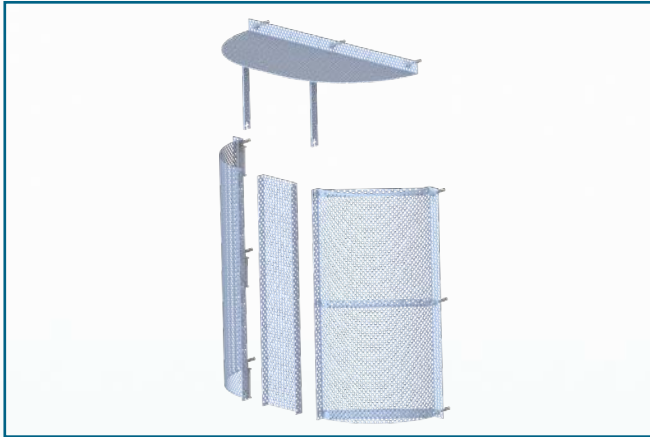


-  Treated flows enter the basin and are passed through the MCPS which retains all trash and debris down to 5 mms in size.
-  High flows are allowed to bypass over the top of the MCPS during intense storm events.

SPECIFICATIONS

PIPE SIZE (in.)	UNIT HEIGHT (in.)	LENGTH OF CENTER PIECE (in.)	ASSEMBLY WIDTH (in.)
18	18	n/a	24
24	24	6	30
30	30	12	36
36	36	18	42
42	42	24	48
48	48	30	60

INSTALLATION



The modular design of the system makes installation fast and easy. Rounded end pieces and center sections fit through any standard manhole. The system is assembled using self-tapping screws and concrete drive pins.

MAINTENANCE



The MCPS makes any catch basin a Full Trash Capture device. Maintenance of the catch basin can be performed using a standard vacuum truck or removed by hand. The center piece can be easily removed to allow access to the outlet pipe for jetting and other activities.

Bio Clean
A Forterra Company

398 Via El Centro
Oceanside, CA 92058
855.566.3938
stormwater@forterrabp.com
biocleanenvironmental.com