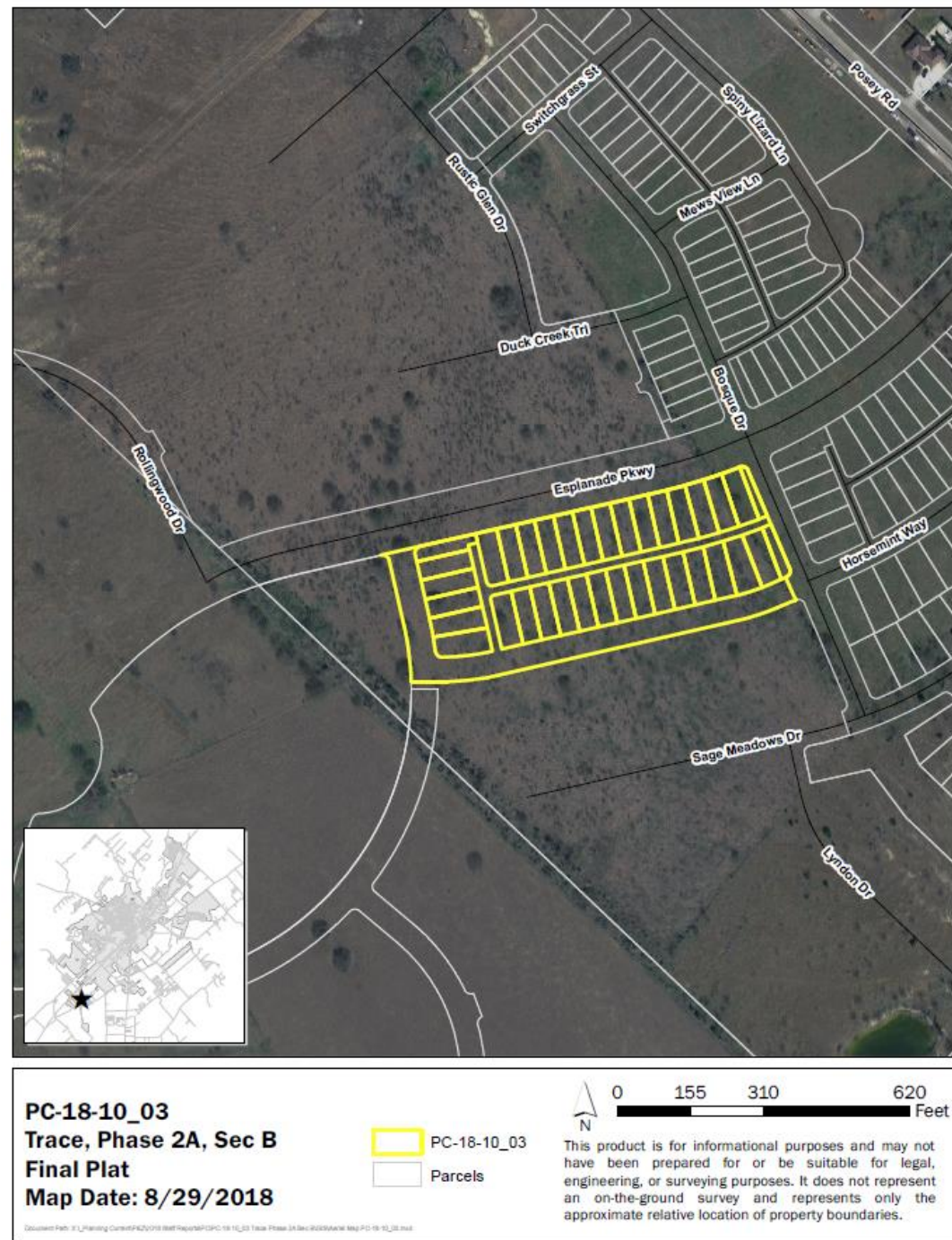


PC-18-10_03 (Trace PA, 2A, Sec B)

Consider a request by Caren Williams-Murch, on behalf of Highpointe Trace, LLC, for approval of a Final Plat for approximately 5.624 acres, more or less, out of the William Van Horn Survey No. 18, Abstract No. 464 located at the intersection of Esplanade Parkway and Bosque Drive.
(A. Villalobos)

Location:

- +/- 5.624 acres
- Zoned Planned Development District “PDD”, with a base zoning of Single-Family “SF-6”
- 33 single family lots proposed and 2 open space lots
- Surety for Public Improvements has been fulfilled through the Trace PID



Recommendation:

Staff has reviewed the request and determined the Final Plat meets all requirements of Section 3.2.3.4 and Section 3.4.2 of the Development Code as well as Ordinance 2015-042 and recommends **approval** of PC-18-10_03.