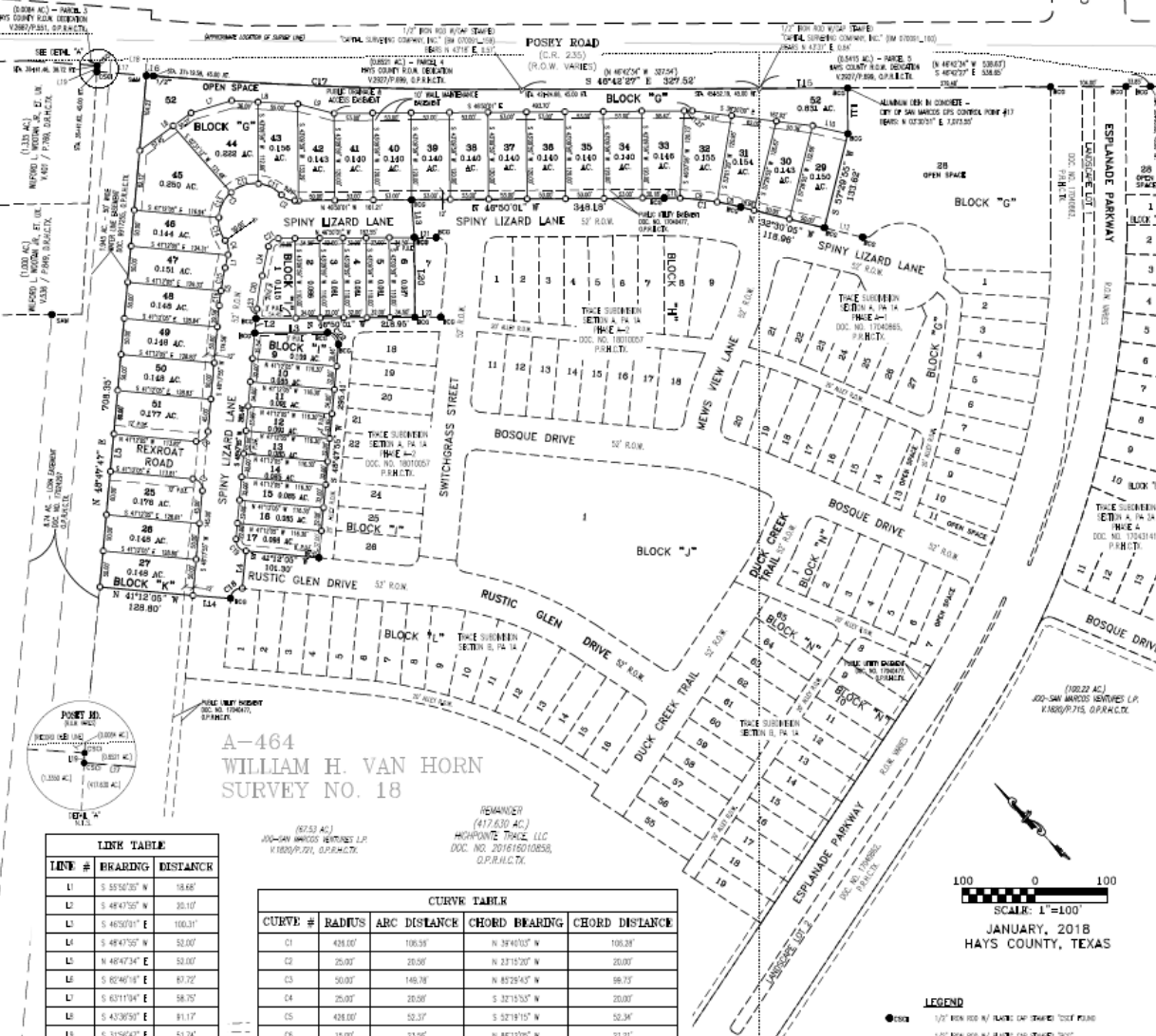


PC-18-16_03 (Trace Phase PA 1B, Section B)

Consider a request by Caren Williams-Murch, on behalf of Highpointe Trace, LLC., for approval of a Final Plat for approximately 5.06 acres, more or less, out of the Van Horn Survey, located at the intersection of Spiny Lizard Lane and Rustic Glen Drive (T. Carpenter)

This product is for informational purposes and may not have been prepared for or be suitable for legal, engineering, or surveying purposes. It does not represent an on-the-ground survey and represents only the approximate relative location of property boundaries.



Recommendation:

Staff has reviewed the request and recommends approval of PC-18-16_03