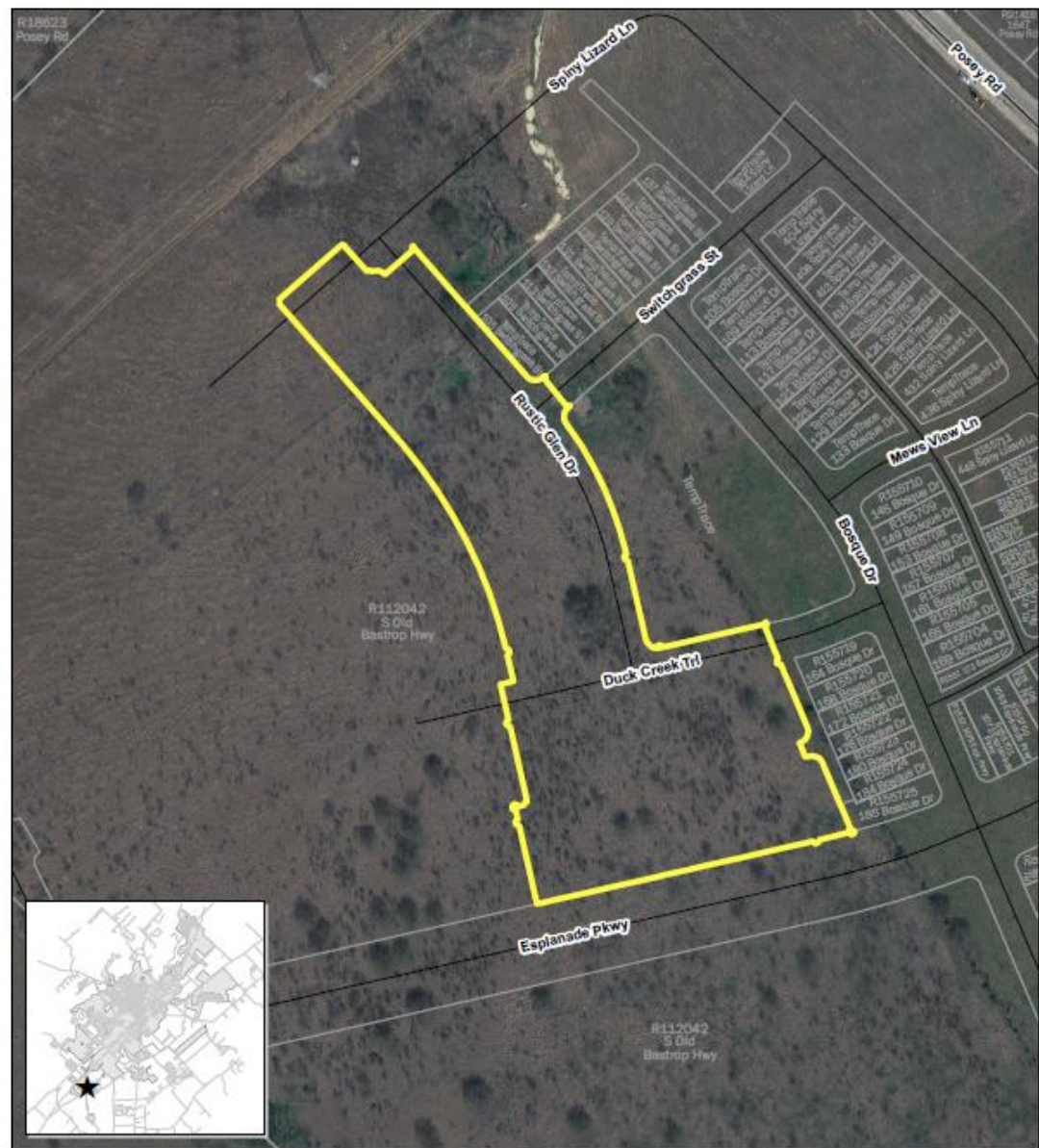


## **PC-18-15\_03 (Trace Phase PA 1A, Section B)**

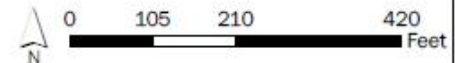
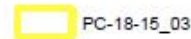
Consider a request by Caren Williams-Murch, on behalf of Highpoint Trace, LLC, for approval of a Final Plat for approximately 7.467 acres, more or less, out of the William Van Horn Survey No. 18, Abstract No. 464 located near the intersection of Bosque Drive and Esplanade Parkway. (T. Carpenter)

## Location:

- +/- 7.467 acres
- 36 Residential Lots



**PC-18-15\_03**  
**Trace Phase PA 1A**  
**Section B**  
**Map Date: 7/9/2018**



This product is for informational purposes and may not have been prepared for or be suitable for legal, engineering, or surveying purposes. It does not represent an on-the-ground survey and represents only the approximate relative location of property boundaries.



## Recommendation:

Staff has reviewed the request and recommends approval of PC-18-15\_03