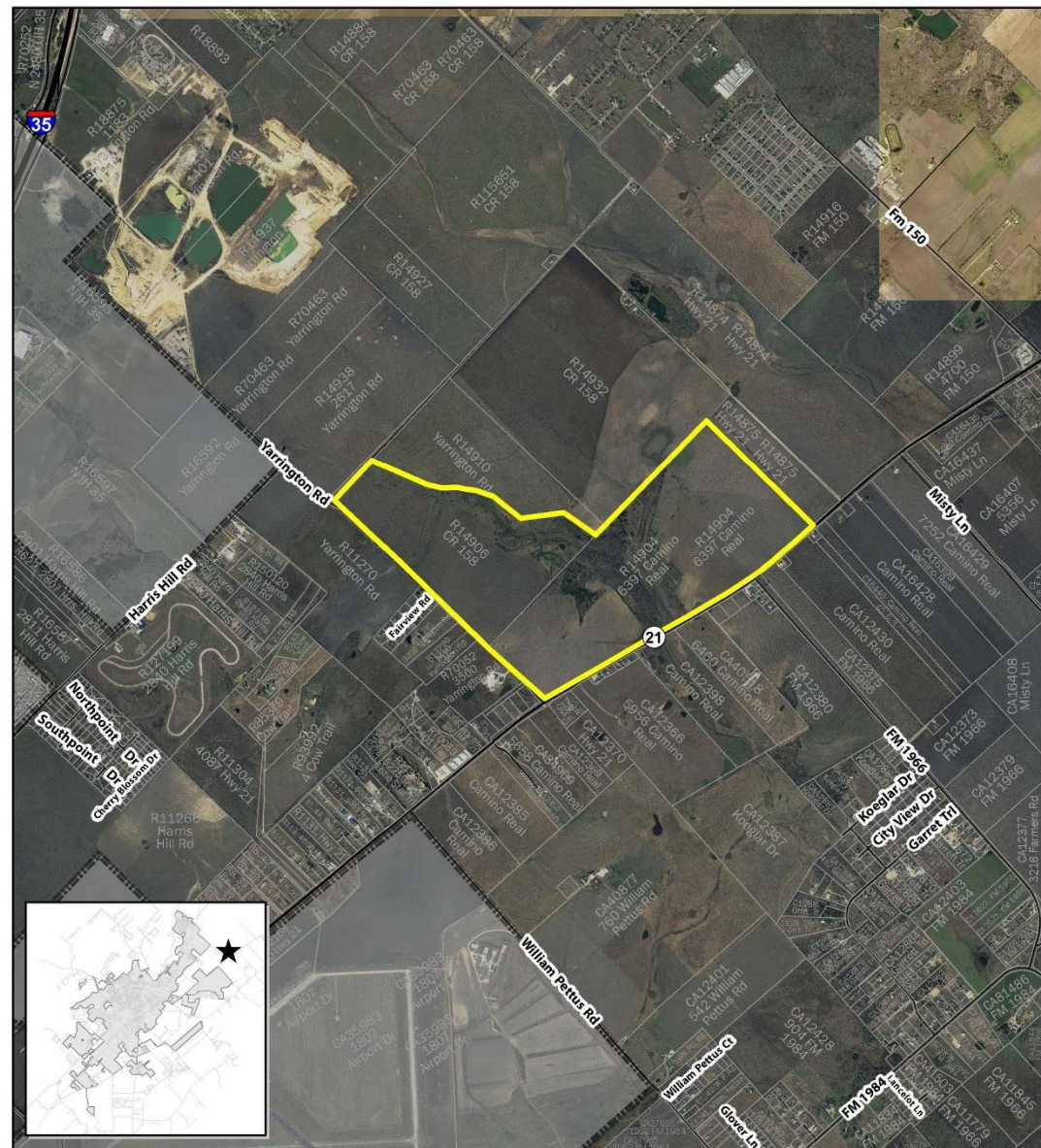


PC-17-38_02 (Sunset Oaks Subdivision Preliminary Plat)

Consider a request by Binkley & Barfield, Inc., on behalf of Kyle Three Partners, LLP, for approval of a Preliminary Plat for approximately 547.74 acres, more or less, out of the William Hemphill Survey, Abstract No. 221, located east of IH-35, at the intersection of State Highway 21 and Yarrington Road. (A. Brake)

Location:

- Intersection of Yarrington Road and State Highway 21
- Northeast of Harris Hill Raceway



PC-17-38_02
Sunset Oaks
Map Date: 4/25/2018

 City Limit
 Subject Property



0 1,875 3,750 7,500 Feet

This product is for informational purposes and may not have been prepared for or be suitable for legal, engineering, or surveying purposes. It does not represent an on-the-ground survey and represents only the approximate relative location of property boundaries.

THIS PLAN SET FOR REVIEW ONLY. NOT FOR CONSTRUCTION.



Recommendations:

Staff has reviewed the request and recommends approval of the plat as submitted