

# Emerald Crown Trail Planning Phase

A Regional Trail Connecting Communities in Eastern Hays County



## Emerald Crown Trail Planning Phase

### **Overview**

- The Work Group - Partners and Stakeholders
- Work Group Ground Rules
- Purposes and Vision for the Trail
- Progress Thus Far
- Next Steps
- Wrap-up

A Regional Trail Connecting Communities in Eastern Hays County

## Emerald Crown Trail Planning Phase

### **SMGA Background**

- All volunteer nonprofit formed in 1998
- Trail crew builds/maintains trails in San Marcos natural areas
- Sponsors trail hikes and walks
- Maintains trail maps, promotes use of trails - website and social media

A Regional Trail Connecting Communities in Eastern Hays County

## Emerald Crown Trail Planning Phase

### **SMGA's Role in This Project**

- Catalyst for cooperative efforts of partners and stakeholders
- Regional trail is not a SMGA project!

A Regional Trail Connecting Communities in Eastern Hays County

## Emerald Crown Trail Planning Phase

### **Regional Trail Work Group**

**Partners:** SMGA, Hays County, cities of Kyle, Buda, San Marcos

**Stakeholders:** Guadalupe-Blanco River Trust, Meadows Center, Hill Country Conservancy, Take-a-Hike San Marcos, Texas State Univ. Geography Dept.

A Regional Trail Connecting Communities in Eastern Hays County

## Emerald Crown Trail Planning Phase

### **Work Group Ground Rules**

- All partners and stakeholders have a vote
- Meetings open to public
- Decisions by consensus
- Group will not request use of eminent domain to secure ROW
- Look for win-win opportunities with landowners and developers

A Regional Trail Connecting Communities in Eastern Hays County

## Emerald Crown Trail Planning Phase

### **Purposes for the Trail**

- Transportation – Primary purpose
- Connecting communities
- Recreation – Promoting use of parks and natural areas
- Health
- Connecting with nature

A Regional Trail Connecting Communities in Eastern Hays County

## Emerald Crown Trail Planning Phase



### **Vision for the Trail**

- Walkable and bikeable
- Wide enough for two-way traffic
- A backbone that connects to points of interest and other trails

A Regional Trail Connecting Communities in Eastern Hays County

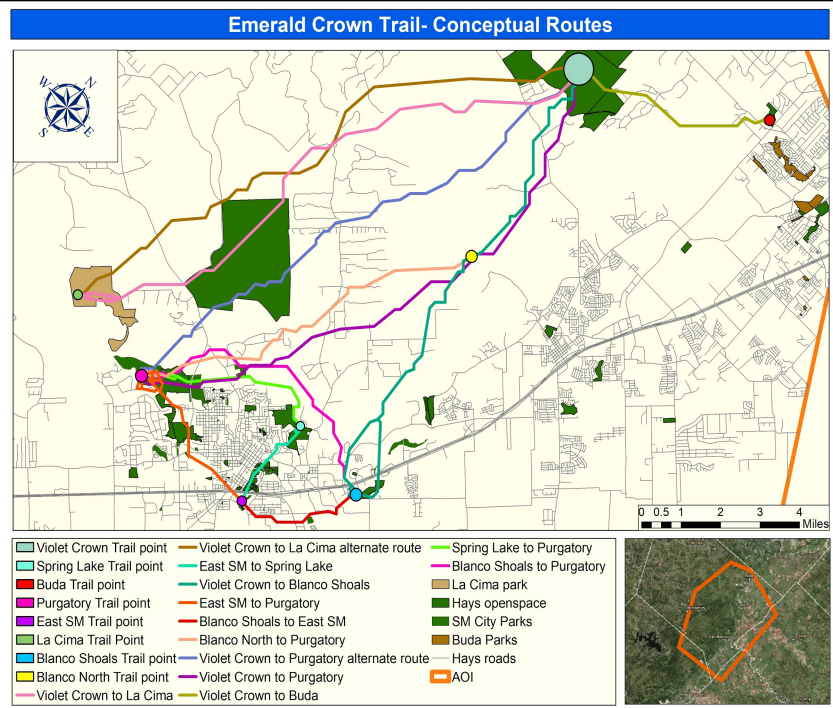
## Emerald Crown Trail Planning Phase

### Progress Thus Far

- Work Group Approved Ground Rules, Vision for the Trail, and trail name – Emerald Crown
- Community assistance award - NPS Rivers, Trails and Conservation Assistance (RTCA) program (technical, outreach, planning)
- Engaged TXST Geography GIS group for preliminary mapping of possible trail routes

A Regional Trail Connecting Communities in Eastern Hays County

### TXST GIS Class Map and analysis of Conceptual Trail Routes





## Emerald Crown Trail Planning Phase

### Next Steps

- Host public workshops in area communities
- Develop concept plan/master plan
- Identify potential funding sources
- Look for opportunities with landowners/developers
- Determine schedule and approach to construction, O&M obligations

A Regional Trail Connecting Communities in Eastern Hays County

## Emerald Crown Trail Planning Phase

### Wrap-up

- Spread the word about our proposal
- It's only a proposal at this point
- We're asking for continued involvement in the Work Group's planning process
- We may request assistance from your parks/planning/GIS/grant staffs – your direction will help

A Regional Trail Connecting Communities in Eastern Hays County

# Emerald Crown Trail Planning Phase

Questions?

Thanks from SMGA and the Work  
Group!

A Regional Trail Connecting Communities in Eastern Hays County

