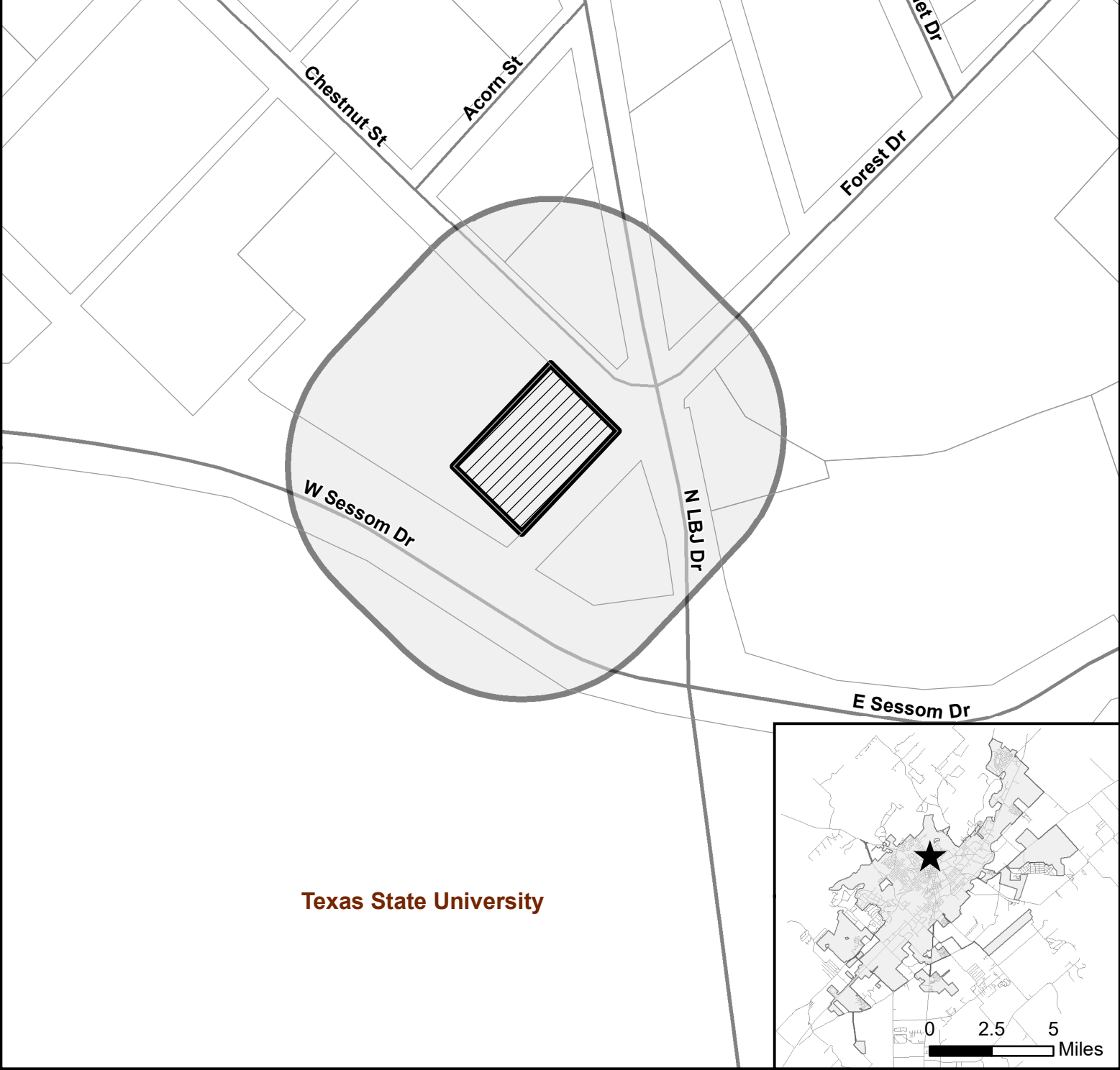




PSA-18-02/ZC-18-02
801 Chestnut St - 200 Foot Notification Buffer
Map Date: 1/23/2018

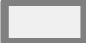





Site Location



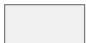
PSA-18-02/ZC-18-02



200 Foot Buffer




Parcels




City Limit

0 100 200 300 400



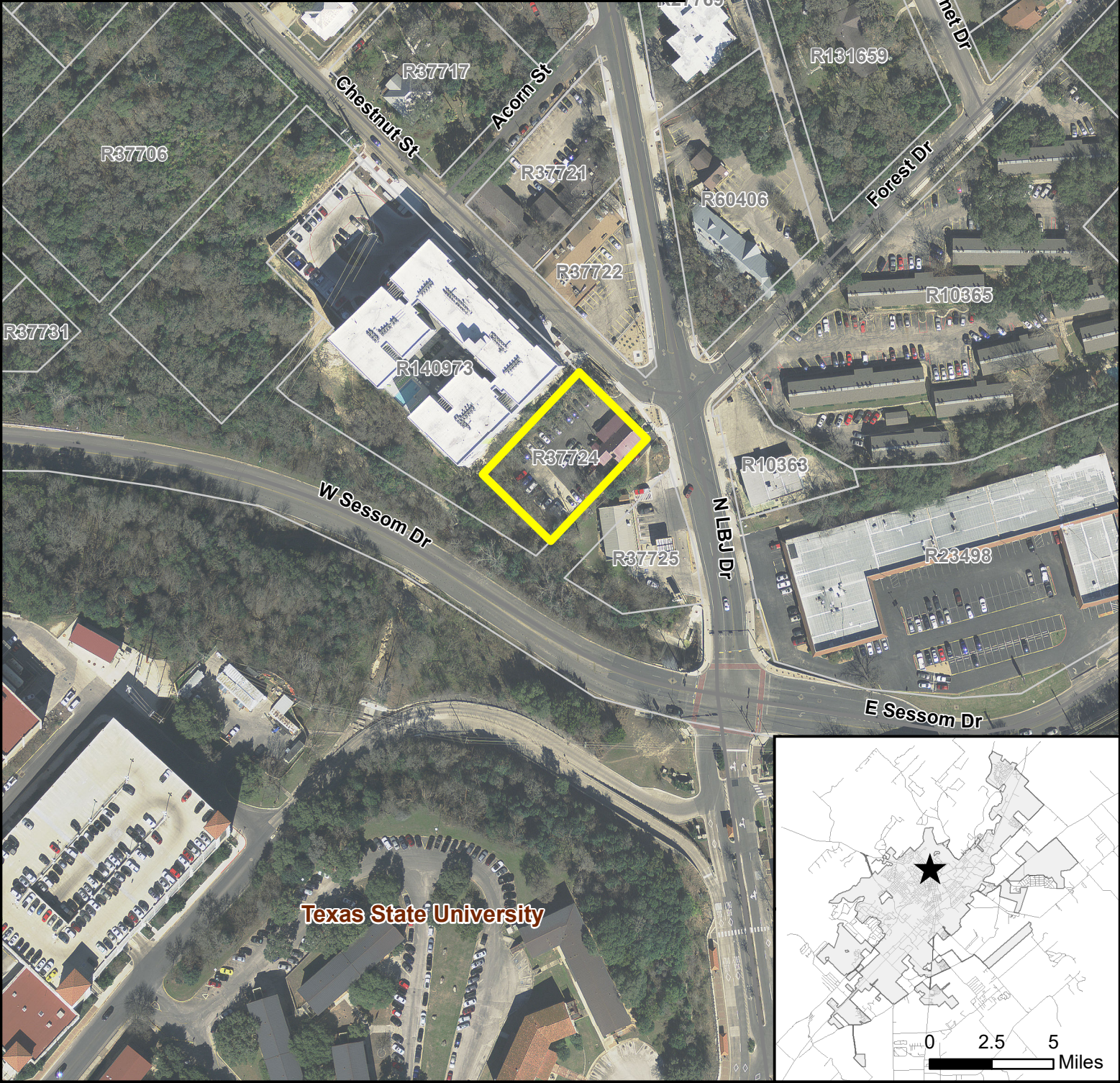
Feet



This product is for informational purposes and may not have been prepared for or be suitable for legal, engineering, or surveying purposes. It does not represent an on-the-ground survey and represents only the approximate relative location of property boundaries.

Document Path: G:_Planning Current\P&Z\2018 Staff Reports\PSA\PSA-18-02 801 Chestnut\GIS\PSA-18-02_BufferedNotification.mxd

PSA-18-02/ZC-18-02
801 Chestnut St - Aerial View
Map Date: 1/23/2018



Site Location



PSA-18-02/ZC-18-02



Parcels



City Limit

0 100 200 300 400 Feet

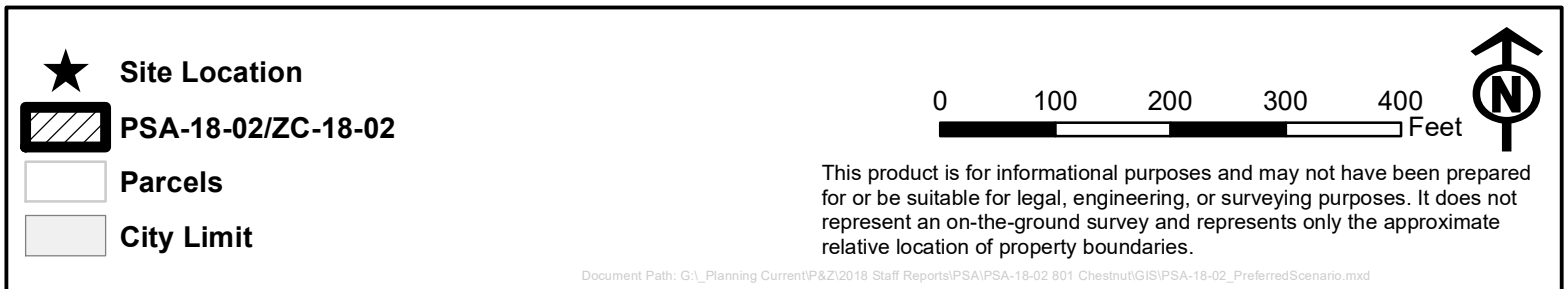
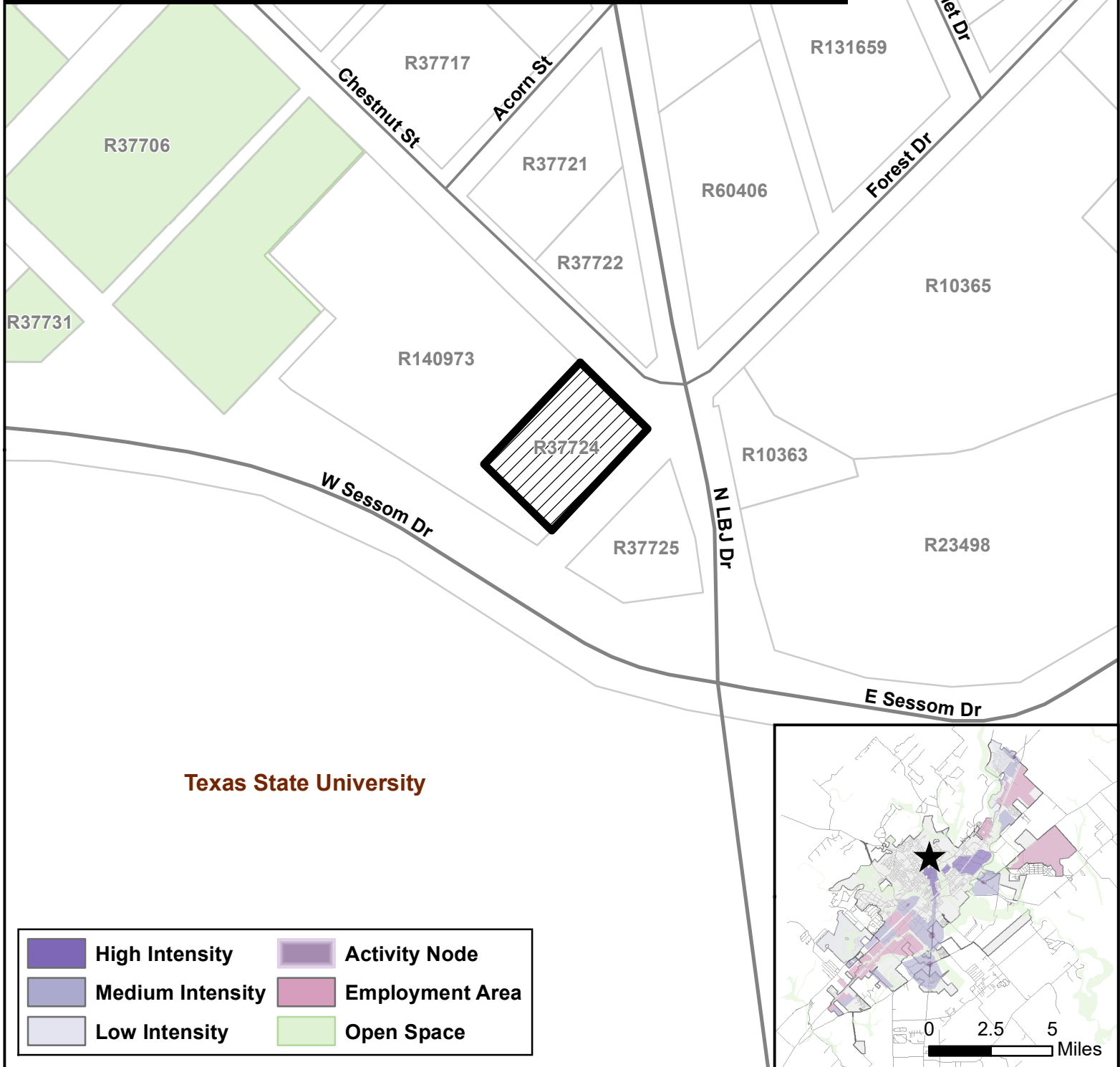


This product is for informational purposes and may not have been prepared for or be suitable for legal, engineering, or surveying purposes. It does not represent an on-the-ground survey and represents only the approximate relative location of property boundaries.

PSA-18-02/ZC-18-02

801 Chestnut St - Preferred Scenario

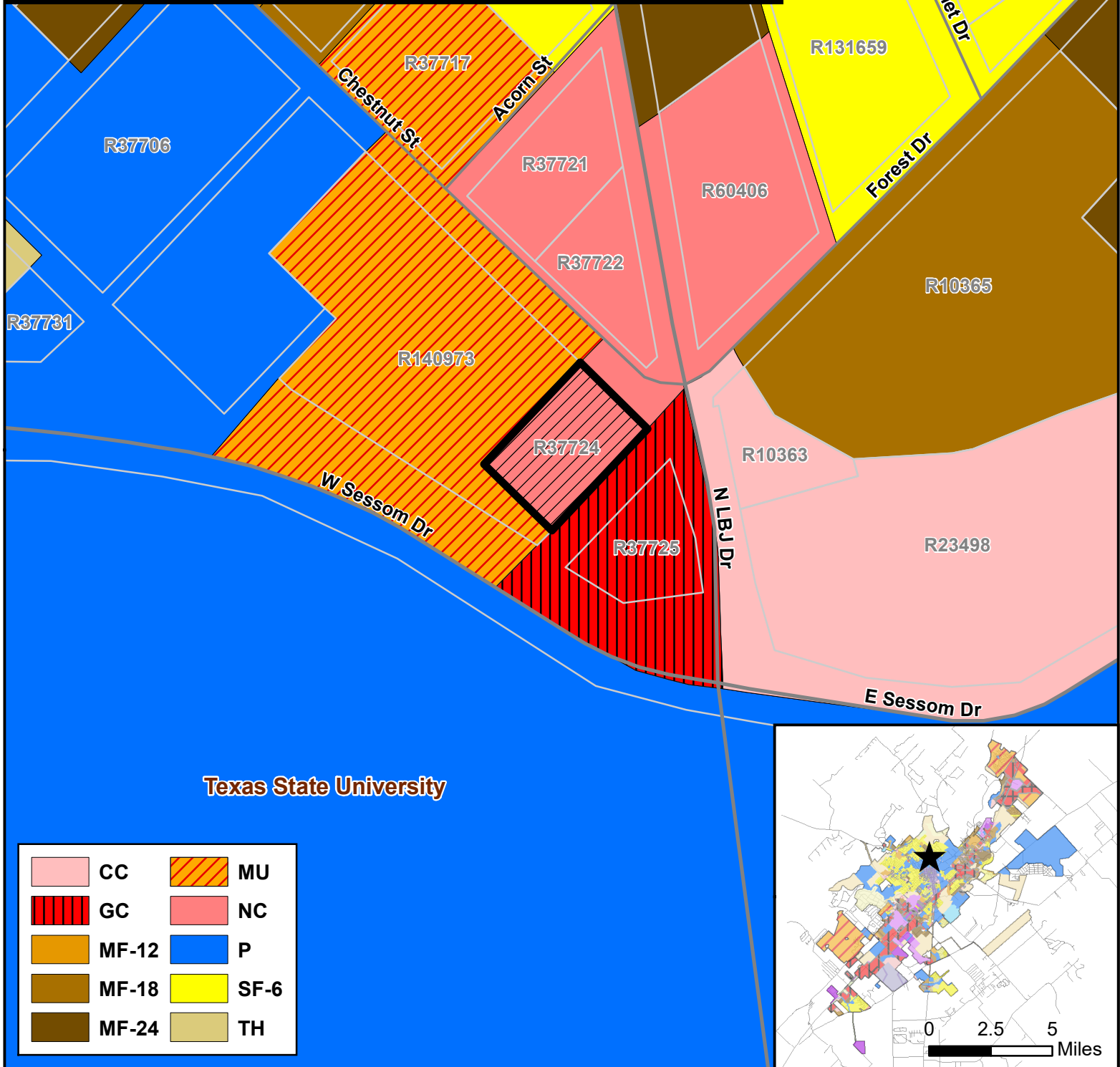
Map Date: 1/23/2018



PSA-18-02/ZC-18-02

801 Chestnut St - Existing Zoning

Map Date: 1/23/2018



- ★ Site Location
- ▨ PSA-18-02/ZC-18-02
- Parcels
- City Limit

0 90 180 270 360 Feet

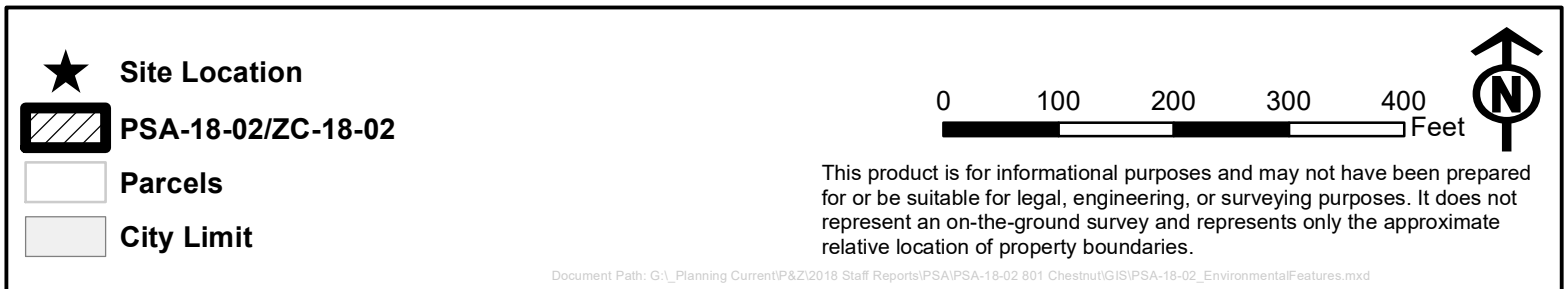
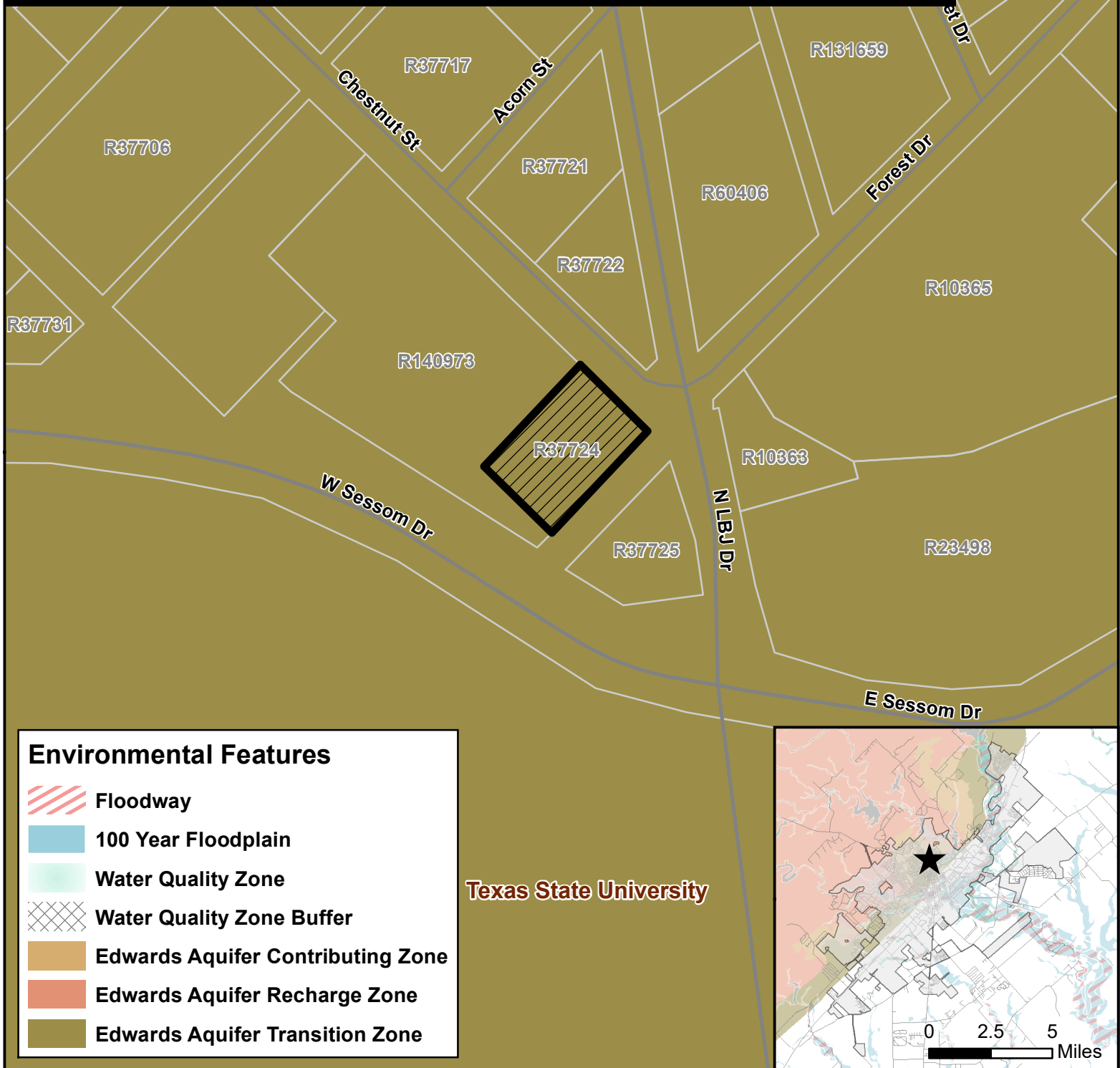


This product is for informational purposes and may not have been prepared for or be suitable for legal, engineering, or surveying purposes. It does not represent an on-the-ground survey and represents only the approximate relative location of property boundaries.

PSA-18-02/ZC-18-02

801 Chestnut St - Environmental Features

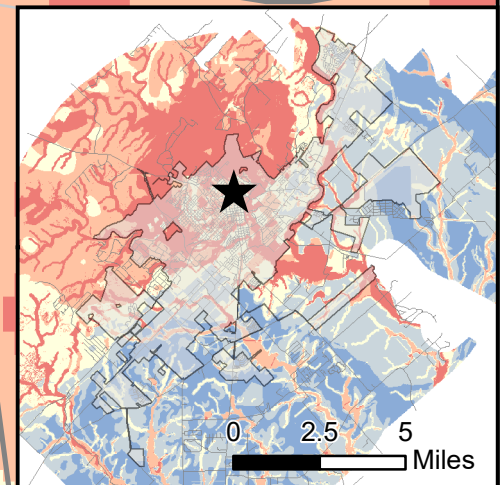
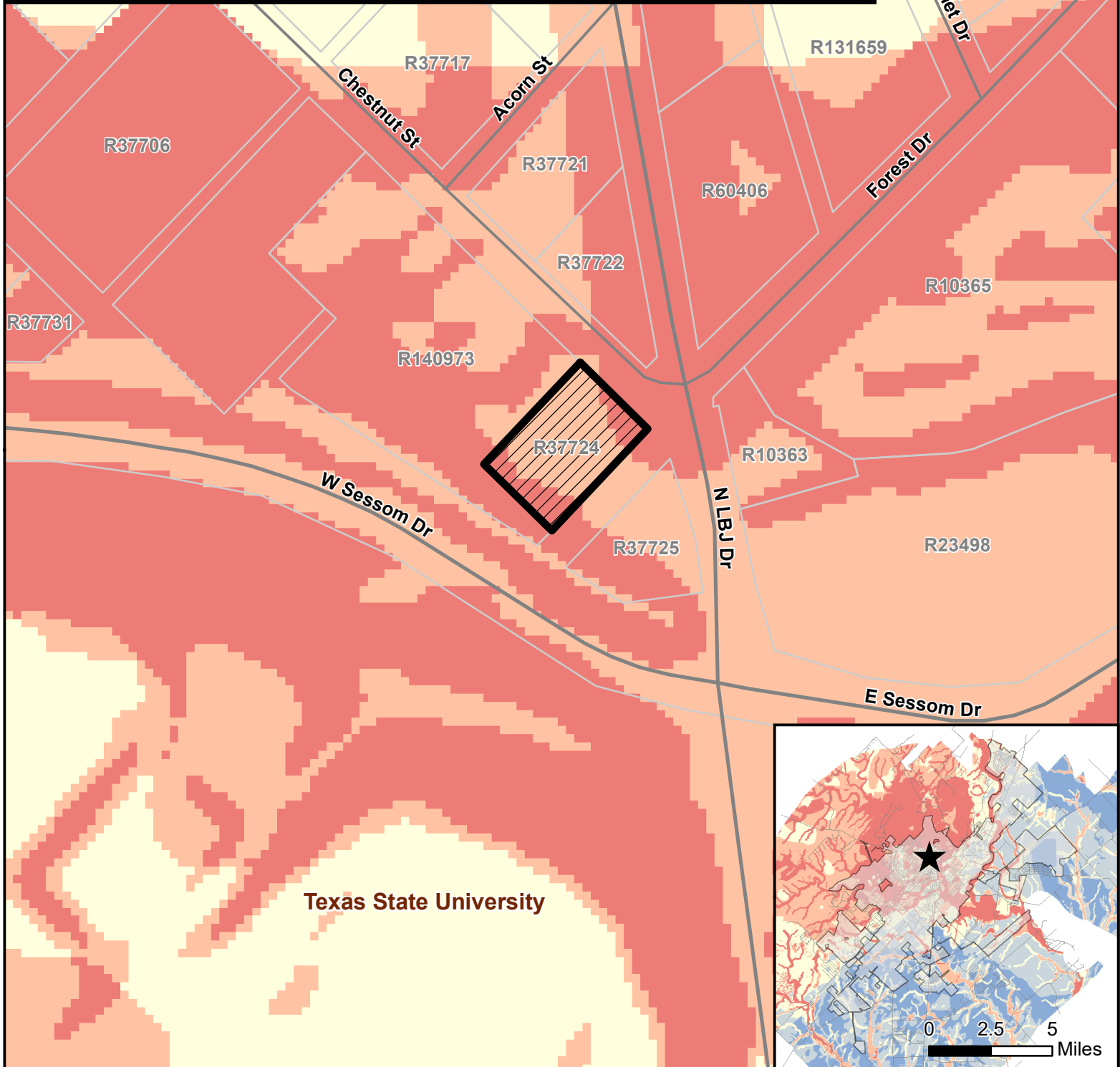
Map Date: 1/23/2018



PSA-18-02/ZC-18-02

801 Chestnut St - Land Use Suitability

Map Date: 1/23/2018



Development Constraint Key

- 1- Least Constrained
- 2
- 3 - Moderately Constrained
- 4
- 5 - Most Constrained



Site Location



PSA-18-02/ZC-18-02



Parcels



City Limit

0 90 180 270 360 Feet

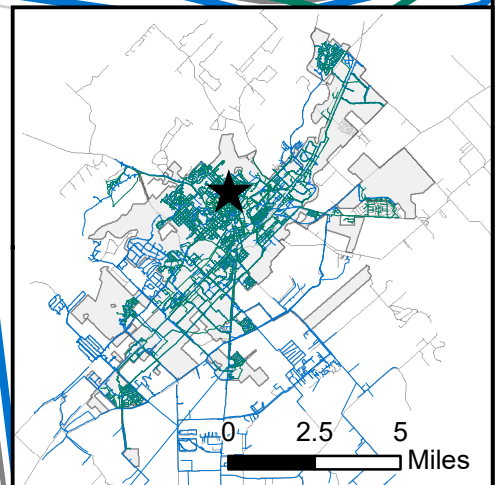
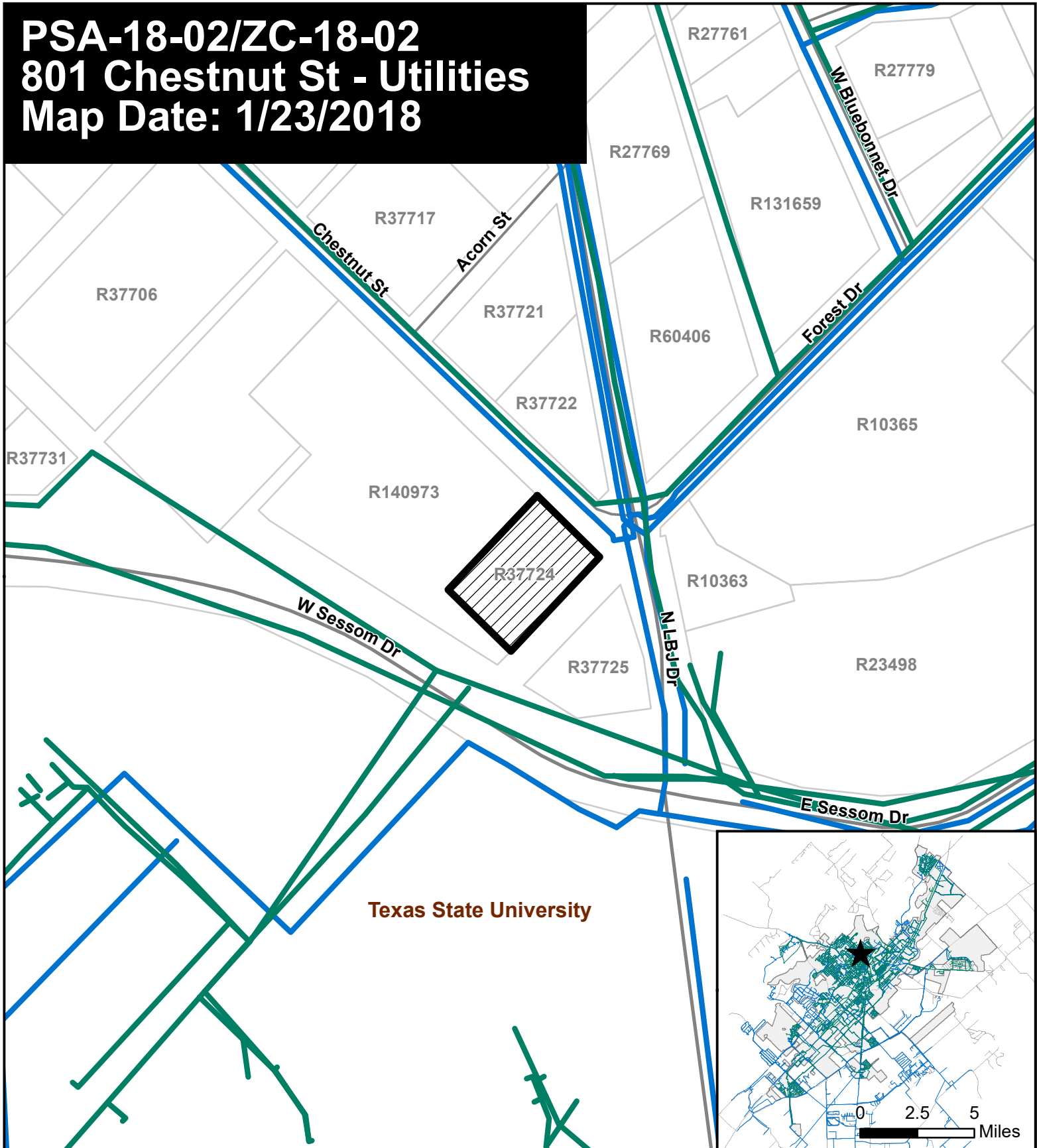


This product is for informational purposes and may not have been prepared for or be suitable for legal, engineering, or surveying purposes. It does not represent an on-the-ground survey and represents only the approximate relative location of property boundaries.

PSA-18-02/ZC-18-02

801 Chestnut St - Utilities

Map Date: 1/23/2018



- Sanitary Main
- Potable Water Line
- PSA-18-02/ZC-18-02
- Parcels
- City Limit
- Site Location

0 100 200 300 400 Feet

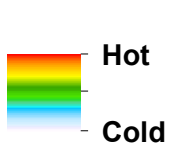
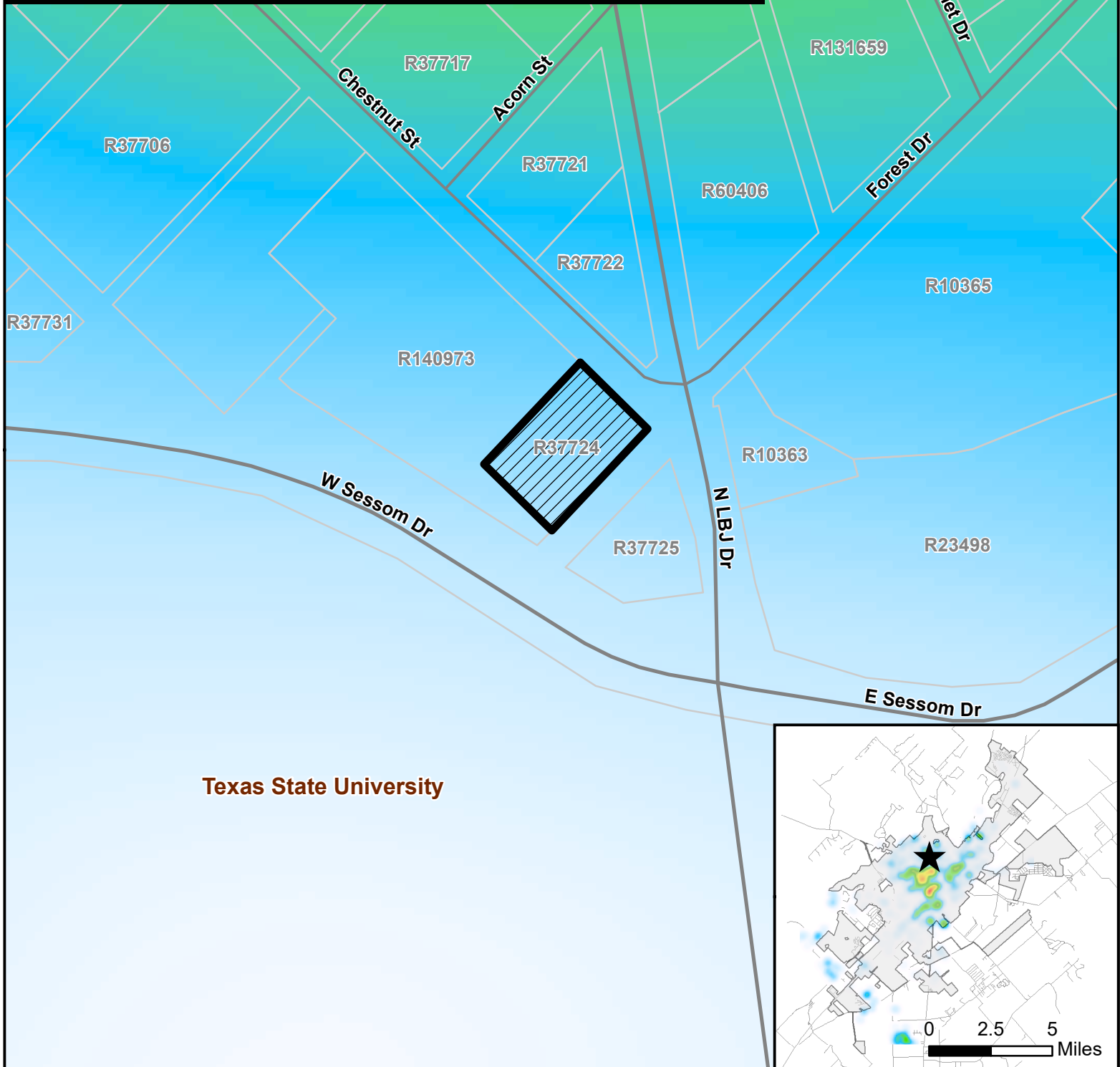


This product is for informational purposes and may not have been prepared for or be suitable for legal, engineering, or surveying purposes. It does not represent an on-the-ground survey and represents only the approximate relative location of property boundaries.

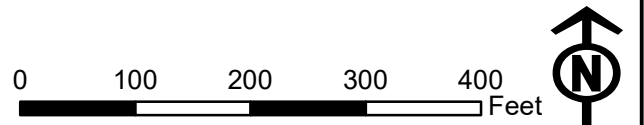
PSA-18-02/ZC-18-02

801 Chestnut St - Water Hotspots

Map Date: 1/23/2018



- ★ Site Location
- PSA-18-02/ZC-18-02
- Parcels
- City Limit

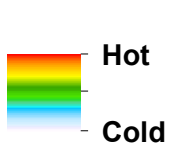
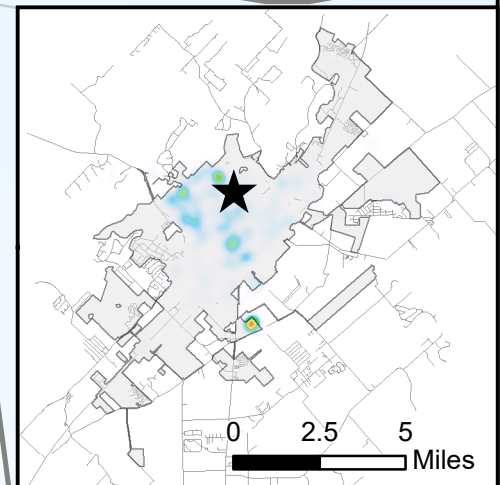
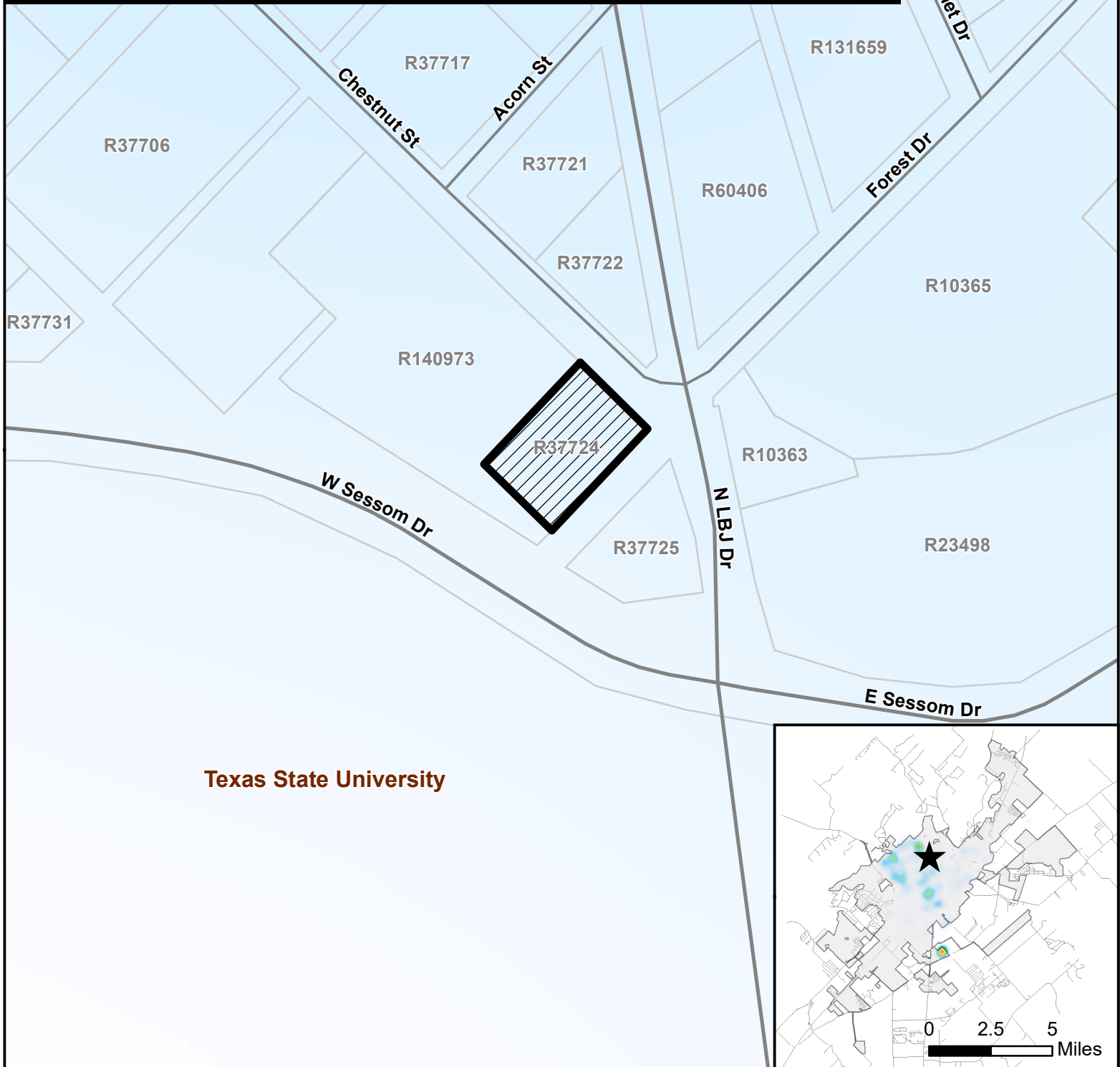


This product is for informational purposes and may not have been prepared for or be suitable for legal, engineering, or surveying purposes. It does not represent an on-the-ground survey and represents only the approximate relative location of property boundaries.

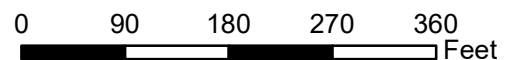
PSA-18-02/ZC-18-02

801 Chestnut St - Wastewater Hotspots

Map Date: 1/23/2018



- ★ Site Location
- ▨ PSA-18-02/ZC-18-02
- Parcels
- City Limit

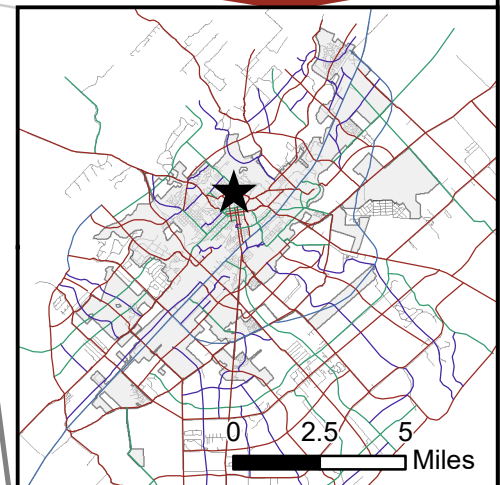
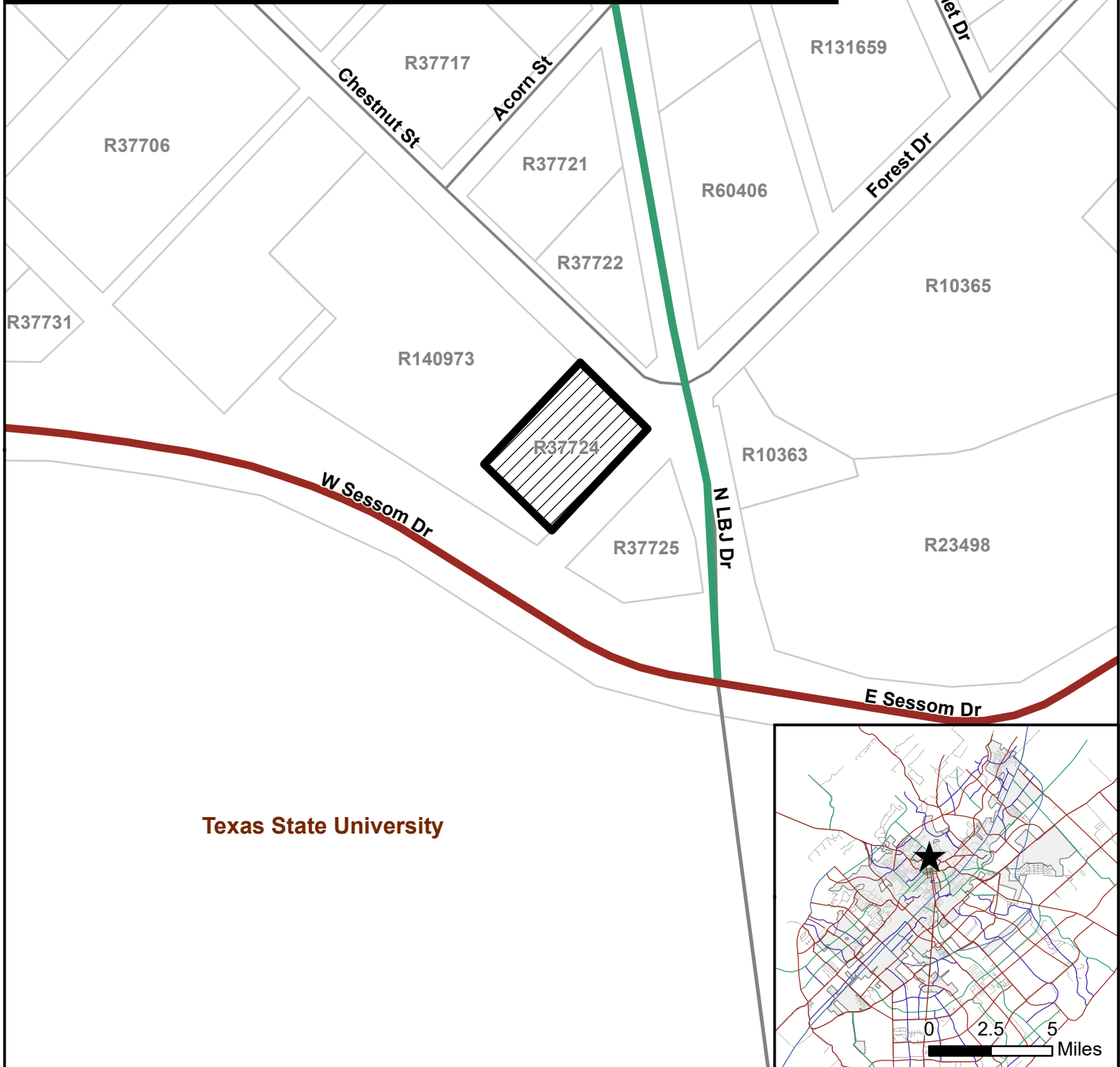


This product is for informational purposes and may not have been prepared for or be suitable for legal, engineering, or surveying purposes. It does not represent an on-the-ground survey and represents only the approximate relative location of property boundaries.

PSA-18-02/ZC-18-02

801 Chestnut St - Thoroughfare Plan

Map Date: 1/23/2018



- Collector
- Freeway
- Major Arterial
- Minor Arterial
- ★ Site Location
- PSA-18-02/ZC-18-02
- Parcels
- City Limit

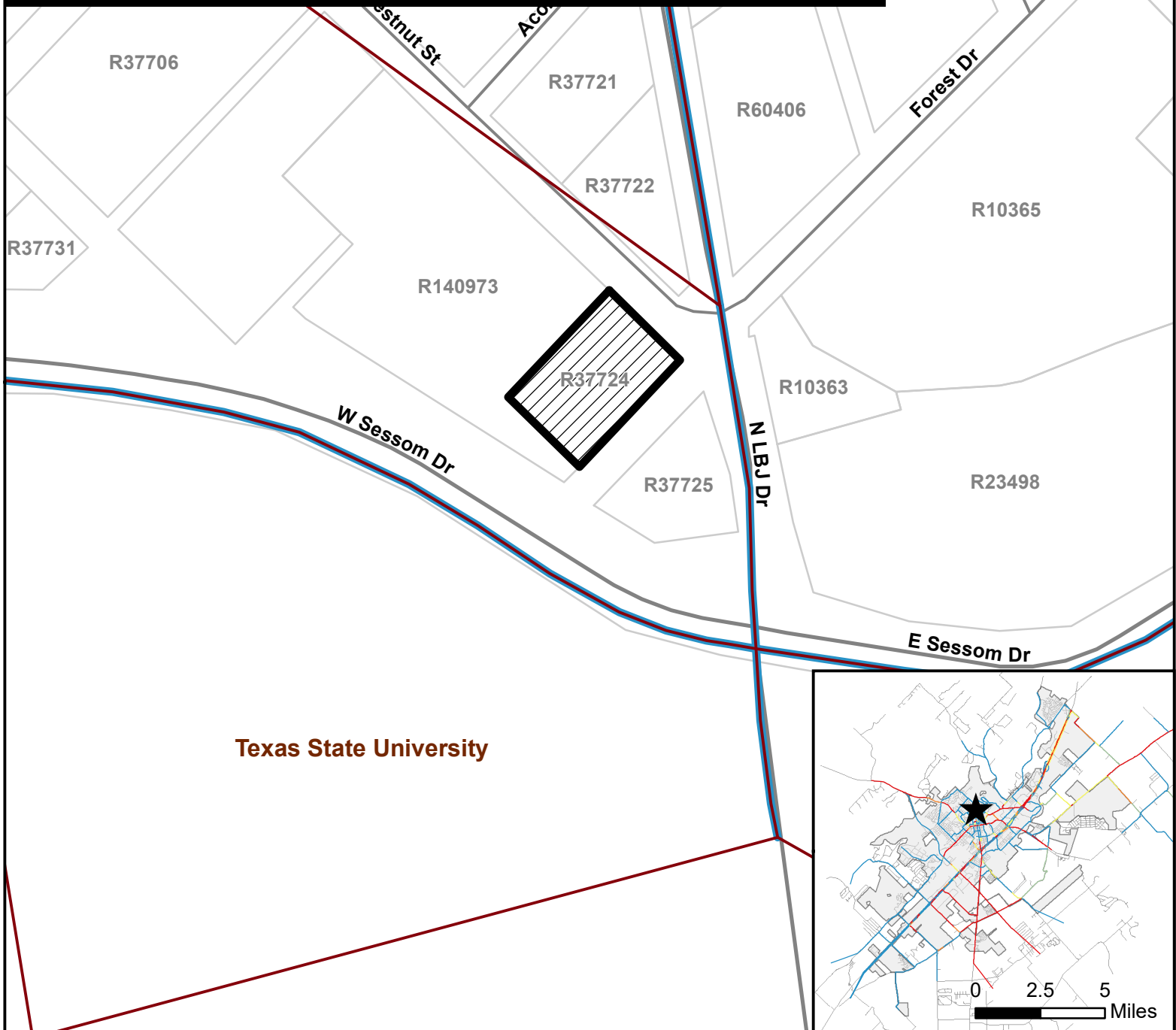
0 90 180 270 360 Feet



This product is for informational purposes and may not have been prepared for or be suitable for legal, engineering, or surveying purposes. It does not represent an on-the-ground survey and represents only the approximate relative location of property boundaries.

PSA-18-02/ZC-18-02 801 Chestnut St - TDM Existing Daily Map Date: 1/23/2018

*TDM data update anticipated
Current model based on 2013 data*



Travel Demand Model

- LOS A
- LOS B
- LOS C
- LOS D
- LOS F



Site Location



PSA-18-02/ZC-18-02



Parcels



City Limit

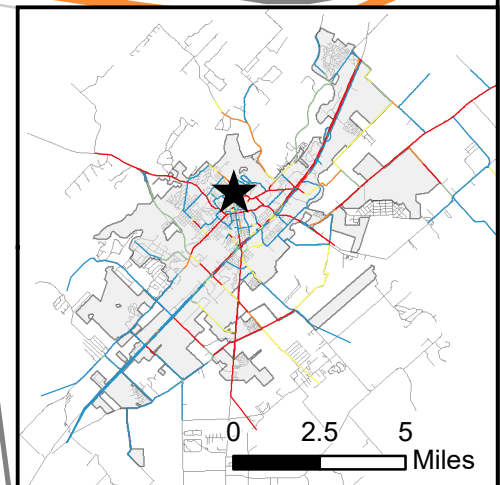
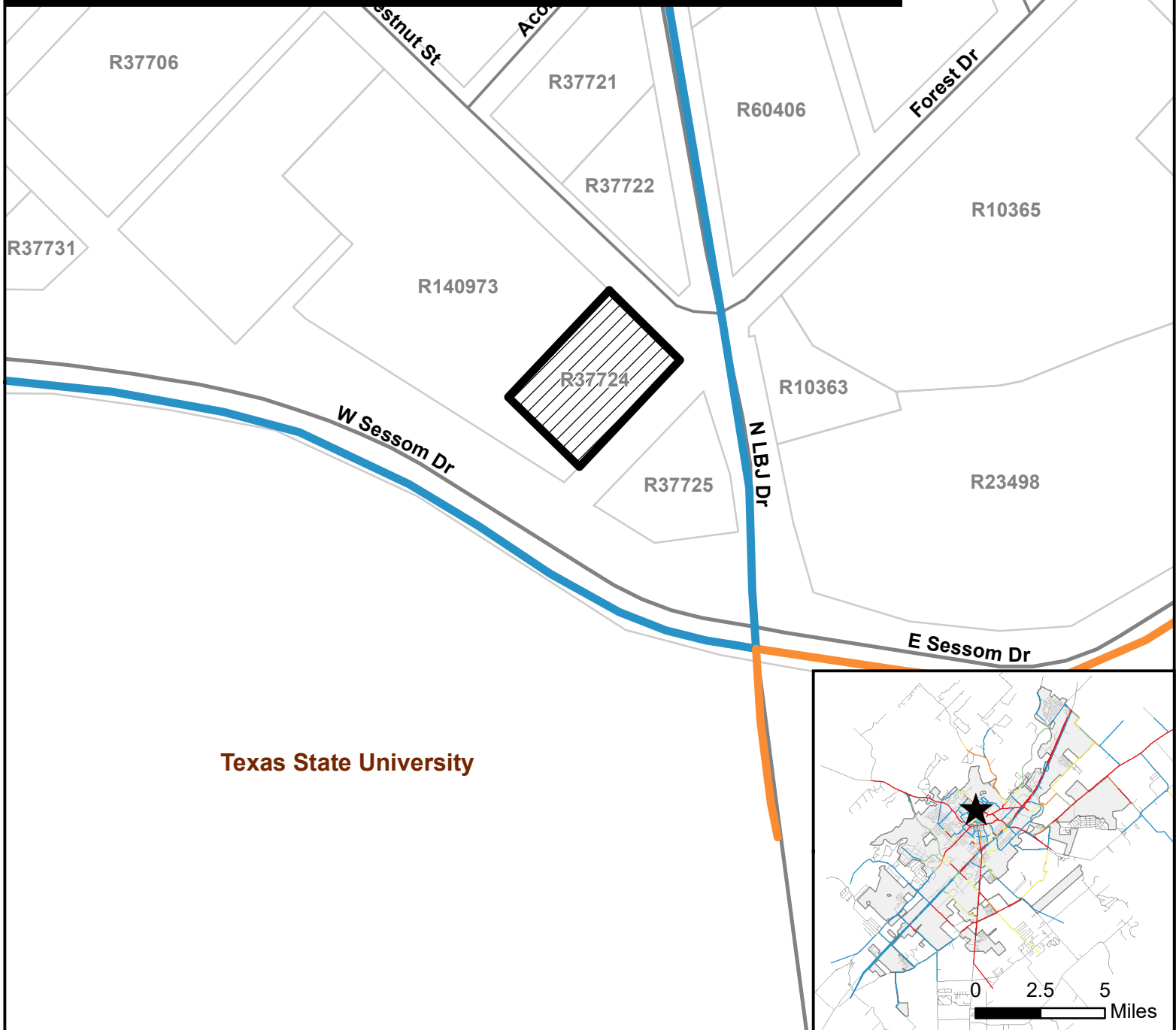
0 100 200 300 400 Feet



This product is for informational purposes and may not have been prepared for or be suitable for legal, engineering, or surveying purposes. It does not represent an on-the-ground survey and represents only the approximate relative location of property boundaries.

PSA-18-02/ZC-18-02 801 Chestnut St - TDM Existing Peak Map Date: 1/23/2018

*TDM data update anticipated
Current model based on 2013 data*



Travel Demand Model

- LOS A
- LOS B
- LOS C
- LOS D
- LOS F



Site Location



PSA-18-02/ZC-18-02



Parcels



City Limit

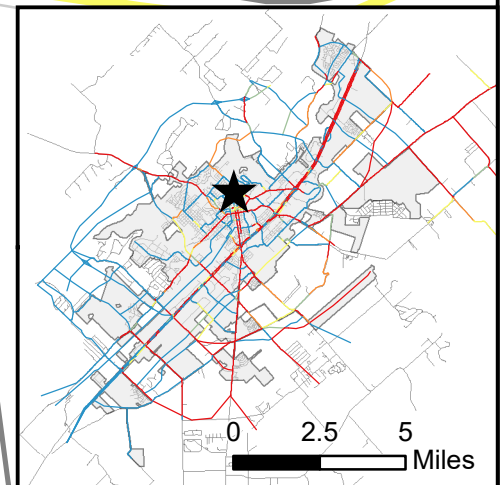
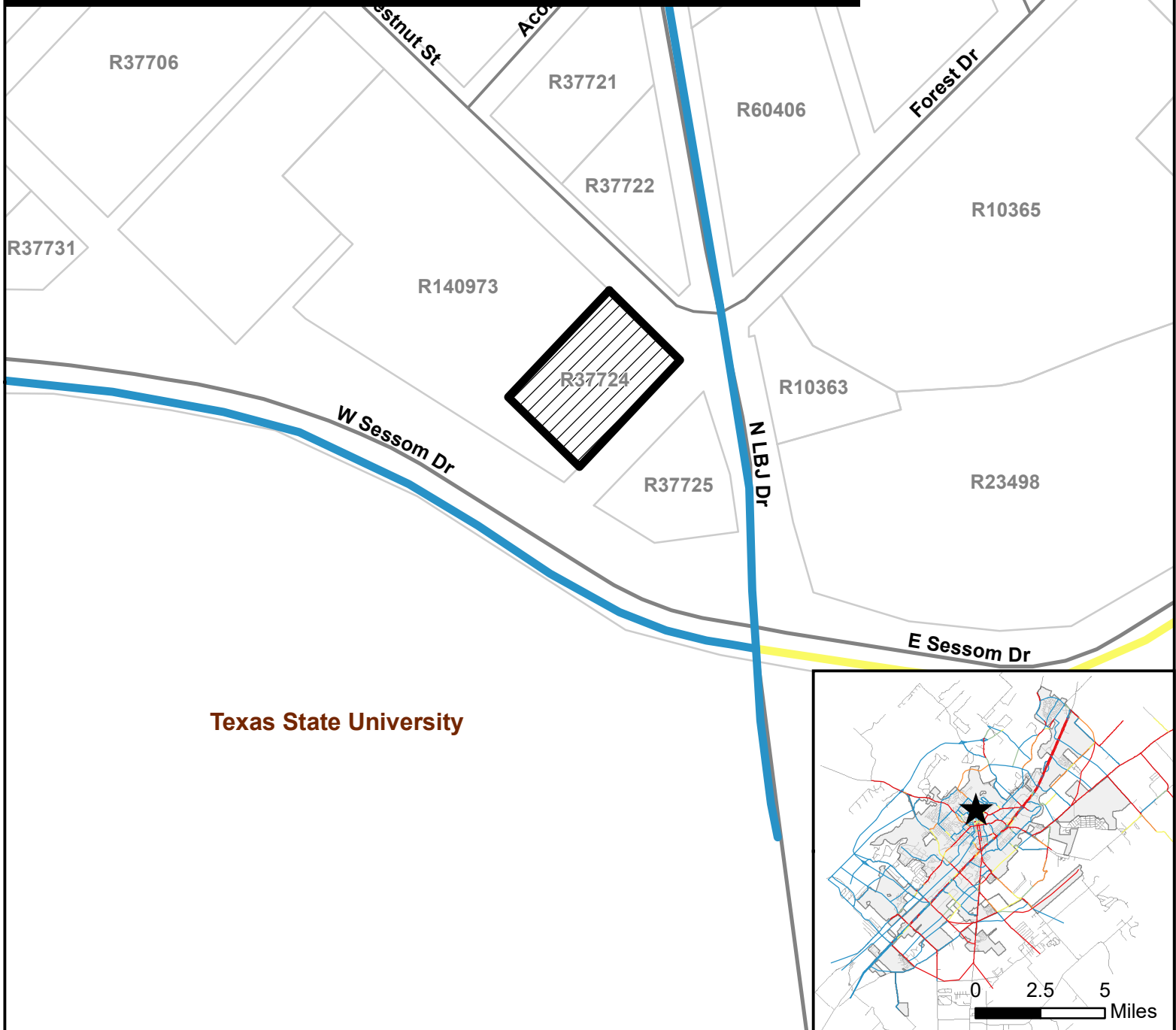
0 100 200 300 400 Feet



This product is for informational purposes and may not have been prepared for or be suitable for legal, engineering, or surveying purposes. It does not represent an on-the-ground survey and represents only the approximate relative location of property boundaries.

PSA-18-02/ZC-18-02 801 Chestnut St - TDM Future Daily Map Date: 1/23/2018

*TDM data update anticipated
Current model based on 2013 data*



Travel Demand Model

- LOS A
- LOS B
- LOS C
- LOS D
- LOS F



Site Location



PSA-18-02/ZC-18-02



Parcels



City Limit

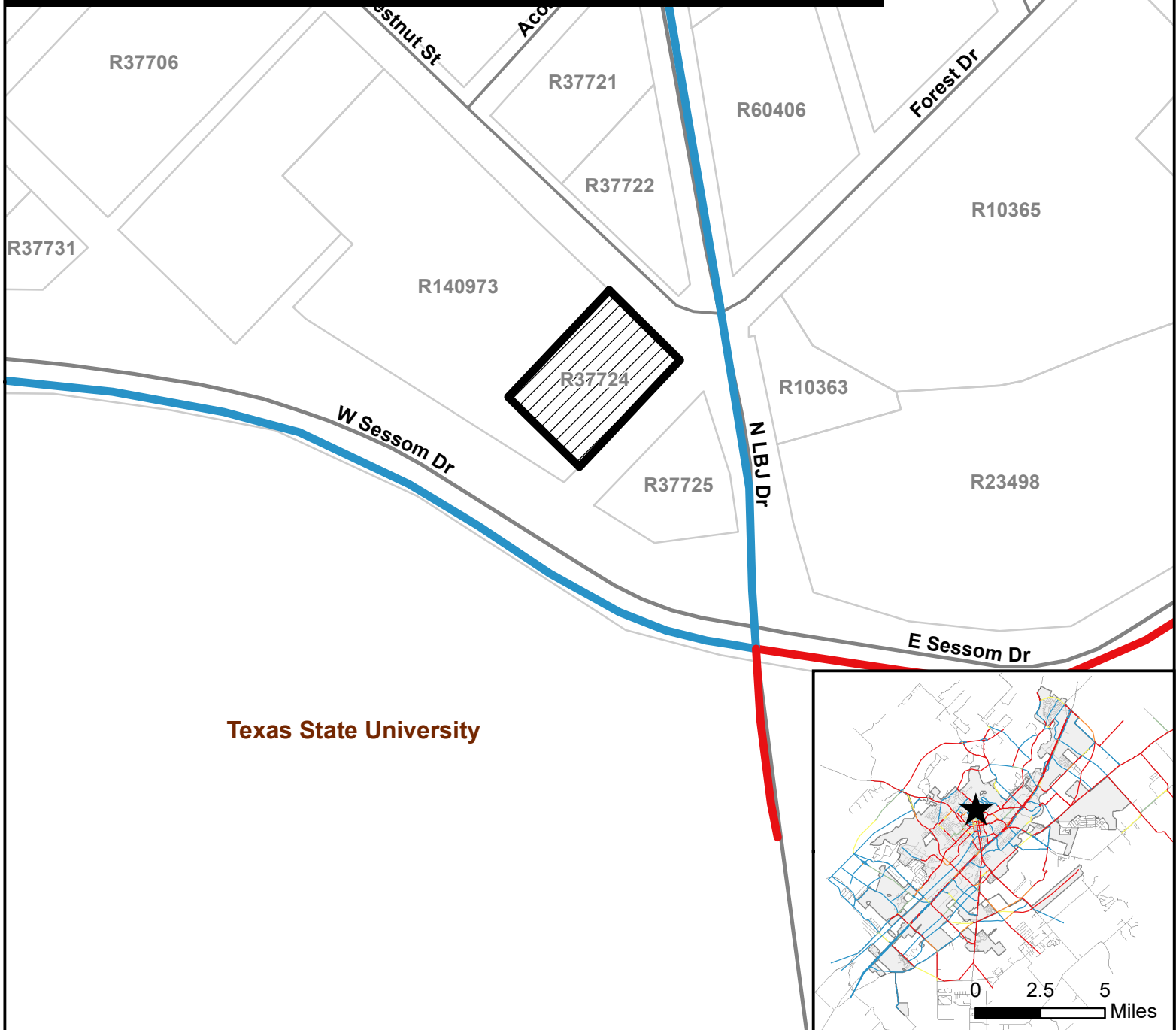
0 100 200 300 400 Feet



This product is for informational purposes and may not have been prepared for or be suitable for legal, engineering, or surveying purposes. It does not represent an on-the-ground survey and represents only the approximate relative location of property boundaries.

PSA-18-02/ZC-18-02 801 Chestnut St - TDM Future Peak Map Date: 1/23/2018

*TDM data update anticipated
Current model based on 2013 data*



Travel Demand Model

- LOS A
- LOS B
- LOS C
- LOS D
- LOS F



Site Location



PSA-18-02/ZC-18-02



Parcels



City Limit

0 90 180 270 360 Feet



This product is for informational purposes and may not have been prepared for or be suitable for legal, engineering, or surveying purposes. It does not represent an on-the-ground survey and represents only the approximate relative location of property boundaries.