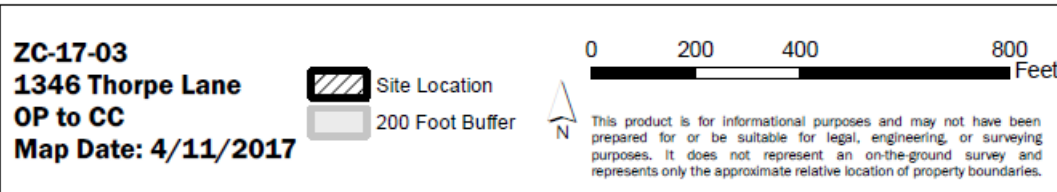
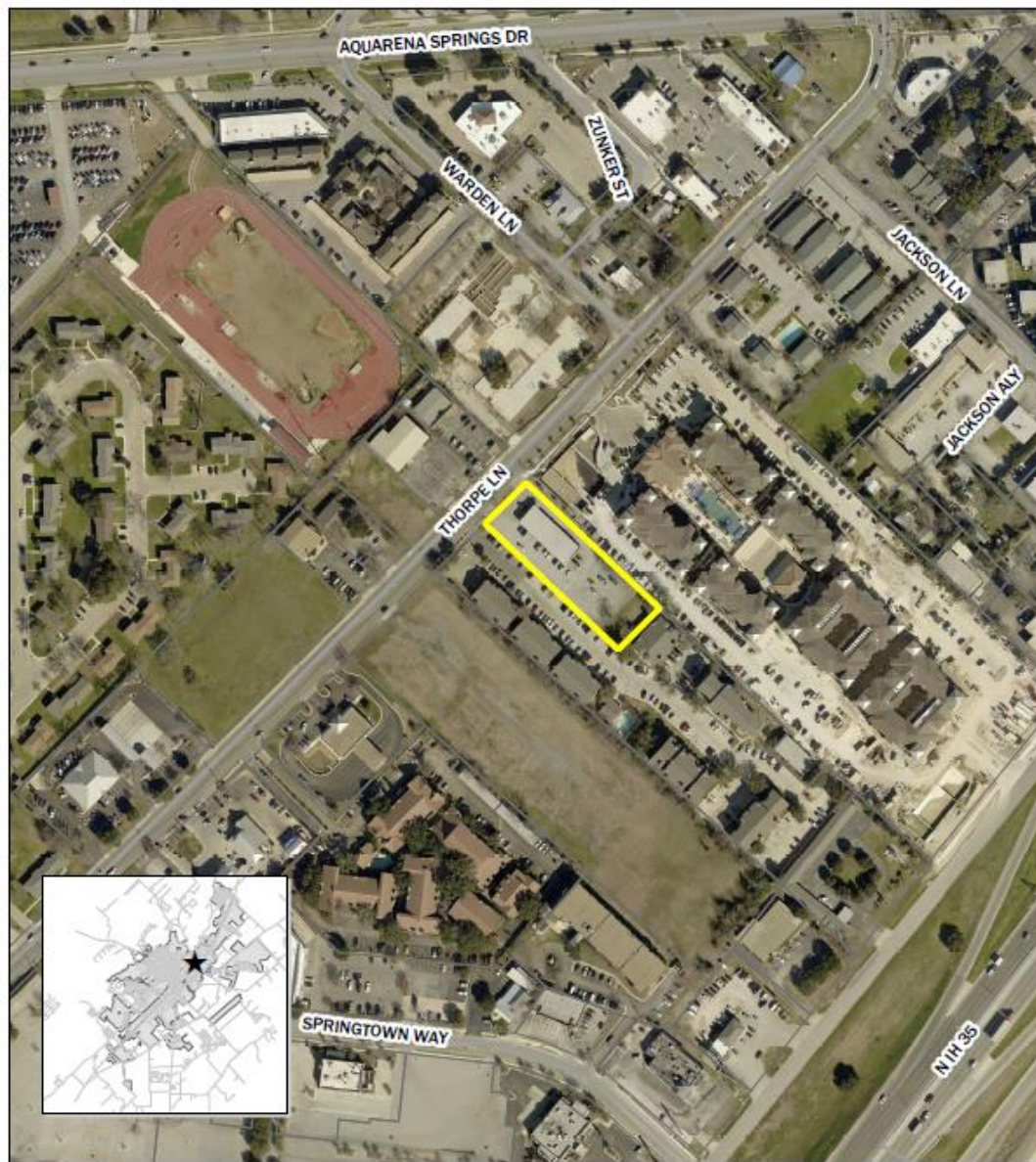


Hold a public hearing and consider a request by Scott Phillips, on behalf of 1346 Thorpe Lane, LTD, for a Zoning Change from Office Professional (OP) to Community Commercial (CC) for approximately 0.951 acres of land, more or less, out of the J.M. Veramendi Survey, Abstract 17, Hays County, located at 1346 Thorpe Lane. (A. Villalobos)



Aerial and Summary

- Approximately 0.951 acres
- Existing one-story multi-tenant building on property with office / medical uses
- Located within Midtown High Intensity Zone
- Currently zoned Office Professional (OP), requesting Community Commercial (CC) zoning
- The applicant intends to lease the remaining vacant suites with retail and restaurant uses



ZC-17-03
1346 Thorpe Lane
OP to CC
Map Date: 4/11/2017

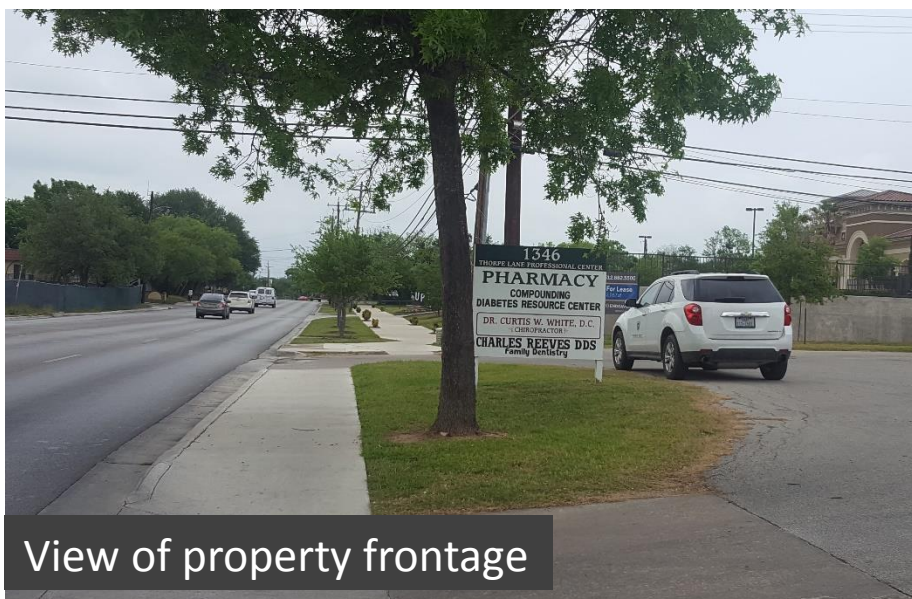
 Site Location

0 200 400 800 Feet



This product is for informational purposes and may not have been prepared for or be suitable for legal, engineering, or surveying purposes. It does not represent an on-the-ground survey and represents only the approximate relative location of property boundaries.

Site Photos



ZC-17-03

Staff Recommendation

Staff recommends approval of ZC-17-03 as submitted.