

ROW to TxST from COSM

ROW to TxST from COSM
w Easement Reservation

ROW to COSM from TxST

Easement to COSM from TxST

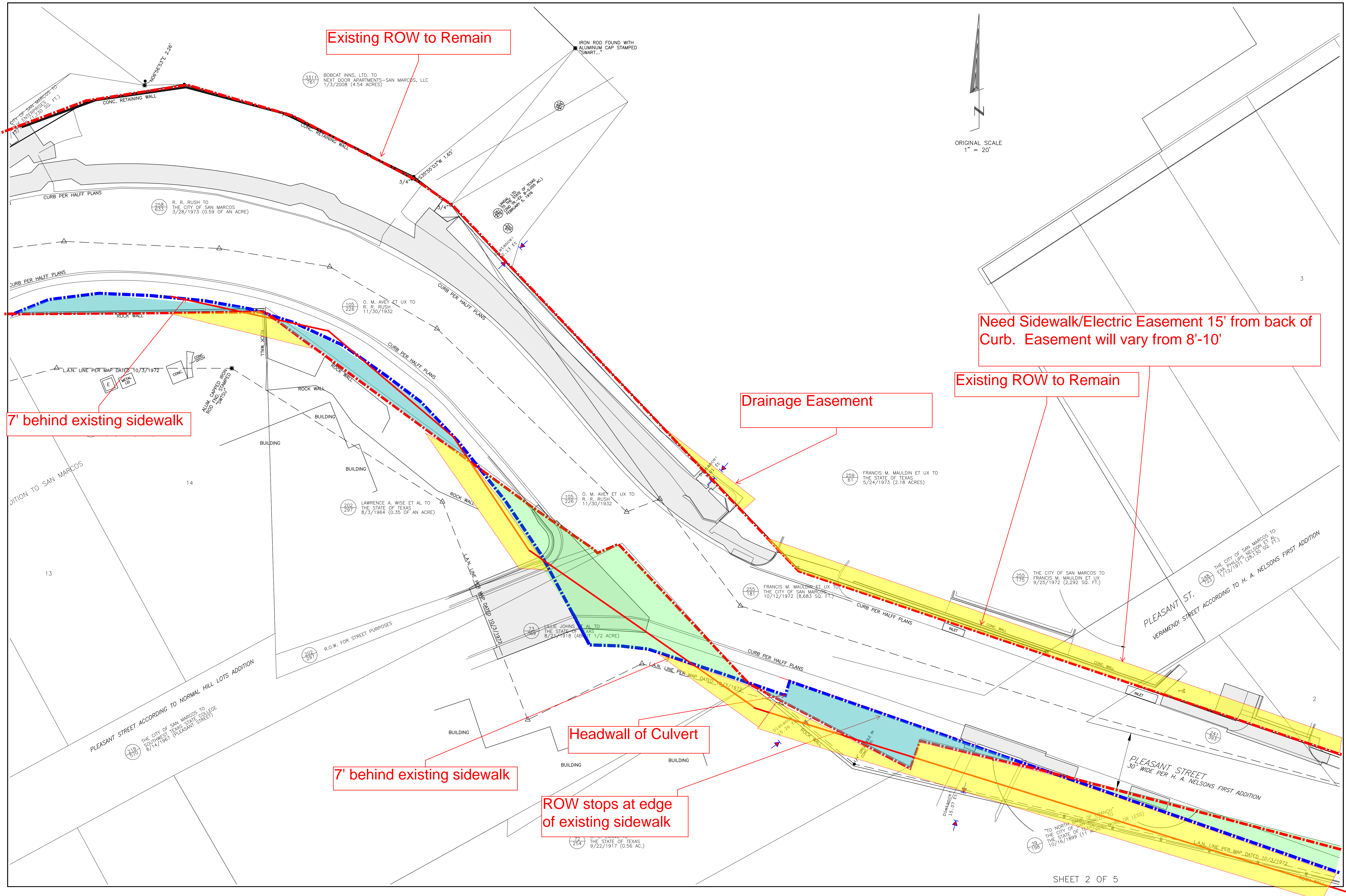
Existing ROW

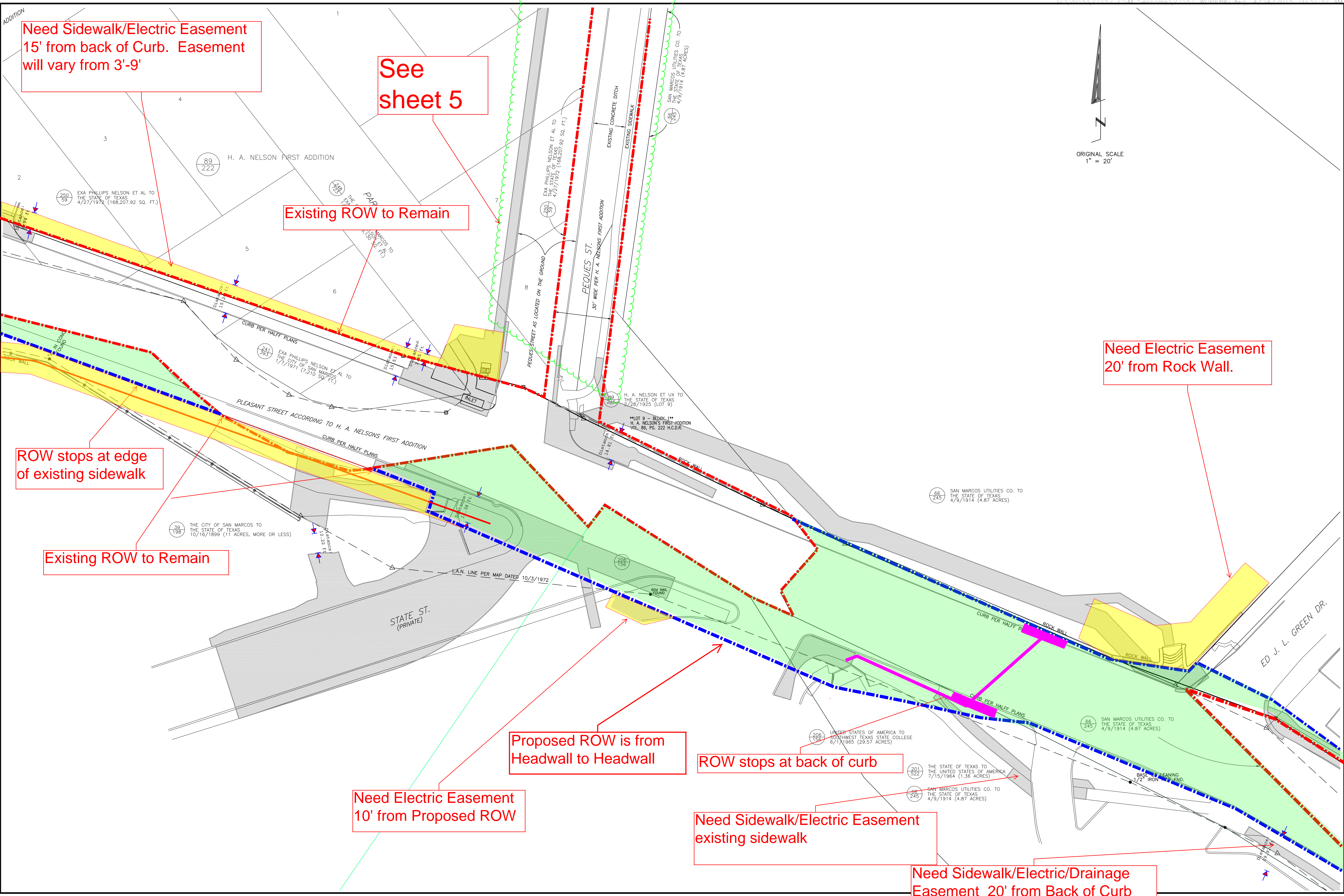
Proposed ROW

COSM OH Utility line

BYRN & ASSOCIATES, INC.
ENGINEERS SURVEYORS
P.O. BOX 1433 SAN MARCOS, TEXAS 78667
PHONE 512-396-2270 FAX 512-392-2945

PLAT OF SESSOMS DRIVE
FROM NORTH L.B.J. TO
AQUARENA SPRINGS DRIVE,
CITY OF SAN MARCOS,
HAYS COUNTY, TEXAS





Need Sidewalk/Electric Easement
15' from back of Curb. Easement
will vary from 3'-9'

See
sheet 5

Existing ROW to Remain

ROW stops at edge of
existing sidewalk

Existing ROW to Remain

Proposed ROW is from
Headwall to Headwall

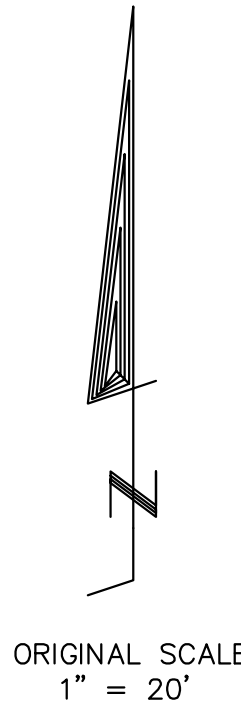
Need Electric Easement
10' from Proposed ROW

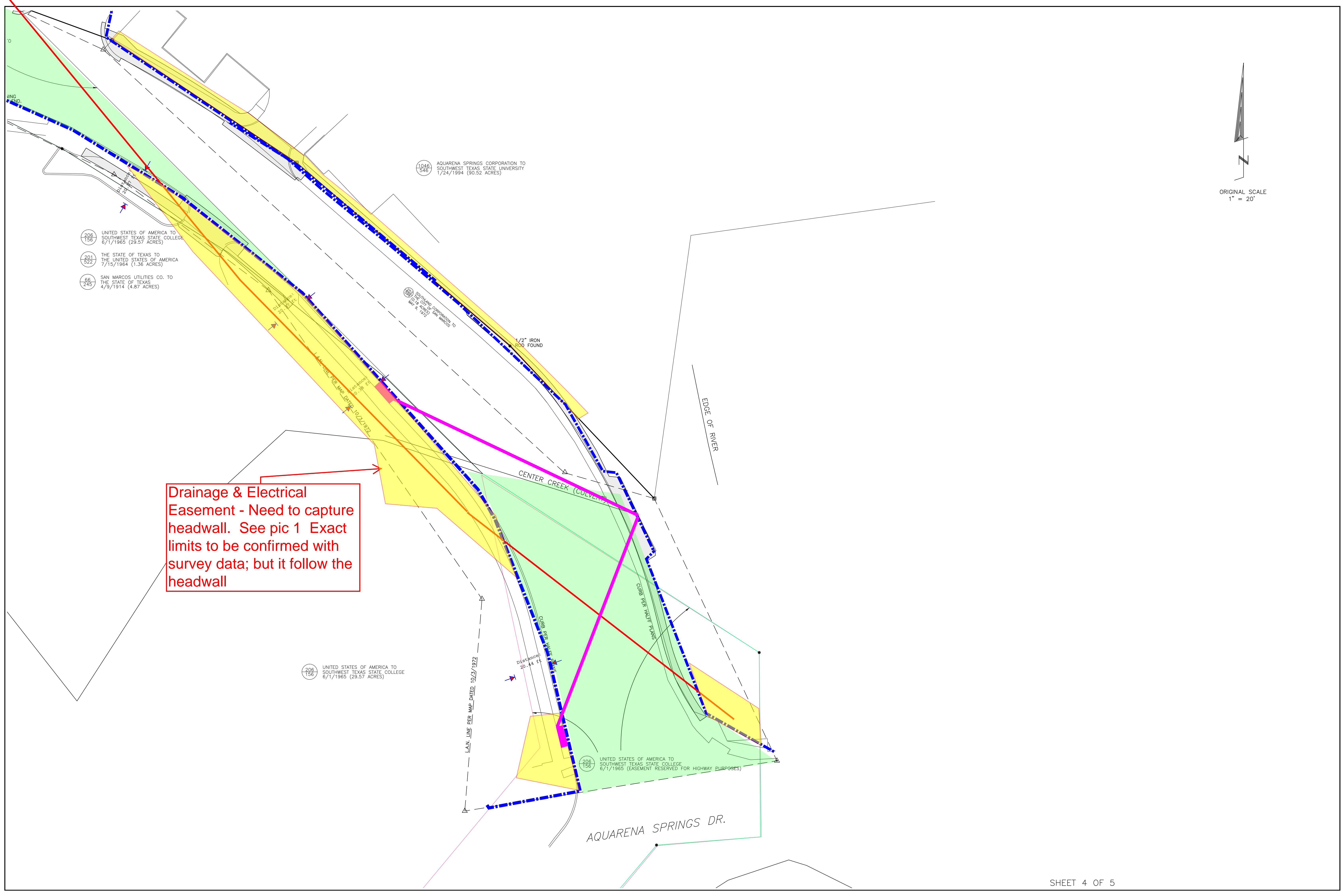
ROW stops at back of curb

Need Sidewalk/Electric Easement
existing sidewalk

Need Sidewalk/Electric/Drainage
Easement 20' from Back of Curb

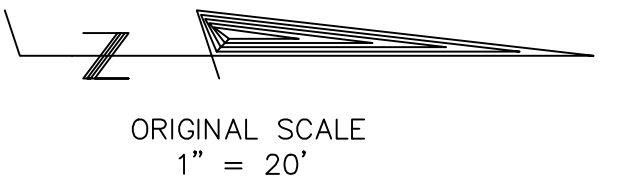
Need Electric Easement
20' from Rock Wall.





ORIGINAL SCALE
1" = 20'

See
sheet 3



Proposed ROW - Back of Existing curb

Pro curl

2 H. A. NELSONS FIRST ADDITION

COSM to obtain drainage easement

COSM to TxST from Back of Curb East

Need Electric Easement 15'

66
245

SAN MARCOS
THE STATE OF
4/9/1914