

 Gi V'YVh'DfcdYfm

 DUFW

9H>



H\j' d'fcXi Vh'g Zcf']bZcfa Uh'cbU' di fdcgYg'UbX'a Umbch\Uj Y
 VYyb' d'fYdUFYX' Zcf' cf' VY' gi]hUV'Y Zcf' Y[U'z'Yb[]bYf]b[z'cf
 gi' fj Ym]b['di fdcgYg' -h'XcYg' bch'fYd'fYgYbh'Ub' cb! h'Y! [fci bX
 gi' fj YmUbX' fYd'fYgYbh'g' cb' m'h'Y' Uddfcl' ja Uh' fY' Uh'j' Y' c'Vh'cb
 cZ' d'fcdYfmVci bXUf]Yg'

8UH.) #&- #&\$&(&

D'Ubb]b['UbX
 8Yj Y'cda YbhGYfj JWg

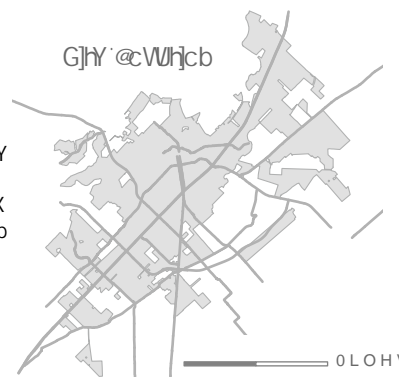
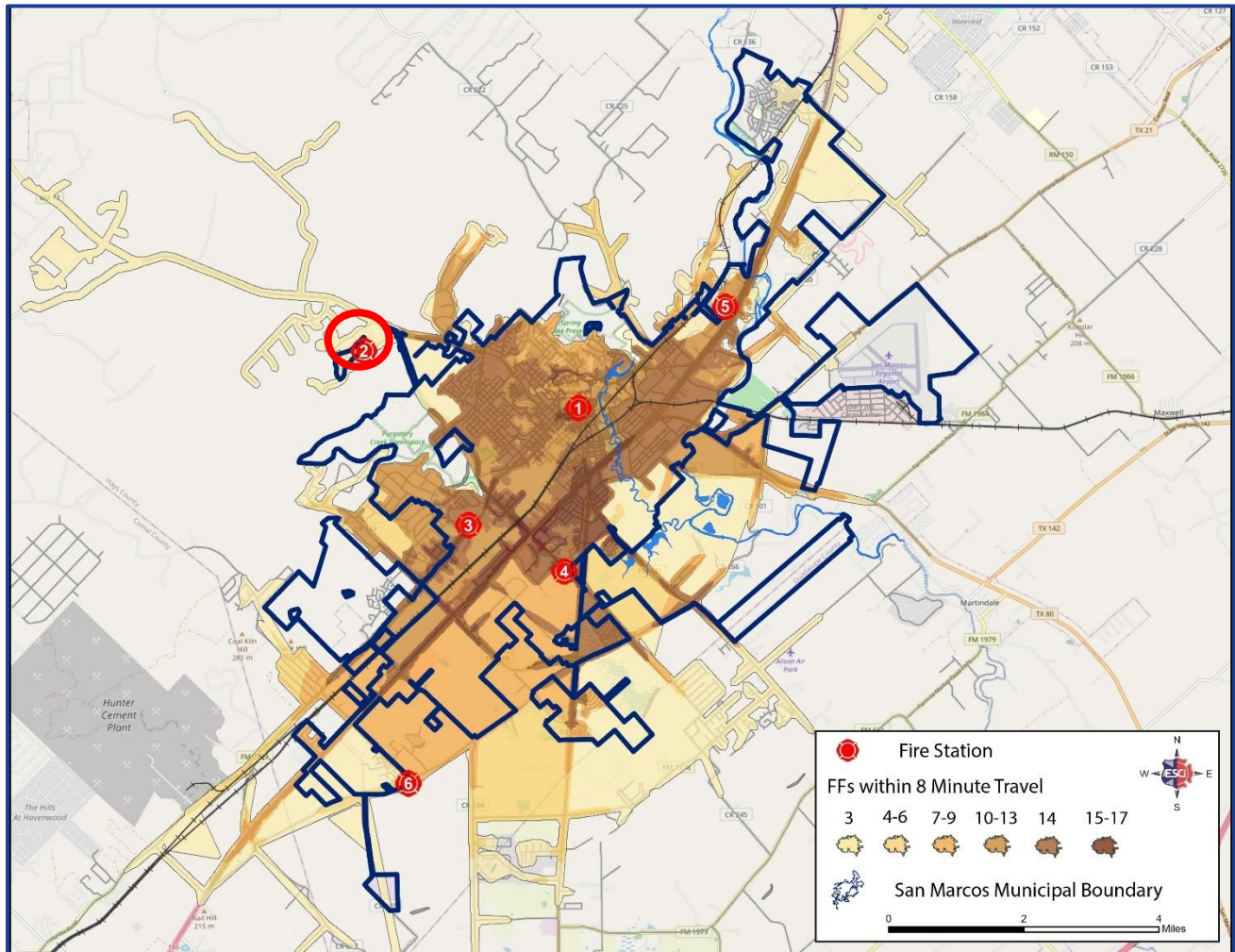


Figure 112: SMFD 8-Minute Effective Response Force
Six fire stations with Station 2 relocated to Centerpoint, and Station 6 at Old Bastrop west of Posey with minimum staffing of 20 personnel.



○ AN-24-04 / ZC-24-05 APPROXIMATE LOCATION