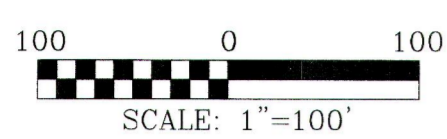


LA CIMA PHASE 1, SECTION 2 FINAL PLAT

LA CIMA PHASE 1, WEST
CENTERPOINT ROAD
DOC. NO. 17036340
O.P.R.H.C.T.X.

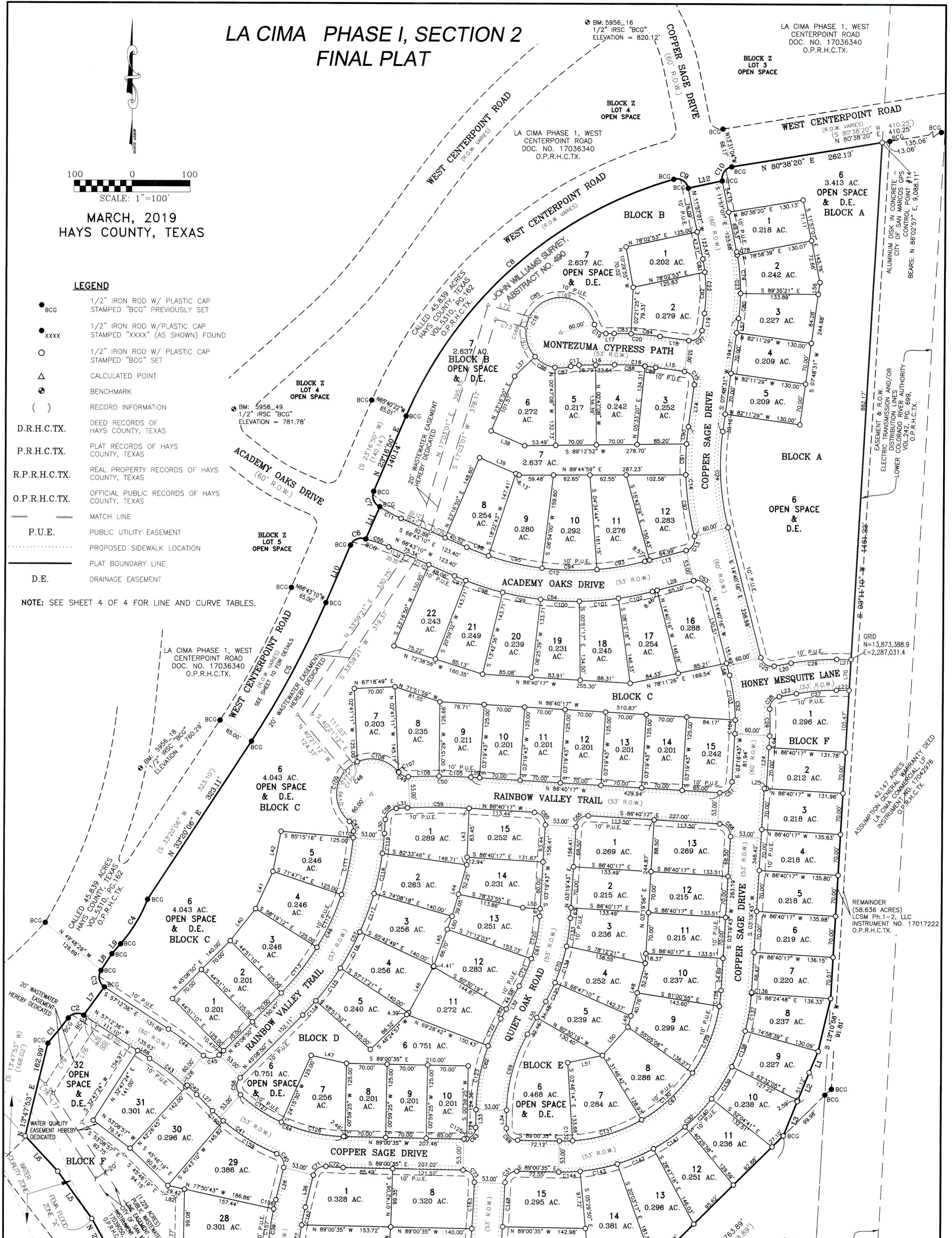


MARCH, 2019
HAYS COUNTY, TEXAS

LEGEND

- BCG 1/2" IRON ROD W/ PLASTIC CAP STAMPED "BCG" PREVIOUSLY SET
- xxxx 1/2" IRON ROD W/ PLASTIC CAP STAMPED "XXXX" (AS SHOWN) FOUND
- 1/2" IRON ROD W/ PLASTIC CAP STAMPED "BCG" SET
- △ CALCULATED POINT
- ⊙ BENCHMARK
- () RECORD INFORMATION
- D.R.H.C.T.X. DEED RECORDS OF HAYS COUNTY, TEXAS
- P.R.H.C.T.X. PLAT RECORDS OF HAYS COUNTY, TEXAS
- R.P.R.H.C.T.X. REAL PROPERTY RECORDS OF HAYS COUNTY, TEXAS
- O.P.R.H.C.T.X. OFFICIAL PUBLIC RECORDS OF HAYS COUNTY, TEXAS
- MATCH LINE
- P.U.E. PUBLIC UTILITY EASEMENT
- PROPOSED SIDEWALK LOCATION
- PLAT BOUNDARY LINE
- D.E. DRAINAGE EASEMENT

NOTE: SEE SHEET 4 OF 4 FOR LINE AND CURVE TABLES.



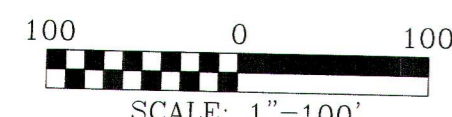
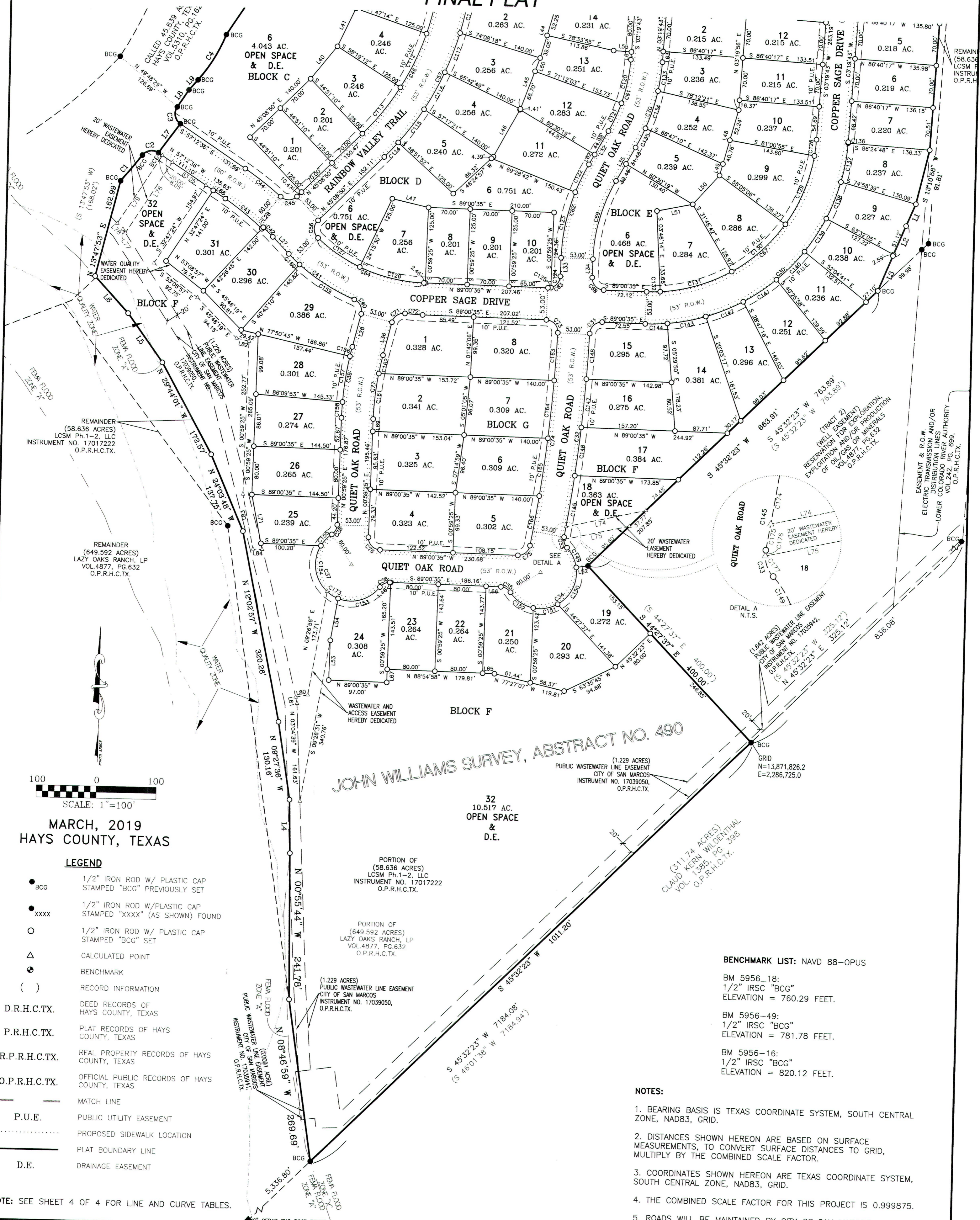
FILE: P:\005956 - Lazy Oaks Ranch\005956-01-002 (SUR) - Freeman Tract\Survey\Working\Final Plat\005956-La Cima Phase 1, Section 2 Final Plat.dwg			
DATE: 04-13-18	DRAWN BY: EN	CREW: CAF, MK	
SCALE: 1"=100'	CHECKED BY: J.D.B.	FB #:	
JOB #: 005956	DRAWING #: PLAT	PLAN #: 1207	
NO.	REVISION	BY	DATE



Bowman Consulting Group, Ltd.
1120 S. Capital of Texas Hwy, Building 3, Suite 220, Austin, TX 78746
Phone: (512) 327-1180 Fax: (512) 327-4062
www.bowmanconsulting.com © Bowman Consulting Group, Ltd.
TBPE Firm No. F-14309 | TBPLS Firm No. 101206-00

FINAL PLAT
LA CIMA
PHASE 1, SECTION 2
JOHN WILLIAMS SURVEY, ABSTRACT 490
HAYS COUNTY, TEXAS

LA CIMA PHASE I, SECTION 2 FINAL PLAT



MARCH, 2019
HAYS COUNTY, TEXAS

LEGEND

- BCG 1/2" IRON ROD W/ PLASTIC CAP STAMPED "BCG" PREVIOUSLY SET
- xxxx 1/2" IRON ROD W/ PLASTIC CAP STAMPED "xxxx" (AS SHOWN) FOUND
- 1/2" IRON ROD W/ PLASTIC CAP STAMPED "BCG" SET
- △ CALCULATED POINT
- BENCHMARK
- () RECORD INFORMATION
- D.R.H.C.TX. DEED RECORDS OF HAYS COUNTY, TEXAS
- P.R.H.C.TX. PLAT RECORDS OF HAYS COUNTY, TEXAS
- R.P.R.H.C.TX. REAL PROPERTY RECORDS OF HAYS COUNTY, TEXAS
- O.P.R.H.C.TX. OFFICIAL PUBLIC RECORDS OF HAYS COUNTY, TEXAS
- MATCH LINE
- P.U.E. PUBLIC UTILITY EASEMENT
- PROPOSED SIDEWALK LOCATION
- PLAT BOUNDARY LINE
- D.E. DRAINAGE EASEMENT

NOTE: SEE SHEET 4 OF 4 FOR LINE AND CURVE TABLES.

JOHN WILLIAMS SURVEY, ABSTRACT NO. 490

PORTION OF (58.636 ACRES)
LCSM Ph.1-2, LLC
INSTRUMENT NO. 17017222
O.P.R.H.C.TX.

PORTION OF (649.592 ACRES)
LAZY OAKS RANCH, LP
VOL. 4877, PG. 632
O.P.R.H.C.TX.

(1.229 ACRES)
PUBLIC WASTEWATER LINE EASEMENT
CITY OF SAN MARCOS
INSTRUMENT NO. 17039050,
O.P.R.H.C.TX.

- BENCHMARK LIST: NAVD 88-OPUS**
- BM 5956-18:
1/2" IRSC "BCG"
ELEVATION = 760.29 FEET.
 - BM 5956-49:
1/2" IRSC "BCG"
ELEVATION = 781.78 FEET.
 - BM 5956-16:
1/2" IRSC "BCG"
ELEVATION = 820.12 FEET.

- NOTES:**
1. BEARING BASIS IS TEXAS COORDINATE SYSTEM, SOUTH CENTRAL ZONE, NAD83, GRID.
 2. DISTANCES SHOWN HEREON ARE BASED ON SURFACE MEASUREMENTS, TO CONVERT SURFACE DISTANCES TO GRID, MULTIPLY BY THE COMBINED SCALE FACTOR.
 3. COORDINATES SHOWN HEREON ARE TEXAS COORDINATE SYSTEM, SOUTH CENTRAL ZONE, NAD83, GRID.
 4. THE COMBINED SCALE FACTOR FOR THIS PROJECT IS 0.999875.
 5. ROADS WILL BE MAINTAINED BY CITY OF SAN MARCOS AFTER FINAL APPROVAL AND ACCEPTANCE.

FILE: P:\005956 - Lazy Oaks Ranch\005956-01-002 (SUR) - Freeman Tract\Survey\Working\Final Plat\005956_La Cima Phase 1, Section 2 Final Plat.dwg		
DATE: 04-13-18	DRAWN BY: EN	CREW: CAF, MK
SCALE: 1"=100'	CHECKED BY: J.D.B.	FB #:
JOB #: 005956	DRAWING #: PLAT	PLAN #: 1207
NO.	REVISION	BY DATE



Bowman Consulting Group, Ltd.
1120 S. Capital of Texas Hwy, Building 3, Suite 220, Austin, TX 78746
Phone: (512) 327-1180 Fax: (512) 327-4062
www.bowmanconsulting.com Bowman Consulting Group, Ltd.
TBPE Firm No. F-14309 | TBPLS Firm No. 101206-00

FINAL PLAT
LA CIMA
PHASE 1, SECTION 2
JOHN WILLIAMS SURVEY, ABSTRACT 490
HAYS COUNTY, TEXAS

