

Downtown Reconstruction Drainage

City Council Meeting

July 7, 2015

Background:

- Storm water is entering businesses along east side of N. LBJ during intense rainfall events.
- Condition existed prior to Downtown Construction Project.
- Why is it still occurring and what can be done to address the problem?

Initial Project Drainage Area:



Phase 1 Drainage Area & Completed Storm Sewer:



Videos of Area during rain

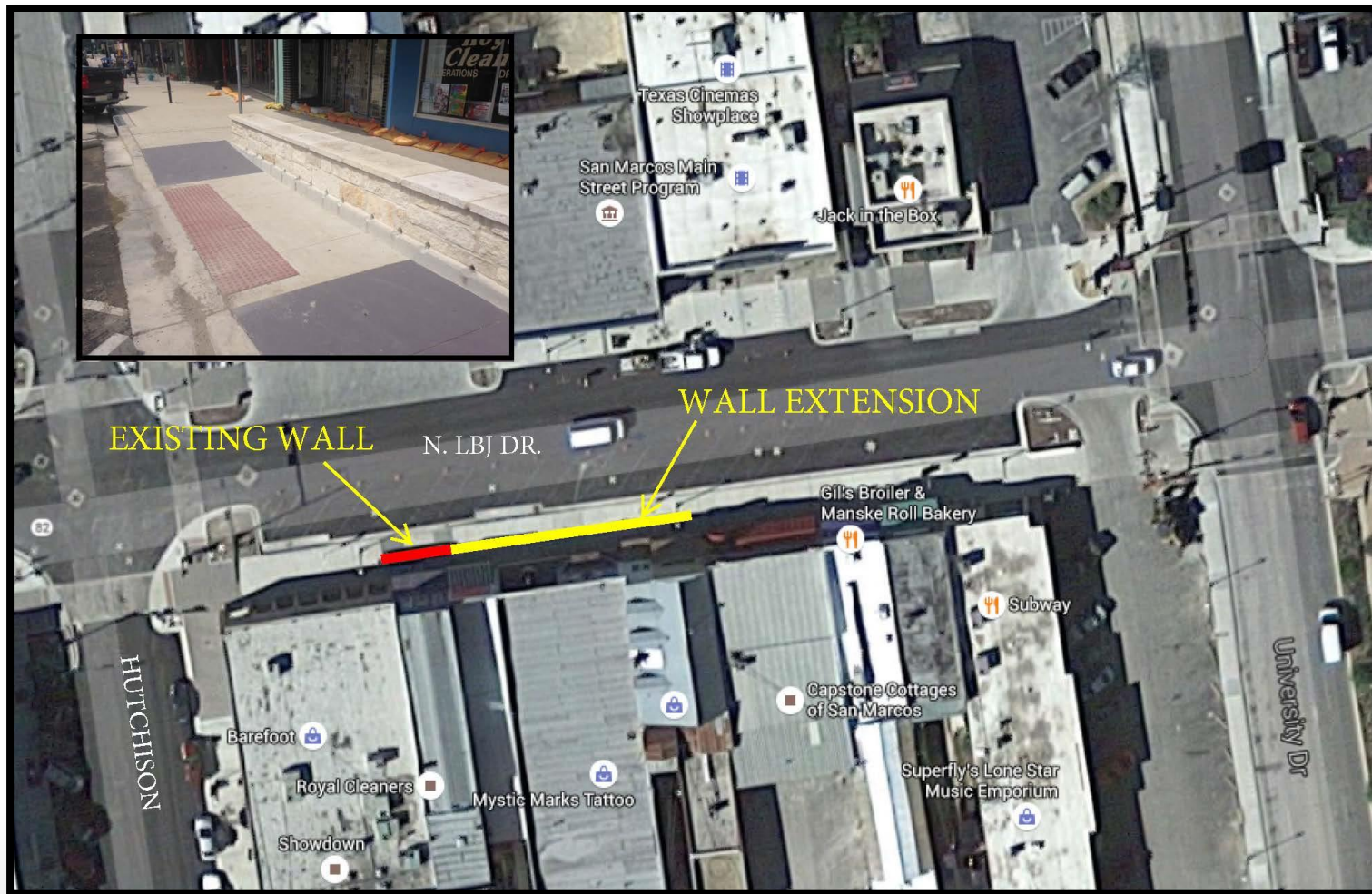
events:

ALTERNATIVES:

- Additional Curb Inlets on N. LBJ Drive (Hutchison to University) - **Rejected**
- Additional Curb Inlets at Intersection of University and N. LBJ Drive - **Rejected**
- Seat Wall Extension – **Limitations but could provide short term protection.**
- Install University Segment of Storm Drain (with Additional Inlet Capacity) – **Viable option**
- Install Remaining Drainage (University, Guadalupe, Pat Garrison, Fredericksburg, and Hutchison) – **Viable option**

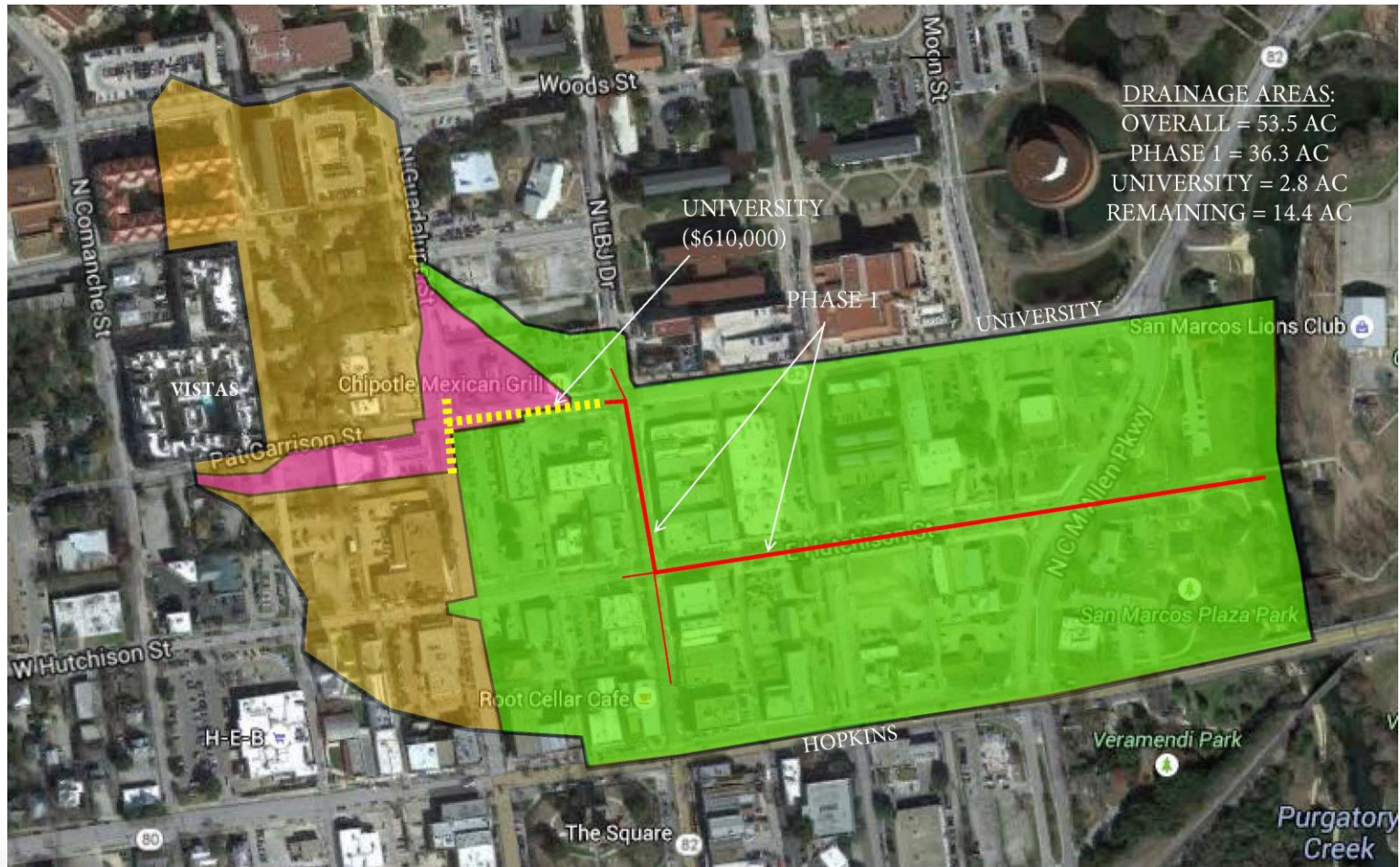
Alternatives:

Seat Wall Extension



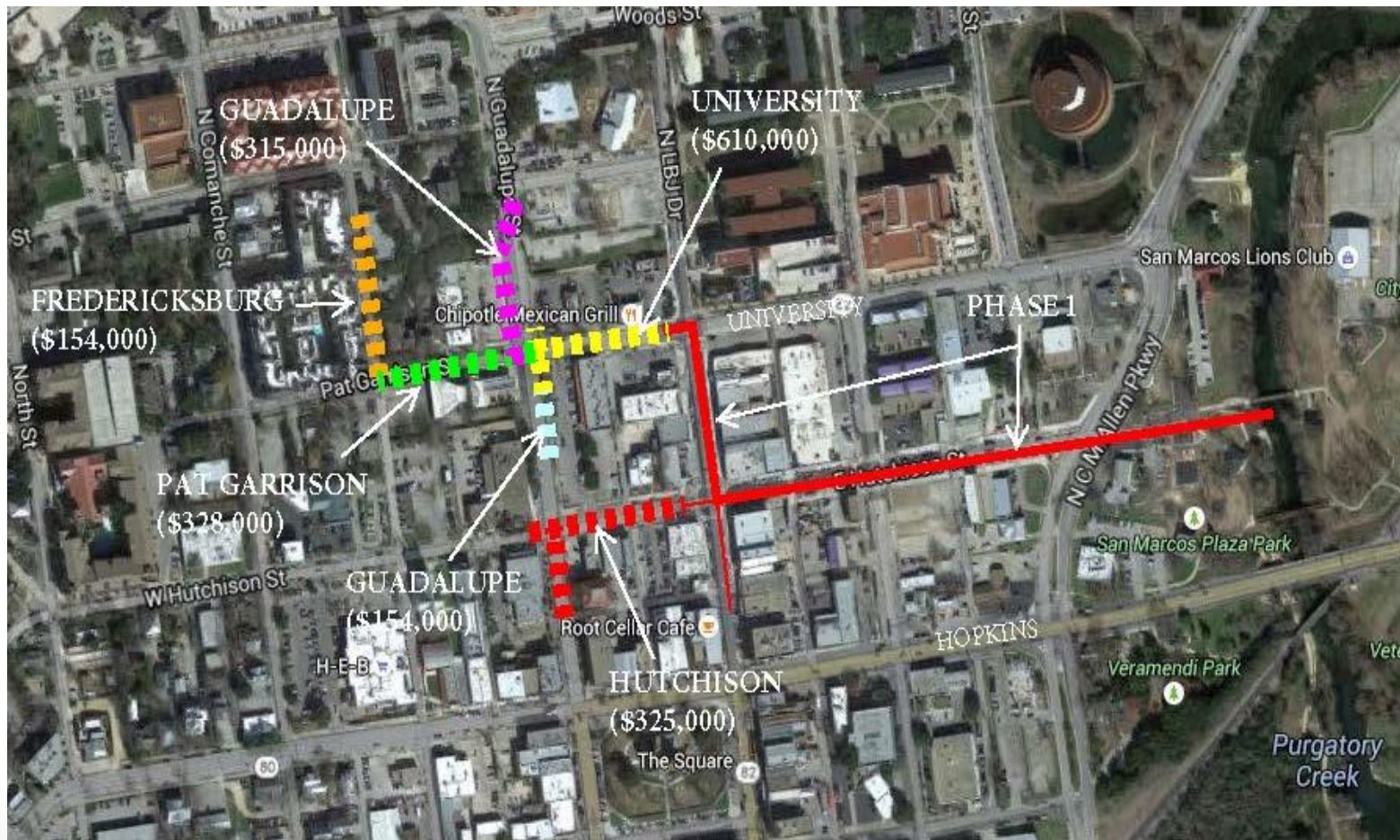
Alternatives:

Install University Segment of Storm Drain



Alternatives:

Install Remaining Storm Drainage



Alternatives Matrix:

Alternative	Advantages	Disadvantages	Cost
Seat Wall	Low cost Quick Interim	Effectiveness Inconvenient ADA/utility access	\$12,000
University Storm Drainage Segment	Improved runoff capture Potential chg ordr Short construction Limited conflicts	Cost Future phases	\$610K - \$750K
Complete Remaining Storm Drainage Project	Drainage project fully constructed	Cost Design update req'd Construction time Future conflicts	\$2 million

Recommendation:

- University segment construction.
- Completely close block to traffic for easiest construction.
- Change Order into existing construction contract for quickest start.
- Fund with 2015 debt issuance.