

TEXAS LOCAL GOVERNMENT PURCHASING COOPERATIVE

BUYBOARD

PRODUCT PRICING BASED ON CONTRACT

Customer: City of san Marcos

Product Description: F750

A: Base Price in Bid/Proposal Number 491-15 \$ 133,764.00

B: Published Options [Itemize each item below]

	\$ -		\$ -
	\$ -		
	\$ -		
	\$ -		
	\$ -		
	\$ -		
	\$ -		
	\$ -		
	\$ -		
	\$ -		
	\$ -		

Subtotal Column 1: \$ -

Subtotal Column 2: \$ -

Published Options added to Base Price (Subtotal of "Col 1" + "Col 2") \$ -

C: Subtotal of A + B => \$ 133,764.00

D: UnPublished Options %

delete water body add dump	\$ (56,797.00)		\$ -
	\$ -		\$ -
			\$ -
			\$ -
			\$ -

Subtotal Column 1: \$ (56,797.00)

Subtotal Column 2: \$ -

Body \$ (56,797.00)

E: Contract Pride Adjustment {If any, explain here} \$ - \$ -

F: Total of C + D ± E {Not including Buy Board Fee} => \$ 76,967.00

G: Quantity Ordered {Units x F} => # of Units 1 \$ 76,967.00

H: BUYBOARD Fee {From Fee Schedules, Table: } => @ % \$ 600.00

I: Non-Equipment Charges & Credits {ie: Ext. Warranty, Trade-In, Cost of Factory trips, etc.}

	\$ -
	\$ -

Subtotal of Non-Equipment Charges \$ -

J: TOTAL PURCHASE PRICE INCLUDING {G + H + I} => \$ 77,567.00

Grande Truck Center
PO Box 201210
San Antonio, Texas 78220

Rocky Shoffstall
PH 210-666-7112
FX 210-666-7216
800-779-7672 X112

Grande Truck Confidential

1/5/2016

Page 1



Quote WTTLLC00006536 Page 1 of 2 Date 1/5/2016

Warren Truck and Trailer, LLC
15768 US HIGHWAY 271 NORTH
Talco TX 75487

Phone (888) 734-4400
Fax (903) 379-4400
WarrenTruckAndTrailer.com

Bill To	Ship To	Contact
GRANDE TRUCK CENTER P.O. BOX 201210 SAN ANTONIO TX 78220-8210	GRANDE TRUCK CENTER 4562 IH-10 EAST SAN ANTONIO TX 78219-4205	(210) 661-4121 Ext. 0000

Purchase Order No.		Customer ID	Salesperson ID	Shipping Method	Payment Terms	Req Ship Date	Master No.
		GRA219	MACK	DELIVERED	Net30	0/0/0000	10,010,808
QTY	Item Number	Description			UOM	Unit Price	Ext. Price
1	F-10	DUMP BODY - FRAME TYPE - 10' c/o SAN MARCOS Yardage: 7/8 Floor Material: 3/16 A1011 Front / Material: 38" 10 GA A1011 Side / Material: 32" 10 GA A1011 Vertical Side Brace: Yes Horizontal Brace: No Hoist / Cylinder: T10-5385 Hydraulics: Yes			EA		
1	TAILGATE	Air Operated: Yes Panel: 3 Vertical Material: 10 GA A1011 Height: 38 Slope: None Chains: 5/16" Double Acting: Yes			Each	\$0.00	\$0.00
1	DB OPTIONS # 1	Cabshield: Full Width-1/2 (24") Asphalt Apron: None Body Lights: LED Yes			Each	\$0.00	\$0.00
1	INSTALL	Hydraulic Hoses/Fittings: Yes Pump: Muncie for Ford Auto Console: Air/Air Conspicuity Tape: No Mudflaps and Brackets: Yes Side Boards: Formed Metal -2x6x3/16 Delivery Fuel/Charges: Yes			Each	\$0.00	\$0.00
1	PAINT	WARREN STOCK COLOR			Each	\$0.00	\$0.00
1	PTO	POWER TAKE OFF PTO Muncie CS Series FOR FORD AUTO			EA	\$0.00	\$0.00
1	TARP SYSTEM	TARP system - installed Donovan "BULLET" Electric Cab Operated HD, Bent, Aluminum Side Arms Tarp Size: 84" x 17' Tarp Type: Mesh Side Flaps: No			EA	\$0.00	\$0.00



Quote WTTLLC00006536

Page 2 of 2
Date 1/5/2016

Warren Truck and Trailer, LLC
15768 US HIGHWAY 271 NORTH
Talco TX 75487

Phone (888) 734-4400
Fax (903) 379-4400
WarrenTruckAndTrailer.com

Purchase Order No.		Customer ID	Salesperson ID	Shipping Method	Payment Terms	Req Ship Date	Master No.	
		GRA219	MACK	DELIVERED	Net30	0/0/0000	10,010,808	
QTY	Item Number	Description				UOM	Unit Price	Ext. Price
1	TOW PACKAGE	Pintle Plate: 3/4" Pintle Hitch: 20 Ton Glad Hands: Yes D Rings: Yes Tow Hooks: No Electric Plug: 7 Way & 6 Way Electric Brake Control Yes				Each	\$0.00	\$0.00
1	DELIVERY	FIRE EXTINGUISHER, SAFETY TRIANGLES, STATE INSPECTION, & DELIVERY OF COMPLETED UNIT TO c/o SAN MARCOS DELIVERY CHARGES SHOWN IN SHIPPING COLUMN BELOW				Each	\$0.00	\$0.00

Quotation reviewed and accepted by:
(signed) _____
Please fax back to us for entry as an order
NOTE: Quotation good for 10 days only

Subtotal
Misc
Tax
Ship & Handling
Trade In Allowance
Total



Grande Truck Center
4562 IH 10 East, San Antonio, Texas, 78219
Office: 210-661-4121 Fax: 210-666-7211

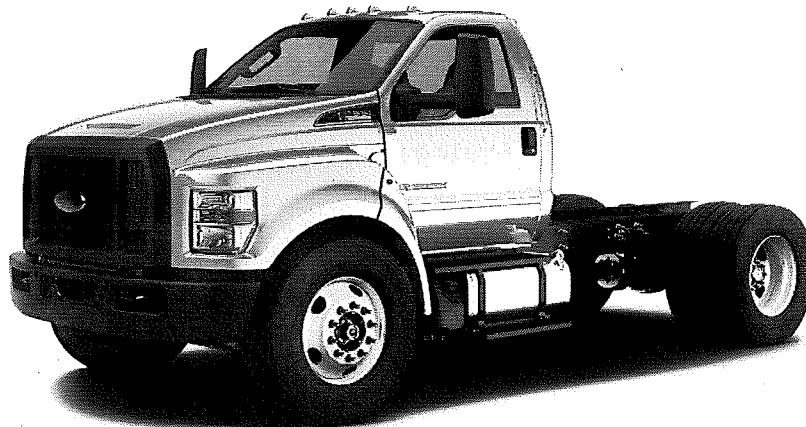
Customer Proposal

Prepared by:

ROCKY SHOFFSTALL
Office: 210-661-4121
Email: rshoffstall@grandetruck.com

Date: 01/05/2016

Vehicle: 2016 F-750 Diesel Base
Regular Cab





Re: Vehicle Proposal

Dear ,

Thank you very much for your interest in acquiring a vehicle from our dealership. We concur that your interest is well deserved. We hope that an outstanding product lineup and our dedication to customer service will enhance your ownership experience should you decide to buy a vehicle from us.

Attached, please find additional information that I hope will assist you in making a more informed decision. Please feel free to contact me at any time as I would truly appreciate the opportunity to be of service to you.

Sincerely,

ROCKY SHOFFSTALL

rshoffstall@grandetruck.com



Selected Options

Code	Description
Base Vehicle	
F7D	Base Vehicle Price (F7D)
Engines	
99E	6.7L Power Stroke V8 Turbo Diesel - 300 HP @ 2500 RPM, 700 lb-ft Torque @ 1800 RPM Includes Engine Exhaust Brake and manual regen capability. Torque: 700 ft.lbs. @ 1800 rpm. <i>Governed RPM: 3300. Includes CARB clean idle label - may be removed if un-necessary.</i>
41H	Engine Block Heater, Phillips, 120 Volt/750 Watt
Transmissions	
44G	Ford TorqShift HD 6-Speed Automatic - Double Overdrive, less PTO Provision <i>(RNDM).</i>
41A	Transmission Power Take-Off Provision w/LiveDrive Capability
Front Wheels & Tires	
643	Wheels, Front 22.5x8.25 White Powder Coated Steel, 10-Hole <i>(285.75MM BC) hub piloted, flanged nut, metric mount, 8.25 DC rims; with steel hubs.</i>
TCT	Tires, Front Two 11R22.5G Goodyear G661 HSA (496 rev/mile)
Rear Wheels & Tires	
663	Wheels, Rear 22.5x8.25 White Powder Coated Steel, 10-Hole <i>(285.75MM BC) hub piloted, flanged nut, metric mount, 8.25 DC rims; with steel hubs.</i>
RCA	Tires, Rear Four 11R22.5G Goodyear G182 RSD (496 rev/mile)
Brakes	
67C	Air Brakes - Straight Truck <i>Meritor Q-Plus with ABS, Bendix Anti-Lock Brake System, 4-channel. Includes 15" x 4" front brakes, dual direct reading air pressure gauges, brake lines color coded nylon, Bendix 13.2 CFM capacity air compressor, instrument panel mounted yellow knob parking brake control valve, automatic slack adjusters front and rear, two rear spring parking air brake chambers mounted on front of rear axle, three drain valves and two air tanks (Reference Body Builders Book for location). Rear brake size and components dependent upon axle selection.</i>
62D	Air Dryer, Bendix AD/IP w/Heater <i>Mounted left frame rail.</i>
158	Trailer Air Brake Package <i>Includes air lines to rear of frame, hand control valve and tractor protection valve.</i>
159	Trailer Connection Socket - 7-Way, Wired for Turn Signals Combined with Stop

Prices and content availability as shown are subject to change and should be treated as estimates only. Actual base vehicle, package and option pricing may vary from this estimate because of special local pricing, availability or pricing adjustments not reflected in the dealer's computer system. See salesperson for the most current information.



Selected Options (cont'd)

Code	Description
<i>Mounted at rear of frame, wired for turn signals combined with stop (compatible with trailers that use combined stop, tail, turn lights).</i>	
Front Axle and Suspension	
43P	12,000 lb. Cap. Non-Driving - Dana E-1202I - I-Beam Type
61D	Taper-Leaf Springs, Parabolic - 12,000 lb. Cap 2-leaf, 62" x 3.15"
15S	Front Stabilizer Bar
60A	Lube, Front Axle, EmGard 50W, Synthetic Oil
Rear Axle and Suspension	
475	21,000 lb. Single Reduction - Open <i>NOTE: When specifying an axle ratio, check performance guidelines for startability and gradeability.</i>
52P	Driveshaft Upgrade
68R	Multi-Leaf Springs - 23,000 lb. Cap 11-leaf. Includes 2,000 lb auxiliary springs for load stabilization.
961	Shock Absorbers, Rear - Double Acting
607	Lube, Rear Axle, EmGard 75W-90, Synthetic Oil
X6D	6.50 Axle Ratio
Wheelbase	
158WB	158" Wheelbase/84" CA/49" AF/246" OAL
Frame	
536	Single Channel - Straight 'C' 14.18 SM, 120,000 PSI 1,701,600 RBM. Heat treated alloy steel; 10.125" x 3.580" x 0.312" (257.2mm x 90.9mm x 8.0mm).
Exhaust	
91G	Under Cab, Right Side Outlet, Switchback-Style <i>Single, horizontal muffler, right side, under cab, outside of frame rail with rear discharge.</i>
Fuel Tanks	
65B	Fuel Tank - LH 50 Gallon Rectangular - Aluminum
10	10 Gal. Single Tank Fuel Fill. Mandatory Charge Applied, Based On Tank Selection
Electrical / Alternator / Battery	
17A	200 Amp Denso SC5 Heavy Duty Alternator <i>Extra heavy duty 12 Volt.</i>
55M	Jump Start Stud - Remote Mounted
63B	Battery - Two 900 CCA, 1800 Total, Includes Steel Battery Box <i>12Volt, Motorcraft.</i>
17M	Back-Up Alarm - Electric, 102 dBA
16V	Voltmeter <i>Available in message center.</i>

Prices and content availability as shown are subject to change and should be treated as estimates only. Actual base vehicle, package and option pricing may vary from this estimate because of special local pricing, availability or pricing adjustments not reflected in the dealer's computer system. See salesperson for the most current information.



Selected Options (cont'd)

Code	Description
Seats	
88G	30/70 Air Ride Driver (External Air Source) & Fixed 2-Passenger Bench - Vinyl
Cab Interior	
600A	Preferred Equipment Package 600A
588	Radio AM/FM Stereo w/Aux Audio Input Jack & Clock <i>With two speakers.</i>
Cab Exterior	
59A	Horn, Air - Black, Single Trumpet <i>Air solenoid operated, chassis mounted on rail back of bumper.</i>
54C	Mirrors, Dual - Heated Rectangular, XL2020 - 102" Width <i>Integral spot mirror, sail type, manual fold, solid black finish.</i>
Ship-Thru	
21A	Pre-Delivery Inspection Selection requires that you also choose either (314) or (31F) or (31V) to have the Inspection performed.
314	Ship-Thru - Manning MAY be selected w/o adding (21A). For MODIFICATIONS ONLY, Dealer must make arrangements directly with Manning (please use CVT Resources for add. Info).
Miscellaneous	
PAINT	Paint Type - Environmentally Friendly, "3 - Wet System"
Interior Colors	
E	Gray
Primary Colors	
YZ	Oxford White

Prices and content availability as shown are subject to change and should be treated as estimates only. Actual base vehicle, package and option pricing may vary from this estimate because of special local pricing, availability or pricing adjustments not reflected in the dealer's computer system. See salesperson for the most current information.



Selected Equipment & Specs

Dimensions

Exterior length: 246.0" * Exterior width: 96.7" * Exterior height: 94.3" * Wheelbase: 158.0" * Front track: 83.5" * Rear track: 72.7" * Front legroom: 41.4" * Front headroom: 40.7" * Front hiproom: 67.6" * Front shoulder room: 68.0"

Powertrain

300hp 6.7L OHV 32 valve intercooled turbo V-8 engine with direct diesel injection * Recommended fuel : diesel * federal * 6 speed automatic transmission with overdrive * Rear-wheel drive * Fuel Economy Cty: N/A * Fuel Economy Highway: N/A * 50.0 gal. rectangular Left front fuel tank * Fuel/water separator * Transmission PTO provision * Standard rear differential * Right mounted horizontal muffler * Right mounted horizontal tailpipe

Suspension/Handling

Front non-independent leaf spring suspension with anti-roll bar * Rear rigid axle leaf spring suspension with regular shocks * Hydraulic power-assist re-circulating ball Steering * Front and rear 22.5 x 8.25 wheels * 11.0R22.5 AS front and rear tires * Dual rear wheels * Rubber auxiliary rear springs

Body Exterior

2 doors * Driver and passenger heated folding door mirrors * Black door mirrors * Black bumpers * Side steps * Trailer harness * Clearcoat paint * Straight front bumper ends * Hood mounted grille * Front and rear 22.5 x 8.25 white steel wheels with 10 wheel studs

Convenience

Manual air conditioning * Cruise control with steering wheel controls * Manual front windows * Manual door locks * Manual tilt steering wheel * Front cupholders * Passenger visor mirror * Single air horn * Automatic gearshift steering column lever * Driver and passenger door bins

Seats and Trim

Seating capacity of 3 * Fixed driver seat * Fixed passenger seat * Bucket driver seat, two person bench passenger seat * Driver seat folding back * Low back seats * Driver seat air suspension * Driver seat with 4 way direction control, passenger seat with 2 way direction control * Manual fore/aft seats

Entertainment Features

AM/FM stereo radio * Auxiliary audio input * 4 speakers * Fixed antenna

Lighting, Visibility and Instrumentation

Halogen aero-composite headlights * Variable intermittent front windshield wipers * Light tinted windows * Front reading lights * Tachometer * Voltmeter * Oil pressure gauge * Trip computer * Trip odometer

Safety and Security

4-wheel ABS brakes * Air brakes * Manual door locks

Dimensions

General Weights

Curb	11925 lbs.	Front curb weight	7130 lbs.
Rear curb weight	4795 lbs.	Front axle capacity	12000 lbs.
Rear axle capacity	21000 lbs.	Front spring rating	12000 lbs.
Rear spring rating	23000 lbs.	Front tire/wheel capacity	12350 lbs.
Rear tire/wheel capacity	23360 lbs.	Front GAWR	12000 lbs.
Rear GAWR	21000 lbs.	GVWR	33000 lbs.
GCWR	50000 lbs.		

Trailer Type

Harness Yes

Fuel Tank type

Capacity 50 gal.

Prices and content availability as shown are subject to change and should be treated as estimates only. Actual base vehicle, package and option pricing may vary from this estimate because of special local pricing, availability or pricing adjustments not reflected in the dealer's computer system. See salesperson for the most current information.



Selected Equipment & Specs (cont'd)

Front Frame

Height loaded 35 " Height unloaded 37 "

Rear Frame

Height loaded 37 " Height unloaded 38 "

Powertrain

Engine Type

Block material	Iron	Cylinders	V-8
Head material	Aluminum	Ignition	Compression
Injection	Direct diesel injection	Liters	6.7L
Orientation	Longitudinal	Recommended fuel	Diesel
Valves per cylinder	4	Valvetrain	OHV
Forced induction	Intercooled turbo		

Engine Spec

Bore	3.90"	Compression ratio	16.2:1
Displacement	406 cu.in.	Stroke	4.25"

Engine Power

Output	300 HP @ 2,500 RPM	Torque	700 ft.-lb @ 1,800 RPM
Governed RPM	3300		

Alternator

Type	HD	Amps	200
------	----	------	-----

Battery

Cold cranking amps	1800	Location	Forward right
Step	Yes	Type	Dual

Engine Extras

Block heater	Yes
--------------	-----

Transmission

Electronic control	Yes	Lock-up	Yes
Overdrive	Yes	Speed	6
Type	Automatic		

Transmission Gear Ratios

1st	3.974	2nd	2.318
3rd	1.516	4th	1.149
5th	0.858	6th	0.674
Reverse Gear ratios	3.128		

Transmission Torque Converter

Stall ratio	1.85
-------------	------

Transmission Extras

Driver selectable mode	Yes	Sequential shift control	Yes
Oil cooler	Regular	PTO provision	Yes

Drive Type

Type	Rear-wheel
------	------------

Drive Axle

Ratio	6.5
-------	-----

Exhaust

Prices and content availability as shown are subject to change and should be treated as estimates only. Actual base vehicle, package and option pricing may vary from this estimate because of special local pricing, availability or pricing adjustments not reflected in the dealer's computer system. See salesperson for the most current information.



Selected Equipment & Specs (cont'd)

Material	Aluminized steel	System type	Single
<i>Emissions</i>			
CARB	Federal		
<i>Engine Retarder</i>			
Type	Yes		

Driveability

<i>Brakes</i>			
ABS	4-wheel	ABS channels	4
Type	Air brakes		
<i>Suspension Control</i>			
Ride	Regular		
<i>Front Suspension</i>			
Independence	Non-independent	Type	Leaf
Anti-roll bar	Regular		
<i>Front Spring</i>			
Type	Tapered leaf	Grade	Regular
<i>Front Shocks</i>			
Type	Regular		
<i>Rear Suspension</i>			
Independence	Rigid axle	Type	Leaf
<i>Rear Spring</i>			
Type	Multi-leaf	Grade	Regular
Auxiliary	Rubber		
<i>Rear Shocks</i>			
Type	Regular		
<i>Steering</i>			
Activation	Hydraulic power-assist	Type	Re-circulating ball
<i>Steering Specs</i>			
# of wheels	2		

Exterior

<i>Front Wheels</i>			
Diameter	22.5"	Width	8.25"
<i>Rear Wheels</i>			
Diameter	22.5"	Width	8.25"
Dual	Yes		
<i>Front Tires</i>			
Aspect	82	Diameter	22.5"
Sidewalls	BSW	Tread	AS
Width	11.0"	LT load rating	G
RPM	496		
<i>Rear Tires</i>			
Aspect	82	Diameter	22.5"

Prices and content availability as shown are subject to change and should be treated as estimates only. Actual base vehicle, package and option pricing may vary from this estimate because of special local pricing, availability or pricing adjustments not reflected in the dealer's computer system. See salesperson for the most current information.



Selected Equipment & Specs (cont'd)

Sidewalls	BSW	Tread	AS
Width	11.0"	LT load rating	G
RPM	496		

Wheels

Front track	83.5"	Rear track	72.7"
Turning radius (to curb)	22'	Turning radius (to bumper)	23'
Wheelbase	158.0"		

Body Features

Front splash guards	Yes	Body material	Composite/galvanized steel
Side steps	Yes		

Body Doors

Door count	2
------------	---

Exterior Dimensions

Length	246.0"	Body width	96.7"
Body height	94.3"	Cab to axle	84.0"
Axle to end of frame	49.0"	Frame section modulus	14.2cu.in.
Frame yield strength (psi)	120000.0	Frame rail depth	10.1"
Frame rail width	3.6"	Frame rail thickness	0.3"
Max RBM (in.-lbs.)	1780800.0	Frame rail section	9.5"
Front bumper to Front axle	39.0"	Nominal RBM (in.-lbs.)	1701600.0

Seating

Passenger Capacity

Capacity	3
----------	---

Driver Seat

Type	Bucket	Back	Folding
Back type	Low	Suspension	Air
Way direction control	4	Fore/aft	Manual

Passenger Seat

Type	Two person bench	Back type	Low
Way direction control	2	Fore/aft	Manual

Front Seat Trim

Material	Vinyl	Back material	Carpet
----------	-------	---------------	--------

Convenience

AC And Heat Type

Air conditioning	Manual
------------------	--------

Audio System

Auxiliary audio input	Yes	Radio	AM/FM stereo
Radio grade	Regular	Seek-scan	Yes

Audio Speakers

Speaker type	Regular	Speakers	4
--------------	---------	----------	---

Audio Antenna

Type	Fixed
------	-------

Cruise Control

Cruise control	With steering wheel controls
----------------	------------------------------

Prices and content availability as shown are subject to change and should be treated as estimates only. Actual base vehicle, package and option pricing may vary from this estimate because of special local pricing, availability or pricing adjustments not reflected in the dealer's computer system. See salesperson for the most current information.



Selected Equipment & Specs (cont'd)

Convenience Features

12V DC power outlet	2	Back-up alarm	Yes
Horn	Single air		

Door Lock Activation

Type	Manual
------	--------

Instrumentation Type

Display	Analog
---------	--------

Instrumentation Gauges

Tachometer	Yes	Oil pressure	Yes
Engine temperature	Yes	Voltmeter	Yes
Transmission fluid temp	Yes	Engine hour meter	Yes
Primary air pressure	Yes		

Instrumentation Warnings

Battery	Yes	Lights on	Yes
Key	Yes	Service interval	Yes
Brake fluid	Yes	Transmission fluid temp	Yes

Instrumentation Displays

Clock	In-radio display
-------	------------------

Instrumentation Feature

PRND in IP	Yes	Trip computer	Yes
Trip odometer	Yes		

Steering Wheel Type

Material	Urethane	Tilting	Manual
----------	----------	---------	--------

Front Side Windows

Window 1st row activation	Manual
---------------------------	--------

Window Features

Tinted	Light
--------	-------

Front Windshield

Wiper	Variable intermittent
-------	-----------------------

Rear Windshield

Window	Fixed
--------	-------

Automatic Gearshift

Location	Steering column lever
----------	-----------------------

Interior

Passenger Visor

Mirror	Yes
--------	-----

Headliner

Coverage	Full	Material	Cloth
----------	------	----------	-------

Floor Trim

Coverage	Full	Covering	Vinyl/rubber
----------	------	----------	--------------

Trim Feature

Gear shift knob	Urethane
-----------------	----------

Prices and content availability as shown are subject to change and should be treated as estimates only. Actual base vehicle, package and option pricing may vary from this estimate because of special local pricing, availability or pricing adjustments not reflected in the dealer's computer system. See salesperson for the most current information.



Selected Equipment & Specs (cont'd)

Lighting

Dome light type	Delay	Front reading	Yes
Variable IP lighting	Yes		

Storage

Driver door bin	Yes	Front Beverage holder(s)	Yes
Glove box	Yes	Passenger door bin	Yes
Dashboard	Yes		

Legroom

Front	41.4"
-------	-------

Headroom

Front	40.7"
-------	-------

Hip Room

Front	67.6"
-------	-------

Shoulder Room

Front	68.0"
-------	-------



Warranty - Standard Equipment & Specs

Warranty

Basic

Distance	Unlimited miles	Months	24 months
----------	-----------------	--------	-----------

Powertrain

Distance	Unlimited miles	Months	24 months
----------	-----------------	--------	-----------

Corrosion Perforation

Distance	Unlimited miles	Months	60 months
----------	-----------------	--------	-----------

Roadside Assistance

Distance	Unlimited miles	Months	24 months
----------	-----------------	--------	-----------

Diesel Engine

Distance	250000 miles	Months	60 months
----------	--------------	--------	-----------

Transmission

Distance	250000 miles	Months	60 months
----------	--------------	--------	-----------



Pricing - Single Vehicle

Vehicle Pricing

Vehicle Price
Options & Colors
Upfitting
Destination Charge

Total

Customer Signature

Acceptance Date

Prices and content availability as shown are subject to change and should be treated as estimates only. Actual base vehicle, package and option pricing may vary from this estimate because of special local pricing, availability or pricing adjustments not reflected in the dealer's computer system. See salesperson for the most current information.