




# SESSOM DRIVE BIKE/PEDESTRIAN AND PEQUES INTERSECTION IMPROVEMENTS PROJECT

LAURIE MOYER, P.E., DIRECTOR  
SHAUN CONDOR, P.E., PROJECT  
MANAGER  
DESIGN ENGINEER, HALFF  
ASSOCIATES  
MAY 19, 2015



# PROJECT UPDATE

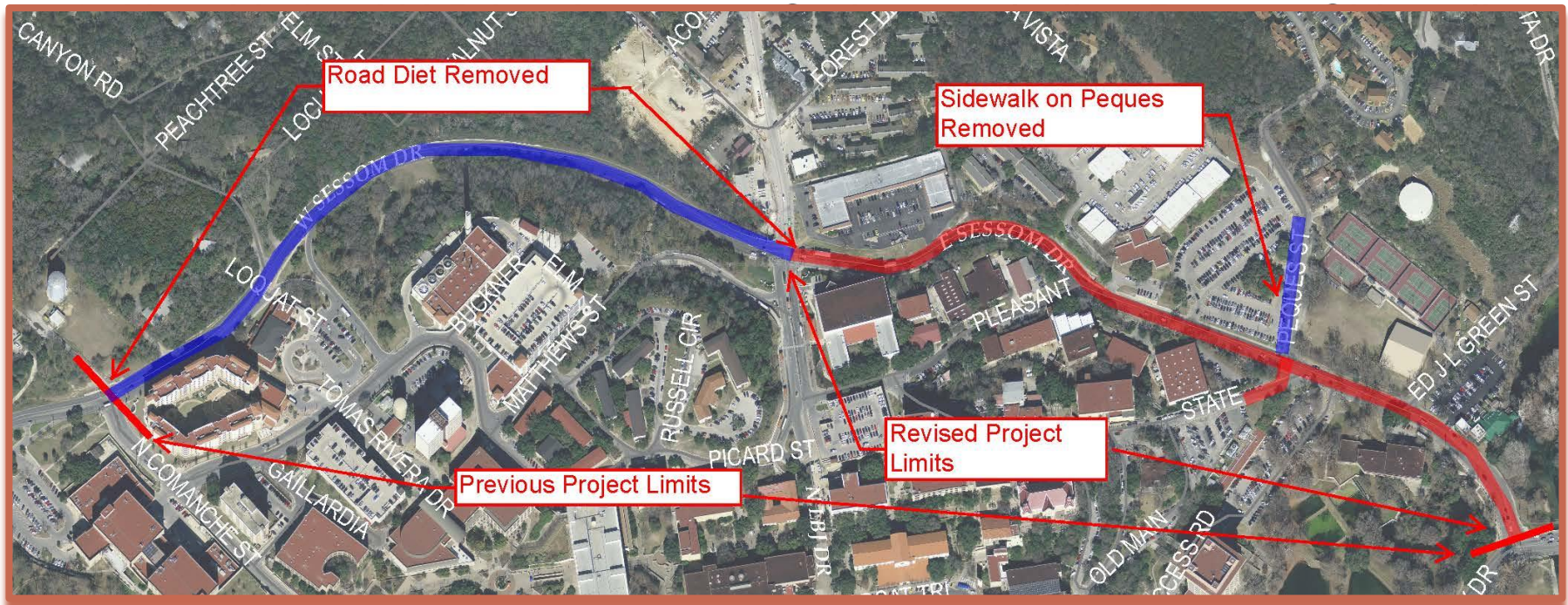
- ❖ Updates Since November 11, 2014 Council Presentation
- ❖ Project Limits Modified
- ❖ Project Scope Modified
- ❖ Half Change In Service
- ❖ Project Schedule Modified
- ❖ Texas State Coordination and Agreements
- ❖ Final Scope Summary



# PROJECT LIMITS

## ❖ Limits Shortened

- ❖ Old Limits: Comanche to Aquarena Springs; including Peques Sidewalk



# PROJECT LIMITS

## ❖ Justification for Revised Limits

- ❖ Road Diet between N.LBJ and Comanche
  - ❖ Was initially included in project scope to meet CAMPO requirements
  - ❖ Was not well received by general public and City Council
  - ❖ Staff has requested the project limits with CAMPO be modified
  - ❖ There is a future CIP project for a wastewater & drainage project within these limits
  - ❖ Staff is working with Texas State on ROW to build a 10' multi-use sidewalk within these limits
- ❖ Texas State requested the sidewalk on Peques be removed
  - ❖ Texas state was funding 100% of this sidewalk and they requested the sidewalk to be installed in early design stages

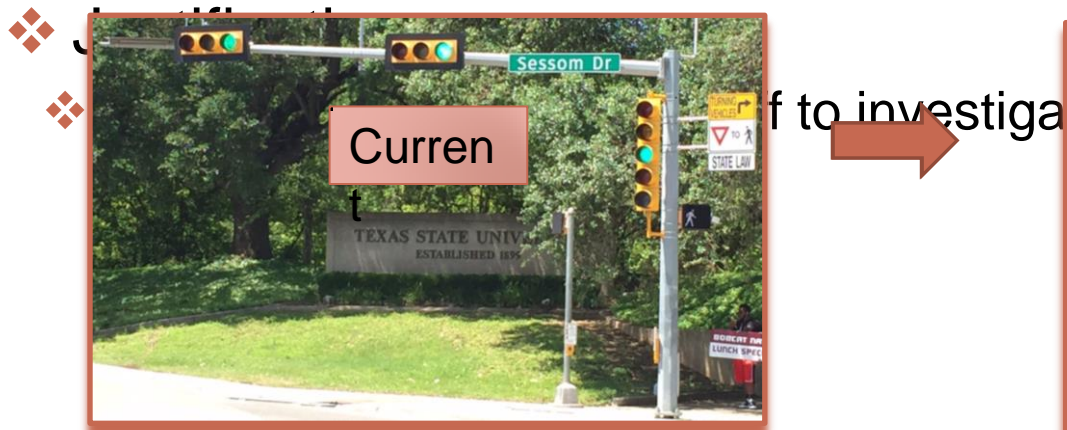




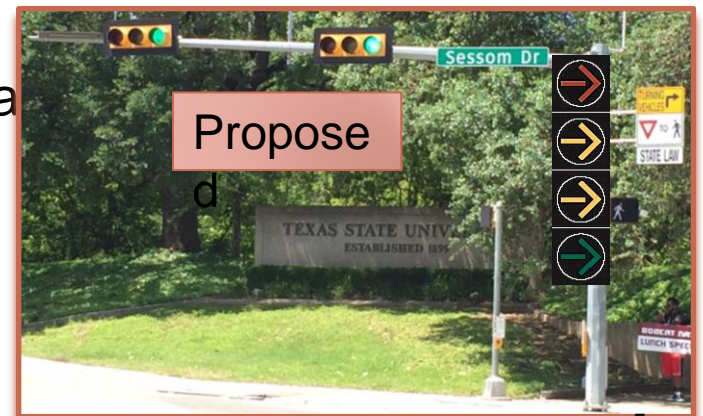
# SCOPE REVISIONS – ADDED SCOPE

## ❖ Pedestrian Crossing at Sessom and Aquarena Springs

- ❖ Additional design and construction work added to improve pedestrian crossing
- ❖ Switch out traffic signal heads and adjust timing so we can restrict both right and left turning movements
- ❖ Provide a protected walk period for pedestrians crossing Sessom, when the pedestrian signal is actuated

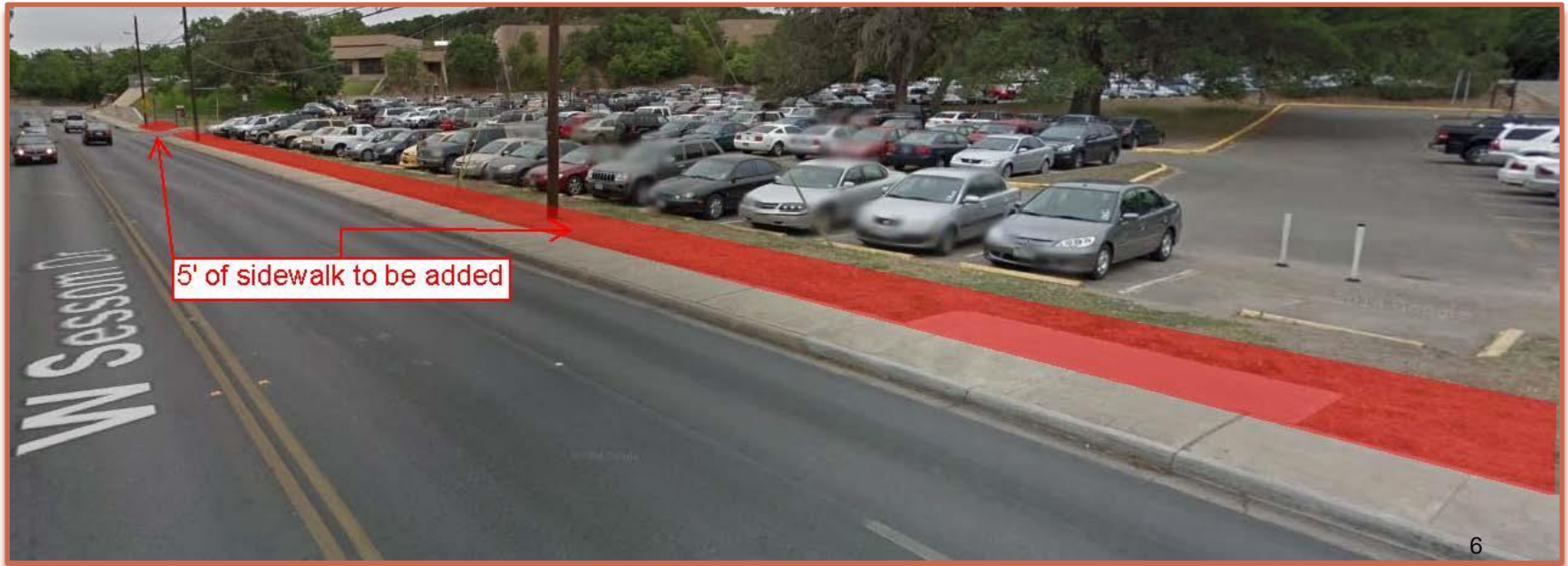


to investigate



# SCOPE REVISIONS – ADDED SCOPE

- ❖ Widen Existing Sidewalk
  - ❖ 5' sidewalk on Sessom from Peques to Texas State Facilities Retaining Wall will be widened to 10'
- ❖ Justification
  - ❖ Added sidewalk will help meet pedestrian needs



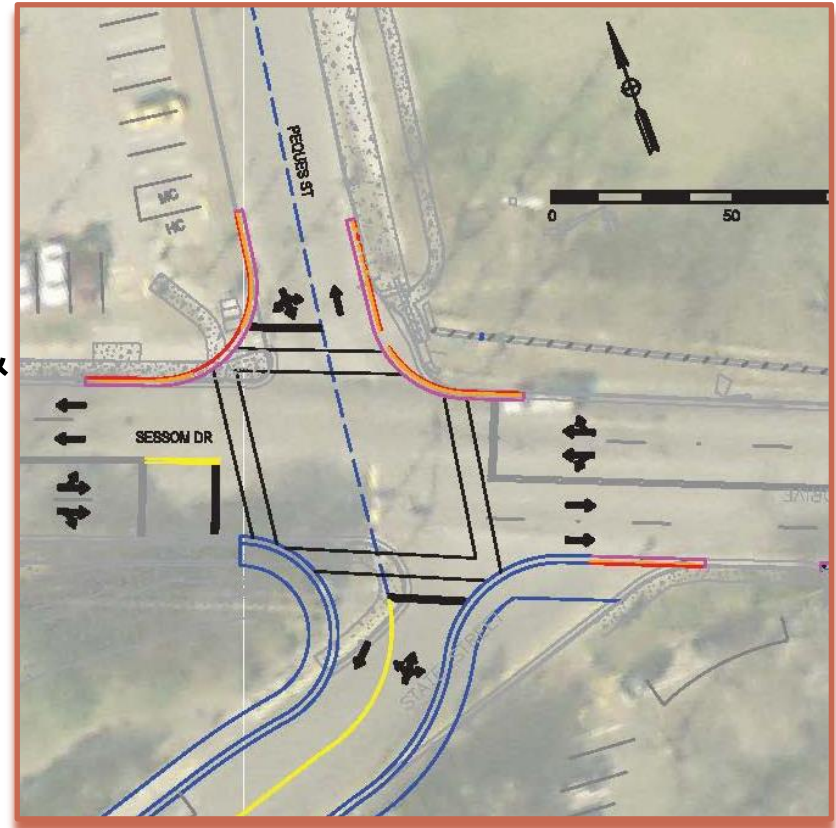
# SCOPE REVISIONS – MODIFIED SCOPE

## ❖ State Street Alignment

- ❖ Shift the alignment 13' east; compared to previous design
- ❖ Intersection will still be a 4 way signalized intersection
- ❖ Removed culvert repairs at Sessom & State Street
- ❖ Removed Rain Garden

## ❖ Justification

- ❖ Required to revise intersection for environmental clearance due to recently discovered salamander traps

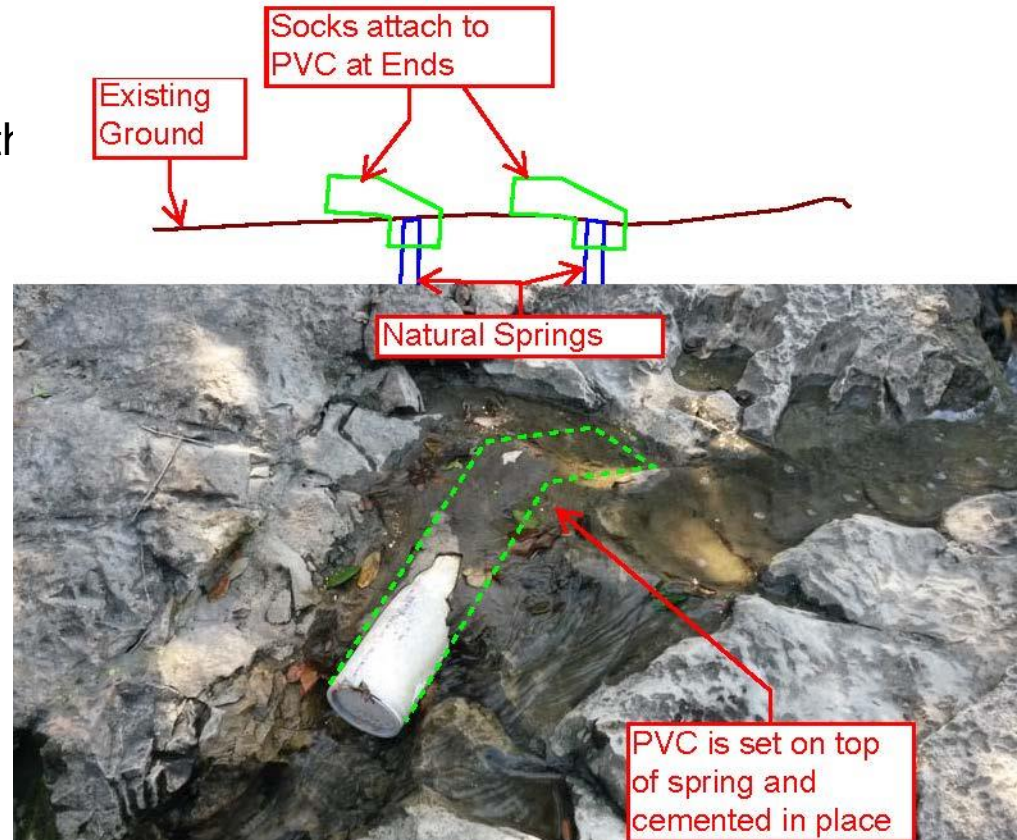




# SCOPE REVISIONS – MODIFIED SCOPE

## ❖ Salamander Traps

- ❖ Installed by Dr. Schwartz in Oct. 2014 at the request of the US Fish and Wildlife Services
- ❖ Sessom plans were in 90% design phase in Oct. 2014
- ❖ Traps capture blind salamanders as they leave natural springs in the area





# SCOPE REVISIONS – MAJOR REVISIONS

- ❖ Revise Pleasant Street Intersection
- ❖ Revise steep driveway to facilities building
- ❖ Update Environmental Clearance documentation – required for CAMPO funding
- ❖ Update plans to accommodate revised TXDOT specifications adopted Nov 1, 2014– required for CAMPO funding
- ❖ Additional erosion control measures
- ❖ Additional lighting on Texas State Sidew
- ❖ Timing and Phasing of Traffic Signals
- ❖ Sanitary sewer plans to address conflict



# HALFF CHANGE IN SERVICE

- ❖ Seeking Council Approval for Change In Service #3 = \$184,733.80
- ❖ High change in design cost is associated with multiple scope changes and required efforts due to CAMPO requirements
- ❖ Original Contract = \$181,723.08
- ❖ Change In Service #1 = \$44,932.50
- ❖ Change In Service #2 = \$49,932.50
- ❖ Revised Contract Amount = \$461,337.48

# CONSTRUCTION SCHEDULE & ESTIMATE

- ❖ Construction start moved from Fall 2015 to Spring 2016
- ❖ Utility Relocation will start in Fall 2015
- ❖ Justification
  - ❖ Need to allow time for overhead utility to relocate
  - ❖ Need to allow time to revise plans based off scope revisions
  - ❖ Need time to get agreements in place with Texas State
- ❖ Construction Estimate \$2.1-\$2.3 million
  - ❖ CAMPO Funding = \$689,000
  - ❖ Texas State Construction Costs Sharing =  $\pm$ \$340,000



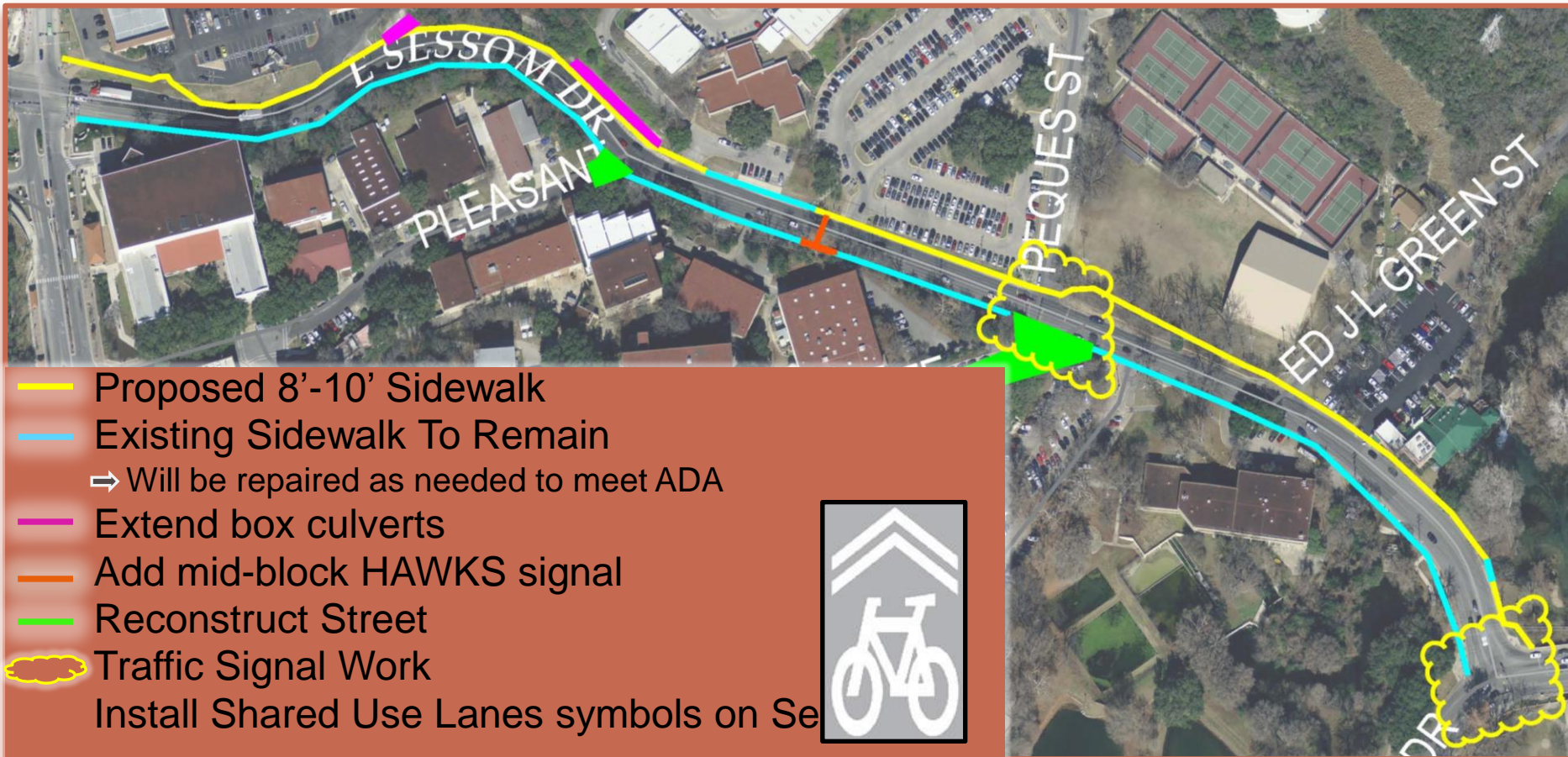


# TEXAS STATE COORDINATION

- ❖ Texas State is participating in the cost with the project
- ❖ City and University Staff working on agreements
  - ❖ **ROW Investigation** – Identify ROW on Sessom from Aquarena Springs to Comanche and on Peques
  - ❖ **ROW SWAP** – Swap Vista Street ROW for additional ROW needed to complete the Sessom project

Summary of Cost Sharing	Total Cost	COSM Cost	TxSt Cost	CAMPO
Total	±\$ 2,700,000	± \$ 1,551,000	±\$ 460,000	\$689,000

# SUMMARY OF FINAL SCOPE



# QUESTIONS

