

Agency	Abundant Life Christian Church
Program	Peace by Piece
San Marcos Service Address	101 Uhland Road
Requested	\$83,075
Recommended	\$20,000

**ABUNDANT LIFE CHRISTIAN CHURCH
DBA PEACE BY PIECE
REVISED USAGE OF PROPOSED BUDGET 2025**

DESCRIPTION	REQUEST	
PROGRAM: MENTAL HEALTH COMPONENT		
DIRECTOR (20%)	\$ 4,800.00	Performance of administrative oversight for the functioning of the program
COUNSELORS 16 CLOCK HOURS @ 4/MO @150)	\$ 20,000.00	Perform daily/weekly contact with clients. Intake, documtnation and follow-up.
MH ASSOCIATE (4 ASSOC @ 6 HRS/WK/4 WK X \$15) (CLOCK HOURS @\$15)	\$ 17,280.00	Services cost for Licensed Professional Counselors who provide hourly rate counseling and on-premise group sessions.
CHIEF EXECUTIVE OFFICER (10%)	\$ 5,196.00	Administrative costs associated with Peace By Peace oversight.
CHIEF FINANCIAL OFFICER (10%)	\$ 4,507.00	Administrative costs associated with bookkeeping and reporting serivces for Peace By Piece.
TRANSPORTATION		
(ASSISTANCE WTH GAS & UBER - MILEAGE 3552@.52/MI)	\$ 5,541.00	Transportation costs associated with providing rides to clients who are unable to get to appointments.
RENT UTILITES & SUPPLIES	\$ 9,483.00	Rental for office space and other associated supplies.
TRAINING	\$ -	
ADVERTISEMENT/MEDIA	\$ -	
TOTAL MENTAL HEALTH	\$ 66,807.00	
PROGRAM: SEX TRAFFICKING		
PREVENTATIVE EDUCATION PRESENTATI4 @ \$500 EA (RANSOMED LI - 4 Sessions)	\$ 2,000.00	Preventative education presentations by Ransomed Life to parents and children. This covers honorarium cost.
TOTAL SEX TRAFFICKING	\$ 2,000.00	
PROGRAM: FOOD INSECURITY		
ADMINISTRATION & STAFFING 416 HOURS @52 WKS/	\$ 6,240.00	Administrative costs associated with coordinating food resources and distribution planning.
VOLUNTEER STAFFING 24 HOURS/WK@52WEEKS		Stipend for volunteers who assess needs, sort food items and distribute food.
TRANSPORTATION <u>325@.52/MI*12</u>	\$ 2,028.00	Transportation costs associated with providing food to clients who are immobile or have special needs.
FOOD STOCK MONTHLY DISTRIBUTION	\$ 6,000.00	Additional healthy option food purchases for those who have special dietary requirments.
TOTAL FOOD INSECURITY	\$ 14,268.00	
TOTAL GRANT SUBMISSION	\$ 83,075.00	

Application Completeness Check for HSAB	Abundant Life Christian Church Peace by Piece
Questions	
Are all questions answered?	Yes
Is the application signed? (this is a certification)	Yes
Does the program have measurable outcomes?	Yes
Is the agency a Human Services Agency?	Yes
Is the agency overseen by a Board of Directors?	Yes
Required Attachments	
BUDGETS	
1. Agency budget for current fiscal year	OK - confidential
2. Agency budget proposed for next fiscal year	OK - confidential
3. Program budget for current fiscal year	NA
4. Program budget proposed for next fiscal year	Yes
5. Budget showing the exact uses of the HSAB funding	Yes
BOARD OF DIRECTORS INFORMATION	
6. Board of Directors membership roster	Yes
7. Board of Directors Meeting Attendance Record for current year	Yes
8. Board of Directors City of Residence	Yes
9. Board of Directors membership criteria	Yes
ORGANIZATION INFORMATION	
10. Organizational chart with names and titles of staff	Yes
11. Current IRS Form 990, pages 1 and 2 (not required for churches)	NA
12. Non-discrimination policy statement	Yes
Preferred Attachments - 3 Letters of Support	
Letters of support from members of the San Marcos Community	Yes
Attachments if Applicable	
Latest audit or CPA signed review, if applicable	
Policies and Procedures for the proposed Program, if available	
Note: We are not requiring Texas Secretary of State registration	

City of San Marcos Human Services Grants
FY 2025 Application

I. SUMMARY INFORMATION

Please spell out organization name and program name completely, without acronyms.

Applicant Organization: Abundantly Life Christian Church – Peace by Piece

Contact Name: Pastor Darius Todd Telephone: 512-353-1010

Contact E-Mail Address: pastor.todd@alccsm.org Website: www.alccsm.org

Mailing Address: PO Box 1350, San Marcos, Texas 78667-1350

San Marcos Service Address for this Program: 101 Uhland Road, San Marcos, Texas 78666

Who is authorized to execute program documents? (Name, Title) Pastor Darius Todd, Chief Executive Officer and Elder

Jacqui Todd, Executive Director

Program Name: Peace by Piece – Abundant Life Cares Outreach and Community Resource Assistance

Amount of Funds Requested: \$ 125,075.00

What percentage of the cost of this program is requested as funding through this application? 50%

II. QUESTIONS

All questions must be answered. Please type your answers.

OVERVIEW

1. What is the agency's or organization's mission?

Our purpose is to promote a better standard of living for the disenfranchised, unhoused, incarcerated, formerly incarcerated, and those in poverty. We aim to empower individuals who are struggling with burnt out hopes and dreams and unhealthy lifestyles through mentoring, mental health services, and life skills training and purpose preparation.

Our goal is to promote inclusiveness, racial harmony, economic advancement, leadership skills training, and personal development.

2. Briefly summarize the program for which funding is being requested and the services it provides.

Abundant Life Christian Church is seeking funding for the evolving Peace by Piece program, Abundant Life Cares. This program will support the current and increasing community outreach with the following resources:

1. **Mental Health Activities** - Our comprehensive mental health program is staffed with licensed counselors and paraprofessional volunteer support staff. We offer expert assistance for mental health crisis support, mental health disorders such as self-harm, suicide prevention, substance abuse rehabilitation resources, and various other preventive and supportive measures.
2. **Sex Trafficking** - We are launching a groundbreaking program aimed at addressing the urgent issues of sex trafficking within young adults and child populations. This includes cyberbullying, bullying, and suicide prevention.
3. **Food Insecurity** - Our food program is committed to providing vital food assistance to those in need. Furthermore, we strive to offer healthy and suitable options for individuals facing food allergies and/or dietary restrictions. In addition, we provide these resources on a need basis and partner with local businesses and organizations to fill in the gap.

COMMUNITY NEED AND JUSTIFICATION - 20 POINTS

MENTAL HEALTH SUPPORT AND PREVENTION SERVICES

1. Describe in detail the need for this program in San Marcos.

Hays County faces a significant shortage of mental health resources, especially for underserved individuals who are unable to afford professional services. The Hays County Community Health Assessment shows confirms that this need has increased. Therefore, our program serves as a critical lifeline, offering swift assistance to those in crisis through a blend of paraprofessional and professional support along with necessary referrals. It is our mission to ensure that everyone in need receives the vital help they deserve.

As a church, we have become a trusted beacon of hope, attracting individuals in need of assistance, and we are gratified to receive referrals from others who have witnessed the positive impact we have had on those we serve.

2. Has the need for this program been increasing in recent years?

The demand for assistance in Hays County has surpassed the available resources, especially since the onset of the pandemic. We have observed a notable increase in individuals requiring general and critical mental health resources and struggling to access the assistance they need. To address this challenge, we are dedicated to providing the necessary tools and resources to support individuals in their professional care development. Our team is committed to leveraging volunteer staff resources to facilitate intake and assessment processes, ensuring that we can identify and secure the vital resources or funding streams needed to help those who need it most.

3. Client Information

Definitions:

Direct Client - individuals or families immediately affected or personally served by the helping agency.

Our clients encompass a wide range of individuals, including youth, teenagers, young adults, adults, college age and students, members of the LGBTQIA+ community, and pregnant women and the elderly.

Questions:

a. Describe the direct clients for this program.

Our clients encompass a wide range of individuals, including youth, teenagers, young adults, adults, college students, members of the LGBTQ community, and pregnant women and the elderly.

These direct clients face a range of challenges, from family and domestic violence to substance abuse, self-harm, suicidal thoughts, body image issues, family dynamics, foster care, and the need for initiatives to prevent incarceration.

b. How is the program marketed to direct clients? How do you find these clients?

Currently, we rely on our in-house team and business and organization referrals for our marketing efforts. With increased funding, we aim to enhance our outreach by engaging in social media advertising, partnering and collaborating with established organizations that provide these services at no cost.

c. Expected total annual unduplicated direct clients who are City of San Marcos residents:

Our expected total of annual unduplicated direct clients for the calendar year is 300. That calculates to approximately 25 unduplicated clients per month. Those clients are being managed by 4 volunteer support staff members.

SEX TRAFFICING PARTNERSHIP SUPPORT ASSISTANCE

1. Describe in detail the need for this program in San Marcos.

This support assistance is in a developmental phase with the professional organization that is specific focus on this topic.

2. Has the need for this program been increasing in recent years?

We are in the process of gathering data from our partnering professionals to investigate the measurable data to inquire on our phase one of implementing our outreach.

3. Client Information

Definitions:

Direct Client - individuals or families immediately affected or personally served by the helping agency.

Questions:

a. Describe the direct clients for this program.

This program will support our youth to adult target audience.

b. How is the program marketed to direct clients? How do you find these clients?

We are in discussions to determine our community reach, however, the professional organization will provide all documentation needed to ensure the program and its attendance.

c. Expected total annual unduplicated direct clients who are City of San Marcos residents:

We anticipate quarterly gatherings of 75 attendees for a total of 300 unduplicated direct clients.

FOOD INSECURITY ASSISTANCE

1. Describe in detail the need for this program in San Marcos.

In light of our current economic situation, the demand for food assistance has surged. Both referrals and walk-ins for support have increased. Consequently, we are intensifying our efforts and forging partnerships with other agencies to meet this growing demand. A pressing issue we are now addressing is the rising number of college age and college students experiencing food insecurity. Many are unable to access public assistance due to conflicts with their college school schedules and various public locations. Our location uniquely positions us to provide direct support to these students, as well as to young families and individuals within a mile and a half radius of the University college apartments and community homes in the Northwest sector of the San Marcos area. Our location is on the San Marcos and Texas State Bus route.

2. Has the need for this program been increasing in recent years?

In the last three years, our number of requests has doubled annually, illustrating an escalating demand for our services as the word spreads. Our forthcoming facility has been purposefully tailored to meet this growing need and will be fully operational throughout the grant cycle.

3. Client Information

Definitions:

Direct Client - individuals or families immediately affected or personally served by the helping agency.

Our clients encompass a wide range of individuals, including youth, teenagers, young adults, adults, college age and students, members of the LGBTQIA+ community, and pregnant women and the elderly.

Questions:

a. Describe the direct clients for this program.

Our clients encompass a wide range of individuals, including youth, teenagers, young adults, adults, college age and students, members of the LGBTQIA+ community, and pregnant women and the elderly.

b. How is the program marketed to direct clients? How do you find these clients?

Our clients are from our local surrounding location. We do not have to find the clients as they come to us via referral from other organizations. We have relationships with various community businesses and organizations that forward us as another food resource. In addition, we market through our church and website.

c. Expected total annual unduplicated direct clients who are City of San Marcos residents:

We anticipate weekly food distribution of an average of 20 families which will affect 400 unduplicated direct clients.

IMPLEMENTATION - 15 POINTS

1. How exactly will these funds be used?

All funding secured will be used to directly support the three support and assistance areas *Mental Health, Food Insecurity, and Sex Trafficking*.

Due to our diverse community population our support ranges from that of family households with youth to high school age children as well as individuals from college age and college students to 60+ including those that are unhoused.

With the assistance of our highly trained and licensed counselors and support staff and intake process we can determine the best course strategy to appropriately meet or provide the necessary resources to assist everyone.

Meeting the needs could be as simply as providing a box of healthy food and recipe options to arranging for an immediate appointment with an expert to assist with critical life/death self-harm.

2. What specific, measurable outcomes or results do you hope to achieve with this program?

Through this program, we can assist those in critical need through our community support program, Abundant Life Cares. The significant number of individuals we've supported in the past year is a compelling reason to maintain our progress and explore new, innovative approaches to provide lasting and reliable support services.

The chart below shows the specific areas of concentration and the program area it falls as well as the increase in results for the last 60 days.

INDIVIDUAL NEED	PROGRAM SERVICE AREA	INCREASE LAST 60 DAYS
ADULTS AGE	MENTAL HEALTH ASSISTANCE W/ COUNSELING	30%
AGES 18+ (FAMILY HOUSEHOLD W/ 3 OR MORE CHILDREN)	FOOD INSECURITY	
HOUSING VOUCHERS (ASSISTANCE W/ RENT)	COMMUNITY RESOURCE	25%
UNHOUSED	COMMUNITY RESOURCE	
VETERAN ASSISTANCE	FOOD INSECURITY/ MENTAL HEALTH ASSISTANCE	
TEENS (MIDDLE & HIGH SCHOOL)	TEEN MENTAL HEALTH	
SEX TRAFFICKING	* SEMINAR/MENTORSHIP/1-ON-1 ASSISTANCE	

*The teen cyberbullying and suicide need is currently being launched through organization partnership.

With input and expert guidance from our partners, volunteer lived experienced and staff and an increasing demand for assistance, we understand the need to continually innovate and enhance our program to better serve those in critical need.

With additional funding, we plan to enhance the training and certification of our volunteer counselors and support staff. Additionally, we aim to not just expand our food pantry, but also offer healthy options for individuals with allergies and dietary restrictions.

Given the escalating issues of drug overdose, suicide, and mental health challenges among teens, we are committed to providing funding for those in need to access vital assistance from professional experts, including motivation, training, mentorship, guidance, and if necessary, care facilities.

Our ultimate goal is to ensure that every person, regardless of their circumstances, has the necessary tools and resources to become a positive and self-sustaining member of and in our community.

3. List the title of each position for which funding is requested and the activities associated with those positions.

Position Name	Full Time/Part Time	Activities
Executive Director	PT	This position will support all program operations duties and responsibilities relate and not limited to the overseeing of employees, volunteer staff, and volunteers

Marketing & Communications Specialist (College Intern)	Stipend	this position will support all marketing efforts for our website, internal and external documentation.
Social Worker (College Intern-Credit Hours)	PT	for enrolled and active college social worker Internship seeking college credit. This position will assist with hands-on activities providing intake, assessment, and other related services to individuals as requested
Food Pantry Coordinator	PT	maintains community and other human service providers' partnerships and assists in the development and distribution of food resources for the community individuals in need.
Grant & Community Coordinator	PT	research and assess', grants, scholarships, and other donation opportunities with intent to write, and manage documentation and reporting
Financial Assistant	PT	Assist the CFO with the organization of financial documents, databases, invoices, clerical filing, communications and other duties as assigned
Mental Health Program Professional	\$2000 – one-time fee \$500/month program services	Licensed PLC MA, NCC Professional
Mental Health Training	\$1000/month	Volunteer Counselor/Staff
Sex Trafficking Professional	Pending	Cost per participant/group/ seminar/ mentorship
Administrative Assistant (College Intern)	Stipend	Works closely with employees, volunteers, and staff to assist with correspondence, file and recordkeeping, and other clerical duties assigned

4. If funding is not available at the requested amount, what is the minimum Human Services Grant funding needed to be able to run this program?

To successfully meet the needs of our community and to operate the *Abundant Life Cares Program* we need a minimum amount of \$75,000.00. These funds will help us appropriately expand and operate the Abundant Life Cares program by ensuring we hire the necessary

key positions and program materials and supplies to continue assist and provide community clients with the services we offer.

IMPACT AND COST EFFECTIVENESS - 25 POINTS

- 1. Programs can provide value by deeply impacting the lives of a few, with effects that may ripple through generations, or by providing smaller but meaningful impact to a larger group. Describe in detail the impact this program will have on the identified need and on San Marcos residents.**

STEPPING UP TO SERVE is our commitment at Abundantly Life Christian Church. Our community is growing stronger every day, week, month, and year. As a church, we are dedicated to empowering individuals to live victorious lives. We seek to build meaningful relationships with everyone who walks through our doors, offering hope for a better tomorrow. Collaborating with businesses, organizations, and community leaders in the San Marcos region, we aim to be a catalyst for positive change and progress. With the support of our local community, we are championing the creation of a nurturing and resilient San Marcos. Together, we can address the needs of our residents, including those who are unhoused, and provide resources for healing, health, and harmony through unified effort.

- 2. Discuss the amount of overhead compared to program costs.**

The Abundant Life Cares Program is currently operating with very limited funding. This is restricting our ability to expand our outreach to licensed professional experts and trained volunteer staff. Our forecasted budget shows that we need more funds to efficiently provide inclusive and sustainable capacity and training implementations to ensure quality service. With increased funding, we can bridge the educational gap and better support those we serve.

- 3. Provide a brief description of other funding sources, volunteers, or in-kind donations that are expected to be used with this program.**

The program is still planning to receive donation support from the congregation of the ALCC church. We are currently receiving in-kind donations and are in partnership negotiations with our local San Marcos Food Bank to arrange food pick-up and distribution on Fridays. Additionally, we are reaching out to various grocery stores within our community to seek assistance with providing frozen meats, fruits, and vegetables for our outreach efforts.

- 4. What has your organization done in the past two years to raise different funding for this program?**

Our organization is mainly run through benevolent donations from the community. This and other opportunities presented from organizations like the St David's Foundation and other philanthropic organizations are new sources of income that we are now engaging with. We service the San Marcos area. Therefore, we are approaching the City of San Marcos as one of our first partners.

COMMUNITY SUPPORT – 10 POINTS

- 1. Please submit 3-5 letters of reference that indicate strong local support for the program and the agency's ability to implement it as described in the application.**

Within the supportive documents are program support letters from the following:

Cyrus Gray – Community Member

Shetay Ashford-Hanserd, Ph.D. – Accyss Network

Paul Buntyn – Community Member

- 2. How is the Board of Directors selected?**

The members of the Board of Directors shall, upon election, immediately enter upon the performance of their duties and shall continue in office until their successors shall be duly elected and qualified. All members of the Board of Directors and Advisory Council must be approved by a majority vote of the members present and voting. No vote on new members of the Board of Directors, or Advisory Council, shall be held unless a quorum of the Board of Directors is present.

Each member of the Board of Directors shall be a member of the Organization whose membership is at no cost and shall hold office for up to a two-year term as submitted by the nominations committee.

- 3. How often does the Board meet?**

The board of directors' meetings are held on a quarterly basis per calendar year. On occasion, meetings may be called to assist with critical decision making and/or financial discussion and approval.

- 4. What actions do Board members take to support the programs of the agency or organization?**

All board members currently support the program by providing advisory and in-kind support when called upon.

5. How many volunteers does your agency or organization have and how many hours do they spend on the program requesting funding?

We average 5 weekly volunteers who provide upwards of 120 hours per week. This includes members who provide mental health evaluations, food distribution efforts and planning.

COUNCIL PRIORITIES - 30 POINTS

1. How long has this program served San Marcos residents? (10 points if at least 2 years)

The Food Pantry program has been a resource to the community for over 5+ years.

2. Does the agency have an office in San Marcos? (10 points if yes)

Currently, our Peace by Piece nonprofit organization will reside within the premises of Abundant Life Christian Church.

3. Describe how this funding creates an increase in services or an increase in the number of people served. (10 points)

Currently, our ALCC church relies on the generous donations from our congregation. As our church attendance grows and our presence in Hays County expands, we are receiving an overwhelming number of calls from the community seeking assistance. It is our mission to not only meet these needs but also to help our community flourish.

In addition, due to our strategic location, we have seen a surge in the demand for food assistance among college students. Our three food distribution locations on the east side of IH-35 serve as vital resources, with our location being the closest to Texas State University and the sole provider in the northwest region of San Marcos. Our location sits along the metro bus routes and the San Marcos ISD headquarters.

II. FUNDING RESTRICTIONS

By signing this application I certify the following to be true:

1. All Human Services Grant funding will be spent on San Marcos residents, except for school-based programs, in which case it may be spent within the San Marcos Consolidated Independent School District boundary.
2. Funding requested is not more than 50% of the total funding for the agency.
3. Funding will not be used to fund more than 20% of a full time position.
4. Agency has been in existence for at least 2 years. (This can include serving communities other than San Marcos.)

SUBMITTED AND APPROVED BY:

Signature

Date

Printed Name

Title

The information in the form below enables us to precisely direct our assistance to the specific services our clients require. The measurable data points are crucial in capturing the necessary information to secure additional funding and address the escalating needs of our community. While we work on acquiring a suitable CRM system, we will utilize our internal database, which effectively supports reporting.

ALCC CARES CENTER

Client Intake Form

INTAKE REQUIRED

Name _____ Date _____
 Address _____ Date of Birth _____ # in Household _____
 Phone _____
 Email: _____ Marital Status. ☐ Single ☐ Married ☐ Divorced
 Please Select your race. ☐ Asian ☐ White ☐ African American ☐ American Indian ☐ Hispanic/Latino
 Ages in the home. _____ 0-5yrs _____ 6-18yrs _____ 19-40yrs _____ 41-59yrs _____ 60 and over
 Annual Income Scale: ☐ \$0-\$9K ☐ \$20K - \$30K ☐ \$10K - \$19K ☐ \$31K - \$40K

**Please answer the questions below.

How did you learn about us? _____
 Would you like Prayer? ☐ Yes ☐ No
 Does your family receive outside assistance? ☐ Yes ☐ No If yes, please describe. _____
 Are you in need of additional assistance? ☐ Yes ☐ No Please explain. _____
 Are you in need of mental health resources? ☐ Yes ☐ No If yes, please describe. _____
 Are you homeless? ☐ Yes ☐ No Are you disabled? ☐ Yes ☐ No

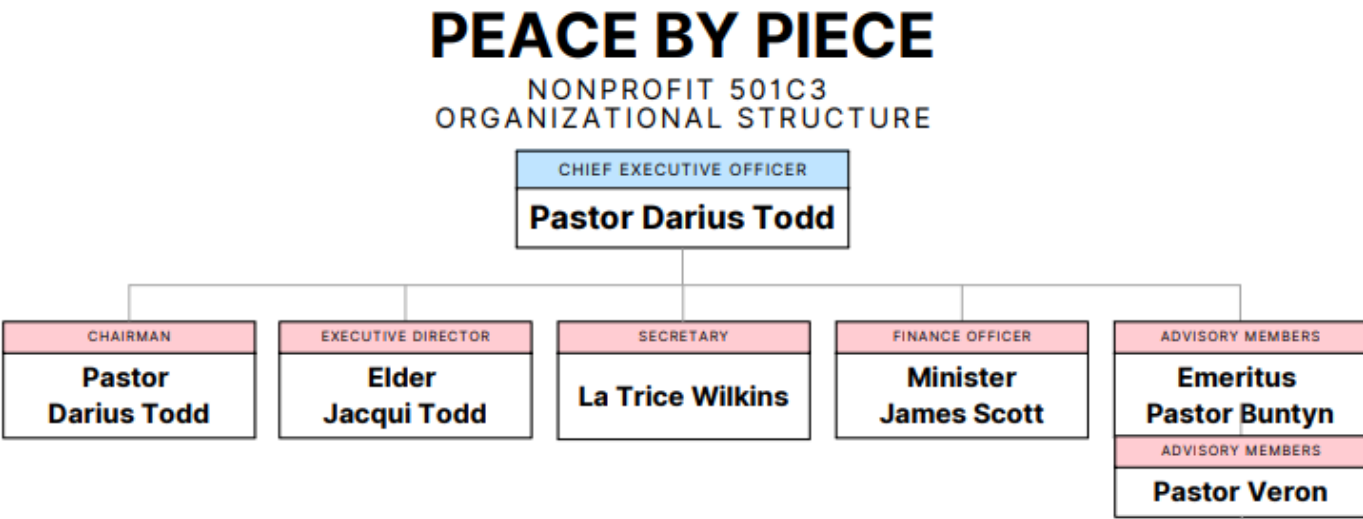
**Please mark all the areas you may need additional assistance.

<input type="checkbox"/> Personal Identification	<input type="checkbox"/> Clothing	<input type="checkbox"/> Child Care
<input type="checkbox"/> Housing	<input type="checkbox"/> Shoes	<input type="checkbox"/> Parent Support
<input type="checkbox"/> Job	<input type="checkbox"/> Toiletries	<input type="checkbox"/> Elder Support
<input type="checkbox"/> Resume	<input type="checkbox"/> Laundry	<input type="checkbox"/> Family Support
<input type="checkbox"/> Interview	<input type="checkbox"/> Self-Care	<input type="checkbox"/> Adult Workshops
<input type="checkbox"/> Medical Literacy	<input type="checkbox"/> Community Services	<input type="checkbox"/> Teen Support
<input type="checkbox"/> Financial Literacy	<input type="checkbox"/> Community Fellowship	<input type="checkbox"/> Transportation
<input type="checkbox"/> Life Coaching	<input type="checkbox"/> Education (GED/College)	<input type="checkbox"/> Other _____
<input type="checkbox"/> Counseling	<input type="checkbox"/> Technology Training	

The information you provide in this intake form is used exclusively for internal purposes. We use this information to assist with the services we offer and to better guide you to the appropriate resources that can help address your specific needs. If your specific need is not included in the list above, please share it during your conversation with an ALCC CARES representative.

Please print and sign your name below to receive your food provisions.

Print Name _____ Sign Here _____



Peace by Piece
Board of Directors Information

MEMBERSHIP ROSTER

Darius Todd, Chief Executive Officer (San Marcos)
Jacqueline Todd, Secretary (San Marcos)
James Scott, Head of Finance (Kyle)
Guy Williams (San Marcos)
Leroy Anderson (New Braunfels)

MEETING ATTENDANCE RECORD

All members have been present for quarterly meetings held in Q1 – Q3

MEMBERSHIP CRITERIA

Members are selected from the pool of volunteers based on the community knowledge, technical expertise and strategic needs of the organization. Tenure varies based on the needs of the board and is reviewed semi-annually. Board members are subject to the standards of conduct and Abundant Life Bylaws.

Peace by Piece
Agency Budget for Current Fiscal Year
And Program budget for current fiscal year

Due to the nature of a Christian ministry, we request the confidentiality to manage the funds of our donors. Our desire is to meet the requirements of the grant submission while keeping budget information for the agency and current program in a more confidential manner.

Peace by Piece
USAGE OF PROPOSED BUDGET 2025

Attached.

DBA PEACE BY PIECE
PROPOSED BUDGET 2025

<u>DESCRIPTION</u>		<u>SALARIES</u> <u>& OTHERS</u>	<u>REQUEST</u>	<u>INKIND</u> <u>CONTRIBUTION</u>
PROGRAM: MENTAL HEALTH COMPONENT				
DIRECTOR (20%)		\$ 24,000.00	\$ 4,800.00	\$ 19,200.00
COUNSELORS	16 CLOCK HOURS @ 4/MO @150)	\$ 28,800.00	\$ 20,000.00	\$ 8,800.00
MH ASSOCIATES	(4 ASSOC @ 6 HRS/WK/4 WK X \$15) (CLOCK HOURS @ \$15)	1440 MO*12 \$ 17,280.00	\$ 17,280.00	\$ 3,600.00
CHIEF EXECUTIVE OFFICER (10%)		\$ 51,961.00	\$ 5,196.00	\$ 46,765.00
CHIEF FINANCIAL OFFICER (10%)		\$ 45,071.00	\$ 4,507.00	\$ 40,564.00
TRANSPORTATION (ASSISTANCE WITH GAS & UBER - MILEAGE 3552@.52/MI)		\$ 5,541.00	\$ 5,541.00	\$ 1,111.00
RENT UTILITES & SUPPLIES		\$ 94,830.00	\$ 9,483.00	\$ 85,347.00
TRAINING		\$ 12,000.00	\$ -	\$ 12,000.00
ADVERTISEMENT/MEDIA		\$ 12,000.00	\$ -	\$ 12,000.00
TOTAL MENTAL HEALTH		\$ 291,483.00	\$ 66,807.00	\$ 229,387.00
PROGRAM: SEX TRAFFICKING				
PREVENTATIVE EDUCATION PRESENTATION HONORARIUM (RANSOMED LIFE - 4 Sessions)	4 @ \$500 EA		\$ 2,000.00	
TOTAL SEX TRAFFICKING		\$ -	\$ 2,000.00	\$ -
PROGRAM: FOOD INSECURITY				
ADMINISTRATION & STAFFING	416 HOURS @52 WKS/	\$ 6,240.00	\$ 6,240.00	\$ 1,036.00
VOLUNTEER STAFFING	24 HOURS/WK@52WEEKS			\$ 18,720.00
TRANSPORTATION	<u>325@.52/MI*12</u>		\$ 2,028.00	
FOOD STOCK	MONTHLY DISTRIBUTION	\$ 54,000.00	\$ 48,000.00	\$ 6,000.00
TOTAL FOOD INSECURITY		\$ 60,240.00	\$ 56,268.00	\$ 25,756.00
TOTAL GRANT SUBMISSION			\$ 125,075.00	\$ 255,143.00

Peace by Piece

Non-discrimination policy statement

Peace by Piece honors and respects its employees, interns, contractors, vendors, volunteers, and clients, and fully embrace the wealth of professional and lived experiences they bring to our organization. As such, we unequivocally uphold a strict non-discrimination policy. We stand by the rights and privileges granted by the Title VII of the Civil Rights Act, The Civil Rights Act of 1991, The Age Discrimination in Employment Act (ADEA) and other Federal and State laws governing conduct. We steadfastly believe in treating everyone equally, irrespective of race, sex, gender identification, sexual orientation, national origin, native language, religion, age, disability, marital status, citizenship, genetic information, pregnancy status, or any other characteristic protected by law.

Furthermore, The Abundant Life Christian Church (ALCC) is dedicated to equipping, serving, and preparing God's people to be shining examples of the Abundant Life. Therefore, should anyone experience discrimination, please know that our committed executive leadership is ready to address all concerns promptly. Rest assured that every complaint will be thoroughly and diligently investigated.

II. FUNDING RESTRICTIONS

By signing this application I certify the following to be true:

1. All Human Services Grant funding will be spent on San Marcos residents, except for school-based programs, in which case it may be spent within the San Marcos Consolidated Independent School District boundary.
2. Funding requested is not more than 50% of the total funding for the agency.
3. Funding will not be used to fund more than 20% of a full time position.
4. Agency has been in existence for at least 2 years. (This can include serving communities other than San Marcos.)

SUBMITTED AND APPROVED BY:

Signature

Date

Printed Name

Title

ABUNDANT LIFE CHRISTIAN CHURCH
DBA PEACE BY PIECE
PROPOSED BUDGET 2025

<u>DESCRIPTION</u>		<u>SALARIES</u> <u>& OTHERS</u>	<u>REQUEST</u>	<u>INKIND</u> <u>CONTRIBUTION</u>
PROGRAM: MENTAL HEALTH COMPONENT				
DIRECTOR (20%)		\$ 24,000.00	\$ 4,800.00	\$ 19,200.00
COUNSELORS	16 CLOCK HOURS @ 4/MO @150)	\$ 28,800.00	\$ 20,000.00	\$ 8,800.00
MH ASSOCIATES	(4 ASSOC @ 6 HRS/WK/4 WK X \$15) 1440 MO*12 (CLOCK HOURS @\$15)	\$ 17,280.00	\$ 17,280.00	\$ 3,600.00
CHIEF EXECUTIVE OFFICER (10%)		\$ 51,961.00	\$ 5,196.00	\$ 46,765.00
CHIEF FINANCIAL OFFICER (10%)		\$ 45,071.00	\$ 4,507.00	\$ 40,564.00
TRANSPORTATION (ASSISTANCE WTH GAS & UBER - MILEAGE 3552@.52/MI)		\$ 5,541.00	\$ 5,541.00	\$ 1,111.00
RENT UTILITES & SUPPLIES		\$ 94,830.00	\$ 9,483.00	\$ 85,347.00
TRAINING		\$ 12,000.00	\$ -	\$ 12,000.00
ADVERTISEMENT/MEDIA		\$ 12,000.00	\$ -	\$ 12,000.00
TOTAL MENTAL HEALTH		\$ 291,483.00	\$ 66,807.00	\$ 229,387.00
PROGRAM: SEX TRAFFICKING				
PREVENTATIVE EDUCATION PRESENTATION HONORARIUM	4 @ \$500 EA		\$ 2,000.00	
(RANSOMED LIFE - 4 Sessions)				
TOTAL SEX TRAFFICKING		\$ -	\$ 2,000.00	\$ -
PROGRAM: FOOD INSECURITY				
ADMINISTRATION & STAFFING	416 HOURS @52 WKS/	\$ 6,240.00	\$ 6,240.00	\$ 1,036.00
VOLUNTEER STAFFING	24 HOURS/WK@52WEEKS			\$ 18,720.00
TRANSPORTATION	325@.52/MI*12		\$ 2,028.00	
FOOD STOCK	MONTHLY DISTRIBUTION	\$ 54,000.00	\$ 48,000.00	\$ 6,000.00
TOTAL FOOD INSECURITY		\$ 60,240.00	\$ 56,268.00	\$ 25,756.00
TOTAL GRANT SUBMISSION			\$ 125,075.00	\$ 255,143.00

ABUNDANT LIFE CHRISTIAN CHURCH
DBA PEACE BY PIECE
USAGE OF PROPOSED BUDGET 2025

DESCRIPTION		REQUEST	
PROGRAM: MENTAL HEALTH COMPONENT			
DIRECTOR (20%)		\$ 4,800.00	Performance of administrative oversight for the functioning of the program
COUNSELORS	16 CLOCK HOURS @ 4/MO @150)	\$ 20,000.00	Perform daily/weekly contact with clients. Intake, documtnation and follow-up.
MH ASSOCIATES	(4 ASSOC @ 6 HRS/WK/4 WK X \$15) (CLOCK HOURS @\$15)	\$ 17,280.00	Services cost for Licensed Professional Counselors who provide hourly rate counseling and on-premise group sessions.
CHIEF EXECUTIVE OFFICER (10%)		\$ 5,196.00	Administrative costs associated with Peace By Peace oversight.
CHIEF FINANCIAL OFFICER (10%)		\$ 4,507.00	Administrative costs associated with bookkeeping and reporting services for Peace By Piece.
TRANSPORTATION			
(ASSISTANCE WTH GAS & UBER - MILEAGE 3552@.52/MI)		\$ 5,541.00	Transportation costs associated with providing rides to clients who are unable to get to appointments.
RENT UTILITES & SUPPLIES		\$ 9,483.00	Rental for office space and other associated supplies.
TRAINING		\$ -	
ADVERTISEMENT/MEDIA		\$ -	
TOTAL MENTAL HEALTH		\$ 66,807.00	
PROGRAM: SEX TRAFFICKING			
PREVENTATIVE EDUCATION PRESENTATION HONORA/ 4 @ \$500 EA (RANSOMED LIFE - 4 Sessions)		\$ 2,000.00	Preventative education presentations by Ransomed Life to parents and children. This covers honorarium cost.
TOTAL SEXTRAFFICKING		\$ 2,000.00	
PROGRAM: FOOD INSECURITY			
ADMINISTRATION & STAFFING	416 HOURS @52 WKS/	\$ 6,240.00	Administrative costs associated with coordinating food resources and distribution planning.
VOLUNTEER STAFFING	24 HOURS/WK@52WEEKS		Stipend for volunteers who assess needs, sort food items and distribute food.
TRANSPORTATION	325@.52/MI*12	\$ 2,028.00	Transportation costs associated with providing food to clients who are immobile or have special needs.
FOOD STOCK	MONTHLY DISTRIBUTION	\$ 48,000.00	Additional healthy option food purchases for those who have special dietary requirments.
TOTAL FOOD INSECURITY		\$ 56,268.00	
TOTAL GRANT SUBMISSION		\$ 125,075.00	

Subject: letter

Date: Wednesday, August 7, 2024 at 5:32:03 PM Central Daylight Time

From: pastor.buntyn@alccsm.org

To: 'Darius Todd'

I am Paul Buntyn, Sr. I am the Founder and Pastor Emeritus of the Abundant Life Christian Church of San Marcos. Since my retirement in 2020, I have the privilege and honor to witness the dedication and commitment to further a deliberate continuation and expansion of services provided by the Peace By Piece program of ALCC. Due to the recent covid pandemic, the need for mental health services has greatly increased. This is coupled with challenges already prevalent in our society. The pandemic highlighted the scarcity of mental health resources. State, county and local providers are struggling to provide adequate care. This has strained public assistance resources and burdens law enforcement and other public resources.

The Peace by Piece program is poised to reduce gaps in mental health services and food insecurity. These volunteers have been consistent in receiving ongoing mental health training that has greatly improved their effectiveness. This training has enabled them to avert suicides, self-harm, depression, family violence and other critical events that your citizens face. They have also connected with trained, certified, and credentialed professional counselors at reduced cost that allow the Peace by Piece staff and volunteers an avenue to escalate client needs.

The Peace by Piece program will prove to be a great asset to the City of San Marcos. Therefore, I support their request for funding recommend their efforts be supported by the City of San Marcos.

Sincerely,

Paul Buntyn
Pastor Emeritus, Abundant Life Christian Church
Pastor.buntyn@alccsm.org
512-787-0992

Subject: Peace by Piece Endorsement

Date: Wednesday, August 7, 2024 at 4:08:16 PM Central Daylight Time

From: Cyrus Gray

To: pastor.todd@alccsm.org

I wholeheartedly endorse Peace by Piece, having witnessed firsthand their transformative impact on a range of critical issues including incarceration, mental health, hunger, housing disparities, and community service. Their unwavering dedication to fostering a healthier and safer San Marcos, both in spirit and substance, has been nothing short of profound.

-Cyrus L Gray III



Human Services Advisory Board
City of San Marcos
630 E. Hopkins Street
San Marcos, Texas 78666

August 7, 2024

Dear Human Services Advisory Board Members

I am writing to express my overwhelming support for the Peace By Piece program provided by the Abundant Life Christian Church. I became aware of their valuable services in early 2024, and I have since recognized the critical importance of their work in addressing significant community needs.

The necessity for the services offered by Peace By Piece has been evident long before the onset of the Coronavirus pandemic. Issues such as limited mental health services, increasing food insecurity, and the alarming rise in sex trafficking have negatively impacted our ability to provide adequate care, burdened law enforcement, and strained public assistance resources.

The Peace By Piece program is uniquely positioned to meet these challenges and bridge the gaps in mental health services and food security for the citizens of San Marcos. Strategically located near a diverse population north of the university and easily accessible via I-35, San Marcos and Texas State University bus routes, and within walking distance for many students and residents, this program is readily available to those in need. Their team of credentialed and accredited counseling professionals is both effective and agile, capable of quickly responding to individuals in crisis. Additionally, their collaboration with organizations like Ransomed Life grants them access to trained education and counseling providers specializing in addressing the growing issue of sex trafficking in our region.

With funding from the City of San Marcos, the Peace By Piece program can significantly expand its services to a larger number of citizens. This expansion will not only decrease the reliance on

law enforcement and other limited resources but will also enhance the overall health and safety of our community.

Therefore, I strongly support the funding request for the Peace By Piece program and wholeheartedly recommend that their efforts be backed by the City of San Marcos. This program is crucial in serving the underserved populations of our city and providing the critical resources needed for holistic community support.

Thank you for your consideration.

Sincerely,

A handwritten signature in black ink, appearing to read 'Shetay Ashford-Hanserd', written in a cursive style.

Shetay Ashford-Hanserd, Ph.D.

Founder, President & CEO

Power 2 Prosper Community Development Corporation dba ACCEYSS Network

shetay@acceyss.org | work: 512.667.7444

www.power2prosper.org | www.acceyss.org