



Texas Comptroller of Public Accounts

Contract ID No. 556A1-2718 / IFB No. 304T-20-556A1

FY 2021

Preparer: Jason Roy

Base Model

Elkhart Coach ECII 7.3L V8 Gas 176" WB 14,500 GVWR

Base Model Price: \$ 74,780.00

Options: \$ 4,424.00

Other Available Options: \$ -

Unpublished Options: \$ 35,277.00



Vehicle Length	Lift Position	WC Positions	Total # Passengers	CDL Required
25	Rear	2	16	No

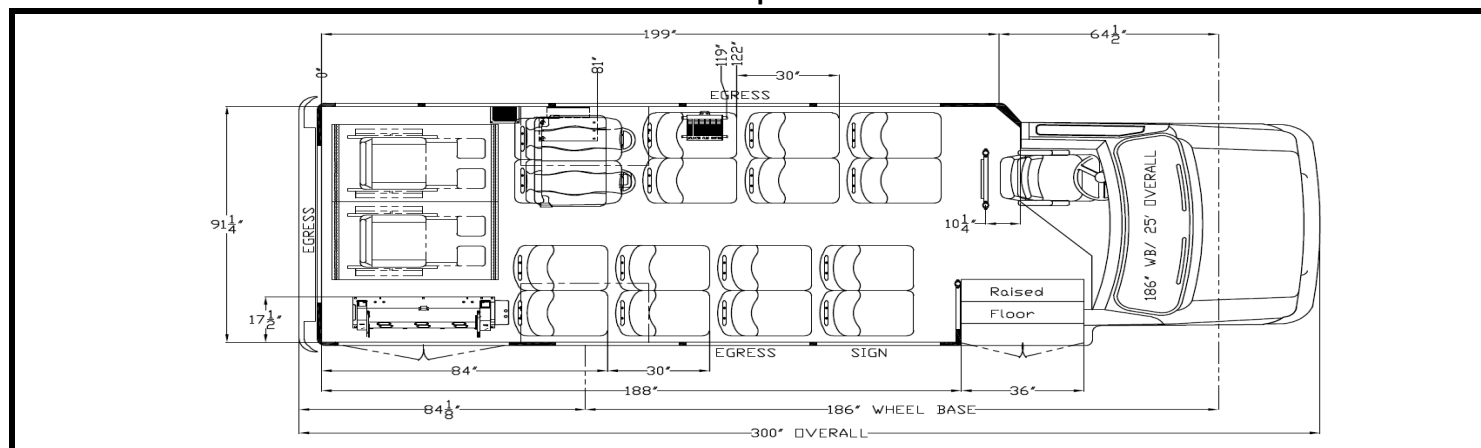
QTY Vehicles: 4 Total Contract Price: \$ 457,924.00

Per Vehicle Price: \$ 114,481.00

Customer Info

Customer:	City of San Marcos
Address:	401 East Hopkins San Marcos, TX 78666
Contact:	Pete Binion
Office Phone:	512-393-8451
Mobile Phone:	
E-Mail:	pbinion@sanmarcostx.gov

Floorplan



Chassis

Ford E-450 chassis - 14,500 GVWR
7.3L V8 gasoline engine
6-Speed TorqShift Automatic Transmission
Twin I-Beam IFS front axle - 5,000 lbs.
Full-floating, Dana 10.75" HD rear axle - 9,600 lbs.
Power-assisted hydraulic front & rear disc brakes
4-wheel anti-lock brake system
240 Amp Alternator
Dual, maintenance-free batteries
55 Gallon Fuel Tank
Power steering with tilt wheel
Front coil springs
Rear multi-leaf, 2-stage rear springs
HD gas shock absorbers
Front & rear stabilizer bars
LT225/75Rx16E All Season Tires
Dual rear wheels
Cruise control
Driver sun visor
OEM chassis dash heater, A/C, and defroster
Chrome front bumper

Body

Elkhart Coach EC II 25' body
Pre-painted white aluminum sidewalls and skirts
Fiberglass front and rear caps
One-piece seamless FRP roof
65K BTU rear A/C system
FRP interior walls & ceiling
Coved flooring on sidewall to seat track
Altro flooring - 2.2mm
Yellow step nosing
3/4" plywood floor
Tectyl 127CG undercoating
Fuel tank access plate in floor
Driver running board
Rear tow hooks
Heated/Remote-controlled side mirrors with integrated turn signals
Rear mud flaps
65K BTU rear heater
Defroster fan
Window ajar alarms for egress windows
Stainless steel battery box & tray
Rotary disconnect switch
Hourmeter
LED interior and exterior lights
7" amber LED flashers in rear cap (work with brake lights)
Center mount brakelight
Midship turn/marker lights
Independent red brake & amber turn signal lights
AM/FM/Blue Tooth radio with four (4) speakers
Electrically actuated passenger entry door with full length glass

Rear emergency door with window
Twin windows on either side of rear door
Stainless steel entry step assembly - includes sides and header
Roof hatch - Transpec 1070 series
Driver coat hook
Overhead storage above driver/windshield
Ceiling grab rails (both sides of aisle)
Right hand and left hand entry grab rails - parallel to steps
Stanchion and modesty panel aft of entry door
Driver stanchion and modesty panel with upper plexiglas barrier
Freedman Shield FC recliner driver seat
Level 3 seat covers for driver
Mid High rigid passenger seats
Level 3 seat covers for passenger seats
ABS seat backs
Anti-vandal grab handles on aisle seats
Retractable passenger seat belts
Two (2) 12" seat belt extensions

ADA

Double wheelchair doors with gas strut door stays
Rear wheelchair lift (aft of rear axle)
Braun NCL1000 3454-2 wheelchair lift (1,000# capacity)
Intermotive Gateway interlock/fast idle
Two (2) Q'Straint Deluxe retractable securement kits with combo lap/shoulder belt
Two (2) Q'Straint storage pouches
Q'Straint belt cutter

Safety

10 lb. fire extinguisher
16-unit first aid kit
Body fluid kit
Emergency triangle kit
Backup alarm
Interior mirror - 6"x16" flat
Wide angle fresnel lens
Window ajar alarm buzzer on egress windows - indicator light in driver area
Door activated interior lights



OPTIONS

Type 3 Transit Vehicle - Elkhart Coach ECII

Qty	Description	FY 2020 List Price	QTY Total
1	OPT 16 - Bike rack- RED	\$ 2,000.00	\$ 2,000.00
1	OPT 18 - Stop request system	\$ 440.00	\$ 440.00
1	OPT 23 - Back-up camera, OEM if available	\$ -	\$ -
8	OPT 38 - Three-point seat belts	\$ 248.00	\$ 1,984.00
-	Subtotal Manufacturer Options:	\$	\$ 4,424.00



CBS UNPUBLISHED OPTIONS

Type 3 Transit Vehicle - Elkhart Coach ECII

Qty	Description	FY 2020 List Price	QTY Total
1	Raised Floor- Rear WC	\$ 477.00	\$ 477.00
1	Solid Windows- Incl	\$ -	\$ -
1	Transign Front and Side Destination Signs- White LED	\$ 5,575.00	\$ 5,575.00
1	Paint- Black out Windows	\$ 912.00	\$ 912.00
1	Full Body Custom Paint- CARTS 22ft Bus- Oceanside Blue	\$ 7,500.00	\$ 7,500.00
7	Paint- Wheels Silver- 2059	\$ 88.50	\$ 619.50
1	048-009-PA 500	\$ 187.00	\$ 187.00
1	Ambulance Style Cooling Ports on Hood (2)	\$ 112.50	\$ 112.50
1	Group 31 Battery in Box - OEM under Hood	\$ 833.75	\$ 833.75
1	Silicone Heater Hoses	\$ 293.75	\$ 293.75
1	Thermo King SLR 75 with TM 21 Compressor	\$ 12,900.00	\$ 12,900.00
1	Kinneydyne STOP LED Sign on back of bus	\$ 750.00	\$ 750.00
1	Adnik Power Seat Base w/ skirt cover	\$ 442.50	\$ 442.50
1	Delete Stainless Steel Stepwell	\$ (635.00)	\$ (635.00)
1	CWI Digital Bus Camera System- Carts Spec	\$ 3,450.00	\$ 3,450.00
1	Delete Base AC System	\$ (4,600.00)	\$ (4,600.00)
1	Delete Rear Door	\$ (425.00)	\$ (425.00)
1	Delete Twin Windows beside rear door	\$ (150.00)	\$ (150.00)
1	Delete Stainless Steel WC Door Frame	\$ (420.00)	\$ (420.00)
1	Cradle Point WIFI Router Installed- Parts Only	\$ 1,485.00	\$ 1,485.00
1	Drivers Barrier with Installation	\$ 1,099.00	\$ 1,099.00
1	San Marcos- Graphics/wrap Installed	\$ 4,870.00	\$ 4,870.00
Subtotal CBS Unpublished Options:			\$ 35,277.00