


DEPARTMENT UPDATE





Table Of Content

- What Is Public Health
This sentence contains information related to the title
 - Department Updates
This sentence contains information related to the title
 - Community Health Assessment and Improvement Plan
This sentence contains information related to the title
 - Mission, Vision, and Value Statements
This sentence contains information related to the title
 - Strategic Plan and Implementation
This sentence contains information related to the title
 - Conclusion
This sentence contains information related to the title
- 

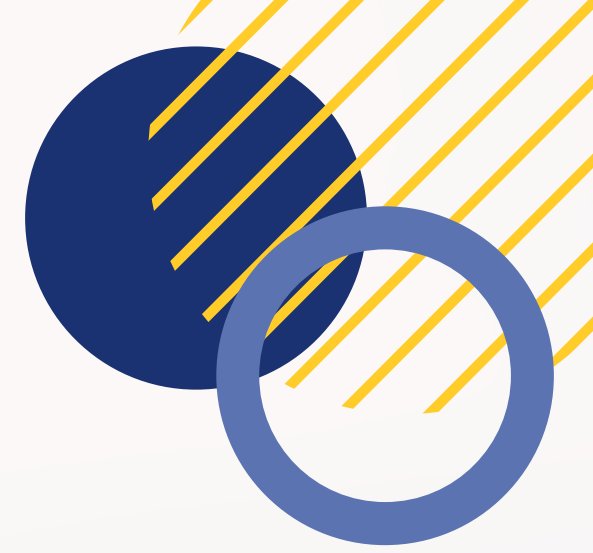
What is Public Health?



- Public health is the science and art of preventing disease, prolonging life, and promoting health through the organized efforts and informed choices of society, organizations, public and private communities, and individuals through the organized efforts and informed choices of society, organizations, public and private communities, and individuals .
 - Targets multiple dimensions of well-being



Core Functions of Public Health



Assessment

Monitoring health status to identify community health problems.

Example: Conducting surveys and data analysis

Policy Development

Developing policies and plans that support individual and community health efforts.

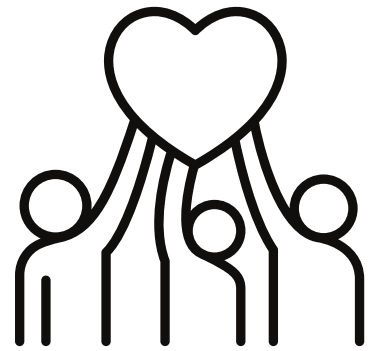
Example: Implementing smoking bans

Assurance

Ensuring that essential community-oriented health services are available.

Example: Providing vaccinations and screening services.

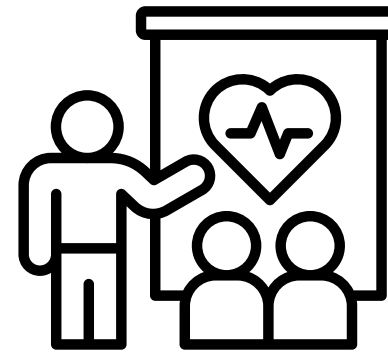
Essential Public Health Services



Monitor Health



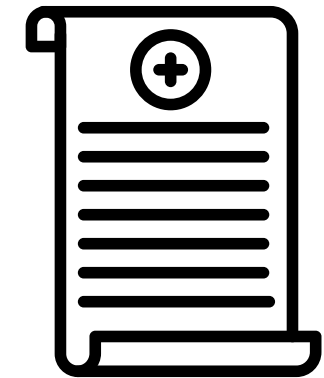
Diagnose and Investigate



Inform, Educate, and Empower



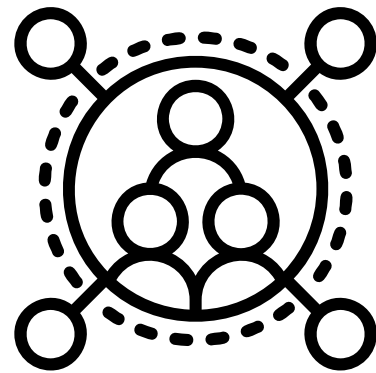
Mobilize Community Partnerships



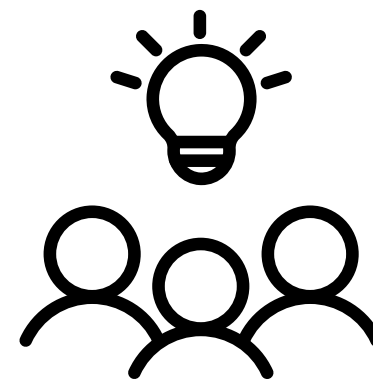
Develop Policies



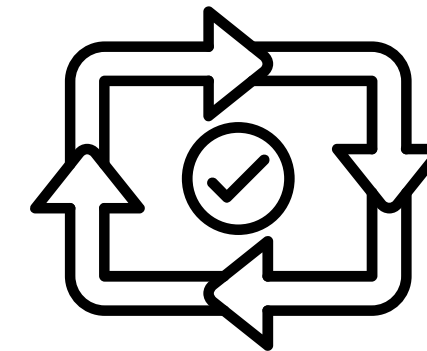
Enforce Laws



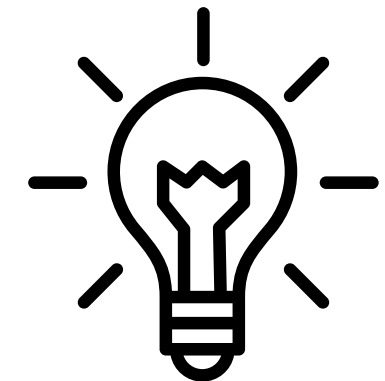
Service Linkage



Assure Workforce



Evaluate



Research



Why Public Health Matters to Our Community

Preparedness

Ensuring readiness for natural and man-made disasters

Prevention

Preventing disease or injury before it occurs

Health Equity

Ensuring all community members have access to health resources

Community Well-Being

Promoting healthy lifestyles and environments

Economic Benefits

Reducing healthcare costs through preventive measures

Why Public Health Matters to Our Community



Negative Impacts

School

- Learning Loss
- Remote Learning Challenges

Mental Health

- Increased Anxiety, Depression, and Loneliness

Healthcare

- Strain on Healthcare Systems

Economy

- Economic Downturn

Why Public Health Matters to Our Community



Negative Impacts

School

- Increased Hygiene
- Increased

Mental Health

- Expansion of Telehealth
- Greater Public Health Awareness

Healthcare

- Vaccine Development and Distribution
- Acceleration of Telemedicine

Economy

- Shifts in workplace measures

Health Department Challenges During COVID-19

- Clarifying Roles and Lines of Authority
 - Decision making
 - Federal leadership
 - Consistent messaging
- Addressing Systemic Health Inequities
 - Vulnerable populations
 - Social needs support
- Data Sharing & Technology Platforms
 - Public health and care delivery
 - Case reporting and surveillance

- Funding Gaps for Foundational Needs
 - Temporary funding
 - Investment in health departments
- Leadership & Workforce
 - Support from officials
 - Temporary hires and training
 - Chief Health Strategist
- Partnerships & Community Engagement
 - Cross-sector partnerships
 - Community partnerships



About Hays County Health Department

Establishment of Hays County Health Department

- The Hays County Health Department was formed in 1961 as a partnership between the Hays County and the City of San Marcos.
 - The Health Department was responsible for clinical services, environmental health services, vital records, and more. The Health Department grew to have over 3 locations in San Marcos, Kyle, and Wimberley with the plans to expand to Dripping Springs.
- In 1991 the City of San Marcos and Hays County Health Department partnership was disbanded. As a result Hays County became the sole responsible party for the Health Department.
 - As a result of the reduction in funding the Health Department closed its Wimberley clinic and only maintained clinics in San Marcos and Kyle.
 - The county's environmental health moved to Development Services.
- In 2013 CTMC (now Christus) took over the Health Department San Marcos Clinic.
- In 2023 the Hays County Health Department moved to 101 Therm on Drive, San Marcos, Texas 78666.
 - The Health Department became responsible for immunizations and began providing STI treatment services.



Core Services

The Hays County Health Department provides:

- Vaccinations to TVFC and ASN eligible populations
- TB Screening and Treatment
- Indigent Healthcare Administration
- Infectious Disease Epidemiology
- Public Health Emergency Preparedness and Response
- Vector Control/Management



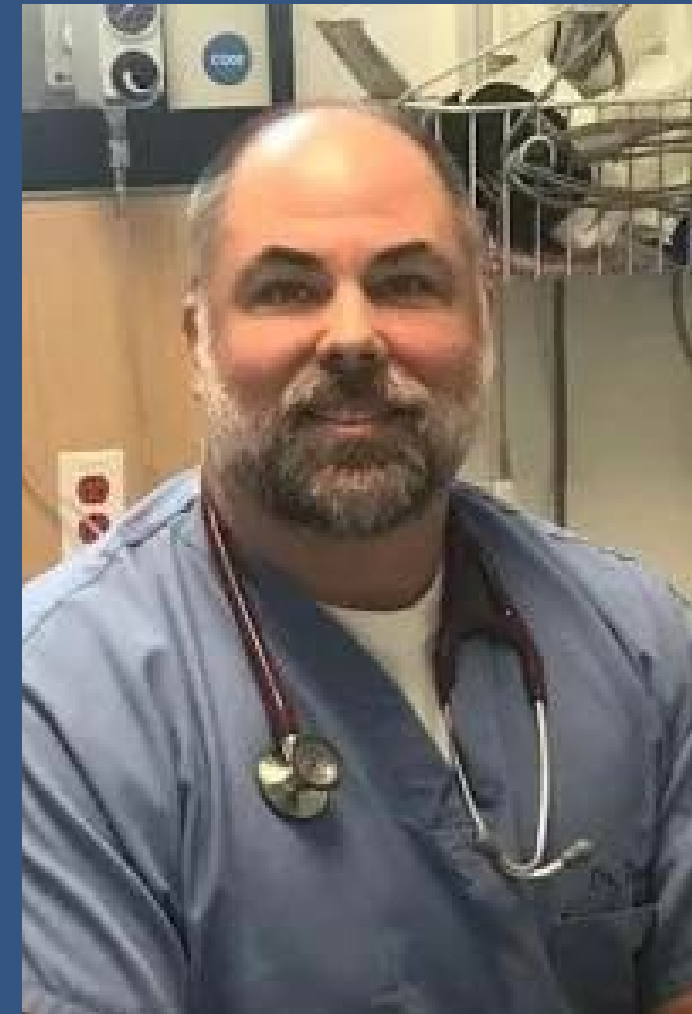
LEADERSHIP



Director
Tammy Crumley



Department
Manager
Matthew Gonzales, MHA



Local Health
Authority
Dr. John Turner, MD



FY 2021 Budget



Grants

\$945,190

- 018 - DSHS Immunizations: \$281,201
- 019 - DSHS RLSS Local Public Health: \$76,551
- 022 - DSHS TB Program - State: \$35,992
- 058 - DSHS Bioterrorism: \$137,629
- 087 - DSHS TB Program - Federal: \$33,569
- 094 - DSHS Infect Disease Contrl/SUREB: \$85,212
- 123 - DSHS 1st Responder Immunizations: \$12,133
- 132 - DSHS COVID-19 Response: \$282,903

Operating

\$2,285,493

- Indigent Health Care Contract:
\$2,000,000

Health Department Total

\$3,230,683



FY 2022 Budget



Grants

\$1,662,255

- 018 - DSHS Immunizations: \$286,375
- 019 - DSHS RLSS Local Public Health: \$90,854
- 022 - DSHS TB Program - State: \$35,888
- 058 - DSHS Bioterrorism: \$127,749
- 087 - DSHS TB Program - Federal: \$36,512
- 094 - DSHS Infect Disease Contrl/SUREB: \$85,374
- 139 - DSHS COVID-19 EPI: \$129,721
- 148 - DSHS Imm/Locals Covid-19: \$39,782
- 151 - St. David's Foundation Covid-19: \$100,000
- 154 - DSHS Public Health Workforce: \$330,000
- 155 - DSHS COVID-19 Health Disparities: \$400,000

Operating

\$2,447,481

- Indigent Health Care Contract: \$2,000,000

Health Department Total

\$4,109,736



FY 2023 Budget



Grants

\$1,695,628

- 018 - DSHS Immunizations: \$300,680
- 019 - DSHS RLSS Local Public Health: \$94,870
- 022 - DSHS TB Program - State: \$44,686
- 058 - DSHS CPS/Hazards: \$141,884
- 087 - DSHS TB Program - Federal: \$32,311
- 094 - DSHS Infect Disease Contrl/SUREB: \$86,983
- 132 - DSHS CPS COVID-19 Response: \$43,938
- 139 - DSHS IDCU COVID-19 EPI: \$129,721
- 151 - St. David's Foundation Covid-19: \$215,000
- 154 - DSHS Public Health Workforce: \$220,000
- 155 - DSHS COVID-19 Health Disparities: \$385,555

Operating

\$2,578,184

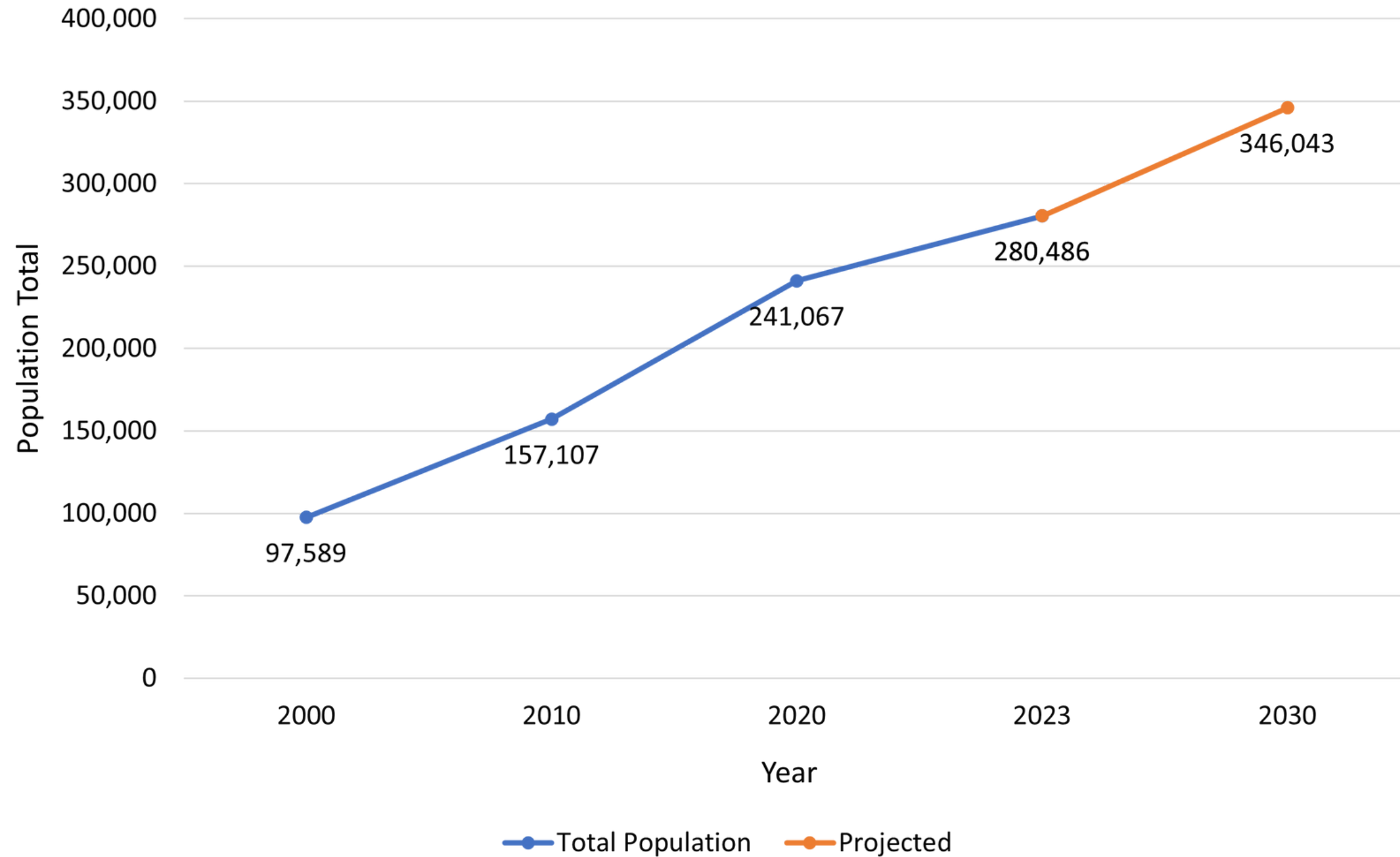
- Indigent Health Care Contract:
\$2,000,000

Health Department Total

\$4,273,812



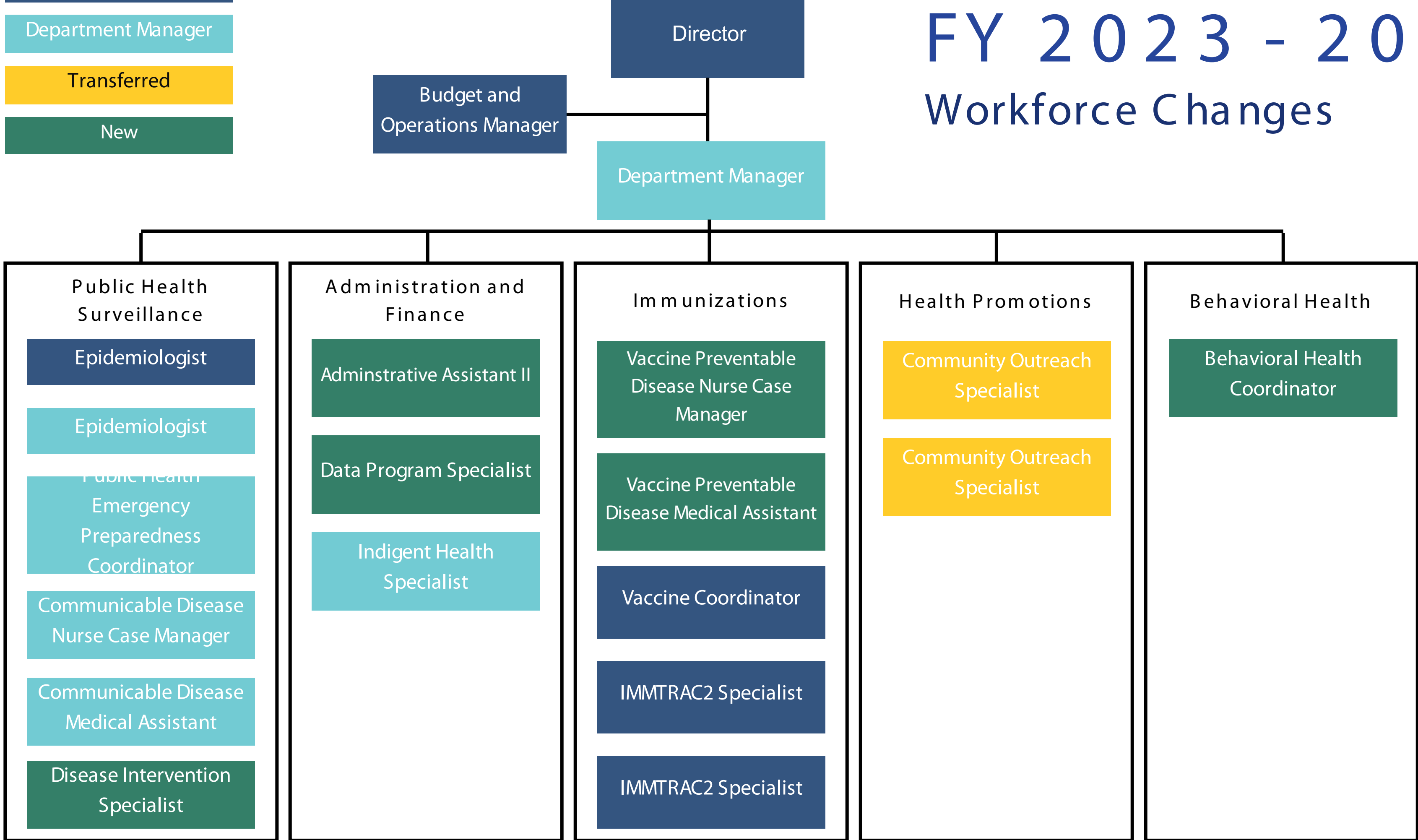
Hays County Population Totals



- Director
- Department Manager
- Transferred
- New

FY 2023 - 2024

Workforce Changes



FY 2023 - 2024

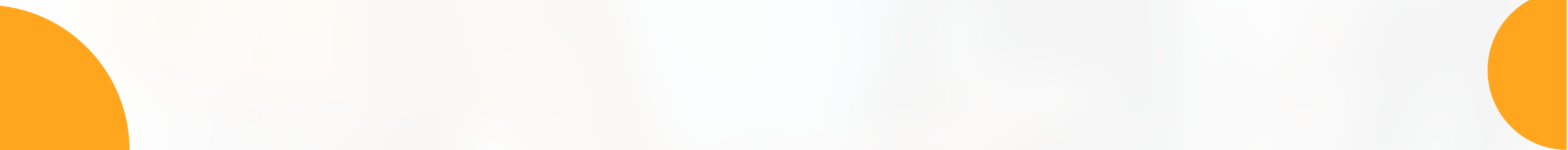
Workforce Changes

- Developed a new employee training packet. That includes public health education for the essential services of public health
- Developed “teams” to improve department coordination towards common public health services
- Increased inhouse staff development trainings
- Requiring the implementation of continuity binders
- Developing new policies and procedures
- Developing a quality improvement plan
- Developing a strategic plan



Community Health Assessment

The CHA offers valuable insights into residents' health, strengths, and challenges by analyzing data on health outcomes, demographics, social determinants, and health behaviors. By identifying community needs, we can plan actionable steps to enhance community well-being and create a healthier and more equitable Hays County.



Vision Statement

WE ENVISION A HAYS COUNTY FULLY COMMITTED to equitable access to resources, where all people are thriving and resilient. We are committed to improving the quality of life in Hays County by collaborating to ensure a system of high quality medical and mental health services, education, employment, and infrastructure is available to all.

Community Status Assessment

Community Status Survey

1.9/5

Public Transit

2.0/5

Affordable Housing

Socioeconomic

12.4%

Poverty Rate

3%

Unemployment

Health Resource Availability

2,343:1

Primary Care

16.9%

Uninsured

Community Status Assessment

Severe Housing Problem

19% Experience Housing Problems

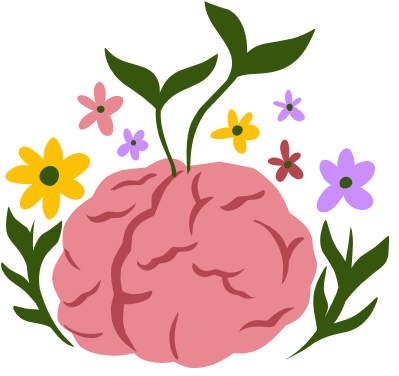
Overcrowding, high housing costs, lack of kitchen facilities, and lack of plumbing facilities

18% Spent Over Half of Income on Housing

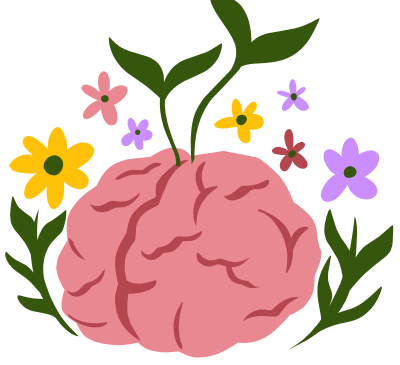
Social Vulnerability Index

SVI: 0.6585

- Medium to high level of vulnerability compared to other US counties
- Areas near San Marcos and Kyle particularly vulnerable
- Aligns with community survey about the cost of living, affordable housing, and transportation as top concerns in Hays.



Mental Health Indicators



Adults

Mental Health Condition	Prevalence (% of population)
Major Depression	15,000 (8%)
Post-Traumatic Stress Disorder	9,000 (5%)
Generalized Anxiety Disorder	6,000 (3%)
Any Substance Use Disorder	20,000 (11%)

Children and Youth

Mental Health Condition	Prevalence (% of population)
Major Depressive Episode (12-17)	3,000 (15%)
Any Mental Health Condition (6-17)	14,000 (35%)
1 or more Adverse Childhood Experiences	18,000 (46%)
Any Substance Use Disorder	1,000 (5%)



Health Resource Availability



Lower Cancer Screening Rates among Medicare population

- Coloncancer screening - 54.6%
- Mammography screening (65-74) - 33%

Sexually Transmitted Infections

- Increase in gonorrhea (164.8 cases) and syphilis (46.6 cases)

Community Status Survey

- Access to medical care: 3.5/5
 - Dripping Springs: 3.3
- Access to mental health services: 2.7



What We Can Do!



Conduct Vital Community Outreach and Education

Provide Mobile Vaccination and STI Exams for your community

Provide Guidance on Public Health Matters

Lead Health and Human Service Grant Opportunities





What Can You Do?



Create and Utilize Meaningful Partnerships

Request Presence and Services

Amplify our Messaging

Provide Funds for Special Projects





THANK YOU

