



Adoption of Flood Maps

Flood Damage Prevention Ordinance Amendment

December 17, 2024

Where It Started



- **2014** – City participated in updating models and studies with Guadalupe Blanco River Authority (GBRA)
- **2015** – Memorial Day Flood,
 - Federal Emergency Management Agency (FEMA) takes the lead in furthering these studies to updating the Flood Insurance Rate Maps (FIRMs),
 - Advisory Flood Data released
- **2017** – Draft Preliminary Maps Released
- **2018** – *Atlas 14 Released*
- **2019** – Physical Map Revision Released
- **2024** – Final Maps issued for adoption, effective FEMA date 1/17/2025

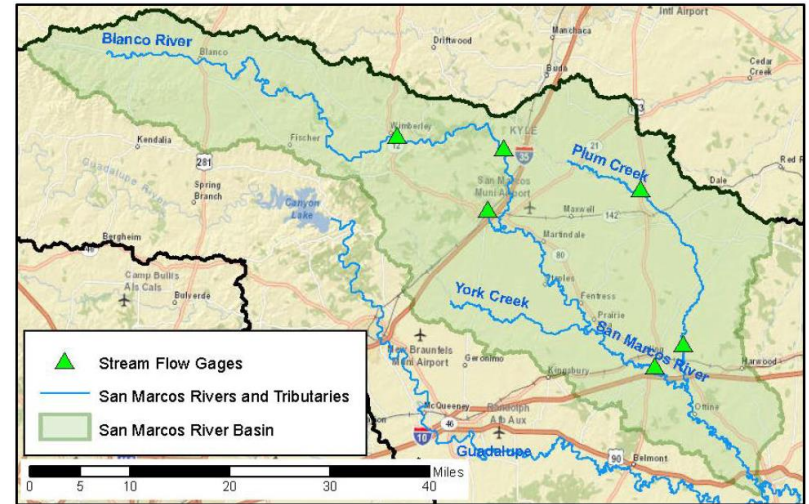
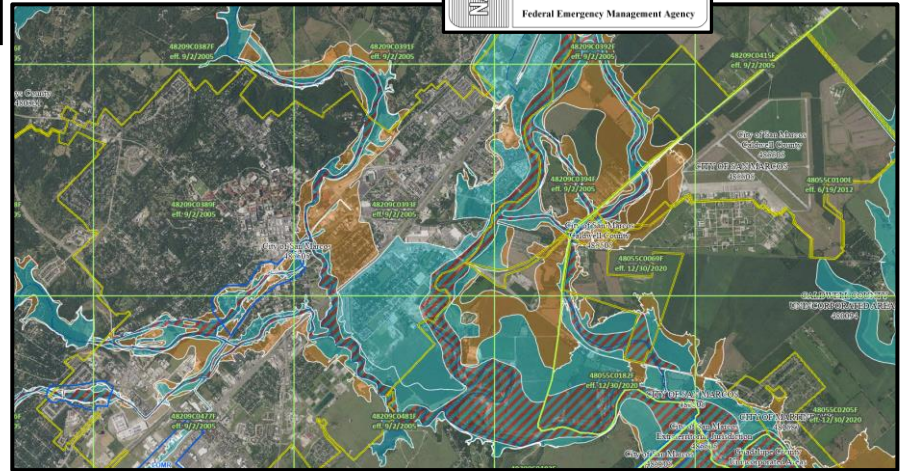


Figure 2.2: San Marcos River Basin Major Tributaries and Stream Gages

Flood Insurance Rate Maps

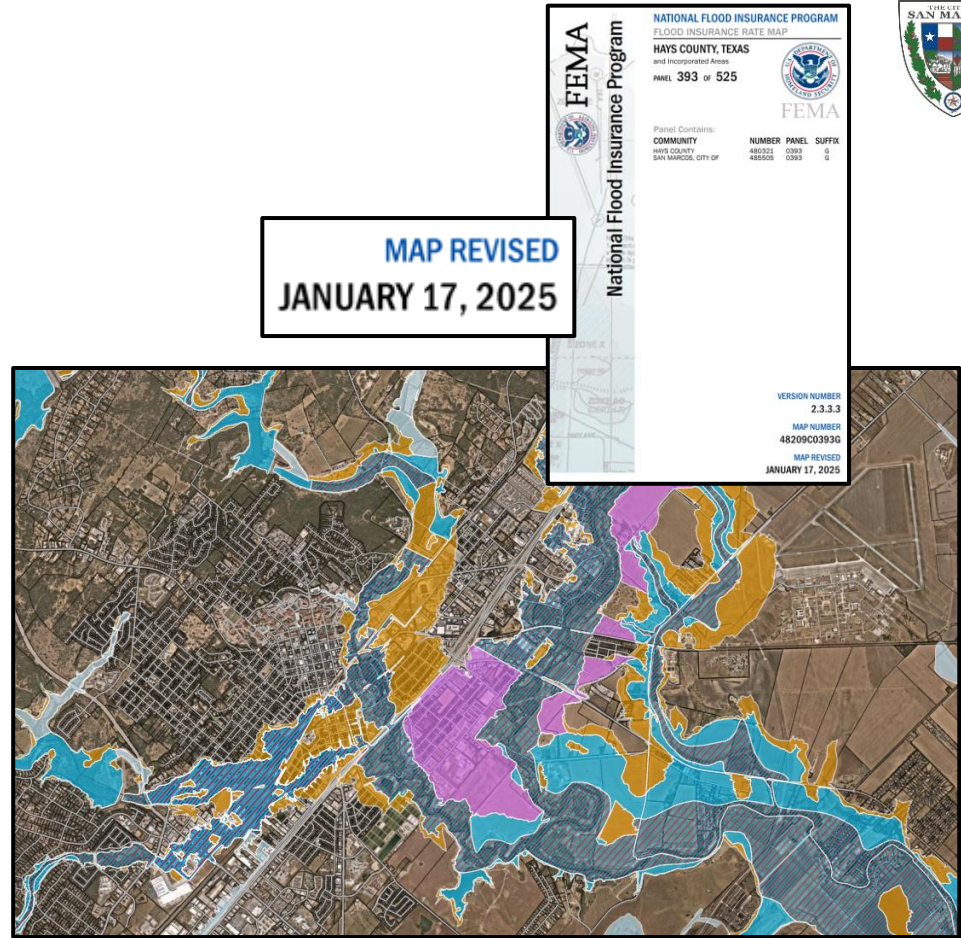
- City's Participation in the National Flood Insurance Program
- Enforcement of Rules and Regulations
- Adoption of Flood Maps



sanmarcostx.gov

What Changed

- 2005 Maps based on 1990 data
- Updated Hydrology and Hydraulic Studies
- Improvements in Modeling

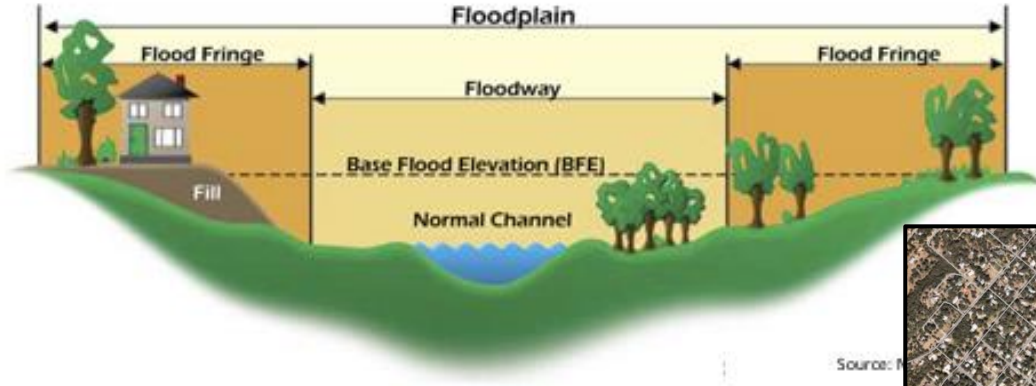


sanmarcostx.gov

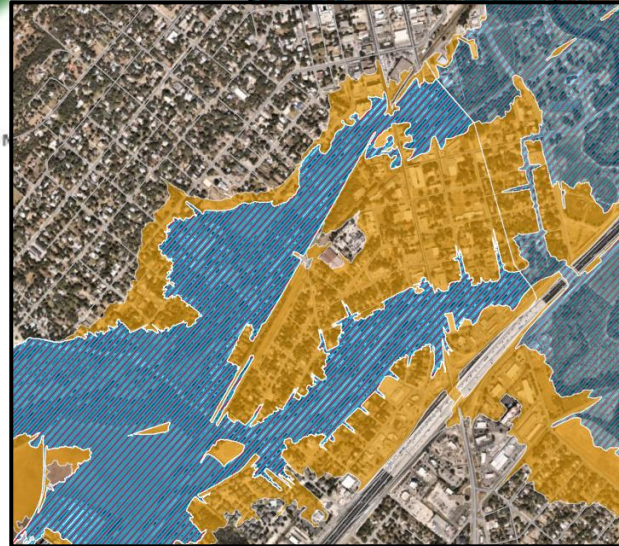
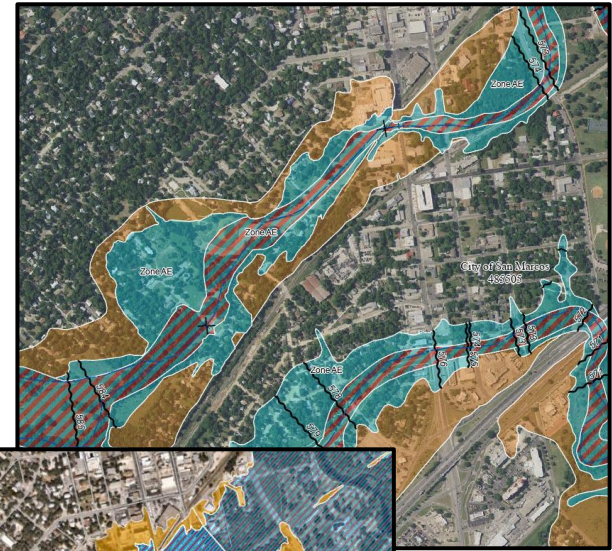
Floodway Changes



Characteristics of a Floodplain



Source: FEMA



Who is Affected?

- Homeowners
- Businesses
- New Developments





Next steps

- **January 7th – 2nd Reading of Ordinance Changes**
- **January 17th – Flood Insurance Rate Maps become effective**
- **Continue to update Studies and Models**
- **Enforce Regulations**