

MASTER PLAN
and
PLANNED DEVELOPMENT DISTRICT STANDARDS FOR



TRACE

Revised October 16, 2015

Section 1:	Intro	
1.1	Goals	6
1.2	Introduction	6
1.3	Project Location	7
	Illustration 1: Vicinity Map	
	Illustration 2: Portion of the Project within City Limits	
	Illustration 3: Base Aerial	
1.4	Existing Property Conditions.....	9
	Illustration 4: Existing Conditions	
	Illustration 5: Slope Map (<i>Located in Appendix</i>)	
	Illustration 6: Topography & Environmental Features (<i>Located in Appendix</i>)	
Section 2:	Concept Plan	
	Illustration 7: Concept Zoning Plan	
2.1	General Land Use Designations	10
2.1.1	PD-SF Single Family	10
2.1.2	PD-MF Multi Family	11
2.1.3	PD-NC Neighborhood Commercial	12
2.1.4	PD-CC Community Commercial	12
2.1.5	PD-GC General Commercial	12
2.1.6	PD-P Public	12
2.2	Phasing	13
	Illustration 8: Phasing Plan	
Section 3:	Public Space	
3.1	Open Space	15
	Illustration 9: Concept Plan Open Space	
3.2	Parkland Dedication.....	17
	Illustration 10: Open Space Not Eligible for Parkland Dedication	
	Illustration 11: Parkland for Dedication	
3.3	Open Space & Parks Programming.....	19
	Illustration 12: Open Space and Parks Programming Plan	
3.3.1	Public Central Park.....	21
3.3.2	Pocket Parks.....	22
	Illustration 13: Typical Pocket Park	
3.3.3	Open Space Trails and Boulevard Trails.....	23
3.3.4	Parkland and Open Space Walking Distance.....	23
	Illustration 14: Property within ¼ mile of Open Space or Parks	
3.3.5	Parkland and Open Space Maintenance.....	24
	Illustration 15: Landscape Maintenance Plan	
3.4	Elementary School	24

Section 4	Circulation and Connectivity	
	Illustration 16: Vehicle Circulation Plan	
	Roadway Design Standard Table	
	Illustration 17: Pedestrian Sidewalk/ Bicycle Circulation Plan	
4.1	Street Section Design	28
	Illustration 19: Enhanced Residential Street ROW	
	Illustration 20: Enhanced Residential Street at Central Park	
	Illustration 21: Enhanced Residential Street at School	
	Illustration 22: Enhanced ROW Section AA	
	Illustration 23: Plan View Section AA	
	Illustration 24: Typical Intersection at ROW Section AA	
	Illustration 25: Enhanced ROW Section BB	
	Illustration 26: Roundabout Plan View and Typical Future Bus Stop Plan	
	Illustration 27: Enhanced ROW Section CC	
	Illustration 28: Plan View ROW Section CC	
	Illustration 29: Typical Intersection at ROW Section CC	
	Illustration 30: Enhanced ROW Section DD	
	Illustration 31: Enhanced ROW Section EE	
4.2	Cul-De-Sacs	35
	Illustration 32: Typical Cul de Sacs and Alleys	
4.3	Alleys.....	35
4.4	Block Lengths.....	36
4.5	Horizontal Alignment	36
4.6	Street Trees	36
4.7	Bio-Swales	36
	Illustration 33: Bio Swale and Typical Ribbon Curb	
Section 5	Site Design	
5.1	Dimensional and Lot Standards	38
	Illustration 34: Typical Lot Layouts SF-6: 50'; 60' and 70' wide lots	
	Illustration 35: Typical Lot Layouts SF-4.5; SF-Alley Loaded 32'and SF-Alley Loaded 40'	
	Illustration 36: Typical Lot Layouts Townhome and Patio Home-Zero Lot Line	
5.2	Site Design.....	42
	Illustration 37: Areas where Houses May Back Up to a Public Street	
Section 6:	Architectural Design	
6.1	Single Family Residential	43
6.1.1	Variation	43
6.1.2	Form & Scale	43
6.1.3	Roof Design.....	44
6.1.4	Porches.....	45
6.1.5	Materials & Color	46
6.1.6	Garages, Pool Equipment, Trash containers, Misc. Accessory Structures	46
6.2	Multi Family Residential.....	47
6.2.1	Variation	47
6.2.2	Building Design	47

6.2.3	Roof Design.....	47
6.2.4	Lighting.....	47
6.3.5	Miscellaneous.....	47
6.3	Commercial.....	47
6.3.1	Orientation.....	47
	Illustration 38: Allowable Commercial Orientation	
6.3.2	Form & Scale	48
6.3.3	Roof Form	49
6.3.4	Entries.....	49
6.3.5	Materials.....	49
6.3.6	Exterior Site Design Requirements for Commercial Areas.....	49
6.3.7	Lighting for Commercial Areas.....	50
6.3.8	Detention Location and Design for Commercial Areas	50
6.3.9	Refuse and Recycling Dumpsters for Commercial Areas	50
Section 7:	Parking and Access	
7.1	Design	50
7.2	Access	51
Section 8:	Screening and Fencing	
8.1	Service and Loading Area Screening	51
8.2	Mechanical Equipment Screening for Commercial Areas	51
8.3	Parking Area Screening	51
8.4	I-35 Frontage Screening.....	51
8.5	Other Screening	52
8.6	Refuse and Recycling Dumpsters Screening for Commercial Areas.....	52
Section 9:	Landscaping and Environmental	
9.1	Landscape Standards.....	52
9.1.1	Street Trees.....	52
9.1.2	Parking Lot Trees	53
9.1.3	Median Landscaping.....	53
9.1.4	Single Family Home Landscaping.....	53
9.1.5	Enhanced Landscaping Features	53
9.2	Environmental Standards	54
9.2.1	Xeriscaping	54
9.2.2	Plant Palette.....	54
9.2.3	Erosion Control/Water Quality Benefits from Detention Ponds	53
	Illustration 39: Water Quality / Stream Setback	
Section 10:	Lighting	
10.1	Street Lighting	55
10.2	Non-Street Lighting	55

Section 11	Signage	
	Illustration 40: Entry Monument and Signage Plan	
11.1	Entry Monuments	56
11.1.1	Major Entry Monumentation (Ma).....	57
11.1.2	Minor Entry Monumentation (Mi-A).....	58
11.1.3	Minor Entry Monumentation (Mi-B).....	58
11.2	Commercial Signage (C)	59
11.3	Temporary Marketing Signage (C & Mi-A).....	60
11.4	Neighborhood Signage (N)	61
11.5	Parkland Signage (P).....	61
11.6	Directional Signage (D).....	62
11.7	Interpretive Signage (I)	63
11.8	Signage Comparisons	64
Section 12:	Special Standards and Administration	
12.1	Concept Plan Revisions.....	65
12.2	Concept Plat	65
12.3	Residential Sales Office(s).....	65
12.4	Construction Field Office Buildings.....	65
12.5	Temporary Construction Buildings	65
Section 13:	Appendixes	
13.1	Legal Description	67
	Illustration 41: Survey Map	
	Illustration 42: Survey Map Notes	
13.2	Land Use Matrix	73
13.3	Comparison Table variances/enhancements to City Ordinances/Code	80
13.4	List of Illustrations	90
13.5	Applicable Ordinances	91
13.6	Parks Cost Estimate	92
13.7	Sensible Landscaping for Central Texas	93

Section 1: Intro

1.1 Goals

Successful large master planned communities begin with a vision and a set of goals by the land developer. For Trace, these goals are:

- To provide needed housing to the city of San Marcos at a variety of home prices to the entry level, first time home buyer as well as the move up market buyer.
- To deliver a family oriented, kid friendly community.
- To create a community that has both walking and biking access to trails, open space, parks, neighborhood shopping areas and employment areas.
- To create new employment opportunities in the City of San Marcos and allow for easy access to and from those employment centers within Trace.
- To be environmentally sensitive in design and avoid impacts to wetlands, creeks and sensitive drainage areas where ever possible.
- To be water use conservative in landscape design.
- To create a better quality living experience in roadway design.

1.2 Introduction

Trace is a 417.63-acre mixed use development that is situated on the southern edge of the City of San Marcos. This project offers an impressive gateway into the City from the south. An iconic work of art will be visible at the eastern edge of the property to mark the entrance to the community and San Marcos as a whole and the views from the highway will highlight the natural beauty of the landscape. The development is intended to serve as a quality commercial, business and residential community where people may live, work and enjoy enhanced amenities commensurate with a master planned community.

Trace will be composed of a mix of residential, business-park and commercial retail uses, as well as, an abundance of parks and open space. Residential uses include single-family home sites and multi-family communities. The commercial uses include general, community and neighborhood commercial retail. A business park is strategically located adjacent to I-35 and provides a smooth transition between the freeway and residential neighborhoods. Parks and natural open space spread throughout the site buffer natural waterways and provide recreational areas.

A mix of single family housing styles and sizes will be available. The residential area will include one or more multi-family communities that will buffer the business and commercial areas from the single family neighborhoods. Trace will be developed with respect for the existing landscape using the creeks and wetlands as a feature of the residential communities so that the natural beauty of the property remains intact. The community's collector roadways will be built as parkways by separating traffic lanes with tree-lined medians and planting the right of ways with native flowers and shrubs. The planned bike lanes are widened for more-comfortable rides; and swaths of open space run parallel to the roadways allowing trails to sweep through trees and along the creek edges.

An amenity center and elementary school are also planned and will be located in the heart of the community, providing central places to gather, learn, and play. Altogether, Trace adds to the numerous attractions of San Marcos in a way that seems like it has always been part of the city.

1.3 Project Location

Trace is located on the south end of the city of San Marcos and will act as the southern gateway to the City. It is situated south of Posey Road, east of the I-35 freeway, and west of Old Bastrop Highway.

Illustration 1: Vicinity Map

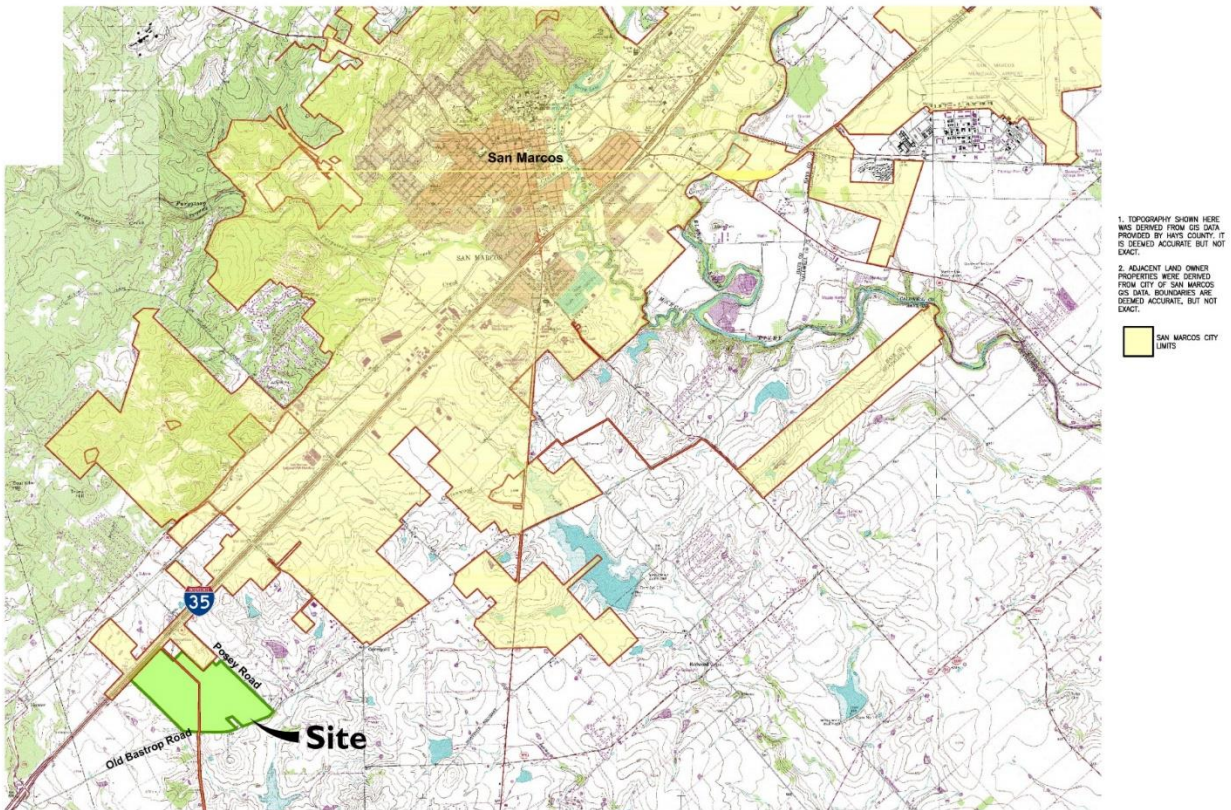
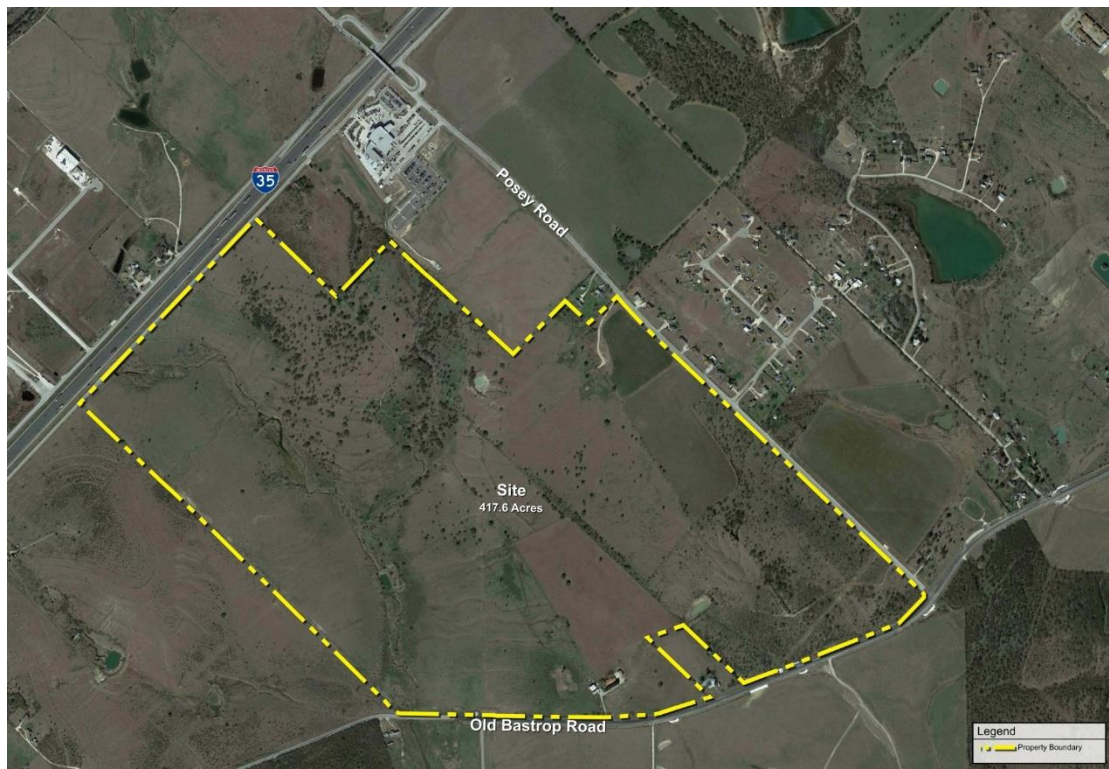


Illustration 2: Portion of the Project within City Limits



Illustration 3: Base Aerial



1.4 Existing Property Conditions

Trace is currently undeveloped agricultural land utilized for grazing and hay production. The property was purchased by its current ownership in 2001 and has been leased to a local rancher since that time. The Trace Development site has been subjected to long term impacts associated with grazing and erosion over time. The property includes two manmade stock ponds, debris piles, agricultural equipment, cattle pens, and one occupied and two abandoned single family residences. There are no paved roads, or other improvements currently on the subject property. A Natural gas pipeline, reclaimed water line and electric line were identified on the subject property. The occupied house contains a septic system; however no sanitary sewers or septic systems were identified near the two abandoned residences. Utilities include overhead electrical power lines with non-PCB pole mounted transformers. Native grasses currently cover most of the subject property.

The property is east of the Edwards Aquifer recharge zone on deep Blackland Prairie soils. The area surrounding the subject property may be generally described as rural, transitioning to suburban. Nearby properties have been recently developed along the east side of Posey Road as well as several homes northwest of the subject property. The San Marcos Toyota car dealership, located on the southwest corner of Posey Road and IH 35, is the only commercial property on the east side of IH 35 in the surrounding area. The surrounding land is utilized for grazing and hay production or is open, unmaintained land. The San Pedro Cemetery is located at the northwest corner of the Posey Road and S Old Bastrop Highway intersection.

Illustration 4: Existing Conditions

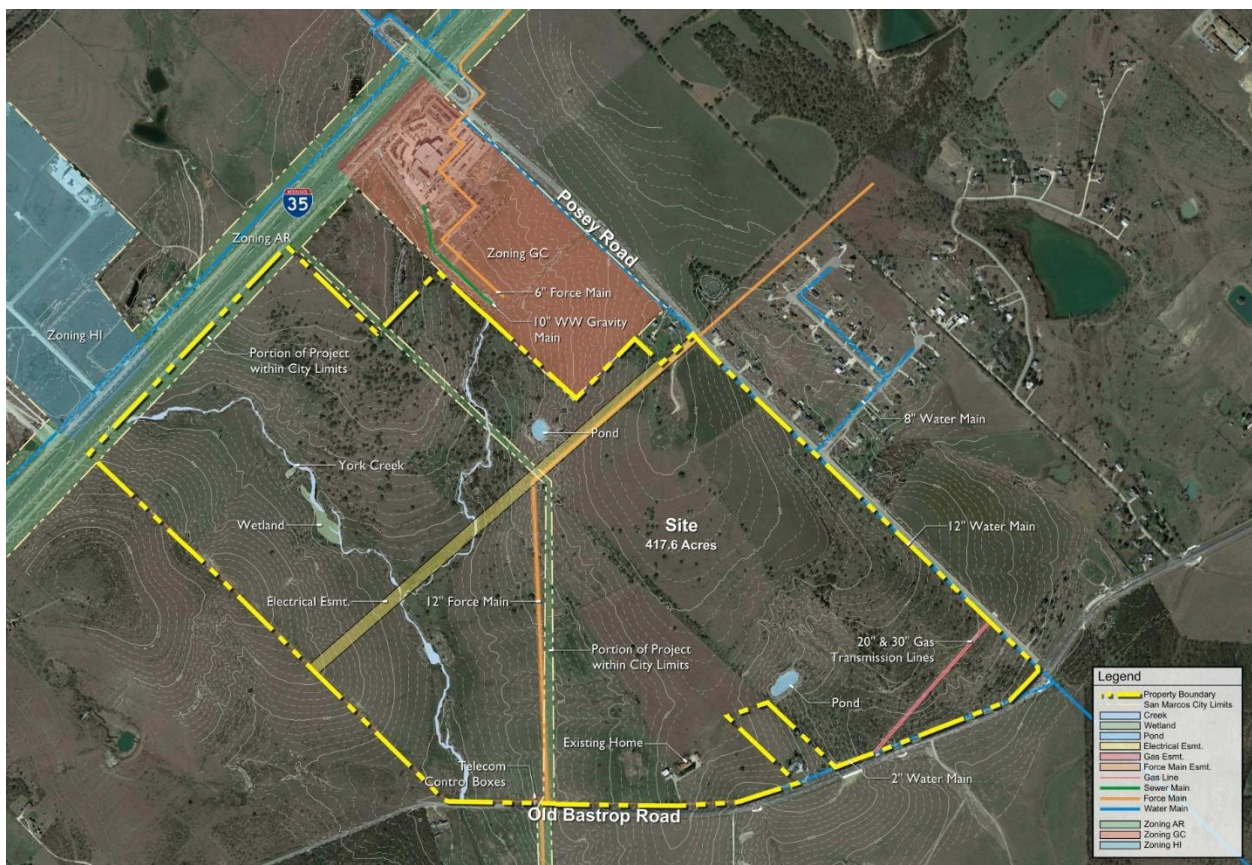
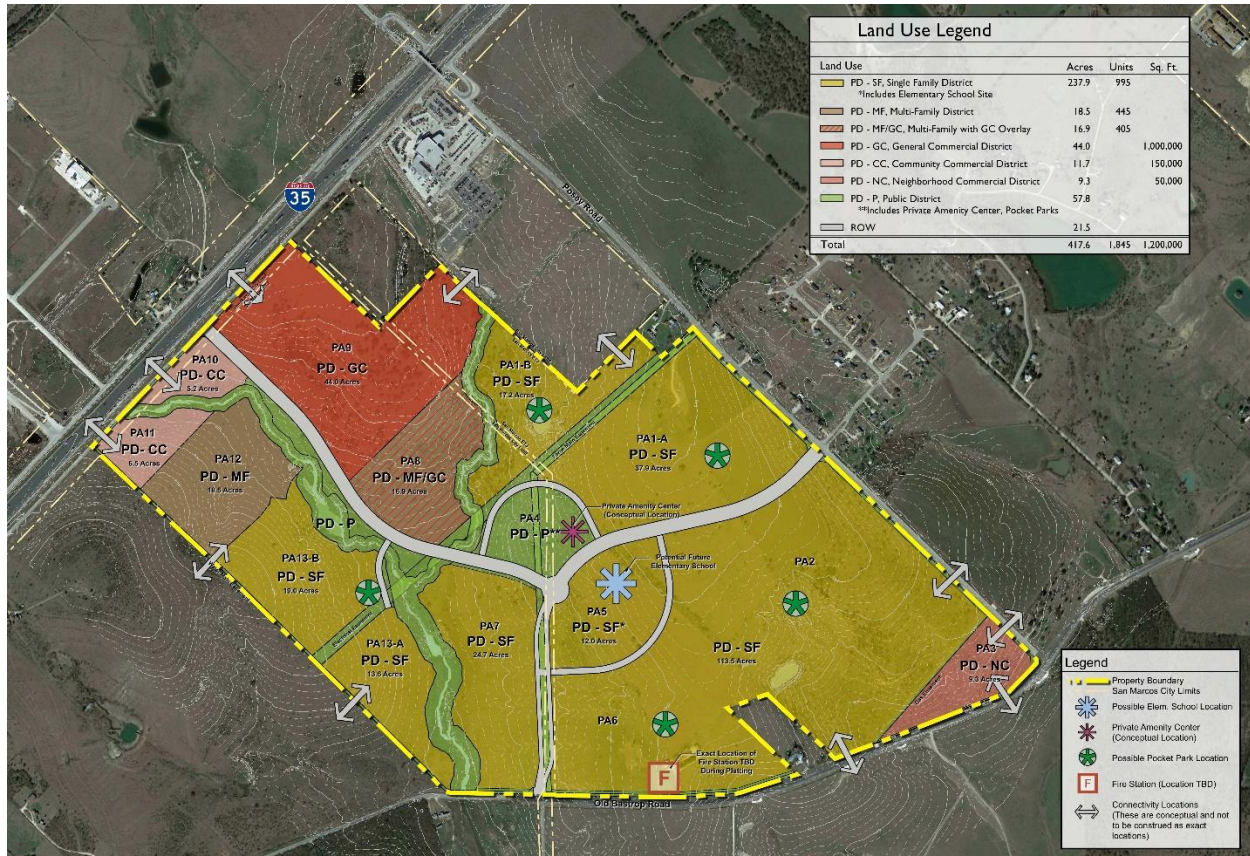


Illustration 5: Slope Map (Located in the Appendix)

Illustration 6: Topography & Environmental Features (Located in the Appendix)

Section 2: Concept Plan

Illustration 7: Concept Zoning Plan



2.1 General Land Use Designations

2.1.1 PD-SF Single Family

Trace contains 237.9 acres of single family residential uses. The community allows for a mix of Single-Family type lots in a variety of sizes and configurations in order to achieve a high quality master planned community. These single family uses would be designed within the SF 6 criteria of the City of San Marcos zoning regulations and would include 50' wide lots to achieve a 6,000 SF lot; 60' wide lots to achieve a 7,200 SF lot; and 70' wide lots to achieve a 8,400 SF lot. Varying lot sizes would be utilized in different neighborhoods and configurations to achieve a variety of housing types at different price ranges.

Trace would also offer small lots in the range from 2,500 SF to 4,500 SF both as attached and detached units. These lots would be designed similar to the SF 4.5, D, TH and PH-ZL criteria

of the City of San Marcos zoning regulations but shall be alley loaded. Attached garages and detached garages could be utilized in this range of lots. Townhome type housing could be designed within the Trace Planned Development District.

Maximum densities for each Planning Area are shown in the table below. Each Planning Area could have any of the lotting types as addressed in this table.

Planning Area	Acreage	% of Residential Acreage	Types of lots	Max Density units/acre	Maximum allowable Units
1A	37.9	16%	32' or 40' Alley loaded; 50' wide traditional front loaded lots; townhouse units.	6.0	227
1B	17.2	7%	32' or 40' Alley loaded; 50' wide traditional front loaded lots; townhouse units.	6.0	103
2 / 6 Fire Station Site	113.5	48%	32' or 40' Alley loaded; 50' wide traditional lots; 60' wide traditional lots; 70' wide traditional lots.	5.0	568
School Site	12.0	5%	32' or 40' Alley loaded; 50' wide traditional lots; 60' wide traditional lots; 70' wide traditional lots.	5.0	60
7	24.7	10%	32' or 40' Alley-loaded; 50' wide traditional lots or alley loaded; 60' wide traditional lots; 70' wide traditional lots.	5.0	124
13 A	13.6	6%	50' wide traditional lots; 60' wide traditional lots; 70' wide traditional lots.	4.0	54
13 B	19.00	8%	50' wide traditional lots; 60' wide traditional lots; 70' wide traditional lots.	4.0	76
Totals	237.9 acres	100%		5.36 Avg. DU/AC	1,212

This table provides for up to a maximum of 1,212 single family units. Due to site constraints, open space and parks, however, there is currently planned to be 995 single family units constructed. No more than 30% of those single family homes will be of the smaller lot configuration which includes the 32' and 40' wide Alley-loaded lots. If the school site is not accepted by the San Marcos Consolidated Independent School District then the school site could have a maximum of 60 lots. Further discussion of this is located under Section 3.1. In addition, a Fire Station will be located within Planning Area 6 as indicated in Illustration 7: Concept Zoning Plan.

2.1.2 PD-MF & PD-MF/GC Multi Family

Trace has 35.4 acres of multi-family use. The Multiple-Family Residential District in Planning Areas 8 and 12 is intended for development of multiple-family, for sale or market rate for rent residences not to exceed more than 24 units per acre. This Multi-Family Residential District shall not have "rent by the room" apartments. This district will serve as a buffer between low or medium density residential development and the nonresidential development. Planning Area 8 shall have the ability to expand the GC District as identified in the PD-MF/GC land use matrix within Section 13.2.

2.1.3 PD-NC Neighborhood Commercial

The Neighborhood Commercial District encompasses 9.3 acres and is established to provide low intensity office, retail and service facilities for the local neighborhood area. These uses shall be compatible with residential uses in the neighborhood. A Neighborhood Commercial area within Trace is conveniently located at the intersection of Posey Road and Old Bastrop Highway. It is divided from the residential uses by a 50' wide gas pipeline easement which will be landscaped and screened. Enhanced architectural guidelines for this area are discussed in Section 6.3 Commercial. Except as otherwise provided herein, this district will comply with the Neighborhood Commercial (NC) criteria of the City of San Marcos Zoning Regulations.

2.1.4 PD-CC Community Commercial

The Community Commercial District contains a total of 11.7 acres and is established to provide areas for quality larger general retail establishments and service facilities for the retail sale of goods and services. This district should generally consist of retail nodes located along or at the intersection of major collectors or thoroughfares to accommodate high traffic volumes generated by general retail uses. The location of this area allows for the retail businesses to serve not only area residents but community residents as well. Enhanced architectural guidelines for this area are discussed in Section 6.3 Commercial. Except as otherwise provided herein, this district will comply with the Community Commercial (CC) criteria of the City of San Marcos Zoning Regulations.

2.1.5 PD-GC General Commercial

The Employment Center/General Commercial District, containing 44 acres, is intended to provide shovel ready opportunities for prospective companies and employers. These could include limited (light) commercial and service-related establishments; clean manufacturing; corporate headquarters; and office park/office building uses. The commercial uses within this district will have operation characteristics that are generally compatible with the Community Commercial District and the Multi-Family residential areas immediately adjacent to this area. Careful consideration of building heights and screening will apply. Enhanced architectural guidelines for this area are discussed in Section 6.3 Commercial. Except as otherwise provided herein, this district will comply with the General Commercial (GC) criteria of the City of San Marcos Zoning Regulations.

2.1.6 PD-P Public

Trace contains approximately 84 acres of open space and parks. The City of San Marcos has determined that recreational areas in the form of public parks and open spaces are necessary for the enjoyment and well-being of residents of the City. The City has further determined that a reasonable connection exists between the subdivision of residential property and the need for additional parkland to serve new residents of the community. Open Space and Parks and Trails are discussed in more detail in Section 3.

2.2 Phasing

The project will be developed in a series of phases as described below.

- In addition to other applicable health and safety ordinance requirements, each phase will be required to meet Emergency Access requirements at all stages of development as defined by the International Fire Code.
- Unless otherwise noted, all City of San Marcos Codes and Procedures shall be complied with for this development.

Development - Phase 1A will begin at the intersection of Posey Road and Road Segment A and will service Planning Areas 1, 2, 3 and the private amenity center of Planning Area 4. In order to provide wastewater services for the two residential planning areas, lift stations A and B located within Planning Areas 2 and 7, will also need to be constructed concurrent with this phase of development. Also, one and one-half miles of off-site force main will need to be constructed from Lift Station B north of the project to connect to an existing wastewater line near the Tanger Outlet Malls on Centerpoint Drive. Planning Areas 1 & 2 will contain single family home sites for merchant builders. Planning Area 3 is a neighborhood retail site and will be subject to market demand but will be “shovel ready” and available for sale in conjunction with the construction of Planning Areas 1 and 2.

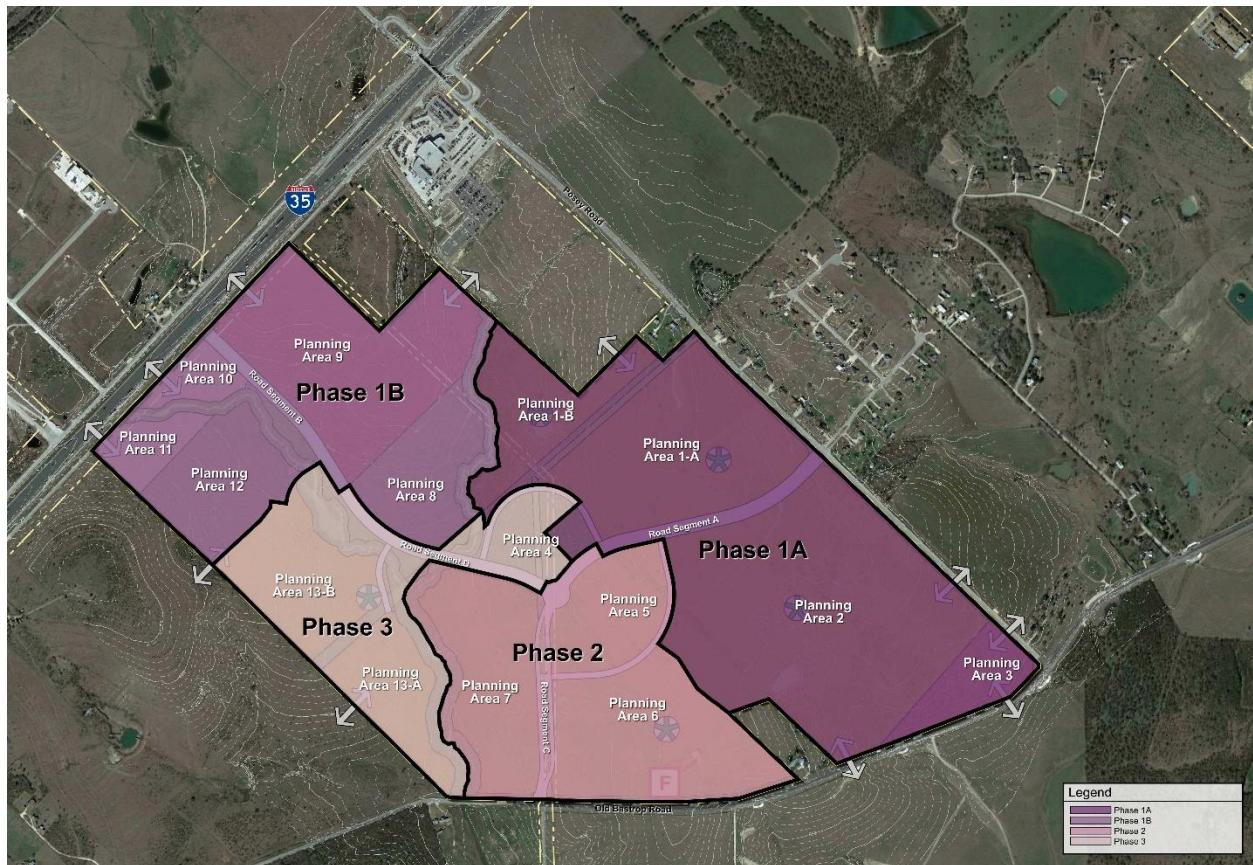
Development - Phase 1B will begin at the intersection of I-35 and Road Segment B and will service Planning Areas 8, 9, 10, 11 and 12. The grading of Phase 1B of development will be commenced almost concurrently with Phase 1A to provide shovel ready properties contingent upon securing buyers / users for the retail, business center or multi-family sites noting that these sites will be available for sale as soon as the water and wastewater facilities are available to serve them. This phase of construction is dependent solely on the development of Phase 1A because the water lines serving Development Phase 1B come from Posey Road, thru Road Segment A, a portion of Road Segment C, Road Segment D, and Road Segment B. These water lines are well over 1 mile in length. Wastewater service cannot be delivered to Development Phase 1B until the Wastewater Lift Station at the southeasternmost corner of the project is fully built and operating. There are over 2.5 miles of force main lines commencing at this lift station and traveling north from the project site to a point near or just north of the Outlet Malls which must also be built prior to delivery of shovel ready properties within Development Phase 1B. Development Phase 1B will require approximately 8/10ths of a mile of gravity sewer line to be built from Development Phase 1B to the lift station located at the southeasternmost corner of the project. Planning Area 9 is a 44 acre general commercial site with a variety of uses allowed and will be for sale subject to securing either a user or developer. Planning Areas 8 and 12 are multi-family sites and will be for sale subject to market demand. Planning Areas 10 & 11 are community commercial sites and will be for sale, subject to market demand.

Development - Phase 2 will then begin at the intersection of Old Bastrop Highway and Road Segment C and will service Planning Areas 5, 6 and 7. Planning Area 5 is an elementary school site and will be donated to, and built by, the local school district when sufficient student demand has occurred. Alternatively, if not developed as a school site, this site will contain additional single family lots. Planning Area 6 is planned for the largest lots in the development, subject to market conditions, and will provide for larger and more expensive homes. The timing of Planning Area 7 will be subject to absorption of homes in Planning Area 1 or 2. In

addition, a Fire Station that will be partially funded by the Trace Development is proposed to be located within Planning Area 6 as indicated in Illustration 7: Concept Zoning Plan. Timing and completion of the proposed Fire Station will coincide with the approved Fire Station agreement.

Development - Phase 3 will complete the internal circulation by constructing Road Segment D which connects all internal road segments including Segments A, B and C and will service the remaining Planning Area 13. The remainder of Planning Area 3 which will contain the public park areas will be completed with this phase.

Illustration 8: Phasing Plan



Section 3 Public Space

The Trace development will include approximately eighty four (84) acres of parks and open space and 2 to 3 miles of trails designed to preserve the natural landscape and create a shared sense of community within the project. A 12 acre school site will also be offered to the school district for development of an elementary school as well as a 3 acre site for the development of a fire station.

3.1 Open Space

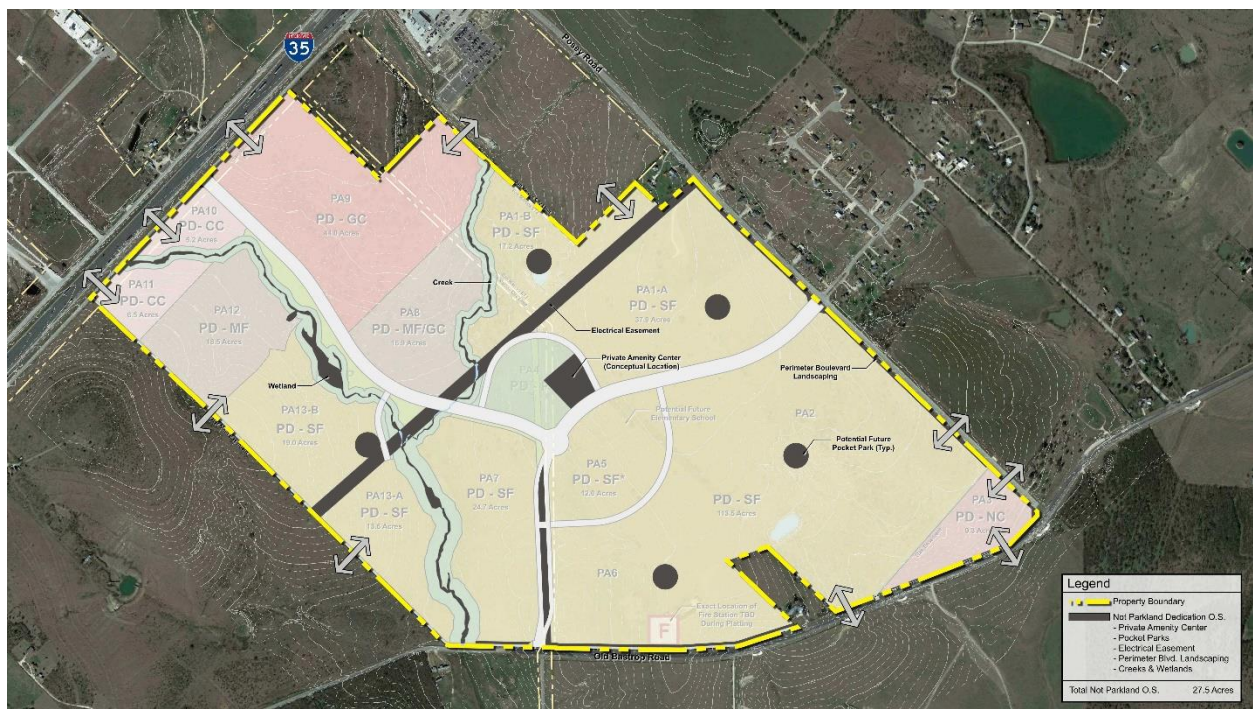
Open Space Requirement - The City of San Marcos' current Land Development Code requires that a minimum of 20 percent of the gross land area within the entire PD district shall be devoted to open space. The Trace project contains 417.63 acres so 20% would be 83.5 acres. Open space for PD districts may be satisfied by either public or by a combination of public and private open space. Public open space shall be dedicated to the City.

Amenity	Total Acres	Open Space Shown on Concept Plan	Area Not Eligible for Parkland Dedication	Area to be Dedicated to City	OS to be Owned & Maintained by HOA	Additional Area Dedicated to City but Maintained by HOA	Total Area Maintained by HOA
Central park / Amenity Cntr:	9.2	9.2	2.0	7.2	2.0		2.0
Pocket parks:	4.7	4.7	4.7	0	4.7		4.7
Electrical easement:	7.9	7.9	7.9	0	7.9		7.9
Boulevard landscaping:	13.1	13.1	9	4.1	9.0	4.1	13.1
Environmental buffer:	22.9	22.9	3.9	19.0	3.9		3.9
Detention basins:	26.4	0	0	0	26.4		26.4
Total Open Space:	84.2	57.8	27.5	30.3	53.9	4.1	58.00
	20.16%			36%	64%		69%

Currently the Concept Zoning Plan submitted with this document shows 57.8 acres of open space within the Trace project. The detention basin open space areas shall be addressed and shown on the subsequent Subdivision Preliminary Plat submittals.

Trace will contain approximately twenty three (23) acres of open space along the existing creeks and wetlands on the property. This greenspace technically provides a water quality buffer for the creeks and wetlands. The installation of supplemental native plants to enhance the visual and functional qualities of these areas will provide Trace with a dual purpose amenity. Approximately thirteen (13) acres of open space flank roadways within the project. These areas will be strategically planted with native and adapted ornamental plant materials to create a framework and transition to the native landscape beyond. The width and quantity of these roadway open spaces shall create opportunities for major trail connections to create pastoral, pleasant experiences for pedestrians and cyclists.

The walkability of Trace enhances the cohesiveness of the community and raises the quality of life for residents. Enhancement such as re-establishment of prairie grasses and other bank stabilizing



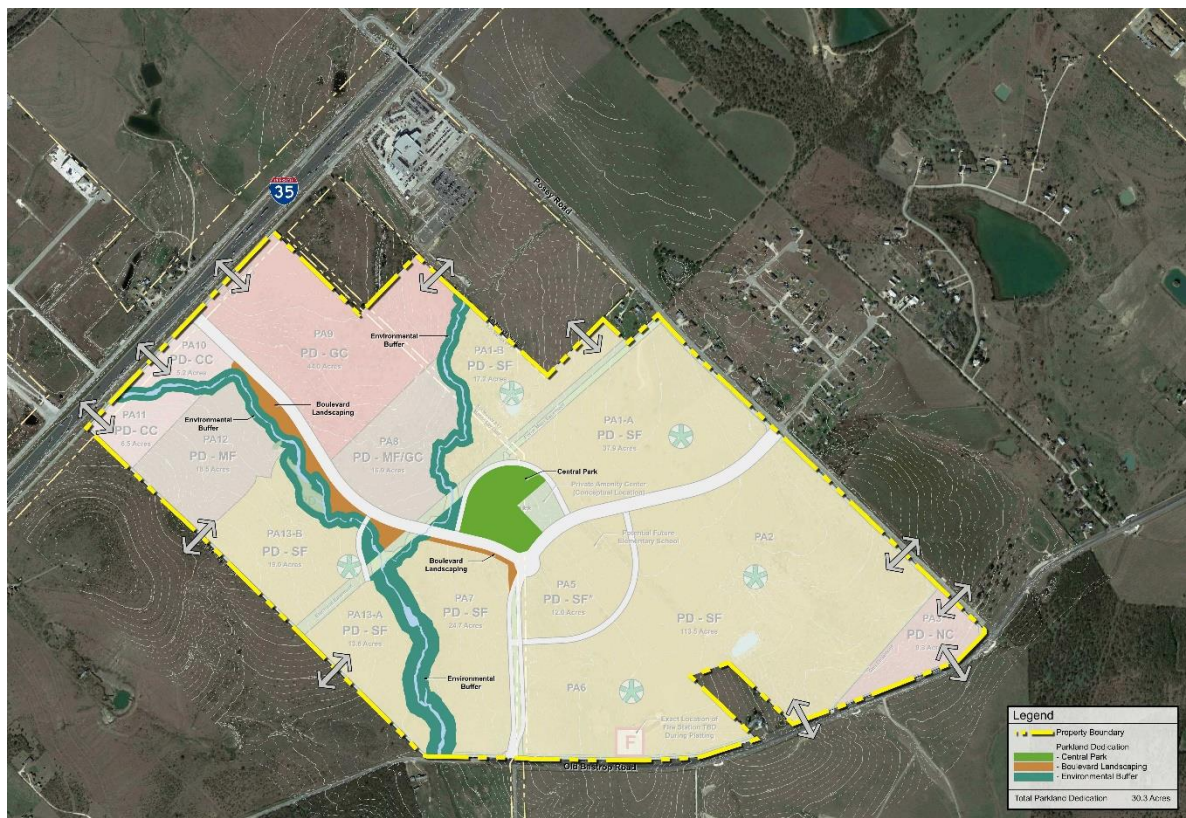
3.2 Parkland Dedication

Standard City Requirements for Parkland - The City of San Marcos Land Development Code requires 5 acres of parkland per 1,000 residents. It requires that 2.7 residents are calculated per single family unit and 2.1 residents are calculated per multi-family unit (based on the maximum allowed units per acre per multi-family zoning designation). Drainage ditches, detention ponds, power line easements and steep slopes are not eligible for dedication but the 100 year flood plain is considered eligible for parkland credit. The calculations below detail the amount of parkland over and above the base requirement which will be dedicated to the City.

Parkland Dedication Requirement Calculations: Based on Concept Zoning Plan dated 07/07/2015

Single-Family:	995 units x 2.7 residents per unit =	2,687 residents
Multi-Family:	850 units x 2.1 residents per unit =	<u>1,785 residents</u>
Total Residents:		4,472 residents
Minimum Parkland requirement:		
4,472 total residents x 5 acres per 1,000 residents =		22.4 acres

Illustration 11: Parkland for Dedication – 30.3 acres



Parkland to be dedicated to the city will total 30.3 acres which is in excess of the City of San Marcos requirement of 22.4 acres.

- Land proposed for dedication as public parkland or open space shall be designated on the final plat for that phase or section of the project.
- Parks and open space improvements shall be constructed and accepted in the same manner as public improvements, prior to final plat recordation or fiscal surety provided in accordance with applicable ordinances, and within the phases identified.
- If the developer intends to provide fiscal surety in-lieu of construction of improvements prior to final plat approval, Design Development Drawings for proposed parks and open space improvements shall be submitted for review at the time of preliminary plat submission in order to determine/verify amount of fiscal surety.
- Cost for construction of parks and open space, both public and private, shall be borne by the developer.
- Typically open space requirements would be satisfied for each phase of a multi-phased residential development, however if open space is not to be provided proportionally among phases of development, the applicant shall execute a reservation of open space in a form that will assure the City that such open space will be provided. All open space within the PDD shall be provided prior to completion of development within the district.
- Parkland shall be easily accessible for the public and open to public view so as to benefit area residents, enhance the visual character of the City, protect public safety and minimize conflicts with adjacent land uses.
- Land dedication for public use and maintenance shall have a minimum of 150 feet of frontage on a Local or Collector Street.
- All public parkland must be accessible and any proposed development adjacent to a public park or open space area shall not restrict reasonable access or visibility into the park.
- All parks will have at least 2-sides visible from public streets and the terrain of Trace is gentle enough that physical accessibility challenges are readily managed.
- Parkland shall be safely accessed by pedestrians, especially children.
- Public parkland and open space shall comply with Land Development Code parking requirements.
- Public parkland and open space land improvements shall be reviewed by the appropriate city staff to approve material selection on surfaces within publicly owned areas.
- Parkland construction documentation shall be required to be reviewed and approved administratively by the City of San Marcos Parks Department and Site and Building permit approvals shall be required by the Planning and Development Services Department.
- No private drainage or storm water detention facilities or amenities not directly serving park purposes shall be permitted in dedicated parkland or open space

3.3 Open Space & Parks Programming

Trace is a relatively compact community; easily walkable with generous amounts of open space and parkland. Because of the compact size of the Community and the central location of the main Amenity Center and School, the park system within Trace will have a variety of experiences to suit the residents and users.

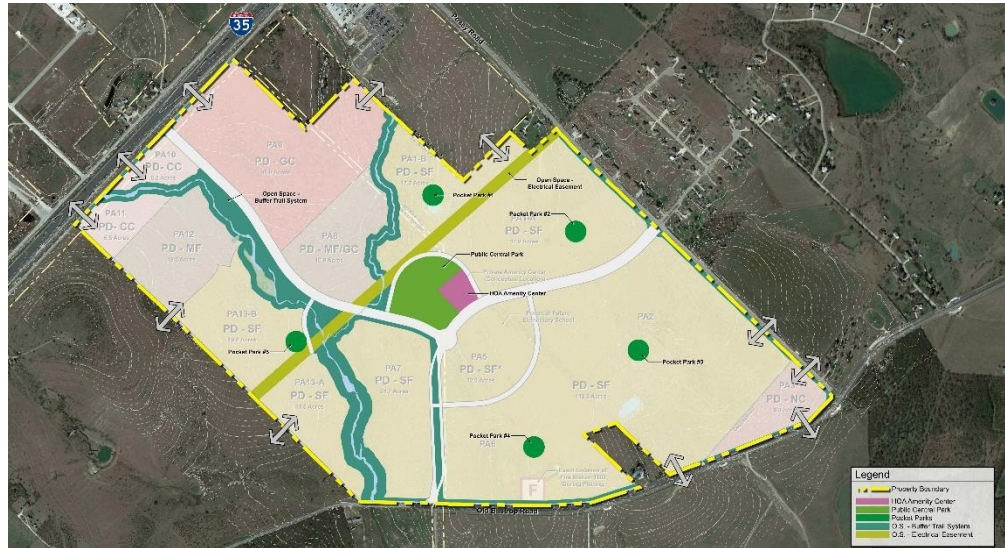


Illustration 12: Open Space and Parks Programming Plan

- Large fields, pools and/or splash pads will be centrally located to give maximum access as well as direct higher traffic volumes to larger roads.
- Internal neighborhood pocket parks will be either un-programmed passive areas for neighborhood gatherings or lightly programmed play areas that may serve the homes furthest from the central activity area. The intent is that pocket parks would allow sufficient outdoor quality of life experiences when time prohibits walking to the central amenity center.

Open Space & Parks Programming Schedule

M Mandatory Improvement

O Allowed Optional Improvement

D Discourage Improvement

Facility	HOA Amenity Center	Public Central Park	Pocket Park #1	Pocket Park #2	Pocket Park #3	Pocket Park #4	Pocket Park #5	Open Space - Buffer Trail System	Open Space - Electrical Easement
Paths/Hike & Bike Trails	M	M	M	O	O	O	O	M	M
Park Identification Signage	M	M	M	M	M	M	M	M	M
Way Finding	M	M	O	O	O	O	O	M	M
Landscaping	M	M	M	M	M	M	M	M	M
Trees	M	M	M	M	M	M	M	M	D
Bike Rack	M	M	M	M	O	O	O	O	D
Seating, 2 benches	M	M	M	M	M	M	M	O	D
Picnic Tables, 2 minimum	M	M	M	M	M	M	M	D	D
Grills	M	M	O	O	O	O	M	D	D
Drinking Fountain	M	M	O	O	O	O	O	D	D
Pet Fountain	M	M	O	O	O	O	O	O	D
Trash Receptacles	M	M	M	M	M	M	M	O	D
Pet Waste Receptacles	M	M	M	M	M	M	M	M	O
Restrooms	M	M	D	D	D	D	D	D	D
Playscape	M	M	O	O	O	O	O	D	D
Gazebo	D	O	O	O	O	O	O	D	D
Shade Structure	M	O	O	O	O	O	O	D	D
Exercise Equipment Circuit	D	O	O	O	O	O	O	O	D
Multi-Purpose Court	M	O	O	O	O	O	O	D	D
Multi-Purpose Fields	D	M	D	D	D	D	D	D	D
Volleyball (Sand) Court	M	O	D	D	D	D	D	D	D
Pavilion with Restrooms	M	D	D	D	D	D	D	D	D
Dog Park	O	O	D	D	D	D	D	O	D
Environmental Education	M	M	O	O	O	O	M	M	D
Sports Lighting	D	D	D	D	D	D	D	D	D
Parking	M	M	M ¹	M ¹	M ¹	M ¹	M ¹	D	D

¹ – On street parking to be provided

3.3.1 Public Central Park

A public Central Park of approximately 9 acres will provide over 7 acres of public space as well as a private 2 acre Homeowner Amenity Center. One of the goals of Trace was to create connectivity to the open space and parks as well as deliver recreational and passive facilities to meet the diverse needs of its residents. The recreational and amenity center will be centrally located so that it can be easily accessed by pedestrian, bicycle or vehicles. Greenspace trails and breaks in lot blocks will provide convenient and direct pedestrian routes to this central amenity to form a cohesive community.

- Public Central Park: On-Site trees shall be provided at a rate of one (1) tree per 30 lineal feet of street frontage and shall be clustered and located in a way that provides programing for active spaces; minimum two (2) inch caliper. A minimum of 50% of required trees must be shade trees.
- Homeowner Amenity Center: On-site trees shall be provided at a rate of one (1) tree per 1000 square feet of undeveloped area; minimum of 2 inch caliper. A minimum 50% of required trees must be shade trees.

3.3.2 Pocket Parks

Trace will include a minimum of five family friendly pocket parks centrally located within the different sections of the community.

- These pocket parks will range in program, size and orientation to respond to the various product types and demographic expected in the respective section.
- Pocket Parks shall be a minimum of ½ acre in size.
- They shall be designed to function as the neighborhood gathering spaces for interaction, play and encourage engagement with the outdoors.
- Some of these pocket parks will be completely surrounded by residential streets with no houses backing up to them as shown in Illustration 15, however a few of the pocket parks are located with houses backing up to them as shown on Illustration 13. In this case, no more than 20 lots shall back up to the pocket park.
- Pocket Parks shall have at least two access points from the residential streets as shown on Illustration 13.
- All lots backing up to these pocket parks shall have tubular steel view fencing with a gate to allow for easy access from those houses to the park area as shown in Illustration 13.
- On-site trees shall be provided at a rate of one (1) tree per 1000 square feet of park area; minimum of 2 inch caliper. A minimum of 50% of required trees must be shade trees.

Illustration 13: Typical Pocket Park



Illustration 13: Typical Pocket Park



Illustration 13: Typical Fencing Elevation at Pocket Parks



3.3.3 Open Space Trails and Boulevard Trails

Trace will provide 2 to 3 miles of trail system that follows the terrain and makes natural features accessible for learning and observing.

- The trail system will provide access throughout the Community that minimizes potential conflicts with automobile traffic.
- The trail system will connect the commercial, the corporate campus, the multi-family and single family areas so that residents can live, work, and play within the Trace Community without getting in a car.
- The trails will range in width and surface to respond to the projected use and location. Trails along the main transportation corridors will be larger (10 to 12 feet width) and permanent concrete surfacing to allow for younger pedestrians and cyclists to traverse the property while minimizing interactions with vehicular traffic.
- Other trails may be decomposed granite, mulch or mowed trails through restored wildflower meadows. Widths will be mutually agreed upon between the developer and the City of San Marcos Parks Department and will vary from 6' minimum up to 12' where projected traffic warrants
- Trees shall be provided at a rate of 1 tree per 50 linear feet of trail; minimum of 2 inch caliper, except along portions of trail located within Environmental Buffer areas and within the Electrical Easement. Trees shall be clustered and located adjacent to trails and/or adjacent street frontage.

3.3.4 Parkland and Open Space Walking Distance

- One of the goals of the Trace Master Planned Community was to provide parks, open space and trails within walking distance of its residents. 98% of the Trace project is within ¼ mile of either a park, a trail or an open space area. The only area not within ¼ mile walking distance of a park, open space or trail is Planning Area 3 located at the corner of Posey Road and Old Bastrop Highway. Street connections between residential neighborhoods shall be provided, wherever possible, to provide reasonable access to parks and open space areas.
- Proposed access and public availability, both physical and visual, of parkland shall be reviewed by the City's Community Services Director and approved by the Planning and Zoning Commission during platting.

Illustration 14: Property within ¼ mile of Open Space or Parks



3.3.5 Parkland and Open Space Maintenance

The Trace parkland, open space and trails systems will be maintained by a combination of both Homeowner's association and city maintenance. The exhibit below shows three types of maintenance.

- Areas dedicated to the City of San Marcos and maintained by the City of San Marcos
- Areas to be dedicated to the City of San Marcos such as medians and large linear parks that will be maintained by the Homeowner's Association
- Areas to be owned by the Homeowner's Association and maintained by the Homeowner's Association
- The Trace HOA shall maintain the hike and bike trails as shown in Illustration 15, including those in publicly owned parkland and open space areas in perpetuity.

Illustration 15: Landscape Maintenance Plan



3.4 Elementary School & Fire Station

Within the Trace Project, approximately 12 acres shall be set aside and designated for use by the San Marcos Consolidated Independent School District ("SMCISD") for the construction of an elementary school campus. However, if the SMCISD fails to accept the property by October 1, 2020, then the property will be retained for residential development and/or parkland at the discretion of the Developer. Upon acceptance of the property for the school, the SMCISD may construct the campus in accordance with its capital improvements plans. In addition, a minimum of 3 acres will be set aside for a future City of San Marcos Fire Station as generally located on Illustration 7: Concept Zoning Plan. The exact location of the site shall be determined prior to the issuance of the first certificate of occupancy for a single family residence within the project and shall be dedicated when the portion of the property where the site is located is final platted; or as defined by the Fire Station Agreement referenced in the appendix. Until the point in time that ownership of the school site and/or the fire station site is transferred, the developer shall be responsible for maintenance of these sites.

Roadway Design Standards Table

Design Elements	2 Way Alley		Enhanced Residential Street				Residential Collector			Commercial/Multifamily Collector		
	Existing City Standard	Trace Standard	Existing City Standard	Trace Enhanced Residential (Standard)	Trace Enhanced Residential (School)	Trace Enhanced Residential (Central Park)	Existing City Standard	Trace Standard AA and BB	Trace Standard CC	Existing City Standard	Trace Standard DD	Trace Standard EE
Expected ADT (vpd)	-	-	500	500	500	500	500 - 3,000	500 - 3,000	500 - 3,000	2,000-10,000	2,000 - 10,000	2,000 - 10,000
Minimum ROW (feet)	16	20	53	52	56	56	62	104	120	80	100	100
Minimum Paved Width (feet)	15	20	33	30	32	32	38	20+20	20+20	48	32+32	32+32
Number of Lane	1-2	2	2	1 queuing	1 queuing	1 queuing	2	2	2	2-4	4	4
Lane Width (feet)	15-20	10	10 - 11 ^a	14	16	16	10 - 11 ^a	12	12	11-12	12	12
Design Speed (mph)	-	-	20 - 30	20 - 30	20 - 30	20 - 30	30 - 35	30 - 35	30 - 35	30-40	30 - 40	30 - 40
Curb Basis (feet)	-	-	10				10.5			14.5		
Tangent Length between reverse curves (feet)	-	-	50	50	50	50	100 - 150	100 - 150	100 - 150	110-150	100 - 150	100 - 150
Spacing of Cross-Street (feet)	-	-	<300	<300	<300	<300	300 - 500	300 - 500	300 - 500	500	300 - 500	300 - 500
Driveways Permitted	-	-	Yes	Yes	Yes	Yes	Yes	No ^b	No ^b	Restricted	Restricted	Restricted
Driveway Spacing (feet) ^c	-	-	1 per property	1 per property	1 per property	1 per property	50 - 75	N/A	N/A	75-100	75 - 100	75 - 100
Parking	-	-	Yes / 2 sides	Yes / 2 sides	Yes / 2 sides	Yes / 2 sides	Yes	Yes / 2 sides	Yes / 2 sides	Restricted	Restricted	Restricted
Landscaping	-	-	Both Sides 3'+3'=6'	Both Sides 7'	Both Sides 7'	Both Sides 7'	Both Sides 3.5' + 2'=5.5'	Both Sides 7' + 5'=12'	Both Sides 7'	Both sides 6'+2'=8'	Both Sides 8'	Both Sides 8'
Street Trees (within 7' Street Tree Area)				1 Shade Tree ^d per 30 LF- 2" caliper	1 shade tree per 30 LF – 2-4" size; avg. 3" caliper School Side	1 shade tree per 30 LF – 2-4" size; avg. 3" caliper Park Side		1 shade tree per 30 LF – 2-4" size; avg. 3" caliper Both sides	1 shade tree per 30 LF – 2-4" size; avg. 3" caliper Both sides		1 shade tree per 30 LF – 2-4" size; avg. 3" caliper Both sides	1 shade tree per 30 LF – 2-4" size; avg. 3" caliper Both sides
Ornamental Trees					1 Ornamental tree per 5 shade trees – min. 2" caliper – School Side	1 Ornamental tree per 5 shade trees – min. 2" caliper – Park Side		1 Ornamental tree per 5 shade trees – min. 2" caliper – Both Sides	1 Ornamental tree per 5 shade trees – min. 2" caliper – Both sides		1 Ornamental tree per 5 shade trees – min. 2" caliper – Both Sides	1 Ornamental tree per 5 shade trees – min. 2" caliper – Both Sides

Roadway Design Standards Table												
Design Elements	2 Way Alley		Residential Street				Residential Collector			Commercial/Multifamily Collector		
Sidewalks (width)	-	-	Yes 4'	Yes 4'	Yes 5' on both sides	Yes 5' on both sides	Yes 5'	Yes 6'Joined with Bike Path	Yes 6'	Yes 5'	Yes 5'	Yes 5' on one side; 10' trail on other
Bike Path Bike Lane	-	-	None	None	None	None	None	Yes 6' Joined with Sidewalk 12' on ea. side	Yes Bike Path 12' meandering in linear park	None	Yes Bike Lane 6' w/ 2' striping	Yes Bike Lane 6' w/ 2' striping
Grades % (max) ^d	2%	2%	8%	8%	8%	8%	8%	8%	8%	8%	8%	8%
Min. Median Widths (feet)	-	-	-	-	-	-	4	16	50 Tapers smaller at entry	4	20	20
Expected percent of Heavy Vehicles (%)	-	-	1.7	<1.0	<1.0	<1.0	1.4 - 8.3	<2.0	<2.0	2.0-9.8	<5.0	<5.0

^a - With Additional parking lanes of 8 feet on both sides

^b - Individual Driveways to single family homes will not be permitted along Street Sections AA, BB, CC nor EE except for entrance to the school site or park site

^c - Varies with the design speed of the roadway and is different for City and TxDOT roadways. Refer to Chapter 5: Driveway Design and Access Management

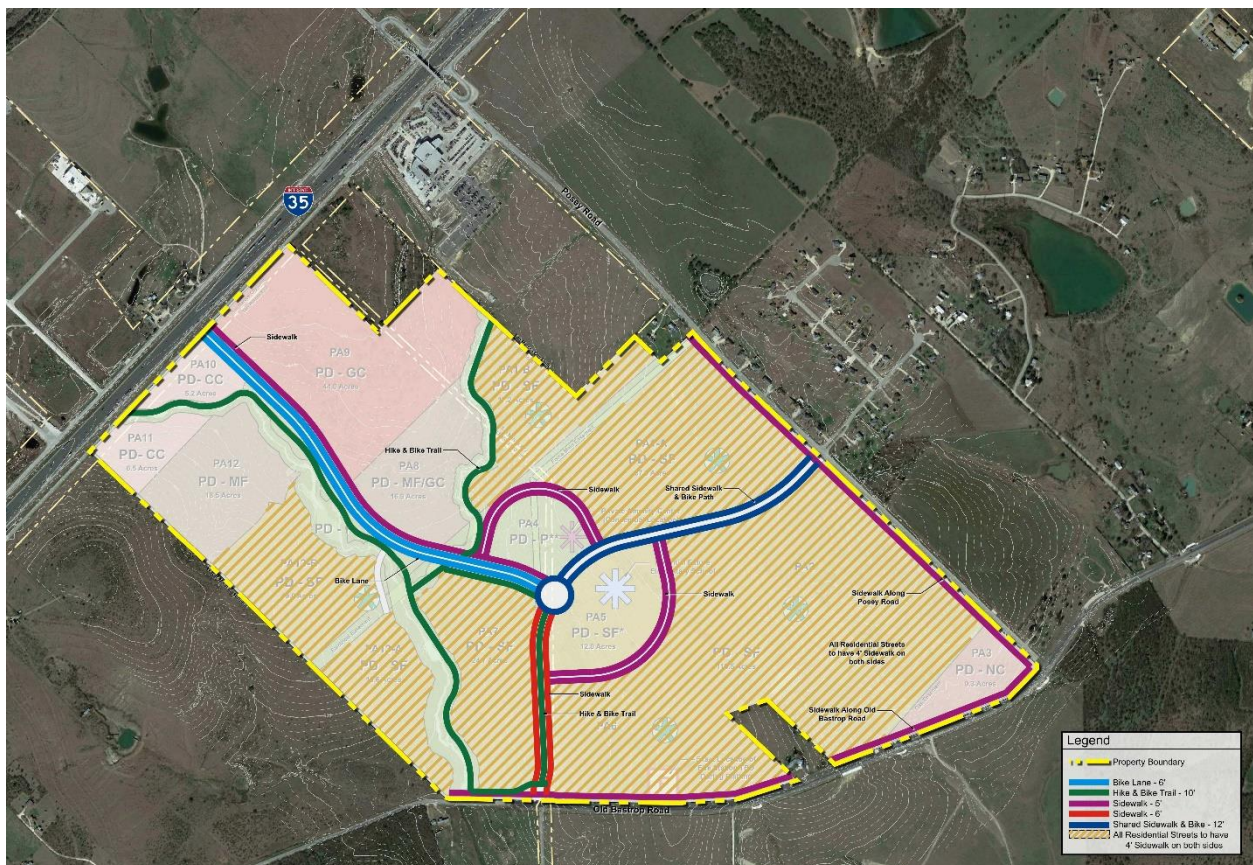
^d – On single-family lots 40 feet in width or less ~~located on an Enhanced Residential Street~~, only one street ~~tree~~ shall be required per lot. ~~This street tree may count towards the~~ Additionally, -two on-site shade trees ~~are per lot~~ required per lot by Section 6.1.1.4(d)(1) of the LDC. ~~One of these shade trees may count towards the one required street tree.~~

^e – For construction of steeper grades, detailed traffic and environmental studies are required

4.1 Street Section Design

- Driveway access to single family homes shall be prohibited along Street Section AA, BB and CC except for a permitted driveways into the school site and or the central park and amenity center.
- At the time of the Subdivision Concept Plat for Planning Area 9, a roadway shall be provided to connect the Toyota property thru Planning Area 9 to the Commercial /Multi-Family Collector Road (DD). The applicant will show that there will be a north – south connection from the Toyota Property thru Planning Area 9 connecting to the roadway situated between Planning Area 12 and 13. A Traffic Analysis will be provided at that time based on proposed land uses to warrant the size of the right of way as well as the ability to design this Connector Road in either a straight or circuitous manner.
- Commercial block length shall not exceed 1,650'

Illustration 17: Pedestrian Sidewalk / Bicycle Circulation Plan



Enhanced sidewalks and pedestrian access are provided throughout the Trace project.

- 6 foot bike lane with a 2 foot striped and textured buffer between traffic lane and bike lane
- 6'-12' foot meandering hike and bike trails through the Environmental Buffer Trail System and the Open Space Electrical Easement
- 5 foot sidewalk around the school and central park sites
- 6 foot sidewalk along Street Section CC
- 12 foot shared pedestrian and bike path sidewalk along Street Sections AA, BB and through the center of CC
- 4 foot sidewalk throughout the residential neighborhoods
- 5 foot sidewalks along Posey Road and Old Bastrop Highway with a 7' street tree area

Illustration 18: Key Map to Street Cross Sections

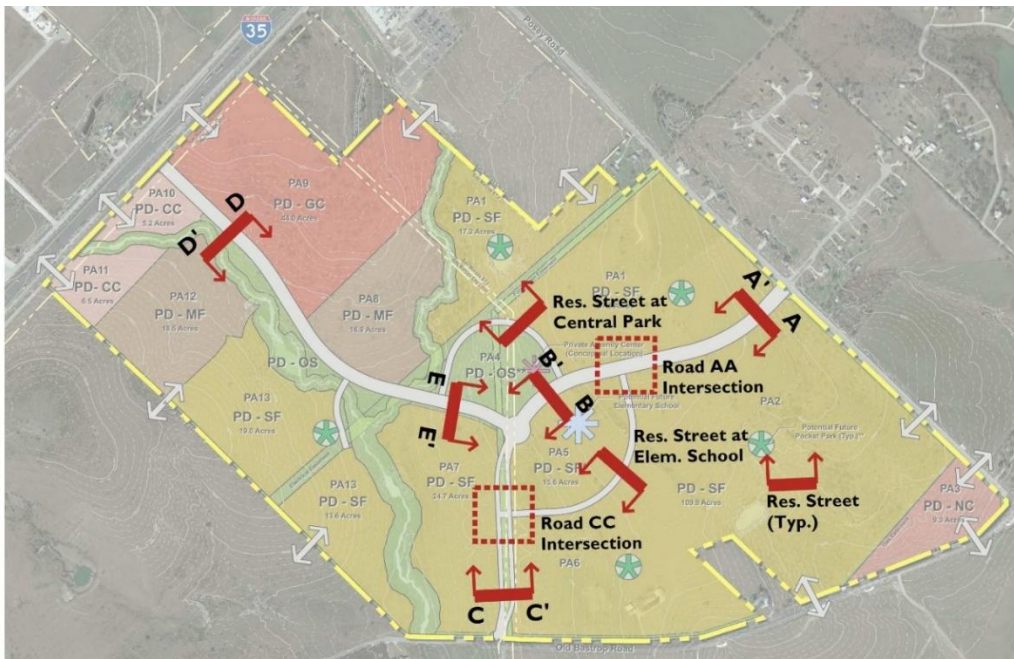


Illustration 19: Enhanced Residential Street (Standard)

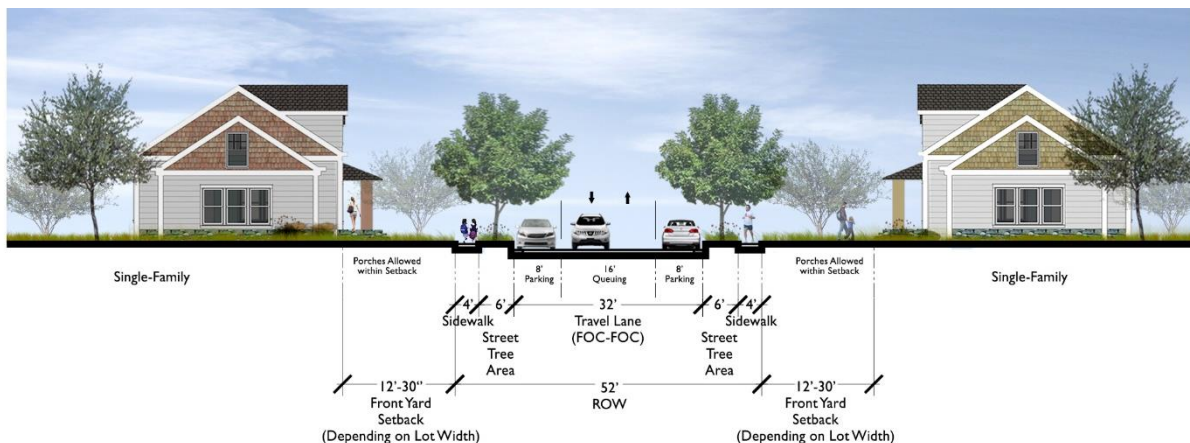


Illustration 20: Enhanced Residential Street (Central Park)

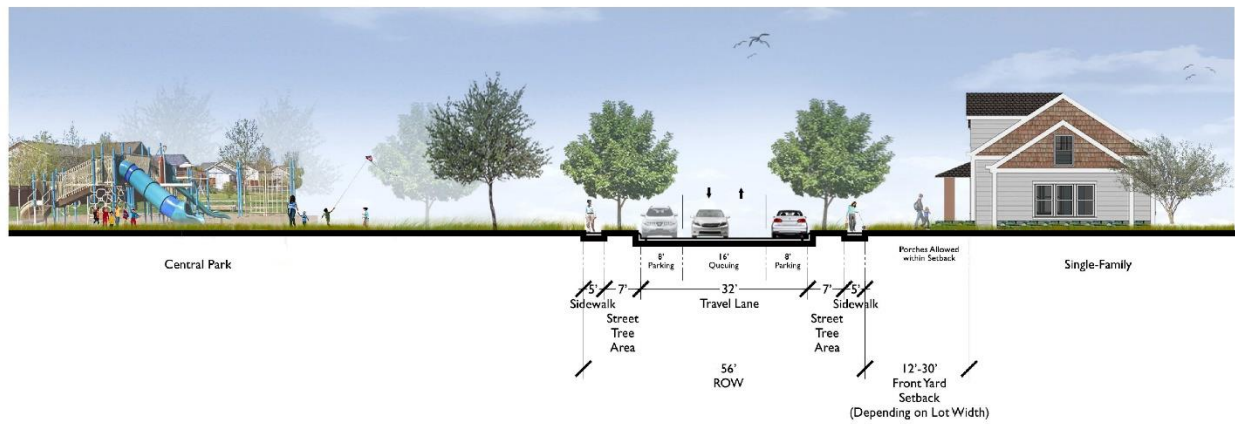


Illustration 21: Enhanced Residential Street (School)

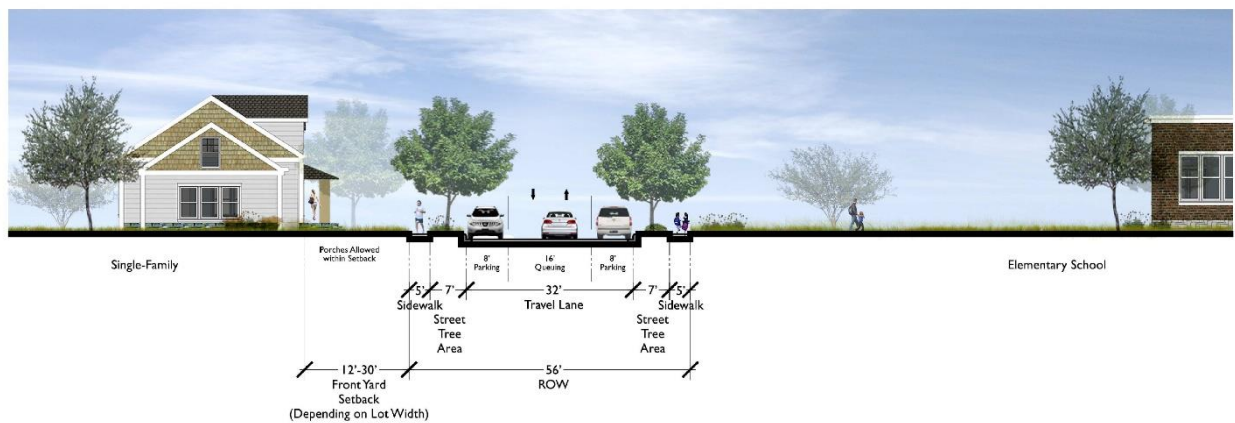


Illustration 22 Enhanced ROW Section AA

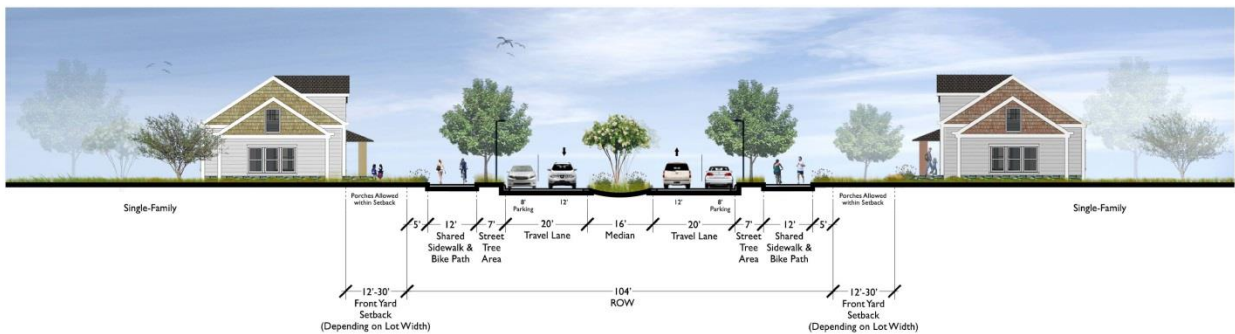


Illustration 23: Plan View Section AA

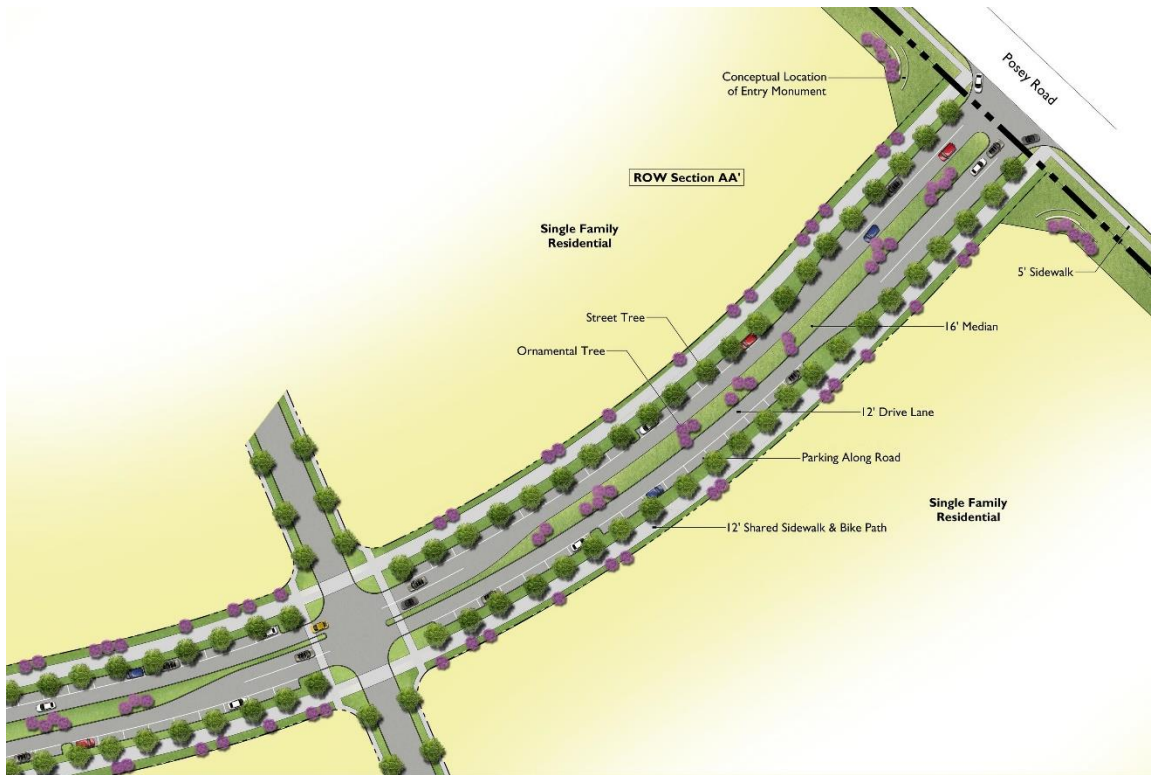


Illustration 24:
Typical Intersection at
ROW Section AA

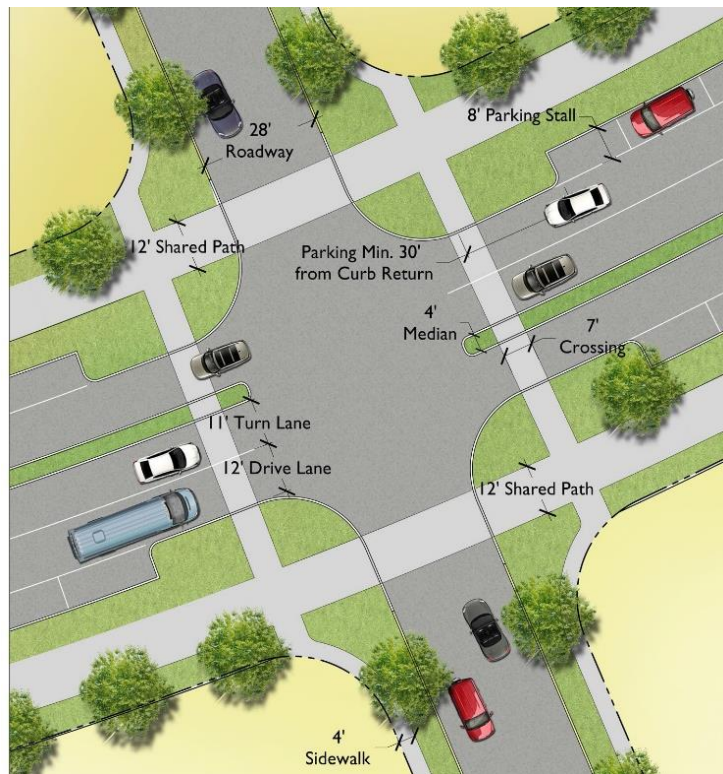


Illustration 25: Enhanced ROW Section BB

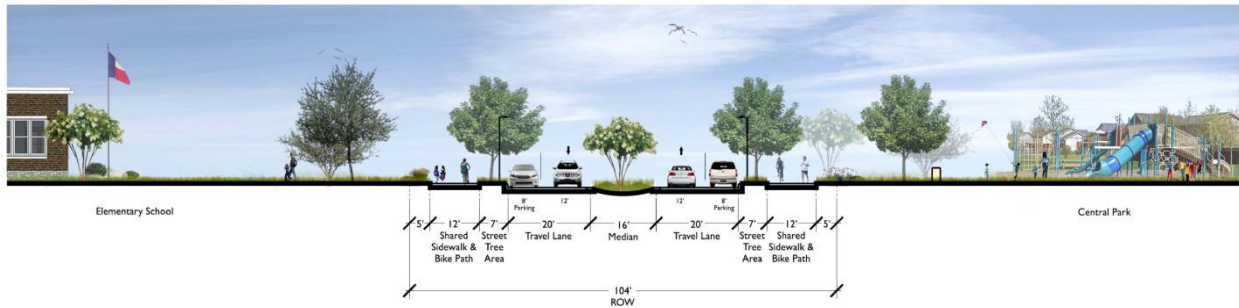


Illustration 26: Roundabout Plan View and Typical Future Bus Stop Plan



Illustration 27: Enhanced ROW Section CC

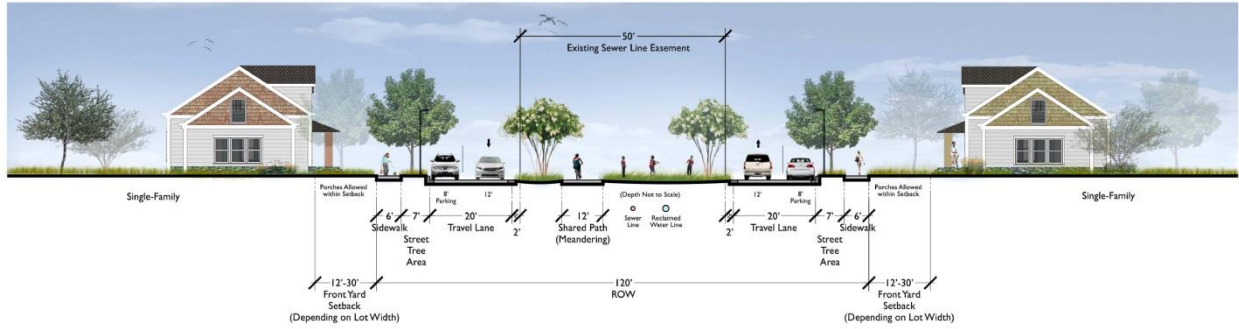


Illustration 28: Plan View of Section CC



Illustration 29: Typical Intersection at ROW Section CC

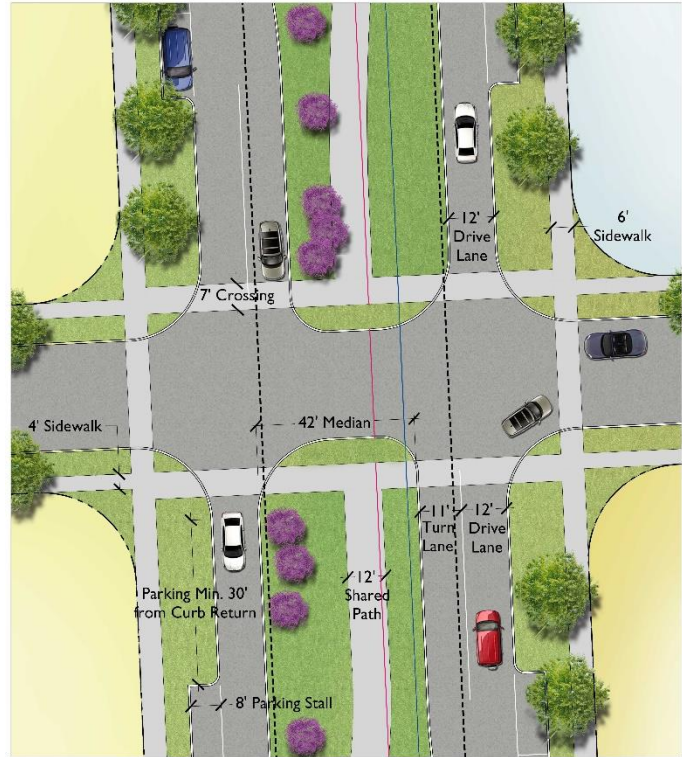


Illustration 30: Enhanced ROW Section DD

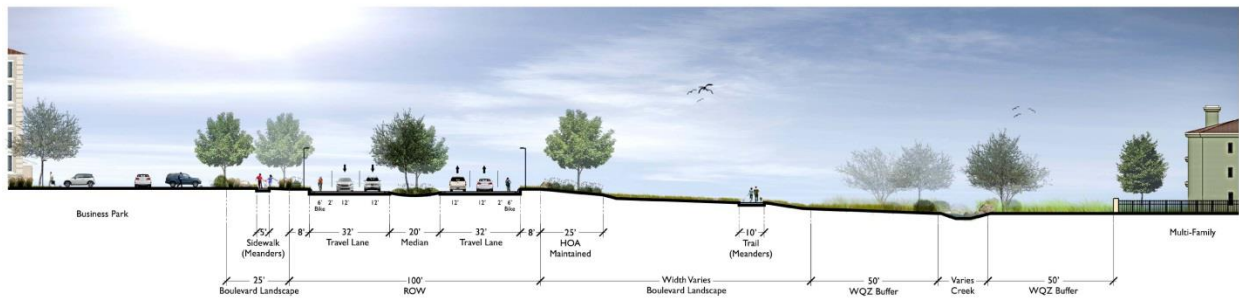
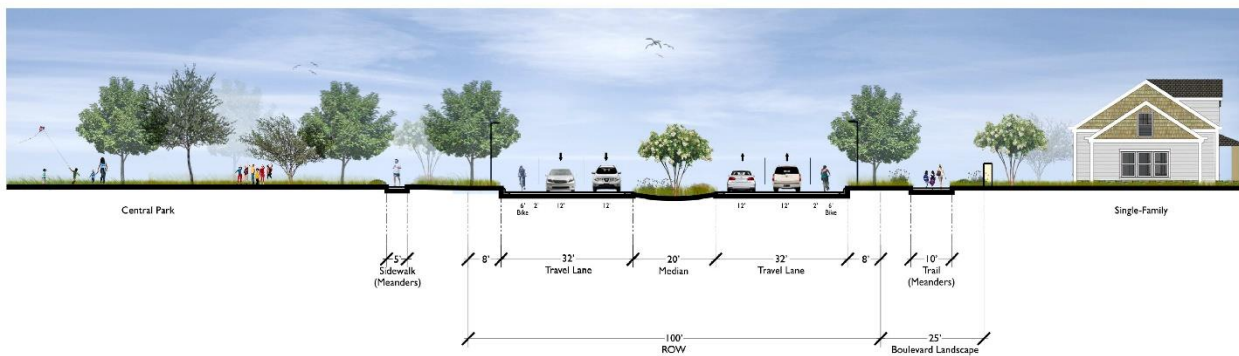


Illustration 31: Enhanced ROW Section EE



4.2 Cul-De-Sacs

A cul-de-sac is a circular turnaround at the end of a short, dead-end street. The illustration to the right depicts a typical cul-de-sac design for the Trace project.

- Landscape areas shall be provided within the circular area of the cul-de-sac to include at least one (1) street tree of between 2" – 4" caliper.
- Cul-de-sacs shall not be more than 450 feet in length unless it is not feasible to design them in any other length. In no case shall the cul-de-sacs in Trace be designed more than 500 feet in length unless approved by the City Engineer for specific reasons concerning site constraints such as avoidance of environmentally sensitive areas, topography or engineering design.
- Cul-de-sacs shall have a ROW radius of 60 feet.
- Cul-de-sacs shall include sidewalk pedestrian access from the end of the cul-de-sac to the next adjoining street.
- Construction of cul-de-sacs shall include proper signage at the entrance to inform drivers that the street is not a through street.

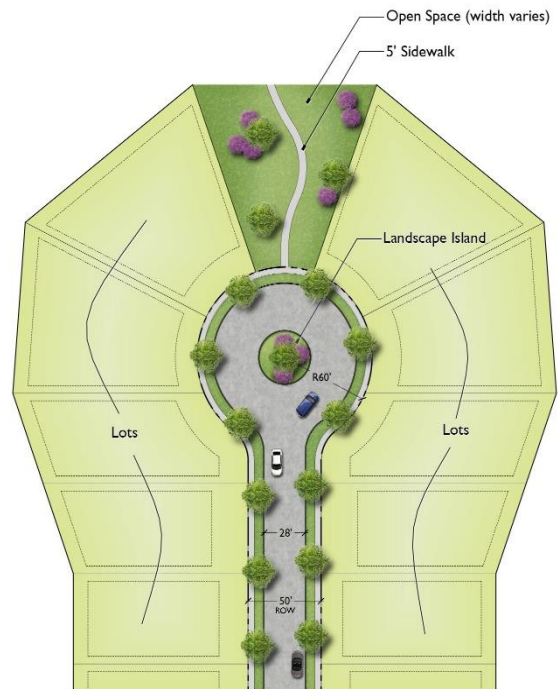
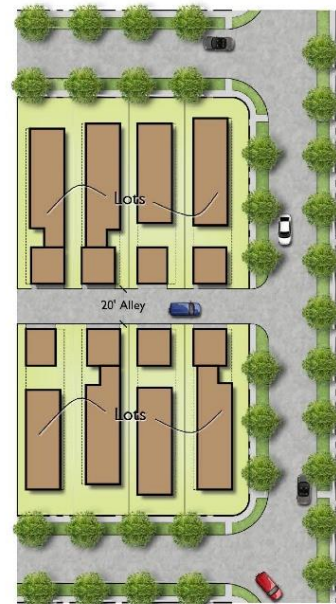


Illustration 32: Typical Cul de Sac and Alley

4.3 Alleys

Older, traditional urban development in cities prior to World War II used the alley for garage access extensively. With the popularity of the car, alley designed access for garages became almost obsolete. In keeping with a more traditional neighborhood design at Trace, alleys shall be permitted in Trace but not required in every single instance of subdivision design.

- Alleys shall be required adjacent to all lots 40' wide and smaller.
- Alleys shall be a minimum of 20' wide
- Alley loaded product shall be required along the entire length of Street Section AA and Street Section CC.



4.4 Block Lengths

- Residential blocks in Trace shall not exceed eleven hundred (1,100) feet in length nor be less than six hundred (600) feet.
- Commercial blocks in Trace shall not exceed one-thousand six-hundred and fifty (1,650) feet in length.

4.5 Horizontal Alignment

- The horizontal approach to an intersection should be tangent for a length of 50-100 feet.
- The desirable angle of intersection is 90 degree. Intersections skewed at angles less than 80 degrees or more than 100 degrees should be avoided but are allowed within Trace due to specific reasons concerning site constraints such as avoidance of environmentally sensitive areas, topography or engineering design.

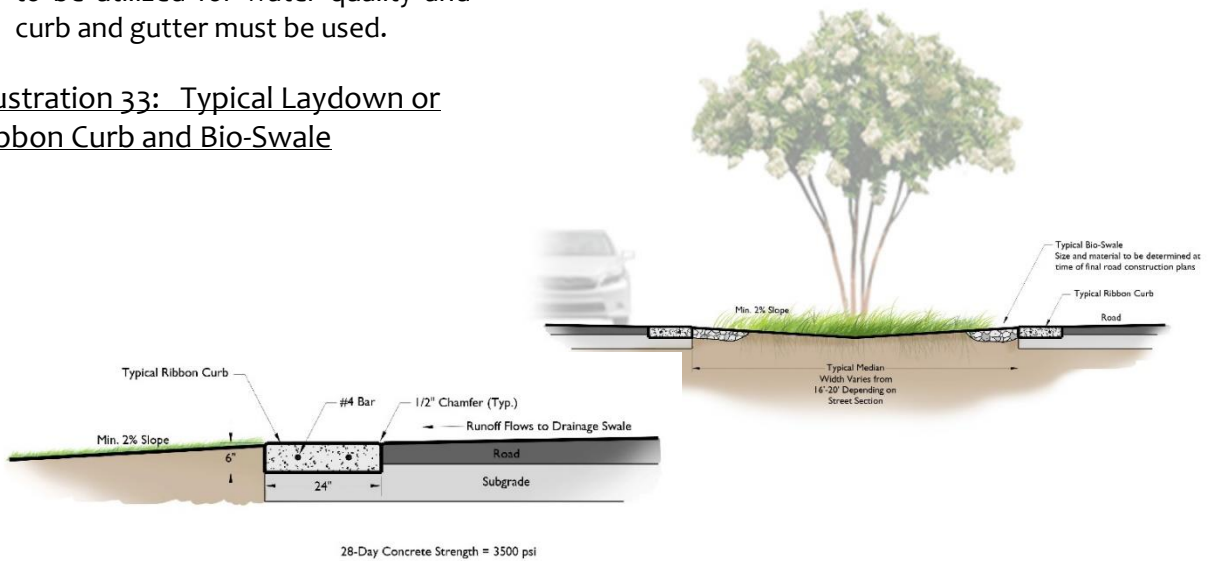
4.6 Street Trees

- Street trees shall be provided along Street Sections AA, BB, CC, DD and EE at one (1) shade tree per 30 lineal feet of street frontage. Shade trees shall range in caliper size of 2" to 4" with an average caliper size of 3" and be spaced at 30' on center.
- Street trees shall be provided along Enhanced Residential Streets at one (1) shade tree per 50 lineal feet of street frontage, as required by Section 6.1.1.4(2) of the LDC. Shade trees shall be a minimum caliper size of 2".
- Along Street Sections AA, BB, CC, DD and EE ornamental trees shall be provided at one (1) ornamental tree per five (5) shade trees and be of a minimum caliper size of 2".
- Street trees shall be provided within the median of Street Sections AA, BB, DD, and EE at one (1) ornamental tree per 30 lineal feet of street frontage; minimum of 2" caliper.
- Street trees shall be provided within the median of Street Sections CC at two (2) trees per 30 lineal feet of street frontage; minimum of 2" caliper. A minimum of 50% of required street trees may be ornamental. However, this requirement may be lessened or decreased at the discretion of the Director of Engineering and Capital Improvements.
- Trees installed along Street Sections AA, BB, CC, DD and EE and maintained by the HOA, will be watered with an HOA installed, monitored and maintained irrigation system. The trees will be watered by bubblers (2/shade tree and 1/ornamental tree).
- On single-family lots 40 feet in width or less ~~located on an Enhanced Residential Street~~, only one street tree will be required per lot. ~~and one street tree may count towards the~~ Additionally, ~~two two on-site~~ shade trees ~~are per lot~~ required ~~per lot~~ by Section 6.1.1.4(d)(1) of the LDC. One of these shade trees may count towards the one required street tree.
- Street trees located along Enhanced Residential Streets shall be installed at the time of construction of improvements by the builder and shall be warrantied by the builder for a minimum period of 2 years.
- Street trees shall be provided along all Posey Road and Old Bastrop Road frontage at a rate of one (1) tree per 50 feet of linear frontage.

4.7 Bio-Swales

- The Residential Collector roads within Trace shall have landscaped medians which can offer a unique approach to water quality. Medians shall be inverted and will capture runoff from all ROW, as the inside curb of both sides of traffic will be of the laydown or ribbon variety. This will allow the roadway to sheet flow into the median, where vegetated infiltration strips can be utilized to treat runoff. However, in cases where road grades exceed 8.5%, it is not feasible for the medians to be utilized for water quality and curb and gutter must be used.

Illustration 33: Typical Laydown or Ribbon Curb and Bio-Swale



Section 5 Site Design

5.1 Dimensional and Lot Standards

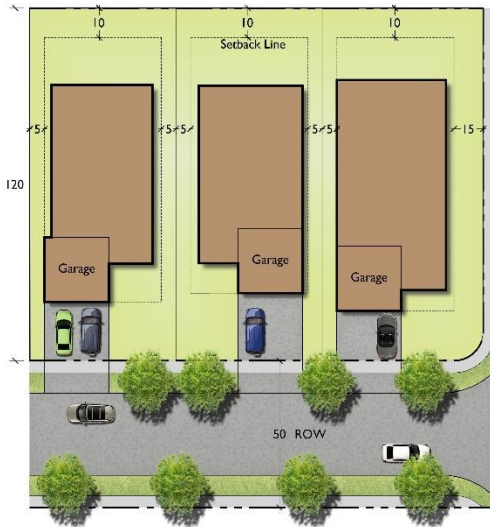
The following Lot and Dimensional Standards shall apply to the Property and the Project in order to result in a higher quality development for the community. These Standards modify the requirements of the City Code. The ***bold italicized*** standards are exceptions to the City's required dimensional and lot standards. Two new types of lots are permitted in the Trace Master Plan to allow for a variety of different types of housing. Except and unless expressly varied by these PDD Standards, the Property and the Project shall be subject to all applicable requirements of City of San Marcos ordinances, zoning regulations and Land Development Code ("LDC") (collectively, the "Base Regulations").

STANDARD CATEGORY	SF-6	SF-4.5	<i>SF-ALLEY LOADED 32'</i>	<i>SF-ALLEY LOADED 40'</i>	<i>SF-ALLEY LOADED TH</i>	PH-ZL
Lot/Parcel Area Minimum Sq. Ft.	6,000	4,500	<i>3,500</i>	<i>4,400</i>	2,500	4,000
Units per Acre Maximum/Gross Acre	5.5	7.5	<i>10.0</i>	<i>8.0</i>	6/12	7.5
Lot Frontage, Minimum Feet	35	35	N/A	N/A	25	35
Lot width, Minimum Feet	50	40	<i>32</i>	<i>40</i>	25	40
<i>Front yard Setback, Range in Feet</i>	<i>20' to 30'</i>	<i>17' to 23'</i>	<i>12' to 18'</i>	<i>12' to 18'</i>	<i>17' to 23'</i>	<i>17' to 23'</i>
Side Yard Setback, Minimum Feet, Interior	5	5	5	5	0	0/10
Side Setback, Minimum Feet, corner	15	15	<i>10</i>	<i>10</i>	10	10
Rear Yard Setback, Minimum	20	<i>10</i>	<i>3'</i>	<i>3'</i>	<i>3'</i>	10
Lot Depth, Minimum Feet	100	90	110	110	N/A	85
Impervious Cover, Max %	50%	60%	<i>80%</i>	<i>80%</i>	<i>80%</i>	75%
Building Height, Maximum Stories	2	2	<i>2</i>	<i>2</i>	2	2

¹ **Rear Yard Setback** - This rear yard setback is measured from the garage door to the edge of the alley pavement.

- A concise checklist shall be developed with Planning Department Staff to enforce architectural regulations and site plan regulations and to provide efficient staff review at the time of permit/plan review. This concise checklist shall be completed prior to the first Concept Plat submittal.

Illustration 34: Typical Lot Layouts SF-6 – 50', 60' and 70' wide Lots

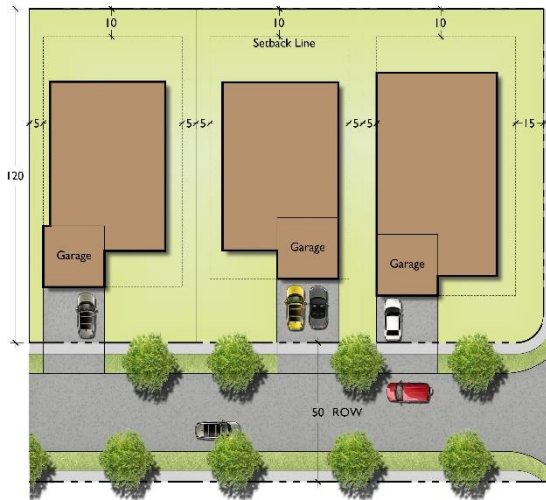


SF-6 50' Wide Single Family Lots

Min. Lot Size	6,000 SF
Lot Width:	50'
Lot Depth:	120'
Front Yard Setback:	Range 20' to 30' (Avg. 25')
Side yard Setback:	5' (15' Corner Lot)
Rear yard Setback:	10'
Attached Garage:	Yes
Alley:	No

SF-6 60' Wide Single Family Lots

Min. Lot Size	7,200 SF
Lot Width:	60'
Lot Depth:	120'
Front Yard Setback:	Range 20' to 30' (Avg. 25')
Side yard Setback:	5' (15' Corner Lot)
Rear yard Setback:	10'
Attached Garage:	Yes
Alley:	No





SF-6 70' Wide Single Family Lots

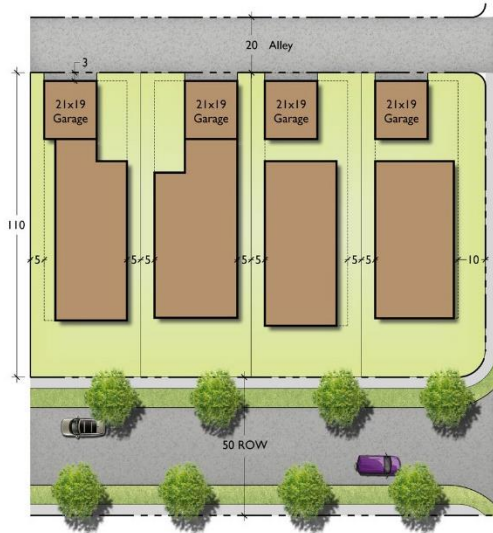
Min. Lot Size	8,400 SF
Lot Width:	70'
Lot Depth:	120'
Front Yard Setback:	Range 20' to 30' (Avg. 25')
Side yard Setback:	5' (15' Corner Lot)
Rear yard Setback:	10'
Attached Garage:	Yes
Alley:	No

Illustration 35: Typical Lot Layouts SF-4.5 – SF Alley Loaded 32' and SF Alley Loaded 40'

SF-Alley Loaded 32' Wide Single Family Lots

Min. Lot Size	3,500 SF
Lot Width:	32' – 34'
Lot Depth:	110'
Front Yard Setback:	Range 12' to 18' (Avg. 15')
Side yard Setback:	5' (10' Corner Lot)
Garage Setback from Alley:	3'
Garage:	21' x 19' or 21' x 17' Pad
Alley:	Yes – 20' wide
Porch:	Min. 8' Setback from ROW





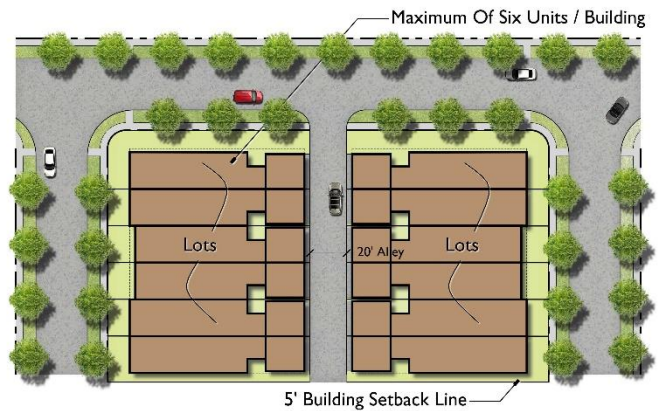
SF-Alley Loaded 40' Wide Single Family Lots

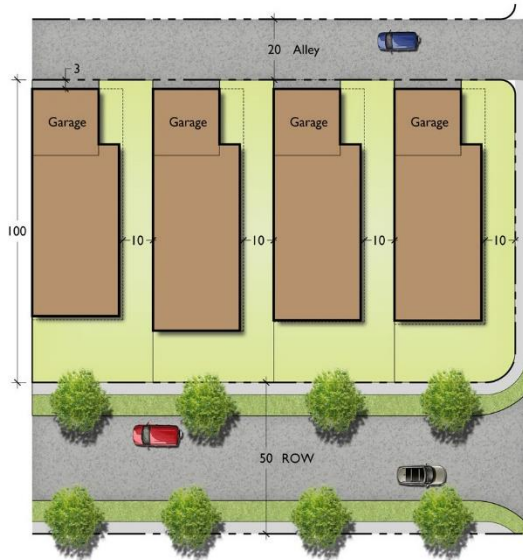
Min. Lot Size	4,400 SF
Lot Width:	40'
Lot Depth:	110' Min.
Front Yard Setback:	Range 12' to 18' (Avg. 15')
Side yard Setback:	5' (10' Corner Lot)
Garage Setback	
From Alley:	3'
Garage:	21' x 19' or 21' x 17' Pad
Alley:	Yes – 20' wide
Porch:	Min. 8' Setback from ROW

Illustration 36: Typical Lot Layouts Townhome – Patio Home-Zero Lot Line

SF-Alley Loaded Townhome

Min. Lot Size	2,500 SF
Lot Width:	25' – 30' (corner)
Lot Depth:	100'
Front Yard Setback:	Range 17' to 23' (Avg. 20')
Sideyard Setback:	10' Corner Lot
Garage Setback	
from Alley:	3'
Alley:	Yes – 20' wide
Porch:	Min. 8' Setback from ROW





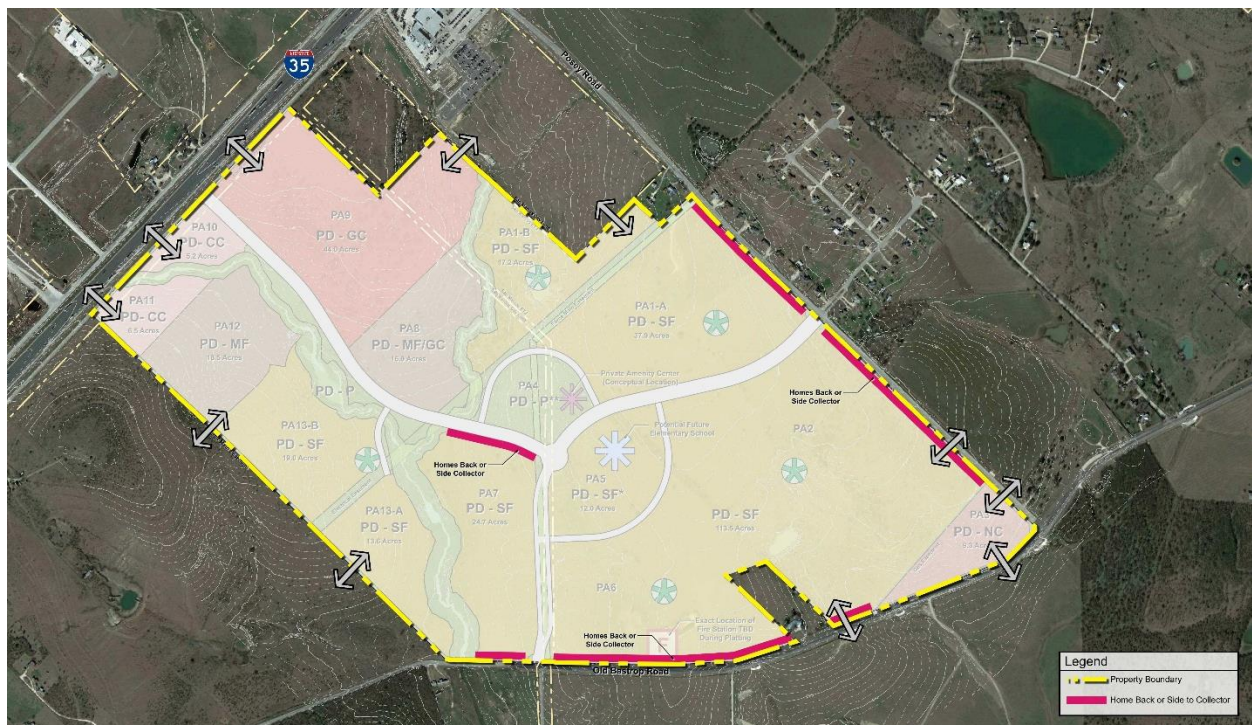
Patio Home – Zero Lot Line Alley Loaded

Min. Lot Size	4,000 SF
Lot Width:	40'
Lot Depth:	85' Min. - 100' Typ.
Front Yard Setback:	Range 17' to 23' (Avg. 20')
Side yard Setback:	0/10'
Rear yard Setback:	10' if front loaded
From Alley:	3'
Garage:	21' x 19'
Alley:	Yes – 20' wide

5.2 Site Design

- No house will back up to nor take driveway access from Street Sections AA, BB, or CC.
- All lots 40' wide and less, shall not have front loaded garages and shall be alley loaded.
- Individual houses shall be allowed to back up to Posey Road, Old Bastrop Highway and a portion of Road Section EE as shown on Illustration 37.
- A concise checklist shall be developed with Planning Department Staff to enforce architectural regulations and site plan regulations and to provide efficient staff review at the time of permit/plan review. This concise checklist shall be completed prior to the first Concept Plat submittal.

Illustration 37: Areas where Houses May Back-up to a Public Street



Section 6: Architectural Design

6.1 Single Family Residential

Except for the standards outlined below, the Property and the Project shall be subject to the existing City Code of Ordinances, Subpart B – Land Development Code, Chapter 4, Article 2, Division 1 – Section 4.2.1.5 - SF-6, Single-Family District; Section 4.2.1.6 - SF-4.5, Single-Family District; Section 4.2.1.9 - TH, Townhouse Residential District; and Section 4.2.1.10 - PH-ZL, Patio Home, Zero-Lot-Line Residential District Design Standards attached in Appendix.

The Standards outlined below reflect superior requirements than the existing City Code of Ordinances. If the provisions of the standards below are inconsistent with provisions found in the existing City Code of Ordinances, the standards below shall control. Trace shall require the following Single Family Residential Architectural Standards.

- A concise checklist shall be developed with Planning Department Staff to enforce architectural regulations and site plan regulations and to provide efficient staff review at the time of permit/plan review. This concise checklist shall be completed prior to the first Concept Plat submittal.

6.1.1 Variation

- Each block face shall contain a mix of one and two story units.
- A maximum separation of 3 units shall be maintained between one and two story units.
- Each block face shall contain a variety of building elevations with no more than two of the same building elevation on repeating floor plans.
- Variety in building elevations shall be achieved along the main façade by utilizing a minimum of two (2) of the following: balcony, porch, dormer window, bay window, and/or single car garage bays.
- A separation of at least 4 lots shall be maintained for any floor plan with repeating elevations.
- Each block face shall contain variety in primary roof design of single family residential homes.
- A variety of architectural styles shall be encouraged within all of Trace.
- Each block face shall contain a mix of homes with varied colors. A minimum separation of at least 3 units shall be maintained between repeating houses with similar paint color. Color variation may be achieved through a change in primary material.

6.1.2 Form & Scale

- A minimum of two of the following architectural details shall be required along all facades fronting and siding-up to a public street: decorative roof eaves, decorative columns and/or supports, belt courses, cornice, porch railings, window boxes, decorative window and door surround or similar architectural details that provide scale and visual interest.

- At least one of the following architectural details shall be required on houses which back up to a public street: decorative roof eaves, decorative columns and/or supports, belt courses, cornice, porch railings, window boxes, decorative window and door surround or similar architectural details that provide scale and visual interest.
- Houses on corner lots shall be sited and designed so that they present attractive elevations to both streets. Wrap around porches, façade compositions, building and landscape elements and/or other design schemes should be employed.



Specific to Attached Single Family Residences

- May appear as “big houses” or as an individual attached unit with distinctly different facades and roof forms
- Monolithic and/or repetitive forms are not permitted.

6.1.3 Roof Design

- Primary roof structures shall employ gabled roofs, hipped roofs, dormered roofs or gambrel roofs. Additional variation shall be achieved with gabled roofs by employing a mix of front/rear facing gabled roofs and side facing gabled roofs as the predominant roof structure type.

Side and front gable combination



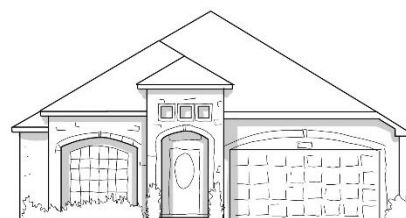
Front Gable



Hip and gable combination



Varied Hip



- Secondary roof projections, such as porches, shall employ similar roof types and variation.
- Variation in roof color or material shall be employed.
- Variation in ridgeline and eave height shall be employed between various floor plans or models but are not required between elevations of the same floor plan.

6.1.4 Porches

- All entrances that face a public street shall have a covered entry which is not considered a porch. One and one half story covered entries shall be allowed.

1-1/2 Story Covered Entry



- If front porches are utilized, they shall be a minimum of 6 feet in any direction and have a minimum of 60 square feet.
- If a porch is utilized on a corner lot, the porch shall wrap around the corner of the house, shall be a minimum of 6 feet deep from house to porch front and shall contain a minimum area of 120 square feet.
- Two story front porches shall be allowed. The second story porch shall have a useable floor and a roof covering. Second story porches may be screened or un-screened.

Example of a two story porch with decorative railings above



6.1.5 Materials & Color

- A variety of materials for siding on homes shall be used. Combinations of board & batten, painted metal siding, brick, stone, stucco, horizontal lap siding (wood or hardiplank), clapboard, shake or shingle siding can be used. Fiber cement siding shall be allowed for horizontal lap siding, clapboard and shake or shingle siding only.

An Example of brick, stone, stucco and hardiplank siding
as well as great variation in roof design



- Heavier materials shall occur below the lighter materials to accentuate the base of the home.
- For each home, multiple colors shall be employed to differentiate between façade elements such as primary surfaces, trim, doors and windows in order to provide visual interest.
- Exterior chimneys shall be clad with brick, stone, or stucco.
- When more than 12" of foundation is visible then exposed foundation shall be covered with masonry, painted or finished with stucco. Where this applies, at the front of a house or on a corner lot, the exposed foundation at the two sides facing the street shall be covered with masonry.

6.1.6 Garages, Pool Equipment, Trash containers, Misc. Accessory Structures

- Detached garages can be utilized. 30% of two car garage doors shall have windows within the door and the remaining 70% shall have decorative hardware or designer doors.
- On all lots 50' wide or more, no more than 50% of all garage fronts shall be set in front of the plane of the entry to the house. The remaining 50% of lots shall have the garage fronts either equal to or set back from the front plane of the house.
- Pool and air conditioning equipment on corner lots shall be located on an interior side property line or behind solid back yard fencing.
- Trash and waste containers shall be located within the garage and/or an area in the rear yard screened from public view. Small fenced-in areas containing only the trash receptacles will be allowed in the alley areas if those lots are designed in the project.
- Utility structures for individual houses or along streets shall be screened in accordance with screening guidelines in Section 8 Screening and Fencing.
- Main house entrances or individual unit entrances shall be well lit and easily accessible. Garages on alleys shall have at least one carriage light per garage.

- Accessory buildings, if built or placed upon the individual lots, shall be subject to review by the architectural committee of the HOA.

6.2 Multi Family Residential

Except for the standards outlined below, the Property and the Project shall be subject to the existing City Code of Ordinances, Subpart B – Land Development Code, Chapter 4, Article 4, Division 3 – Multi Family Residential Design Standards attached in Appendix.

The Standards outlined below reflect superior requirements than the existing City Code of Ordinances. If the provisions of the standards below are inconsistent with provisions found in the attached existing City Code of Ordinances, the standards below shall control.

6.2.1 Variation

- For any street frontage containing at least three (3) and not more than (5) buildings (excluding clubhouses/leasing offices), there shall be at least three (3) distinctly different building designs ~~using the methods above~~.
- For all street frontages, there shall be no two (2) similar buildings placed next to each other along a street.

6.2.2 Building Design

- Combinations of two and three story; three and four story; or two, three and four story buildings shall be used to create visual building variation and roof lines.

6.2.3 Roof Design

- A variety of roof modulations including turrets, dormers, cross gables, side and front gables, dual pitched roofs, cupolas, fenestrations and exposed rafters shall be used to create roof variations within any one building.

6.2.4 Lighting

- Main building entrances or individual unit entrances shall be well lit and easily accessible.

6.2.5 Miscellaneous

- This Multi-Family Residential District shall not have “rent by the individual bedroom” apartments.

6.3 Commercial

Trace shall require the following Commercial Architectural Standards. In order to ensure the aesthetic value and visual appeal of the City to residents and to visitors and potential businesses, the standards and criteria contained within this section are established as minimum standards. These standards shall apply to all construction (new, altered or repaired). Portions of building elevations that are not generally visible from public view (streets, trails, parks or similar property) are exempt from these requirements.

6.3.1 Orientation

- Buildings should respond to the orientation of neighboring buildings within the commercial areas and to neighboring uses. i.e commercial to commercial or commercial to multi-family
- Buildings may back up to I-35 provided they are screened and setback appropriately.
- Buildings may be oriented towards I-35 but should also be oriented to the Collector Roadway as shown on Illustration 40: Allowable Commercial Orientation.
- In no case shall the rear of a building back up to a Collector Roadway.
- In some cases, such as corner lots, buildings will have more than one orientation and shall require more than one entry treatment.
- Buildings located on a corner shall be oriented toward the corner.

Illustration 38: Allowable Commercial Orientation



6.3.2 Form & Scale

Horizontal Articulation: (All facades visible from public view)

- Facades shall be broken up into vertical bays of 40-50 feet. Bays shall be articulated by pilasters, piers, and change in material texture, color, or variation in wall plane.
- Change in wall plane and material must occur every 50 to 80 feet.
- Buildings located on corners should employ a change in wall plane to address the corner.

Vertical Articulation: (All facades visible from public view)

- Buildings shall have a clearly defined three part façade consisting of a base, middle, and top, which contribute to the human scale of the building.

- Architectural details employed in the three part façade shall include a minimum of three (3) of the following: water tables, string course, sign band, cornice, display windows, overhanging eaves, change in color, change in material, change in texture, or fenestration.
- Multi-Story buildings shall also employ a pattern of windows for the middle and upper section(s)".
- For single story buildings with exceptionally high ceiling plate, such as the case with large format retail, a string course shall be employed at a typical 2nd floor plate of 15-20 feet.
- Changes in height shall be employed at locations where wall plane is modulated.
- Buildings located on corners should employ a change in wall height to address the corner.

Ground Level Articulation: (All facades visible from public view)

- Where there is a retail use, ground floor facades shall have arcades, display windows, entry areas, awnings, and other features no less than 50% of their entire length.
- Where there is an office use, ground floor facades shall have entry areas, awnings, and other features no less than 25% of their entire length.

6.3.3 Roof Form

- Gabled, hipped, or other sloped roof forms that relate to residential human scale, are encouraged.

6.3.4 Entries

- Entries should be clearly defined and highly visible.
- Entry articulation shall be the most prominent element of the façade.
- Entry features shall include a minimum of two (2) of the following: awnings, porches, porticos, arcades, colonnades, change in massing, change in wall plane, or change in roof forms.
- Multi-Story entry elements are permitted but must provide habitable space on upper floors.

6.3.5 Materials

- Buildings shall be clad with glass, steel, architectural metals, and/or masonry materials such as decorative/textured split face concrete block, brick, stone, or cement stucco.
- Synthetic stucco materials, such as Exterior Insulation and Finish Systems (EIFS) and composite materials such as cementitious fiberboard (hardiplank), should be limited to no more than 20 percent of the total area of each façade, not including doors and windows.
- Permitted Materials for Roof Construction. The following materials are permitted for roof construction: Copper, Metal sheet roofing, Tile – Concrete or Clay, A Commercial Flat (built up) Roof and/or Composition Roof.

6.3.6 Exterior Site Design Requirements for Commercial Areas

These areas shall be enhanced through specific urban design regulations, including:

- Pedestrian activities such as "al fresco" dining along the sidewalk should be promoted to enhance the character of the commercial area.
- Create pedestrian areas that encourages pedestrian activity while accommodating vehicular requirements.

- The use of pedestrian promenades characterized by outdoor plaza elements between commercial buildings should create unity, cohesiveness and a sense of space while promoting walkable pedestrian activity centers.
- Commercial building entries should incorporate pedestrian elements and amenities such as seating, lighting, and hardscape elements that help create or enhance special pedestrian areas.
- Detention Location and Design for Commercial Areas shall be held to the highest standard of the Stormwater Technical Manual, Appendix N, on file with the City of San Marcos.

6.3.7 Lighting for Commercial Areas

The intent is to enhance day and night time appearances, establish a safe environment for occupants and employees and minimize light pollution, while minimizing glare and light trespass onto adjacent properties. The lighting of all parking areas, pedestrian walkways, entrances, and exterior portions of the site shall be designed for its specific task and shall comply with the provisions of the existing City Code of Ordinances, Subpart B – Land Development Code, Chapter 6, Article 5 attached in the Appendix.

- Lighting shall be: vandal-proof; compatible with building architecture; and, scaled (dimension and intensity) to complement its location context.
- Lighting shall not be obscured by landscaping.

6.3.8 Detention Location and Design for Commercial Areas

- Commercial developments shall be held to the highest standard of the Stormwater Technical Manual, Appendix N, on file with the City of San Marcos.

6.3.9 Refuse and Recycling Dumpsters for Commercial Areas

The intent is to provide convenient access to dumpsters for occupants to reduce littering and outside storage of trash.

- Equal Amenities - Equal amenities shall be provided for trash and recycling.
- Location - All commercial developments shall provide both trash and recycling dumpsters located next to each other. Both shall be located within 500 feet of the back entrance to each ground floor unit measured from the back entrance of the unit and along improved pedestrian paths. The Director may allow alternate facilities, such as chutes, provided that the request is determined to have met the intent of this Section.

Section 7: Parking and Access

7.1 Design

- Large parking areas over 100 spaces shall be divided into smaller “parking blocks” by establishing a clear pattern of internal streets spaced no less than 500 feet apart. Internal streets shall incorporate pedestrian and landscape amenities such as street trees and sidewalks.
- Curbed landscape islands shall be located at the end of each parking block and within each parking aisle at intervals of no greater than one island per 10 spaces. Each landscaped island shall be a minimum of 280 square feet.
- Where appropriate, use formal streetscape treatments such as parkway strips between street and sidewalk, regularly spaced canopy trees, and special paving to denote pedestrian zones.

- Pedestrian ways will be provided within large parking areas, and spaced no less than 500' apart. Pedestrian ways will be wide enough for at least an 8' pedestrian walk with supplemental landscaping for shaded pedestrian access from the parking lot to the surrounding buildings with limited interaction with auto traffic.
- When possible these internal parking medians will also assist in water quality and drainage by employing bio-swale and/or rain garden techniques.

7.2 Access

- Mutual access shall be required between all parking areas.
- Lots with under 250 feet of frontage shall gain access from internal parking lot streets.

Section 8: Screening and Fencing

Trace will employ a variety of screening and fencing types in response to the location and visual exposure to public view.

8.1 Service and Loading Area Screening

- Service and loading areas must be oriented away from public view from collector streets and/or primary parking areas.
- Services and loading areas must be concealed by screens at least as high as the equipment they hide and of color and material matching or compatible with the colors and material found on the façade of the primary building.

8.2 Mechanical Equipment Screening for Commercial Areas

The intent is to place equipment in less visible locations and obscure them from view while maintaining a safe environment.

- Rooftop mechanical equipment shall be hidden or screened with architecturally integral elements at least as high as the equipment to be screened. Parapet roof structures are approved for screening such equipment.
- Mechanical equipment at ground level shall be concealed by screens at least as high as the equipment they hide and of a color and material matching or compatible with the colors and material on the façade of the primary building. Screening may include architecturally integral wing walls and/or landscaping.
- Wall mounted equipment shall be screened with compatible materials and/or painted to match the structure.
- Mechanical equipment shall be located where their acoustics will not be disruptive to occupants or residents.
- All utilities shall be screened from streets and passageways.
- Screening of all electric utilities shall meet the minimum requirements of San Marcos Electric Utility or applicable electric provider's guidelines for granting safe access to equipment for operation and maintenance and for ventilation and cooling.

8.3 Parking Area Screening

- Perimeters of parking areas adjacent to public right of way must be landscaped with
 - shrubs reaching mature height of at least three feet and spaced a maximum of five feet on center or,
 - trees planted 30 feet on center or,
 - in combination with a decorative 3 foot high fence with vines planted every 10' on center.

8.4 I-35 Frontage Screening

- Buildings and service and loading areas backing up to I-35 frontage must be screened with a minimum six foot tall masonry fence with pilasters at a spacing no greater than 12 feet and shrubs reaching a mature height of at least three feet and spaced a maximum of five feet on center and trees planted between 15 and 35 feet on center.

8.5 Other Screening

- Along prominent public views (Posey Road and main spine roads) full masonry or a combination of masonry and durable opaque fence (capped, stained board on metal post or capped, stained concrete type fence) will be used.
- Along perimeters that front on less prominent public views, stained, capped full wood or stained, capped concrete type fences will be used.
- On lots that back to substantial open space metal view fences will be used. In areas where privacy might be a concern, a masonry knee wall (approximately 2' height) would be used and the remaining 4' would be installed as view fence.
- All fencing built throughout the project shall be consistent with design and materials between neighborhood and/or planning areas.
- Internal neighborhood fencing will be capped, stained board on metal fencing for side lots facing streets. Side yard fencing will be standard board fencing by builders.
- If a nonresidential use is adjacent to a residential use other than multiple-family, such nonresidential use shall be screened in accordance with. Non Residential and Multi-Family Screening Required (New Construction).

8.6 Refuse and Recycling Dumpsters Screening for Commercial Areas

- Screening shall be designed to reduce the escape of trash. Material and design shall be consistent with the primary building.
- All refuse and recycling dumpsters shall be screened from view from the street or public rights-of-way with landscaping or fencing at least as high as the dumpster.
- Approved screening techniques include privacy fences, evergreen vegetative screens, landscape berms, existing vegetation or any combination thereof. In any case in which a fence/wall is constructed to provide screening, landscaping elements shall be incorporated along a majority of the fence/wall.

Section 9: Landscaping and Environmental

9.1 Landscape Standards

The Development shall comply with 6.1.1.4. Required Landscape Standards attached in the Appendix. If the provisions of the standards below are inconsistent with provisions found in the attached existing City Code of Ordinances, the standards below shall control.

9.1.1 Street Trees

- Street trees shall be provided along Street Sections AA, BB, CC, DD and EE at one (1) shade tree per 30 lineal feet of street frontage. Shade trees shall range in caliper size of 2" to 4" with an average caliper size of 3" and be spaced at 30' on center.
- Street trees shall be provided within the along Enhanced Residential Streets at one (1) shade tree per 50 lineal feet of street frontage, as required by Section 6.1.1.4(2) of the LDC. Shade trees shall be a minimum caliper size of 2".

- Along Street Sections AA, BB, CC, DD and EE ornamental trees shall be provided at one (1) ornamental tree per five (5) shade trees and be a minimum caliper size of 2”.
- Trees installed along Street Sections AA, BB, CC, DD and EE and maintained by the HOA, will be watered with an HOA installed, monitored and maintained irrigation system. The trees will be watered by bubblers (2/shade tree and 1/ornamental tree).
- ~~On single-family lots 40 feet in width or less located on an Enhanced Residential Street,~~ only one street tree will be required per lot. ~~and one street tree may count towards the~~ Additionally, two shade trees ~~are per lot~~ required ~~per lot~~ by Section 6.1.1.4(d)(1) of the LDC. ~~One of these shade trees may count towards the one required street tree.~~
- Street trees located along Enhanced Residential Streets shall be installed by the builder and shall be warrantied by the builder for a minimum period of 2 years.
- Street trees shall be provided along all Posey Road and Old Bastrop Road frontage at a rate of one (1) tree per 50 feet of linear frontage.

9.1.2 Parking Lot Trees

- One parking lot tree shall be provided per 10 spaces.

9.1.3 Median Landscaping

- Street trees shall be provided within the median of Street Sections AA, BB, DD, and EE at one (1) ornamental tree per 30 lineal feet of street frontage; minimum of 2” caliper.
- Street trees shall be provided within the median of Street Sections CC at two (2) trees per 30 lineal feet of street frontage; minimum of 2” caliper. A minimum of 50% of required street trees may be ornamental.
- Median trees shall be above and beyond street tree requirements. Landscaping will be xeriscaped (ref. 9.2.1) and compatible with the development.

9.1.4 Single Family Home Landscaping

- Landscaping on a corner lot shall present a front façade to both streets. The Developer and then the HOA will monitor landscapes through the requirements of the HOA guidelines and require healthy landscapes as part of the requirements of approval of a submitted landscape plan.
- Builders shall make the “Sensible Landscaping for Central Texas” adopted by the Home Builders Association of Greater Austin available to all homebuyers.

9.1.5 Enhanced Landscaping Features

The Standards outlined below reflect superior requirements than the existing City Code of Ordinances. If the provisions of the standards below are inconsistent with provisions found in the attached existing City Code of Ordinances, the standards below shall control.

- New landscaped areas shall be prepared with at least 6 inches of topsoil. Native topsoil shall be a blend of 75% soil and 25% compost that is fertile and friable. Soil should be free of stones over 1 inch in diameter, lumps, refuse, plants or their roots, sticks, noxious weeds, salts, soil sterilants or other material that is detrimental to plant growth.
- Whenever possible, direct storm water/rain water runoff from hard surfaces such as; pavers, concrete, asphalt, decking, roofs, or other hard materials to landscape areas. Landscape areas include; plant beds, gardens, turf grass, native grasses. Draining the storm water/rain water runoff to an area that is aggregate is also beneficial. Consider using pervious pavement in lieu of traditional hard surfaces to promote the storm water /rain

water infiltrating into the soil in individual yards and in large landscape areas within the multi family, commercial and business park areas.

- The project shall adhere to and incorporate the Sensible Landscaping for Central Texas water conservation practices adopted by the Home Builders Association of Greater Austin [attached within the appendix of this document](#).

9.2 Environmental Standards

9.2.1 Xeriscaping

Striving toward water conservation and low impact development will be part of the Design Standard at Trace. Native or adapted vegetation used in coordination with efficient drip and controlled spray irrigation will be one tool used in the Community. The irrigation systems will be weather adaptive with solar, rain and soil moisture sensors as appropriate.

There will be wide areas along the natural drainage ways that will be enhanced with appropriate plant species to provide habitat and forage opportunities for wildlife native to the area. These areas will have multiple opportunities for educational and interpretive signage for the Community.

Water Harvesting will be employed at the Amenity Center. The school will be encouraged to harvest water from the roof and condenser units to supplement irrigation for watering the landscape around the school. This provides an educational opportunity for the Community and the public at large.

Where soil conditions permit, all plant material selections and irrigation design will employ water conservation techniques including: native or adaptive plant selection from City of San Marcos Preferred Plant List. Irrigation will utilize soil moisture sensors, drip irrigation in beds, MPR Rotators on turf areas, weather synchronized irrigation controllers.

9.2.2 Plant Palette

- All plants will be selected from the City of San Marcos, Land Development Code, Technical Manual, Article 2: Preferred Plant list as attached in the Appendix. No plants from Division 3: Discouraged Planting Materials will be used.
- Perennial grasses and wildflowers will be used in large areas where irrigation would be impractical or ill-advised.
- Ornamental plants, grasses and trees will be limited to higher use areas most travelled by pedestrian or vehicular traffic.

9.2.3 Erosion Control/Water Quality Benefits from Detention Ponds

Trace storm water management programs are aimed at controlling increased urban runoff generated by the development. More frequent flooding, increased rates and volumes of runoff, increased stream channel erosion and degradation, increased sedimentation and increased water pollution are all problems identified with development.

The proposed storm water management facilities such as detention ponds have proven to significantly reduce downstream flooding, reduce sedimentation and pollutant loads, and provide debris removal which all benefit water quality.

Section 10: Lighting

10.1 Street Lighting

Lighting should be provided to improve the safety of streets or alleys and the ease and comfort of operation. Properly design street lighting and parking lot lighting will improve comfort and visibility at night. This should improve and encourage vehicular and pedestrian movement.

- To preserve the night sky, the sub-divider will install a standard provider street light at all intersections along the spine road(s) at intervals no less than 600 feet along the spine road(s).
- Streetlights shall be installed by the sub-divider at the end of cul-de-sacs and shall have no greater distance than 600 feet between them within or abutting the subdivision.

10.2 Non-Street Lighting

The intent is to enhance day and night time appearances, establish a safe environment for residents, occupants and employees and minimize light pollution, while minimizing glare and light trespass onto adjacent properties.

- Lighting for security and visibility shall be installed at the subdivider's discretion within parks and open spaces.
- The lighting of all parks, open spaces, parking areas, pedestrian walkways, entrances, and exterior portions of the site shall be designed for its specific task and shall comply with the provisions of Chapter 6, Article 5 of the City of San Marcos Development code attached in the Appendix.
- Lighting shall be: vandal-proof; compatible with building architecture; and, scaled (dimension and intensity) to complement its location context.
- Lighting shall not be obscured by landscaping.
- Lighting for security will be dark sky compatible, and energy conserving.
- To preserve the night sky, lighting shall be compatible with the design that may employ programmed power reduction in combination with motion sensors to allow for maximum reduction in energy use.
- Non-Street lighting shall be a coordinated family of fixtures that are compatible with the overall look and feel of Trace.

Section 11 Signage

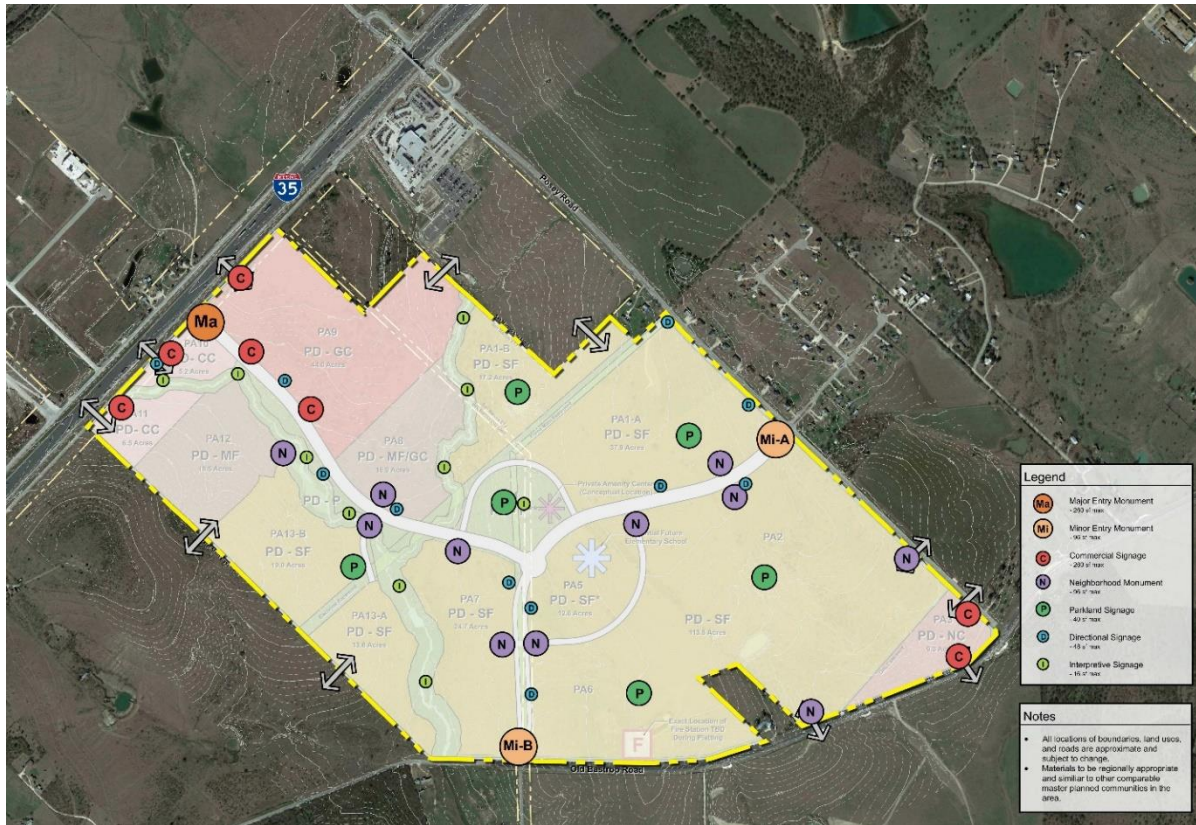
There will be a hierarchy of signage and monumentation throughout the project. Public signage such as traffic signs, street signs and safety signs will comply with current city and traffic standards. The signage described below and shown in Illustration 40: Entry Monument and Signage Plan are related to only private signage. Conceptual locations and sign types are included in that illustration.

Signage shall comply with Article 3: Signs within the City of San Marcos Land Development Code. If the provisions of the standards below are inconsistent with the provisions of the Land Development Code, the standards below shall control.

- The signs will meet applicable safety codes, however they will be designed to reinforce the vision and aesthetic of the Trace Community and tie into the overarching aesthetic of the surrounding amenities and landscape.
- Electronic and flashing signage shall be prohibited.

- All signs shall be subject to applicable ordinances except as specifically varied herein and no private signs shall be permitted in any public right-of-way.

Illustration 40: Entry Monument and Signage Plan



11.1 Entry Monuments

Trace's location within the City of San Marcos requires a certain level of responsibility on the part of the community to represent and help form an impression of San Marcos. With this in mind the Entry Monuments and finishes will be commensurate with this responsibility. Conceptual locations and sign types are included in Illustration 17.

- There will be a hierarchy of signage and monumentation throughout the project. A comprehensive Entry Monument and Signage Master Plan Illustration is shown above.
- The entry monuments will be of a size, scale and finish comparable to quality Master Planned Communities in the area (Belterra, Blanco Vista, Sunfield for example).
- Signs may be lit using dark sky compliant techniques. Full cut-off down lights, halo effect lighting or shielded low level lighting is acceptable
- Dimensional and height max to be provided.

Potential materials for signage shall be limited to:

- Stone Masonry
- Brick Masonry
- Metal (Aluminum, Corten, Raw Steel, or Stainless Steel) for letter and possible sign background.
- Wood (limited use, treated, stained or painted and protected from decay)
- Stucco
- Concrete (Board Formed, Stained)

11.1.1 Major Entry Monumentation (Ma)

The symbol indicated as “Ma” on the Signage Plan will be a major entry monument along I-35 for the Trace Community.

- The SF of the signage will be calculated as the smallest rectangle around the lettering comprising the message.
- Logo SF will be calculated separately, however the cumulative SF of the Sign and Logo will be no greater than 260 sf (each side if two sided).
- The sign height will be calculated using the highest elevation of the lettering above grade. The logo may be higher.
- The structure will be limited to 35’ in height.



Potential materials shall be limited to:

- Stone Masonry
- Brick Masonry
- Metal (Aluminum, Corten, Raw Steel, or Stainless Steel) for letter and possible sign background.
- Wood (limited use, treated, stained or painted and protected from decay)
- Stucco
- Concrete (Board Formed, Stained)

11.1.2 Minor Entry Monumentation (Mi-A)

The symbol indicated as “Mi-A” on the Signage Plan will be a minor entry monument for Posey Road to the Trace Community (Residential). This monument will serve as the main entry monument for the residential section of Trace and likely as the sole monument for the initial phase of the project.



- The SF of the signage will be calculated as the smallest rectangle around the lettering comprising the message.
- Logo SF will be calculated separately, however the cumulative SF (sign and logo) will be no greater than 96 sf (each side if two sided).
- The sign height will be calculated using the highest elevation of the lettering above grade. The logo may be higher.
- The structure supporting the sign will be no taller than 6' and will not be regarded as part of the effective area of the sign.
- The height will be measured from the grade on which the sign stands or the adjacent roadway elevation whichever is higher.

Potential materials shall be limited to:

- Stone Masonry
- Brick Masonry
 - Metal (Aluminum, Corten, Raw Steel, or Stainless Steel) for letter and possible sign background.
- Wood (limited use, treated, stained or painted and protected from decay)
- Stucco
- Concrete (Board Formed, Stained)

11.1.3 Minor Entry Monumentation (Mi-B) *see examples in 11.1.2*

The symbol indicated as “Mi-B” on the Signage Plan will be a minor entry monument for Old Bastrop Road to the Trace Community (Residential). This monument will serve as the secondary entry monument for the residential section of Trace. See the photo examples on page 57, Minor Entry Monumentation (Mi-A).

- The SF of the signage will be calculated as the smallest rectangle around the lettering comprising the message.
- Logo SF will be calculated separately, however the cumulative SF will be no greater than 96 sf (each side if two-sided).

- The height will be calculated using the highest elevation of the lettering above grade. The logo may be higher.
- The structure supporting the sign will be no taller than 6'.
- The height will be measured from the grade on which the sign stands or the adjacent roadway elevation whichever is higher.

Potential materials shall be limited to:

- Stone Masonry
- Brick Masonry
- Metal (Aluminum, Corten, Raw Steel, or Stainless Steel) for letter and possible sign background.
- Wood (limited use, treated, stained or painted and protected from decay)
- Stucco
- Concrete (Board Formed, Stained)



11.2 Commercial Signage (C):

The symbols indicated as “C” on the Signage Plan represents signage for the Commercial Parcels of Trace. These monuments will serve to announce major single occupants or multiple tenant spaces in the areas designated on the land plan.

- The square footage (SF) of the signage will be calculated as the smallest rectangle around the lettering comprising the message (logo SF will be calculated separately).
- The height will be calculated using the highest elevation of the lettering above grade. The logo may be higher.
- The structure supporting the sign will be no taller than 20' along I-35.
- Signage along I-35 will be complimentary and sub-servient to the Major Entry Feature designated at I-35 and be limited to 260 sf (each side if two sided).
- Signage along other roads (Posey and Old Bastrop) will be limited to 120 sf (each side if two sided) and 12' height.
- The height will be measured from the grade on which the sign stands or the adjacent roadway elevation whichever is higher.



Potential materials shall be limited to: (excluding temporary marketing signs):

- Stone Masonry
- Brick Masonry
- Metal (Aluminum, Corten, Raw Steel, or Stainless Steel) for letter and possible sign background.

- Wood (limited use, treated, stained or painted and protected from decay)
- Stucco
- Concrete (Board Formed, Stained)

11.3 Temporary Marketing Signage (C & MI-A):

The symbols indicated as “C” and the symbol indicated “MI-A” will be used for temporary marketing purposes while construction is ongoing. These signs will be removed by subsequent permanent monuments as the project progresses.

- The square footage (SF) of the signage will be calculated as the smallest rectangle around the lettering comprising the message (logo SF will be calculated separately).
- The height will be calculated using the highest elevation of the lettering above grade. The logo may be higher.
- The structure supporting the sign will be no taller than 20' along I-35.
- The height will be measured from the grade on which the sign stands or the adjacent roadway elevation whichever is higher.



- Temporary Signage for premises located along I-35 will be limited to 260 sf (each side if two sided).
- Temporary Signage for premises located along Posey and Old Bastrop Roads will be limited to 120 sf (each side if two sided) and 15' height.
- Temporary signs for all other premises shall not exceed 32 square feet.

Potential materials for temporary marketing signs shall be

limited to:

- Metal (Aluminum, Corten, Raw Steel, or Stainless Steel) for letter and possible sign background.
- Wood (limited use, treated, stained or painted and protected from decay)

11.4 Neighborhood Signage (N)

The symbol indicated as “N” on the Signage Plan represents signage for designated residential portions of Trace. These monuments will serve to announce various sections of Trace. The signs will be similar to “village” signs seen typically in Master Planned Communities.

- The signage will be complimentary and sub-servient to the Entry Monumentation.
- The height of the lettering will be no greater than 6’ above grade/or adjacent road elevation.
- The logo will be treated separately, but the SF of both the logo and lettering will not exceed 40 sf (each side if two sided).
- The structure height will be limited to 10’.
- The height will be measured from the grade on which the sign stands or the adjacent roadway elevation whichever is higher.



Potential materials shall be limited to:

- Stone Masonry
- Brick Masonry
- Metal (Aluminum, Corten, Raw Steel, or Stainless Steel) for letter and possible sign background.
- Wood (limited use, treated, stained or painted and protected from decay)
- Stucco
- Concrete (Board Formed, Stained)

11.5 Parkland Signage (P)

The symbol indicated as “P” on the Signage Plan represents signage for designated parkland portions of Trace. These monuments will serve to announce various parklands of Trace. The signs will be similar to “village” signs seen typically in Master Planned Communities.



- The signage will be complimentary and sub-servient to the Entry Monumentation.
- The height of the lettering will be no greater than 6' above grade/or adjacent road elevation. The logo will be treated separately, but the SF of both the logo and lettering will not exceed 40 sf.
- The structure height will be limited to 8'.
- The height will be measured from the grade on which the sign stands or the adjacent roadway elevation whichever is higher.

Potential materials shall be limited to:

- Stone Masonry
- Brick Masonry
 - Metal (Aluminum, Corten, Raw Steel, or Stainless Steel) for letter and possible sign background.
 - Wood (limited use, treated, stained or painted and protected from decay)
- Stucco
 - Concrete (Board Formed, Stained)

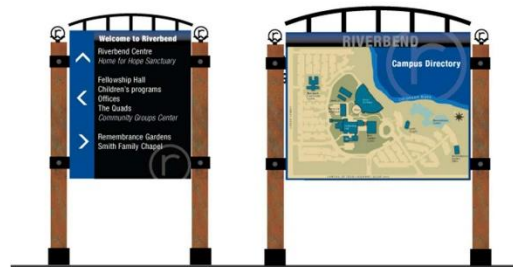
11.6 Directional Signage (D)

The symbol indicated as “D” on the Signage Plan represents directional signage to be placed throughout Trace. These monuments will serve to announce various elements of Trace. These signs will be concise, directional and informative to offer assistance to visitors to orient themselves to the major elements of Trace.

- The height of the lettering will be no greater than 6' above grade/or adjacent road elevation.
- The SF of the entire composition of sign and structure will be limited to 48 sf.
- The structure height will be limited to 8'.
- The height will be measured from the grade on which the sign stands or the adjacent roadway elevation whichever is higher.

Potential materials shall be limited to:

- Stone Masonry



- Brick Masonry
- Metal (Aluminum, Corten, Raw Steel, or Stainless Steel) for letter and possible sign background.
- Wood (limited use, treated, stained or painted and protected from decay)
- Stucco
- Concrete (Board Formed, Stained)
- Izone or similar signage material for print

11.7 Interpretive Signage (I)

The symbol indicated as “I” on the Signage Plan represents interpretive signage to be placed throughout Trace. These monuments will serve as educational elements along the trails, in the parks and wherever a unique opportunity arises. For example, wildflower areas, a short explanation of the history of Trace and/or San Marcos, or to help identify birds along the preserved or enhanced natural areas throughout Trace.



- The signs will be identifiable, but blend into the landscape with a size no greater than 16 sf for any one sign.
- The height will be measured from the grade on which the sign stands or the adjacent roadway elevation whichever is higher.

Potential materials shall be limited to:

- Stone Masonry
- Brick Masonry
 - Metal (Aluminum, Corten, Raw Steel, or Stainless Steel) for letter and possible sign background.
 - Wood (limited use, treated, stained or painted and protected from decay)
- Stucco
 - Concrete (Board Formed, Stained) for print
- Izone or similar signage material

11.8 Signage comparisons

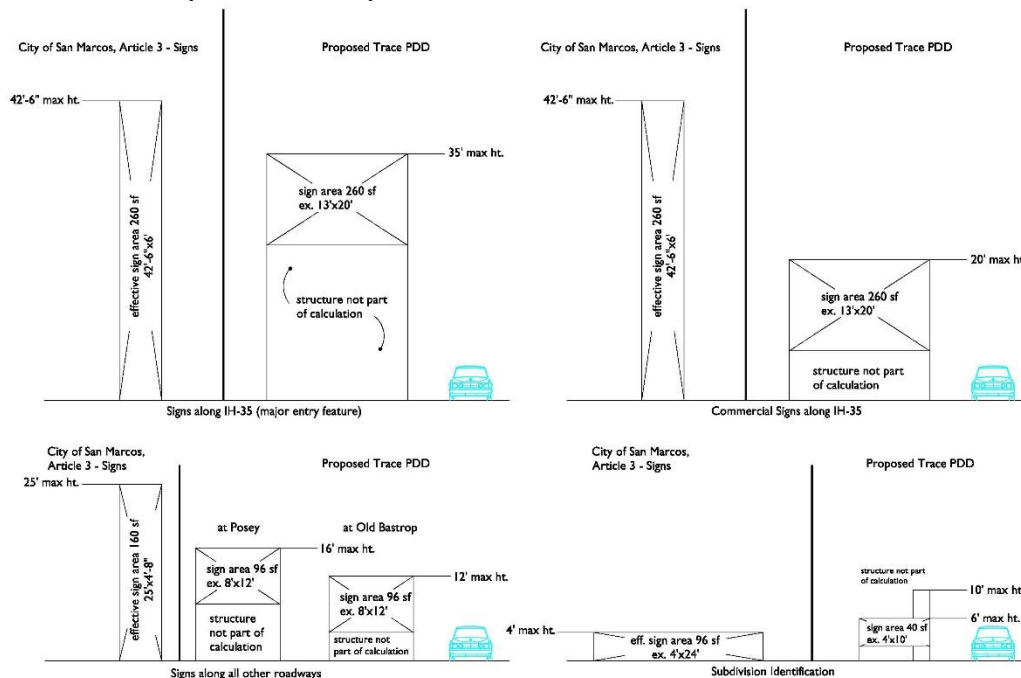
City of San Marcos Article 3, Signs

Signage Requirements for - On-Premises Freestanding Signs	Height	Square Feet	Height	Square Feet
Along I-35	42.5	260	35.0	260
Commercial Signage along I-35	42.5	260	20.0	260
Along Highways 123, 21 and 80	30.0	160	n/a	n/a
Along All Other Roadways	25.0	120	16.0	96
Subdivision Identification	4.0	96	8.0	40

Notes

- PDD signage square foot calculation is defined as the area of the smallest rectangle that encompasses the entire text of the sign.
- The logo may be calculated using a separate rectangle, but the cumulative area of both the logo and the text will meet the stated square foot area.
- The height of the signage element will be measured from natural grade at the bottom of the sign to the highest point of the sign whether the highest point be structure, text or logo.
- If adjacent road grade is more than 3' above the proposed location of the sign, the sign height will be measured from the road grade elevation.
- Each side of a two-sided sign is allowed the stated square footage.
- In case of conflict quantities shown on exhibit shall prevail

Illustration 44: Comparison of City Standards to Trace Standards



Section 12: Special Standards and Administration

12.1 Concept Plan Revisions

The Concept Plan may be revised in accordance with the existing City Code of Ordinances, Subpart B – Land Development Code, Chapter 1, Article 5, Division 3 – Petition for Planned Development District, Section 6 – Amendments and Relief Measures attached in the Appendix.

12.2 Concept Plat

A concept or Subdivision Concept Plat shall be submitted to the Planning Department for approval prior to the submittal of a Preliminary Plat in accordance with the existing City Code of Ordinances, Subpart B – Land Development Code, Chapter 1, Article 6, Division 2 – Subdivision Concept Plats attached in the Appendix.

12.3 Architectural Regulations and Site Plan Regulation Checklist

A concise checklist shall be developed with Planning Department Staff to enforce architectural regulations and site plan regulations and to provide efficient staff review at the time of permit/ plan review. This concise checklist shall be completed prior to the first Concept Plat submittal.

12.4 Undergrounding of Utilities

All dry utilities shall be undergrounded in the Trace community.

12.5 Residential Sales Office(s)

“**Residential Sales Office**” shall mean a structure or dwelling in a developing subdivision, located on a legal lot of record, and is limited to temporary use as a sales office for the subdivision and to provide an example of the dwellings which have been built or which are proposed to be built within the same subdivision. This use may operate until such time all available lots and or structures within the subdivision are sold. Temporary permits for a specific time and location as determined may be issued by the building official and shall be subject to review and renewal for reasonable cause.

12.6 Construction Field Office Buildings

“**Construction Field Office**” shall mean a structure or shelter used in connection with a development or building project for housing on the site of temporary administrative and supervisory functions and for sheltering employees and equipment. Temporary permits for a specific time and location as determined may be issued by the building official and shall be subject to review and renewal for reasonable cause.

12.7 Temporary Construction Buildings

Temporary buildings and temporary building material storage areas to be used for construction purposes may be permitted for a specific period of time in accordance with a permit issued by the Building Official and subject to periodic renewal by the Building Official for cause shown. Upon completion or abandonment of construction or expiration of a permit, the field offices or buildings and material storage areas shall be removed to the satisfaction of the Building Official.

12.8 Conditional Use Permits

Conditional use permits required for uses within Planning Area 8, also labeled as PD-MF/GC on the Concept Plan, as listed in the Land Use Matrix in Section 13.2, shall be subject to final approval by City Council following recommendation by the Planning and Zoning Commission.

12.9 Occupancy Restrictions

Occupancy Restrictions. All dwelling units within the Multi Family areas on the Project Site shall be restricted to occupancy by no more than two (2) persons not related by blood, legal adoption,

marriage or conservatorship or three (3) persons in a three bedroom unit not related by blood, legal adoption, marriage or conservatorship. The provisions of this section shall be enforced through the residential lease agreements and occupancy shall be based upon the lessee(s) indicated on the residential lease. No units will be rented by the bedroom. Additionally, failure to enforce the provisions of this section shall be considered a violation of this PDD. Single family residential shall meet all other occupancy requirements adopted in the Land Use Code.

Section 13: Appendixes

13.1 Legal Description

BEING A 417.630 ACRE TRACT OUT OF THE WILLIAM H. VAN HORN SURVEY, ABSTRACT NO. 464, HAYS COUNTY, TEXAS, AND BEING A PORTION OF THOSE CERTAIN 100.22 ACRE, 67.53 ACRE, 248.77 ACRE, AND 5.01 ACRE TRACTS CONVEYED TO JOQ-SAN MARCOS VENTURES L.P. BY DEED OF RECORD IN VOLUME 1820, PAGE 715, OF THE OFFICIAL PUBLIC RECORDS OF HAYS COUNTY, TEXAS; SAID 417.630 ACRES BEING MORE PARTICULARLY DESCRIBED BY METES AND BOUNDS AS FOLLOWS:

BEGINNING, at a 1-inch iron pipe found in the east right-of-way line of Interstate Highway 35 (300' R.O.W.), being the called northeast corner of that certain 85.00 acre tract conveyed to San Marcos 197 Acre Associates, LLC, by Deed of record in Volume 4015, Page 562, of said Official Public Records, also being the northwest corner of said 248.77 acre tract, for the northwesterly corner hereof;

THENCE, N43°34'33"E, along said east right-of-way line of Interstate Highway 35, being the north line of said 248.77 acre tract, a distance of 2222.49 feet to a 1/2-inch iron rod found near the base of a fence post at the called northeast corner of said 248.77 acre tract, being the northwest corner of that certain 14.86 acre tract conveyed to Kimberley Gunnarson, by Deed of record in Volume 3281, Page 47, of said Official Public Records, for the northeasterly corner hereof;

THENCE, S45°57'08"E, leaving said east right-of-way line, along the west line of said 14.86 acre tract, being an east line of said 248.77 acre tract, generally with the remnants of an old barbed-wire fence (a new barbed-wire fence meanders parallel and several feet to the west), a distance of 976.48 feet to a calculated point at the called southwest corner of said 14.86 acre tract, being an angle point of said 248.77 acre tract, for an angle point hereof, from which an 8-inch cedar fence post found bears S45°57'08"E, a distance of 0.87 feet;

THENCE, N44°02'46"E, along the south line of said 14.86 acre tract, generally with a barbed-wire fence, at 14.92 feet passing a 1/2-inch iron rod found at the base of an 8-inch cedar fence post, being approximately at an angle point in the east line of said 248.77 acre tract and the approximate northwest corner of said 67.53 acre tract, and continuing along the north line of said 67.53 acre tract for a total distance of 673.37 feet to a 1/2-inch iron rod found at the base of a leaning 10-inch cedar fence post at the called southeast corner of said 14.86 acre tract, being the northeast corner of said 67.53 acre tract, also being in the west line of Lot 2, Final Plat of San Marcos Toyota Subdivision, of record in Book 9, Pages 155-156, of the Plat Records of Hays County, Texas, for an angle point hereof;

THENCE, S46°27'25"E, in part along the west line of said Lot 2 and in part along the remainder of that certain 56.288 acre tract conveyed to JMC Realty, LP, by Deed of record in Volume 1662, Page 628, of said Official Public Records, being the east line of said 67.53 acre tract, generally with a barbed-wire fence as called in said Volume 1662, Page 628 and Volume 1820, Page 715, a distance of 181.47 feet to a 3-inch cedar fence post found, for an angle point hereof;

THENCE, continuing along the west line of said 56.288 acre tract, being the east line of said 67.53 acre tract, generally with a barbed-wire fence as called in said Volume 1662, Page 628 and said Volume 1820, Page 715, the following four (4) courses and distances:

1) S46°59'15"E, a distance of 232.69 feet to an 8-inch cedar fence post found, for an angle point hereof;

2) S49°30'26"E, deviating from a re-established fence line over a creek, a distance of 126.95 feet to a 6-inch cedar fence post found, for an angle point hereof;

3) S47°20'32"E, rejoining and continuing generally with a barbed-wire fence line, a distance of 387.84 feet to a 1/2-inch iron rod found in the base of a hackberry tree, as called in said Volume 1662, Page 628, for an angle point hereof;

4) S47°39'57"E, a distance of 528.76 feet to a 1/2-inch iron rod found at the called southwest corner of said 56.288 acre tract, being at the base of a 10-inch cedar fence post at a called angle point in the east line of said 67.53 acre tract, for an angle point hereof;

THENCE, N44°31'00"E, along the south line of said 56.288 acre tract, being an east line of said 67.53 acre tract, generally with a barbed-wire fence, a distance of 646.04 feet to a 1/2-inch iron rod found at an angle point in the east line of said 67.53 acre tract, being the northwest corner of that certain 1.000 acre tract conveyed to Wilford L. Wootan, Jr., et ux, by Deed of record in Volume 536, Page 849, of the Real Property Records of Hays County, Texas, for an angle point hereof;

THENCE, S46°59'32"E, leaving the south line of said 56.288 acre tract, along the west line of said 1.000 acre tract, being an east line of said 67.53 acre tract, generally with a barbed-wire fence, a distance of 280.51 feet to a 1/2-inch iron rod found at the base of a fence post at the called southwest corner of said 1.000 acre tract, for an angle point hereof;

THENCE, N47°03'15"E, along the south line of said 1.000 acre tract and that certain 1.335 acre tract conveyed to Wilford L. Wootan, Jr., et ux, by Deed of record in Volume 401, Page 769, of said Real Property Records, being an east line of said 67.53 feet, generally with a barbed-wire fence, a distance of 335.24 feet to a 1/2-inch iron rod with "Capital Surveying Company" cap found at the northwest corner of that certain 0.8521 acre tract

conveyed to Hays County, Texas for right-of-way purposes, by Deed of record in Volume 2927, Page 699, of said Official Public Records, being the southwest right-of-way line of Posey Road (R.O.W. varies), for an angle point hereof;

THENCE, leaving the south line of said 1.335 acre tract, over and across said 67.53 acre tract and said 100.22 acre tract, along said southwest right-of-way line of Posey Road, being the west line of said 0.8521 acre tract, and those certain 0.5415 acre and 2.4004 acre tracts conveyed to Hays County, Texas for right-of-way purposes, by said Deed of record in Volume 2927, Page 699, the following eight (8) courses and distances:

1) S41°53'43"E, a distance of 78.28 feet to a disturbed 1/2-inch iron rod found at the point of curvature of a curve to the left;

2) Along said curve, having a radius of 6075.00 feet, a central angle of 04°47'50", an arc length of 508.66 feet, and a chord which bears S44°20'45"E, a distance of 508.51 feet to a 1/2-inch iron rod with "Capital Surveying Company" cap found at the point of tangency of said curve;

3) S46°43'43"E, at 327.46 feet passing a 1/2-inch iron rod found on the south line of said 67.53 acre tract, being the north line of said 100.22 acre tract, and continuing for a total distance of 865.99 feet to a calculated point at the point of curvature of a curve to the right;

4) Along said curve, having a radius of 15031.48 feet, a central angle of 00°34'12", an arc length of 149.56 feet, and a chord which bears S46°08'19"E, a distance of 149.56 feet to a 1/2-inch iron rod with "Capital Surveying Company" cap found at the point of tangency of said curve;

5) S46°08'26"E, a distance of 1770.49 feet to a calculated point at the point of curvature of a curve to the left;

6) Along said curve, having a radius of 14862.04 feet, a central angle of 00°34'49", an arc length of 150.53 feet, and a chord which bears S46°25'49"E, a distance of 150.53 feet to a 1/2-inch iron rod with "Capital Surveying Company" cap found at the point of tangency of said curve;

7) S46°41'07"E, a distance of 195.22 feet to a 1/2-inch iron rod with "Capital Surveying Company" stamp found near the base of a 2-inch steel fence post, for an angle point hereof;

8) S01°32'03"E, a distance of 28.03 feet to a calculated point at the southwest corner of said 2.4004 acre tract, being in the south line of said 100.22 acre tract, also being the intersection of said southwest right-of-way line of Posey Road and the northeast right-of-way line of County Road 266/Old Bastrop Highway/El Camino Real (R.O.W. varies), for the southeasterly corner hereof;

THENCE, along the used and occupied northeast right-of-way line of County Road 266, being the called south line of said 100.22 acre tract, generally with a barbed-wire fence, the following two (2) courses and distances:

- 1) S43°45'05"W, a distance of 70.45 feet to an 8-inch cedar fence post found, for an angle point hereof;
- 2) S44°04'56"W, a distance of 207.09 feet to a calculated point at the point of curvature of a curve to the right, being near the base of a 2-inch steel fence post, also being the east corner of that certain 0.0123 acre tract conveyed to Hays County, Texas for right-of-way purposes, by Deed of record in Volume 4600, Page 118, of said Official Public Records;

THENCE, continuing along said northeast right-of-way line, over and across said 100.22 acre tract, along said curve to the right, having a radius of 950.00 feet, a central angle of 08°05'19", an arc length of 134.11 feet, and a chord which bears S62°20'44"W, a distance of 134.00 feet to a calculated point near the base of a 2-inch steel fence post at the west corner of said 0.123 acre tract, being on the called south line of said 100.22 acre tract, for an angle point hereof;

THENCE, continuing along the used and occupied northeast right-of-way line of County Road 266, being the called south line of said 100.22 acre tract, generally with a barbed-wire fence, the following four (4) courses and distances:

- 1) S68°39'21"W, a distance of 769.76 feet to an 8-inch cedar fence post found, for an angle point hereof;
- 2) S69°15'47"W, a distance of 221.52 feet to a 60D nail found in an 8-inch cedar fence post, for an angle point hereof;
- 3) S70°25'00"W, a distance of 127.68 feet to an 8-inch cedar fence post found, for an angle point hereof;
- 4) S69°14'26"W, a distance of 228.32 feet to a calculated point at the called southwest corner of said 100.22 acre tract, being the southeast corner of that certain 5.0000 acre tract conveyed to Pleasant F. Rexroat and wife, Elwanda J. Rexroat, by Deed of record in Volume 1898, Page 98, of said Official Public Records, for an angle point hereof;

THENCE, N45°06'19"W, leaving said northeast right-of-way line of County Road 266, along the called west line of said 100.22 acre tract, generally with the remnants of an old barbed-wire fence (new wire fence meanders approximately parallel and several feet southwest of old fence), a distance of 85.52 feet to a 6-inch cedar fence post found leaning, for an angle point;

THENCE, N46°36'04"W, continuing generally with the remnants of an old-barbed wire fence as called in said Volume 1820, Page 715, a distance of 642.34 feet to a 1/2-inch iron pipe found near the base of a fence post, being the called northeast corner of said Rexroat 5.0000 acre tract, also being an angle point in the occupied east line of said 248.77 acre tract, for an angle point hereof;

THENCE, S70°39'07"W, leaving the occupied west line of said 100.22 acre tract, along the called and occupied north line of said Rexroat 5.0000 acre tract, being the occupied east line of said 248.77 acre tract, generally with a barbed-wire fence, a distance of 329.36 feet to a 1/2-inch iron pipe found near the base of a fence post at the called northwest corner of said Rexroat 5.0000 acre tract, being the occupied northeast corner of said 5.01 acre tract, for an angle point hereof;

THENCE, S46°20'51"E, leaving the east line of said 248.77 acre tract, along the called and occupied west line of said Rexroat 5.0000 acre tract, being the occupied east line of said 5.01 acre tract, generally with a barbed-wire fence, a distance of 747.43 feet to a 1/2-inch iron pipe found near the base of a fence post at the called southwest corner of said Rexroat 5.0000 acre tract, being the southeast corner of said 5.01 acre tract, also being in said used and occupied northeast right-of-way line of County Road 266, for an angle point hereof;

THENCE, S72°25'29"W, along the used and occupied northeast right-of-way of County Road 266, being the called south line of said 5.01 acre tract, generally with a barbed-wire fence, a distance of 335.30 feet to a calculated point in a fence line, being the called southwest corner of said 5.01 acre tract, being the occupied southeast corner of said 248.77 acre tract, from which a 1/2-inch iron pipe found bears N46°20'31"W, a distance of 2.00 feet, for an angle point hereof;

THENCE, continuing along the used and occupied northeast right-of-way line of County Road 266, being the called south line of said 248.77 acre tract, generally with a barbed-wire fence, the following nine (9) courses and distances:

- 1) S71°40'15"W, a distance of 115.86 feet to a calculated point in a fence line, for an angle point hereof;
- 2) S76°06'10"W, a distance of 46.03 feet to an 8-inch cedar fence post found, for an angle point hereof;
- 3) S86°28'05"W, a distance of 428.20 feet to an 8-inch cedar fence post found, for an angle point hereof;
- 4) N89°34'56"W, a distance of 321.83 feet to a T-post found, for an angle point hereof;
- 5) N89°02'24"W, a distance of 554.59 feet to a calculated point in a fence line, for an angle point hereof;
- 6) S89°48'27"W, a distance of 68.91 feet to an 8-inch creosoted fence post found, for an angle point hereof;
- 7) N81°53'25"W, a distance of 50.53 feet to an 8-inch creosoted fence post found, for an angle point hereof;
- 8) N88°55'45"W, at approximately 713 feet leaving said barbed-wire fence line, and continuing for a distance of 802.47 feet to a 1/2-inch iron rod with "Macias" cap found, for an angle point hereof;
- 9) N70°06'57"W, a distance of 39.04 feet to an 8-inch creosoted fence post found, for the southwesterly corner hereof;

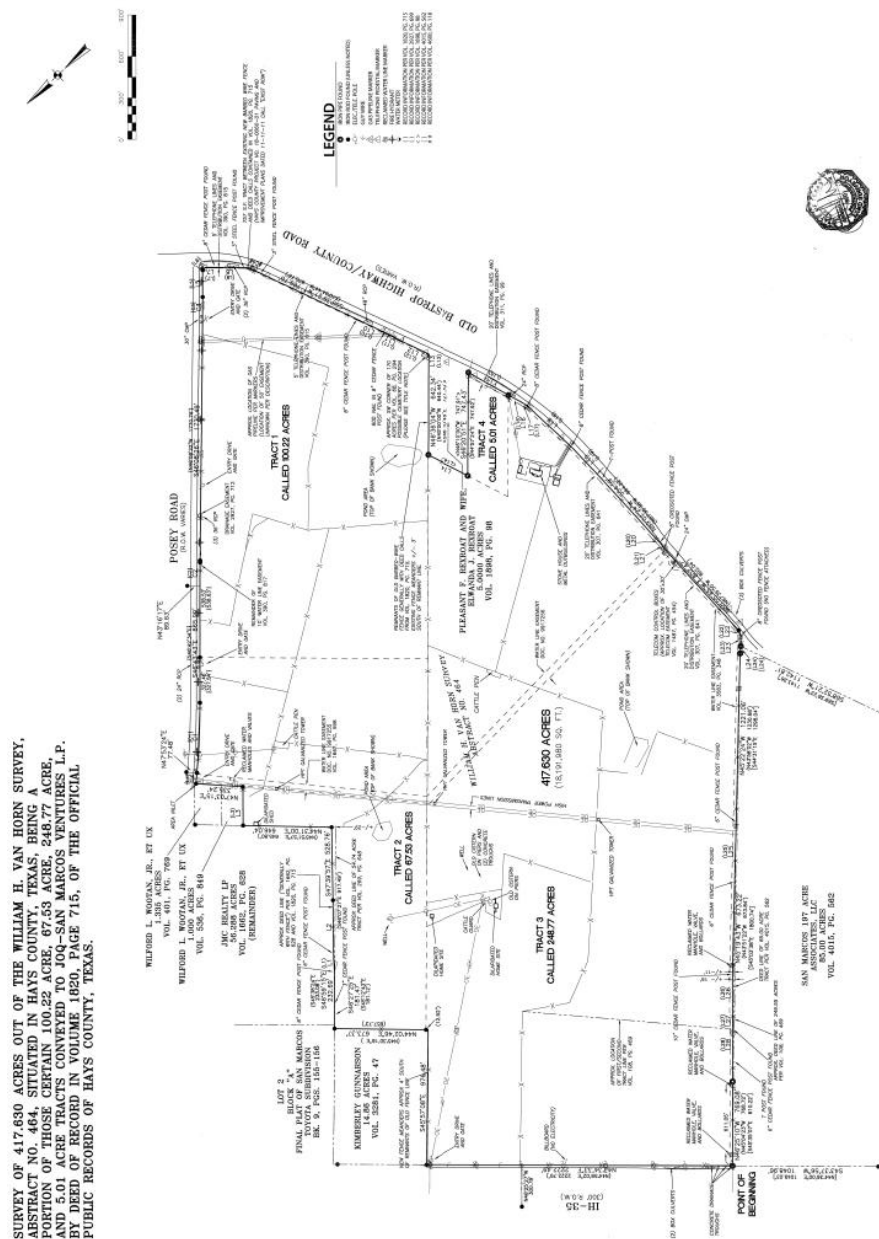
THENCE, N46°27'14"W, continuing along the used and occupied northeast right-of-way line of County Road 266, being the called west line of said 248.77 acre tract, generally with a barbed-wire fence, a distance of 79.93 feet to a 1/2-inch iron pipe found at the called southeast corner of said 85.00 acre tract, for an angle point hereof;

THENCE, leaving said northeast right-of-way line of County Road 266, along the occupied east line of said 85.00 acre tract, being the called and occupied west line of said 248.77 acre tract, generally with a barbed wire fence, the following eight (8) courses and distances:

- 1) N41°35'30"W, a distance of 51.65 feet to a 1/2-inch iron pipe found, for an angle point hereof;
- 2) N45°22'24"W, a distance of 1221.06 feet to a 6-inch cedar fence post found, for an angle point hereof;
- 3) N45°15'48"W, a distance of 427.82 feet to a 6-inch cedar fence post found, for an angle point hereof;
- 4) N45°19'43"W, a distance of 673.22 feet to a 10-inch cedar fence post found, for an angle point hereof;
- 5) N46°33'40"W, a distance of 275.02 feet to a calculated point in a fence line, for an angle point hereof;
- 6) N47°51'30"W, a distance of 124.53 feet to a 6-inch cedar fence post found, for an angle point hereof;
- 7) N46°26'02"W, a distance of 218.87 feet to a T-post found, for an angle point hereof;
- 8) N46°25'10"W, at 158.03 feet passing a 1/2-inch iron pipe found, and continuing for a total distance of 769.08 feet to the POINT OF BEGINNING, and containing 417.630 acres (18,191,980 square feet) of land, more or less.

NOTE: THE COMPANY IS PROHIBITED FROM INSURING THE AREA OR QUANTITY OF THE LAND DESCRIBED HEREIN. ANY STATEMENT IN THE ABOVE LEGAL DESCRIPTION OF THE AREA OR QUANTITY OF LAND IS NOT A REPRESENTATION THAT SUCH AREA OR QUANTITY IS CORRECT, BUT IS MADE ONLY FOR INFORMATIONAL AND/OR IDENTIFICATION PURPOSES AND DOES NOT OVERRIDE ITEM 2 OF SCHEDULE B HEREOF.

Illustration 42: Survey Map



13.2 Land Use Matrix

P = Permitted by LDC
C = Conditional Use by LDC

P - Permitted Use by PDD
C - Conditional Use by PDD
X - Not Permitted by PDD

PDD Sub-District (Base LDC Zoning)	PD-SF (SF-6)	PD-MF-24 (MF-24)	PD-MF-24/GC (MF-24)	PD-P (P)	PD-NC (NC)	PD-CC (CC)	PD-GC (GC)
Accessory Building/Structure (Larger than 625 s.f. in size OR 12'	C	P	P	P	C	P	P
Accessory Building/Structure (No larger than 625 s.f. in size and 12'	P	P	P	P	P	P	P
Accessory Dwelling (One Accessory Dwelling Per Lot)	C			P	C	C	C
Adult Day Care (No Overnight Stay)			C	P	€ P	P	P
Aircraft Support and Related Services				P			
Airport				P			
All Terrain Vehicle (go-carts) Dealer/Sales					C	C	P
Ambulance Service (Private)				P	C	C	P
Amusement Services or Venues (Indoors)			C			C	P
Amusement Services or Venues (Outdoors)	C	C	C	C			P
Antique Shop (with outside storage)					€ X	€ X	P X
Appliance Repair					C	P	P
Armed Services Recruiting Center			C	P	P	P	P
Artist or Artisans Studio			C		P	P	P
Assisted Living Facility/Hospice		P	P		€ P	P	P
Auction Sales (Non-Vehicle)							P
Auto Body Repair					C		C
Auto Dealer (Primarily New/Used Auto Sales as accessory use only)							P
Auto Dealer, Used Auto Sales						C	P
Auto Muffler Shop					C	P	P
Auto Paint Shop							C
Auto Repair (General)					C	C	P
Auto Repair as an Accessory Use to Retail Sales					C	P	P
Auto Supply Store for New and Rebuilt Parts					C	P	P
Auto Tire Repair/Sales (Indoor)					C	P	P
Auto Wrecker Service/Tow Yard							
Automatic Teller Machines (ATM's)				P	P	P	P
Automobile Driving School (including Defensive Driving)				P	C	P	P
Bank or Savings and Loan (w Drive- thru)			C		C	P	P
Bank or Savings and Loan (w/o Drive-thru)			C		C	P	P

13.2 Land Use Matrix

P = Permitted by LDC
C = Conditional Use by LDC

P - Permitted Use by PDD
C - Conditional Use by PDD
X - Not Permitted by PDD

PDD Sub-District (Base LDC Zoning)	PD-SF (SF-6)	PD-MF-24 (MF-24)	PD-MF-24/GC (MF-24)	PD-P (P)	PD-NC (NC)	PD-CC (CC)	PD-GC (GC)
Bar						C	C
Barber/Beauty College (barber or cosmetology school or college)				P	C	P	P
Barber/Beauty Shop, Haircutting (non-college)					P	P	P
Barns and Farm Equipment Storage							
Bed and Breakfast (No Permanent Residence)		P	P		C	P	P
Bed and Breakfast Inn	C	P	P	C	P	P	P
Bike Sales and/or Repair					C	P	P
Billiard/Pool Facility/Nightclub (Three or More Tables) No alcohol consumption						C	P
Bio-Medical Facilities			C				C
Broadcast Station (with Tower)				P			
Building Material Sales			C				P
Bulk Grain and/or Feed Storage/Processing							
Cabinet Shop (Manufacturing)							P
Call Service Center			C			P	P
Car Wash (Self Service; Automated)					C	C	P
Caretaker's/Guard's Residence		C	C	P	C	P	P
Caterer					€ P	C	€ P
Cemetery and/or Mausoleum				P			
Charitable Gaming Facility							C
Check Cashing Service					P	P	P
Child Day Care (Business)			C		€ P	P	P
Civic/Conference Center			C	P		C	P
Clinic (Medical)			C	P	€ P	P	P
Communication Equipment (Installation and/or Repair - No outdoor sales or storage)						C	P
Community Home	P	P	P	P			
Contractor's Office/Sales, With Outside Storage including Vehicles							
Convenience Store With Gas Sales					C	C	P
Convenience Store Without Gas Sales					€ P	P	P
Country Club (Private)	C	C	C		C	C	C
Dance Hall/Dancing Facility						C	P

13.2 Land Use Matrix

P = Permitted by LDC
C = Conditional Use by LDC

P - Permitted Use by PDD
C - Conditional Use by PDD
X - Not Permitted by PDD

PDD Sub-District (Base LDC Zoning)	PD-SF (SF-6)	PD-MF-24 (MF-24)	PD-MF-24/GC (MF-24)	PD-P (P)	PD-NC (NC)	PD-CC (CC)	PD-GC (GC)
Dance/Drama/Music Schools (Performing Arts)			C	P	P	P	P
Day Camp							P
Department Store			C			P	P
Distribution Center			X				C
Driving Range							P
Duplex/Two-Family/Duplex Condominiums		P X	P X	P X			
Electrical Generating Plant				C			
Electrical Substation	C	C	C	C	C	C	C
Electronic Assembly/High Tech Manufacturing							P
Emergency Care Clinic			C		C	P	P
Engine Repair/Motor Manufacturing Re-Manufacturing and/or Repair							
Extended Stay Hotels/Motels (Residence hotels)			C			C	P
Extermination Service							P
Exterminator Service (No outdoor sales or storage)							P
Fair Ground				P			
Family Home Child Care	P	P	P				
Farmers Market			C	P	C	C	C
Farms, General (Crops)							
Farms, General (Livestock/Ranch)							
Feed and Grain Store					C		P
Food or Grocery Store with Gasoline Sales			C		C	C	P
Food or Grocery Store without Gasoline Sales			C		C P	P	P
Food Processing (no Outside Public Consumption)							C
Four Family (Quadraplex) or Three Family (Tri-Plex)		P	P				
Fraternal Organization/Civic Club					C	P	P
Fraternity or Sorority Building		C	C	P C			
Full Service Car Wash (Detail Shop)					C	P	P
Funeral Home					C		P
Furniture Manufacture							C
General Vehicular Sales and Service						P	P
Governmental Building or Use (Municipal, State or Federal)	P	P	P	P	P	P	P
Gravestone/Tombstone Sales					C		C

13.2 Land Use Matrix

P = Permitted by LDC
C = Conditional Use by LDC

P - Permitted Use by PDD
C - Conditional Use by PDD
X - Not Permitted by PDD

PDD Sub-District (Base LDC Zoning)	PD-SF (SF-6)	PD-MF-24 (MF-24)	PD-MF-24/GC (MF-24)	PD-P (P)	PD-NC (NC)	PD-CC (CC)	PD-GC (GC)
Gun Smith					C		C
Hay, Grain, and/or Feed Sales (Wholesale)							
Health Club (Physical Fitness; Indoors Only)			C		P	P	P
Heavy Load Vehicle Sales/Repair							
Helipoint				P			C
Helistop (Non-Emergency)				P			
Home Improvement Center (10,000 s.f. or more)			C			P	P
Hospital (Acute Care/Chronic Care)		C	C	C	C	C	P
Hotel/Motel			C			C	P
Household Care Facility	C	C	C	P			
HUD code-Manufactured Home							
Kiosk (Providing A Retail Service)					C	P	P
Laboratory Equipment Manufacturing			C				C
Laundry/Dry Cleaning (Drop Off/Pick Up)			C		€ P	P	P
Lawnmower Sales and/or Repair						C	P
Leather Products Manufacturing							C
Limousine/Taxi Service						P	P
Liquor Sales (retail)						P	P
Livestock Sales/Auction						O	
Loft Apartments		P	P	C	C	C	C
Machine Shop							C
Maintenance/Janitorial Service			C		€ P		P
Manufactured Home Sales							
Manufacturing							
Manufacturing Processes not Listed							
Marble or Stone Finishing							C
Market (Public, Flea)					C		C
Martial Arts School			C	P	C	P	P
Medical Supplies and Equipment			C		P	P	P
Meeting Place/Nonreligious	C				€ P	P	P
Metal Fabrication Shop							C
Micro Brewery (onsite mfg. and sales)						C	C
Mini-Warehouse/Self Storage Units			C				C

13.2 Land Use Matrix

P = Permitted by LDC
C = Conditional Use by LDC

P - Permitted Use by PDD
C - Conditional Use by PDD
X - Not Permitted by PDD

PDD Sub-District (Base LDC Zoning)	PD-SF (SF-6)	PD-MF-24 (MF-24)	PD-MF-24/GC (MF-24)	PD-P (P)	PD-NC (NC)	PD-CC (CC)	PD-GC (GC)
Motion Picture Studio, Commercial Film							P
Motion Picture Theater (Indoors)			C			C	P
Motor Freight Terminal							
Moving Storage Company							C
Multifamily (Apartments)		P	P	C			
Museum (Indoors Only)			C	P	P	P	P
Nursing/Convalescent Home		P	P		€ P	P	P
Offices (Health Services)			C		P	P	P
Offices (Medical Office)			C		P	P	P
Offices (Professional)			C	C	P	P	P
Off-Premises Freestanding Sign						P	P
On-Premises Consumption of Alcohol					€ X	C	C
Outside Storage (as primary use)							C X
Paint Manufacturing							
Park and/or Playground	P	P	P	P	P	P	P
Petroleum Bulk Storage							
Pharmacy			C		€ P	P	P
Philanthropic organization					€ P	P	P
Photocopying/Duplicating/Copy Shop			C		C	P	P
Place of Religious Assembly/Church	P	P	P	P	P	P	P
Plant Nursery (growing for commercial purposes but no retail sales on site)							
Plant Nursery (Retail Sales/Outdoor Storage)				P X	€ X	P	P C
Plastic Products Molding/Reshaping							C
Portable Building Sales							P
Post Office (Governmental)	C	C	C	P	P	P	P
Post Office (Private)				P	P	P	P
Public Garage/Parking Structure			C	C		C	€ P
Rectory/Parsonage with Place of Worship	P	P	P	P	P	P	P
Recycling Kiosk				P	C	P	P
Research Lab (Non-Hazardous)			C				€ P
Residential Hall or Boarding House		P	P	P	C		
Restaurant/Prepared Food Sales				C	€ P	P	P

13.2 Land Use Matrix

P = Permitted by LDC
C = Conditional Use by LDC

P - Permitted Use by PDD
C - Conditional Use by PDD
X - Not Permitted by PDD

PDD Sub-District (Base LDC Zoning)	PD-SF (SF-6)	PD-MF-24 (MF-24)	PD-MF-24/GC (MF-24)	PD-P (P)	PD-NC (NC)	PD-CC (CC)	PD-GC (GC)
Restaurant/Prepared Food Sales with beer/wine off-premises consumption						C	C
Restaurant/Prepared Food Sales with drive thru					C	P	P
Retail Store (100,000 s.f. or more Bldg.)			C			C	P
Retail Store (Misc.) with Drive Thru Service						C	P
Retail Store (Misc.) without Drive Thru Service (Under 100,000 s.f. Bldg.)			C			P	P
Retail Store (over 10,000 s.f. or more Bldg.) outside sales					€ X	C	P
Retail Store (under 10,000 s.f. or more Bldg.) no outside sales			C		€ P	P	P
Retail Store (under 10,000 s.f. or more Bldg.) outside sales					€ X	P	P
Retirement Home/Home for the Aged		P	P		C	P	P
Rodeo Grounds				P			
RV/Travel Trailer Sales							P
Sand/Gravel Sales (Storage or Sales)							
School, K through 12 (Private)	C	C	C	P	P	P	P
School, K through 12 (Public)	P	P	P	P	P	P	P
School, Vocational (Business/Commercial Trade)			C	P	€ P	P	P
Security Systems Installation Company					C		P
Shopping Center (Over 5 Acres)			C			P	P
Sign Manufacturing							C
Single Family Detached House	P	P	P	C	C		
Single Family Industrialized Home	P	P	P	C	C		
Single Family Townhouse (Attached)	p	P	P				
Single Family Zero Lot Line/Patio Homes	p	P	P				
Smoking Lounge					€ X	C	P
Stables							
Stables (Private, Accessory Use)							
Stone/Clay/Glass Manufacturing							C
Studio for Radio or Television (without tower)				p-X	C	P	P
Studio Tattoo or Body Piercing					C	P	P
Taxidermist							P

13.2 Land Use Matrix

P = Permitted by LDC
C = Conditional Use by LDC

P - Permitted Use by PDD
C - Conditional Use by PDD
X - Not Permitted by PDD

PDD Sub-District (Base LDC Zoning)	PD-SF (SF-6)	PD-MF-24 (MF-24)	PD-MF-24/GC (MF-24)	PD-P (P)	PD-NC (NC)	PD-CC (CC)	PD-GC (GC)
Temporary Outdoor Retail Sales / Commercial Promotion (4 day time limit; Permit Required by Building Official)					C	P	P
Tennis Court (Lighted)	C	P	P	P		C	C
Theater (Non-Motion Picture; Live Drama)				P		C	P
Tire Sales (Outdoors/Storage)						C	P
Tool Rental (Indoor Storage only)			C		C	C	P C
Tool Rental (with Outdoor Storage)							C X
Transfer Station (Refuse/Pick-up)							
Transit Terminal						C	C
Travel Trailers/RVs (Short Term Stays)							P
Truck Terminal							C
University or College				P			
Upholstery Shop (Non-Auto)							P
Veterinarian (Indoor Kennels)					C	C	P
Veterinarian (Outdoor Kennels or Pens)							C
Warehouse/Office and Storage							C P
Washateria/Laundry (Self Serve)					C	P	P
Welding Shop							C
Woodworking Shop (Ornamental)					P	P	P
Wrecking/Junk Yard							

13.3 Comparison Table variances/enhancements to City Ordinances/Code

LDC Modifications				
PDD Section	CoSM Section	Subject	Existing Regulation	PDD Modification
4.1	TDM Table 1-1	Residential Street	Minimum ROW 53'	Residential Street ROW is 52', unless at School or Central Park site where 56' to accommodate two sides of parking and wider sidewalks
4.1	TDM Table 1-1	Residential Street	Paved width: 33'	Paved width is 30', unless at School or Central Park site where 32' to accommodate parking on two sides
4.1	TDM Table 1-1	Commercial Collector	Tangent length between reverse curves: 110'-150'	Tangent length between reverse curves: 100'-150'
4.5	LDC 7.4.1.4 (g)	Intersections	No street shall intersect at an angle less than 85 degrees	The desirable angle of a street intersection is 90 degrees. However, street intersection angles are allowed to vary between 80 and 100 degrees with Engineering Director approval.
5.1	LDC 4.2	Zoning Districts		See Table 5.1 Added three types of additional residential uses
5.1	LDC 4.2	Zoning Districts		Increase allowed impervious cover from 60%-75% to 80%
4.6	LDC 6.1.1.4	Street Trees	On single family and lots, 2 Large Shade Trees planted on-site, per lot.	On single-family lots 40 feet in width or less located on an Enhanced Residential Street, one street tree may count towards the two shade trees per lot

				required by Section 6.1.1.4(d)(1).
11.2	LDC 6.3.3.3 (5)	Major Entry Monumentation	260 SF max. sign area along I-35. Max 42.5' tall.	260 SF max. sign area (each side) along I-35. Max. 35' tall.
11.3	LDC 6.3.3.3 (5)	Minor Entry Monumentation	120 SF max. sign area along all other roadways. Max 25' tall.	96 SF max. sign area along all other roadways. Max 16' tall.
11.6	LDC 6.3.3.3 (5)	Neighborhood Signage	80 SF max sign area for ground/monument signs.	40 SF max sign area (each side) for ground/monument signs
12.3		Temporary Sales Office		Temporary Residential Sales buildings and/or offices for construction purposes may be permitted by the Building Official
12.4 12.5	LDC Art.2-Ch.4-64	Construction Field Office	None	Temporary buildings and storage areas for construction purposes may be permitted by the Building Official
13.5	LDC 4.3	Use Regulations		See Table 13.4

LDC Enhancements

PDD Section	CoSM Section	Subject	Existing Regulation	PDD Enhancement
3.1	LDC	Parks & Open Space	None	Approximately 58 Acres or 69% of 84.2 total acres of open space will be maintained in perpetuity by the Trace HOA.
N/A	N/A	N/A	N/A	Dedication of 3 acres for the development of a fires station.
3.2	LDC 7.6.1.2	Parkland Dedication	5 acres per 1,000 residents = 22.4 acres	Trace contains 30.3 acres of parkland for dedication
3.3.1	LDC 7.1.1.1	Public Central Park	None	A public central park with 7 acres public and 2 acres private for an amenity center will be centrally located in the community
3.3.1	LDC 6.1.1.4	Required Landscape Area Standards	None	Public Central Park: On-Site trees shall be provided at a rate of one (1) tree per 30 lineal feet of street frontage and shall be clustered and located in a way that provides programming for active spaces; minimum two (2) inch caliper. A minimum of 50% of required trees must be shade trees.
3.3.1	LDC 6.1.1.4	Required Landscape Area Standards	None	Homeowner Amenity Center: On-site trees shall be provided at a rate of one (1) tree per 1000 square feet of undeveloped area; minimum of 2 inch caliper. A minimum

				50% of required trees must be shade trees.
3.3.2	LDC 7.1.1.1	Pocket Parks	None	5 family friendly pocket parks will be centrally located within different sections of the community; privately maintained by the HOA and having view fencing with gates for direct access to pocket parks by adjacent homeowners.
3.3.2	LDC 7.1.1.1	Pocket Parks	None	On-site trees shall be provided at a rate of one (1) tree per 1000 square feet of park area; minimum of 2 inch caliper. A minimum of 50% of required trees must be shade trees.
3.3.2	LDC 7.6.1.3	Public Park Access	Parks shall be open to public view	Parks will have a least 2 sides visible from a public street including the pocket parks
3.3.3	LDC 7.1.1.1	Trails Environmental Buffer	None	2-3 miles of trails 6-12 feet in width, permanently maintained by HOA.
3.3.3	LDC 7.1.1.1	Trails Environmental Buffer	None	Trees shall be provided at a rate of 1 tree per 50 linear feet of trail, except where located with environmental buffer areas and within electrical easements.
3.4	LDC 7.1.1.1	Elementary School	None	12 acres set aside for use by the San Marcos Consolidated Independent School District

4.1	TDM Table 1-1	Residential Street	Landscaping: both sides 6'	Landscaping; both sides 7'
4.1	TDM Table 1-1	Residential Street	4' Sidewalk both sides '	At Park & School – Sidewalk 5' both sides
4.1	TDM Table 1-1	Residential Collector	Landscaping: both sides 5.5'	Landscaping: both sides 7 to 12'
4.1	TDM Table 1-1	Residential Collector	Sidewalks: 5'	Sidewalks and Bike Path combined for a 12' path on both sides
4.1	TDM Table 1-1	Residential Collector	Bike Path: None	
4.1	TDM Table 1-1	Residential Collector	Sidewalks: 5'	Sidewalks: 6' both sides
4.1	TDM Table 1-1	Residential Collector	Bike Path: None	Meandering 12' combination path is provided in the linear park area.
4.1	TDM Table 1-1	Residential Collector	Median: 4'	Median: 16' (50' along a portion of Street Section CC to accommodate sewer easement)
4.1	TDM Table 1-1	Commercial Collector	Median: 4'	Median: 20' with bio-swale and turn lanes
4.1	TDM Table 1-1	Commercial Collector	Sidewalks: 5'	Concrete Sidewalk: 5' one side; 10' trail one side
4.1	TDM 1.6.7	Commercial Collector	Blocks lengths may be up to 2,000' in length	Block lengths shall be a maximum of 1,650'; 1,400
4.2	LDC 7.4.1.4	Cul-De-Sacs	None	Landscape areas shall be provided within the circular area of the cul-de-sac to include at least 1 street tree.
4.2	LDC 7.4.1.4	Cul-De-Sacs	None	Cul-de-sacs shall include pedestrian access from the end of the cul-de-sac to the next adjoining street
4.3	LDC 7.4.2.2	Alleys	No use requirement	Alley loaded product shall be required along the entire length of Street Sections AA and CC

4.3	LDC 7.4.2.2	Alleys	No use requirement	Alleys shall be required adjacent to all lots 40' wide and smaller.
4.4	LDC 7.4.1.4 (j)	Max. Block Length	Block length shall not exceed 1,200'	Block length shall not exceed 1,100' in residential areas
4.6	LDC 6.1.1.4 (b)(2)	Street Trees	1 per 50 LF of street frontage	1 per 30 LF of street frontage along Street Sections AA, BB, CC, DD, EE
4.6	LDC 6.1.1.4 (b)(2)	Street Trees	1 per 50 LF of street frontage	1 per 50 LF of street frontage along all Enhanced Residential Sections
4.6	LDC 6.1.1.4 (b)(2)	Street Trees	None	Secondary tier of Ornamental trees shall be planted 1 per every 5 street trees on road sections AA, BB, CC, DD, EE.
4.6	LDC 6.1.1.4	Median Trees	None	Street trees shall be provided within the median of Street Sections AA, BB, DD, and EE at one (1) ornamental tree per 30 lineal feet of street frontage; minimum of 2" caliper.
4.6	LDC 6.1.1.4	Median Trees	None	Street trees shall be provided within the median of Street Sections CC at two (2) trees per 30 lineal feet of street frontage; minimum of 2" caliper. A minimum of 50% of required street trees may be ornamental.
4.6	LDC 6.1.1.4	Street Trees	None	Street trees located along Enhanced Residential Streets shall be installed at the time of construction of improvements and shall be warranted by the builder for a

				minimum period of 2 years.
4.7	LDC 5.1.1.3 (d)	Runoff Attenuation	LID practices may be used	The medians of Residential Collector roads shall contain ribbon curbs, and vegetative bio-swales
5.2	LDC 4.2.1.5	SF-6, Single Family District	None	All lots 40' wide and less, shall not have front loaded garages and shall be alley loaded.
6	LDC 4.2.1.5	SF-6, Single Family District	None	Enhanced Architectural Standards requiring a mix of one and two story units.
6.1	LDC 4.2.1.5	SF-6, Single Family District	None	Enhanced Architectural Standards requiring spacing between one and two story single family units
6.1	LDC 4.2.1.5	SF-6, Single Family District	None	Enhanced Architectural Standards requiring spacing between repeating colors on buildings.
6.1	LDC 4.2.1.5	SF-6, Single Family District	None	Enhanced Architectural Standards requiring a variety of colors on buildings.
6.1	LDC 4.2.1.5	SF-6, Single Family District	None	Enhanced Architectural Standards requiring massing and roof form change on all facades fronting and siding to a public street.
6.1	LDC 4.2.1.5	SF-6, Single Family District	None	Enhanced Architectural Standards requiring minimum provision of architectural details on all facades fronting, siding, or backing to a public street.
6.1	LDC 4.2.1.5	SF-6, Single Family District	None	Enhanced Architectural Standards requiring variation in roof design.

6.1	LDC 4.2.1.5	SF-6, Single Family District	None	Enhanced Architectural Standards requiring variation in ridgeline and eave height.
6.1	LDC 4.2.1.5	SF-6, Single Family District	None	Enhanced Architectural Standards requiring variation in roof color.
6.1	LDC 4.2.1.5	SF-6, Single Family District	None	Enhanced Architectural Standards requiring minimum standards for the design of front porches.
6.1	LDC 4.2.1.5	SF-6, Single Family District	None	Enhanced Architectural Standards requiring minimum standards for combinations of building materials on facades.
6.1	LDC 4.2.1.5	SF-6, Single Family District	None	Enhanced Architectural Standards requiring standards for front loaded garages doors
6.2	LDC 4.4.3.2 (2)	Building Design – Materials (Multi-Family)	None	Enhanced Architectural Standards requiring variation in building materials.
6.3	LDC 4.4.2.2	Exterior Design of Buildings (non-residential)	None	Enhanced Architectural Standards regarding design of buildings on corner lots.
6.3	LDC 4.4.2.2	Exterior Design of Buildings (non-residential)	None	Enhanced Architectural Standards requiring additional horizontal articulations along facades visible from public view.
6.3	LDC 4.4.2.2	Exterior Design of Buildings (non-residential)	None	Enhanced Architectural Standards requiring additional vertical articulations along facades visible from public view.

6.3	LDC 4.4.2.2	Exterior Design of Buildings (non-residential)	None	Enhanced Architectural Standards requiring additional ground-level articulations along facades visible from public view.
6.3	LDC 4.4.2.2	Exterior Design of Buildings (non-residential)	None	Enhanced Architectural Standards requiring minimum architectural design standards for entry elements on facades.
6.3	LDC 4.4.2.2	Exterior Design of Buildings (non-residential)	None	Enhanced Architectural Standards requiring additional standards for building materials.
7.1	LDC 6.2.2.1	Parking Design & Construction Standards	None	Enhanced site design standards regarding the provision of curbed landscape islands within on-site parking areas.
7.2	LDC 6.2.2.1	Parking Design & Construction Standards	None	Enhanced site design standards requiring mutual access between all parking areas.
7.2	LDC 6.2.2.1	Parking Design & Construction Standards	None	Enhanced site design standards regarding access for lots with less than 250 feet of frontage.
7.1	LDC 6.2.2.1	Parking Design & Construction Standards	None	Pedestrian walkways will be spaced 500' in commercial and office parking lots. They shall be wide enough for an 8' path and supplemental landscape with the possibility to add bio-swales.
8.4	LDC 6.1.2.3	Screening Along Arterial Roadways	Masonry or alternate	Fences along prominent public views to be full masonry or a combination of

				masonry and durable opaque fence
8.5	LDC 6.1.3.2	Residential Fences	Fences may be constructed of wood, decorative metal, chain link, or other traditional material	Fences along non-prominent public views to be stained capped full wood or concrete type
8.5	LDC 6.1.3.2	Residential Fences	Fences may be constructed of wood, decorative metal, chain link, or other traditional material	Residential lots that back to open space to use decorative metal view fence
9.1	LDC 6.1.1.4	Landscaping within parking areas.	No parking space shall be located more than 60 feet from a portion of the required landscaping.	Enhanced landscape standards requiring a minimum of one parking lot tree per 10 parking spaces.
9.2.1	LDC 6.1.1.5 (c)(8)	Xeriscaping	Developers and home builders are encouraged to use xeriscape plant materials	The project shall adhere to the Sensible Landscaping for Central Texas water conservation practices adopted by the Home Builders Association of Greater Austin
9.2.1	LDC 6.1.1.5 (c)(10)	Irrigation control	None	The irrigation system will be weather adaptive with solar, rain, or soil moisture sensors and weather synchronized irrigation controllers

13.4 Illustrations in 11" x 17" format

Illustration 1:	Vicinity Map
Illustration 2:	Portion of the Project within City Limits
Illustration 3:	Base Aerial
Illustration 4:	Existing Conditions
Illustration 5:	Slope Map
Illustration 6:	Topography and Environmental Features
Illustration 7:	Concept Zoning Plan
Illustration 8:	Phasing Plan
Illustration 9:	Concept Plan Open Space
Illustration 10:	Open Space Not Eligible in Parkland Dedication
Illustration 11:	Parkland for Dedication
Illustration 12:	Open Space and Parks Programming Plan
Illustration 13:	Typical Pocket Park and Fencing Elevation at Pocket Parks
Illustration 14:	Property Within ¼ Mile of Open Space or Parks
Illustration 15:	Landscape Maintenance Plan
Illustration 16:	Vehicle Circulation Plan
Illustration 17:	Pedestrian Sidewalk/Bicycle Circulation Plan
Illustration 19:	Enhanced Residential Street ROW
Illustration 20:	Enhanced Residential Street ROW at Central Park
Illustration 21:	Enhanced Residential Street ROW at School
Illustration 22:	Enhanced ROW Section AA
Illustration 23:	Plan View Section AA
Illustration 24:	Typical Intersection at ROW Section AA
Illustration 25 :	Enhanced ROW Section BB
Illustration 26:	Roundabout Plan and Typical Future Bus Stop Locations
Illustration 27:	Enhanced ROW Section CC
Illustration 28:	Plan View ROW Section CC
Illustration 29:	Typical Intersection at ROW Section CC
Illustration 30:	Enhanced ROW Section DD
Illustration 31:	Enhanced ROW Section EE
Illustration 32:	Typical Cul de Sacs and Alleys
Illustration 33:	Bio Swale and Typical Ribbon Curb
Illustration 34:	Typical Lot Layouts SF-6: 50'; 60' and 70' wide lots
Illustration 35:	Typical Lot Layouts SF-4.5; SF-Alley Loaded 32' and 40' Wide Lots
Illustration 36:	Typical Lot Layouts: Townhome and Patio Home-Zero Lot Line
Illustration 37:	Areas where Houses May Back Up to a Public Street
Illustration 38:	Allowable Commercial Orientation
Illustration 39:	Water Quality / Stream Setback
Illustration 40:	Entry Monument and Signage Plan
Illustration 41:	Entry Monument and Signage Examples
Illustration 42:	Comparison of City Sign Standards to Trace Signage Standards
Illustration 43:	Survey Map
Illustration 44:	Survey Map Notes

13.5 Applicable Ordinances

- 13.5.1** City Code of Ordinances, Subpart B – Land Development Code, Chapter 4, Article 2, Division 1, Section 4.2.1.5 - SF-6, Single-Family District; Section 4.2.1.6 - SF-4.5, Single-Family District; Section 4.2.1.9 - TH, Townhouse Residential District; and Section 4.2.1.10 - PH-ZL, Patio Home, Zero-Lot-Line Residential District Design Standards
- 13.5.2** City Code of Ordinances, Subpart B – Land Development Code, Chapter 4, Article 4, Division 2, Section 4 - Procedure for Determining Alternative Exterior Materials
- 13.5.3** City Code of Ordinances, Subpart B – Land Development Code, Chapter 4, Article 4, Division 3 – Multi Family Residential Design Standards
- 13.5.4** City Code of Ordinances, Subpart B – Land Development Code, Chapter 6, Article 1, Division 1, Section 4 – Required Landscape Area Standards
- 13.5.5** City Code of Ordinances, Subpart B – Land Development Code, Chapter 6, Article 1, Division 2, Section 1 - Non Residential and Multi-Family Screening Required (New Construction)
- 13.5.6** City Code of Ordinances, Subpart B – Land Development Code, Chapter 6, Article 5 – Lighting and Glare Standards
- 13.5.7** City of San Marcos - Land Development Code, Technical Manual, Article 2: Preferred Plant List, Division 2 – Blackland Prairie Planting Materials and Division 3 – Discouraged Planting Materials
- 13.5.8** Sensible Landscaping for Central Texas, A Guide for Home Builders and Homeowners
- 13.5.9** City of San Marcos Stormwater Technical Manual, Appendix N - Aesthetically Enhanced Detention and Water Quality Basins
- 13.5.10** City Code of Ordinances, Subpart B – Land Development Code, Chapter 1, Article 5, Division 3 – Petition for Planned Development District, Section 6 – Amendments & Relief Measures
- 13.5.11** City Code of Ordinances, Subpart B – Land Development Code, Chapter 1, Article 6, Division 2 – Subdivision Concept Plats

13.6 - PARKS COST ESTIMATE

	Park Amenity:	Cost	Multiplier	Sub-Total	Measurement
1	Asphalt Road - Demolition	\$50	0	\$0	linear foot
2	Asphalt Road - Repair	\$33	0	\$0	per area
3	Bench & concrete pad	\$2,200	0	\$0	unit price
4	Bench - plaque	\$165	0	\$0	unit price
5	Bike Rack	\$550	0	\$0	unit price
6	BB Court - Full Size/colored	\$63,800	0	\$0	unit price
7	BB Court - Half or less/colored	\$58,300	0	\$0	unit price
8	BB Court - colorize existing court	\$3,080	0	\$0	unit price
9	Dog Station (Pet Mitt)	\$330	0	\$0	unit price
10	Fence - wrought Iron 4 ft	\$28	0	\$0	linear foot
11	Fence - Wrought Iron 5 ft	\$35	0	\$0	linear foot
12	Fence - Wrought Iron 6 ft	\$39	0	\$0	linear foot
13	Fence - Plastic/ 5 Ft	\$16	0	\$0	linear foot
14	Fence - Chain Link/6 Ft	\$17	0	\$0	linear foot
15	Fountain - Drinking	\$2,750	0	\$0	unit price
16	Gazebo /structure only	\$44,000	0	\$0	unit price 36 ft
17	Gazebo /slab only	\$22,000	0	\$0	unit price 36 ft
18	Grill - BBQ/ pad with hole	\$385	0	\$0	unit price
19	Grill - Ash container	\$440	0	\$0	unit price
20	Irrigation	\$17	0	\$0	linear foot
21	Landscaping	\$6	0	\$0	square foot
22	Light pole	\$2,750	0	\$0	unit price
23	Light - overhead lighting	\$1,650	0	\$0	unit price
24	Lighting - directional	\$1,650	0	\$0	unit price
25	Parking - Asphalt	\$880	0	\$0	standard size/ 9 by 21 ft
26	Pavilion - structure only	\$55,000	0	\$0	unit price / Buyboard
27	Pavillion - slab only	\$44,000	0	\$0	unit price / Buyboard
28	Picnic Table - 8 foot	\$1,100	0	\$0	unit price
29	Picnic Table - ADA	\$1,430	0	\$0	unit price
30	Playscape - Open	\$27,500	0	\$0	unit price
31	Playscape - integrated/covered	\$53,900	0	\$0	unit price
32	Playscape/Playground - Fibar	\$385	0	\$0	per load cost
33	Sidewalk - 4 foot wide	\$19	0	\$0	linear foot
34	Sidewalk - 6 foot wide	\$30	0	\$0	linear foot
35	Sidewalk - 8 foot wide	\$41	0	\$0	linear foot
36	Shade trees - 3 inch diameter	\$220	0	\$0	unit cost
37	Sod - full coverage	\$10,048	0	\$0	bid
38	Trail - Decomposed Granite	\$7	0	\$0	square foot
39	Trail - Limestone 8 ft wide	\$8	0	\$0	linear foot
40	Trash Cans & inground mounts	\$1,210	0	\$0	unit price
41	Signage - standard PARD sign	\$3,300	0	\$0	unit price
42	Other - remove dead tree	\$220	0	\$0	unit price
43	Other - install ADA ramp to playscape	\$495	0	\$0	unit price
44	Other - water meter/ installation	\$2,200	0	\$0	city cost
45	Other - enviro review / public notices	\$550	0	\$0	city cost
				Construction	\$0
				A/E	\$0 12%
				Sub-Total	\$0
				Allow	\$0 10%
				Total Cost	\$0