



2026 POINT IN TIME (PIT) COUNT DATA HIGHLIGHTS



Homeless Coalition of Hays County

OVERVIEW

The Point-in-Time (PIT) Count is a nationwide effort mandated by the U.S. Department of Housing and Urban Development to collect data on homelessness. Each year, communities across the country conduct this count to capture a snapshot of the number of individuals and families experiencing homelessness on a single night in January.





OVERVIEW

On January 22nd of this year, the Hays County Homeless Coalition, in partnership with local agencies and community volunteers, conducted the annual Point-in-Time (PIT) Count. This effort serves as a critical initiative to assess homelessness within our community. As a one-day census, it provides essential data that helps inform and guide future programs, services, and resource allocation for individuals experiencing homelessness.

DEFINITIONS AND SCOPE

Unsheltered Locations:

Areas such as streets, outdoor encampments, or other environments not intended for human habitation.

Sheltered Locations:

Places intended for temporary habitation, such as emergency shelters, transitional housing programs, or other facilities that provide short-term housing support.

Individuals in permanent housing or temporary situations are not included in the PIT Count.

Permanent housing includes PSH and RRH programs, HUD -VASH, and FEMA-funded housing.

Temporary situations include individuals doubled up with friends or family, those at risk of homelessness, staying in hotels or motels paid with personal funds, in foster care, sober living environments, or in criminal justice or healthcare facilities.

DEFINITIONS AND SCOPE

What The Count Does Tell Us

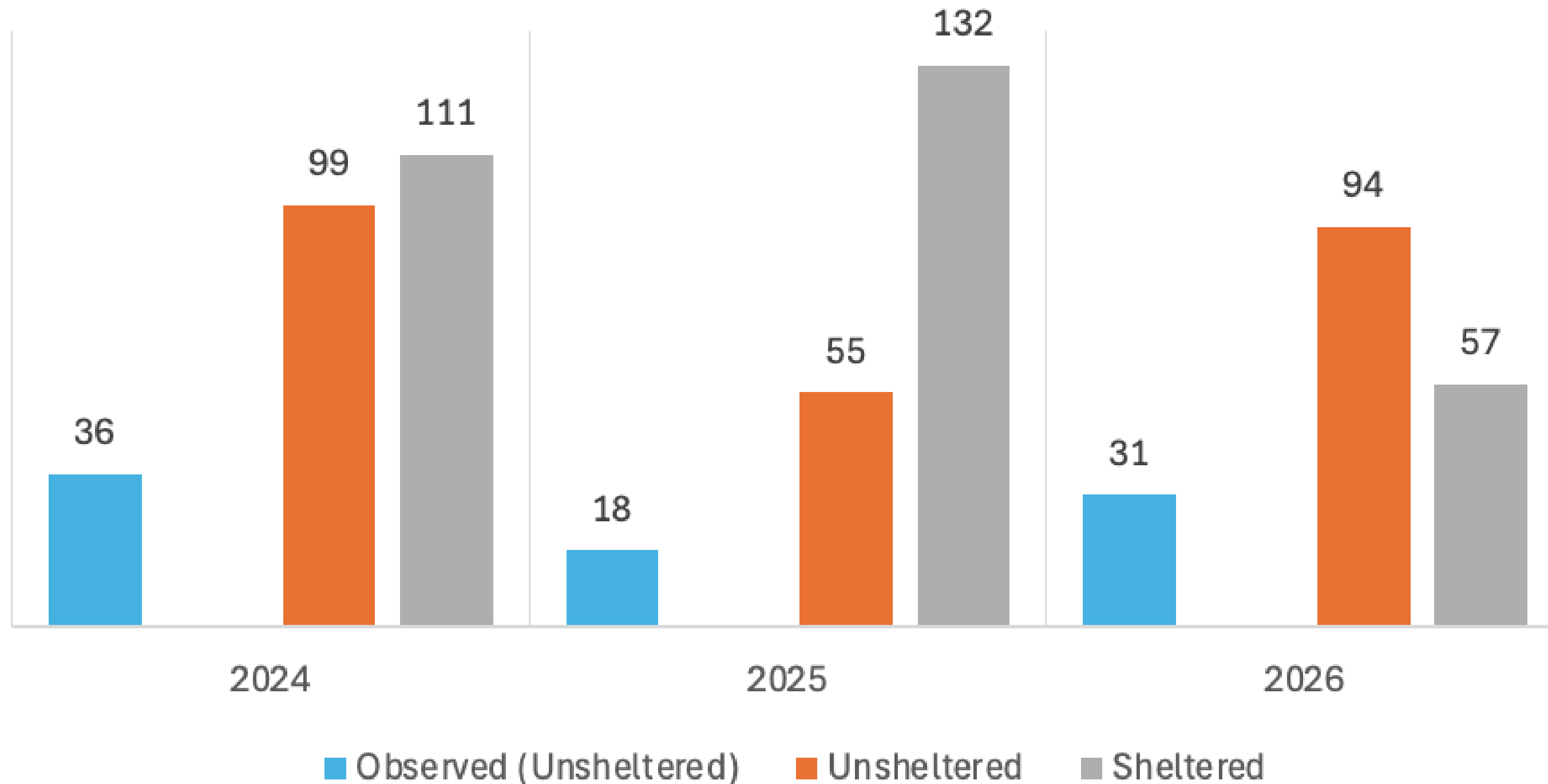
An estimate of how many individuals were experiencing homelessness in Hays County on the night of January 22nd, 2026

Trends over time, including increases or decreases in homelessness

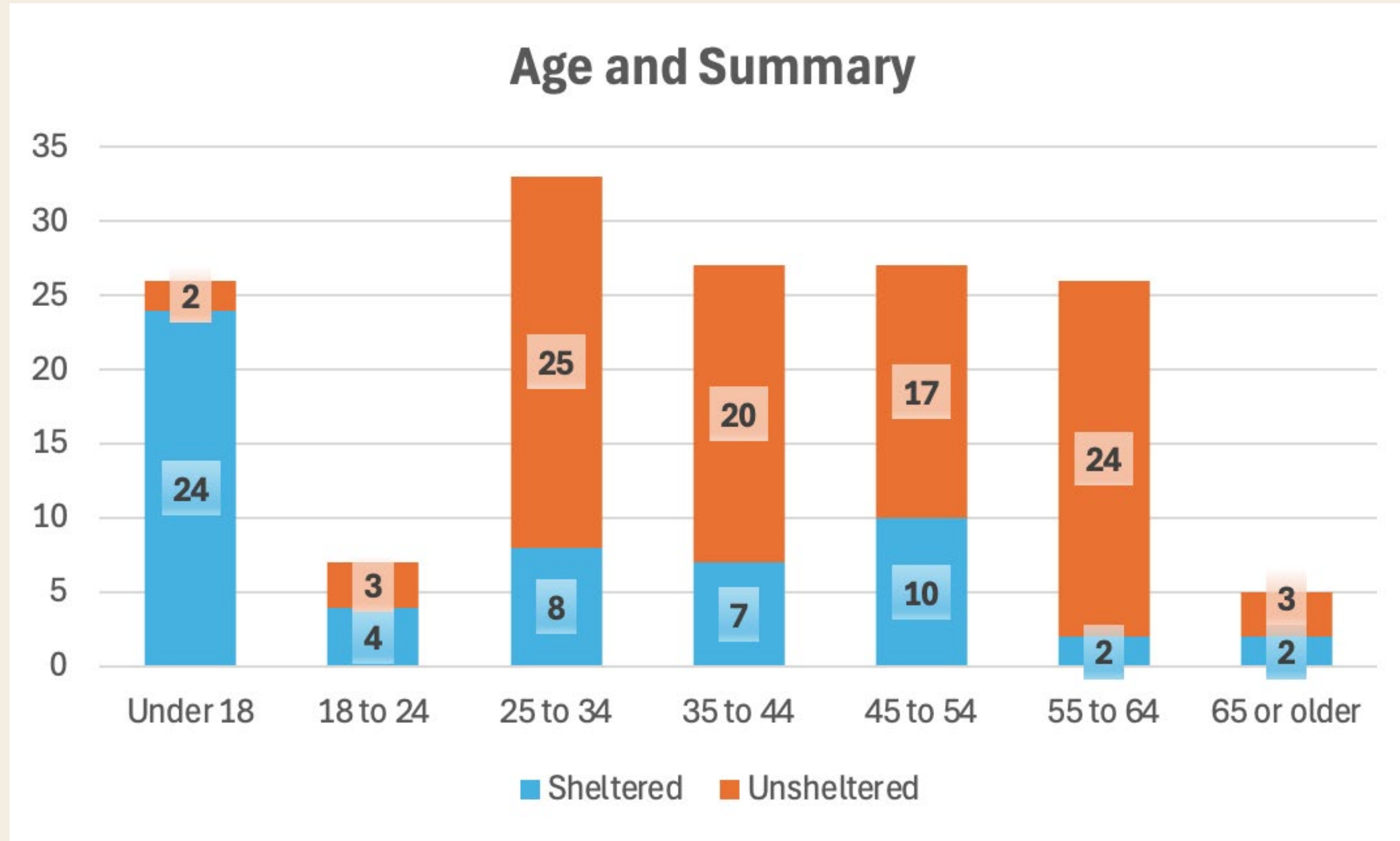
Insights into the effectiveness of housing programs and homeless services in Hays County

PIT COUNT TRENDS

Hays County Annual Point-In-Time Counts

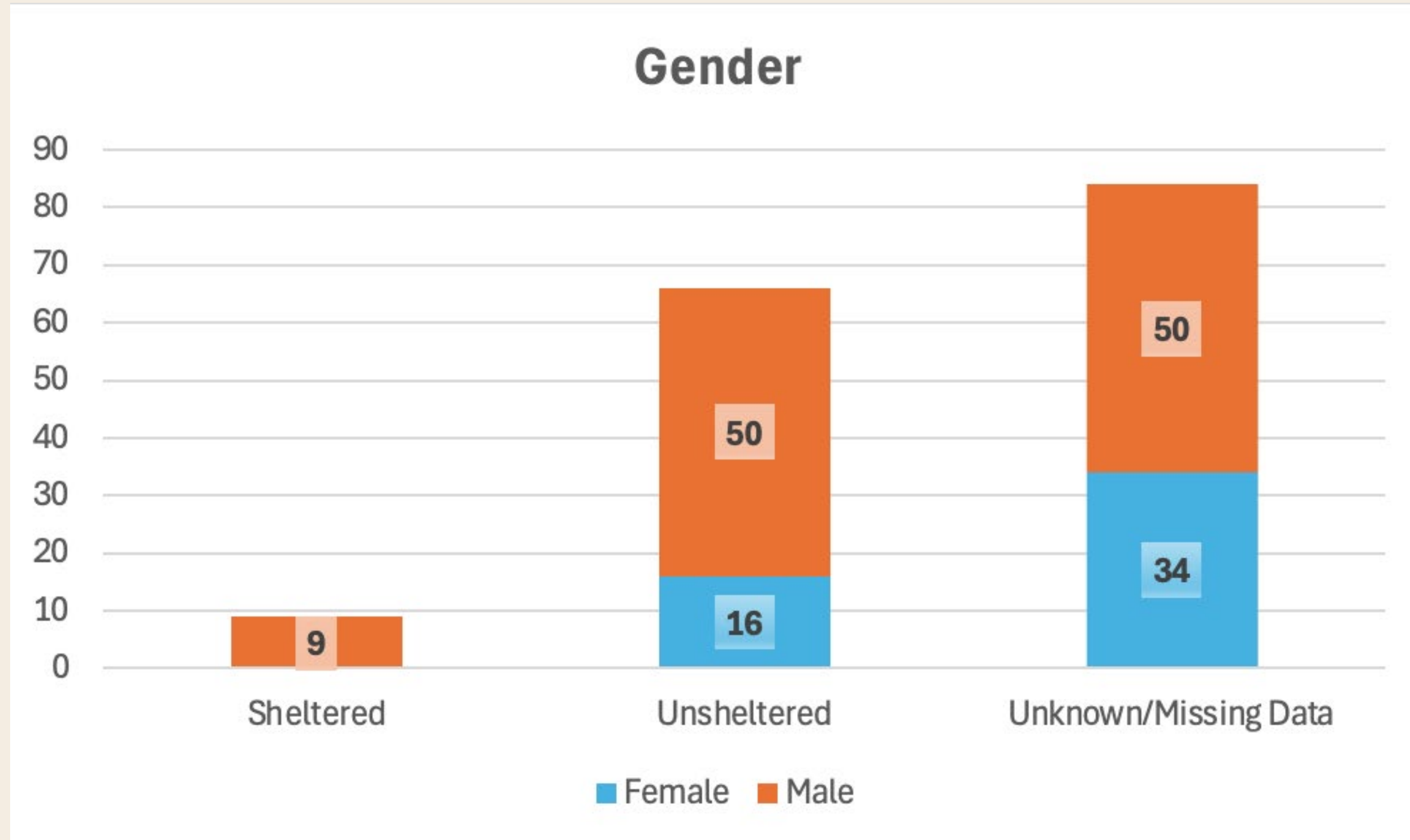


DEMOGRAPHICS



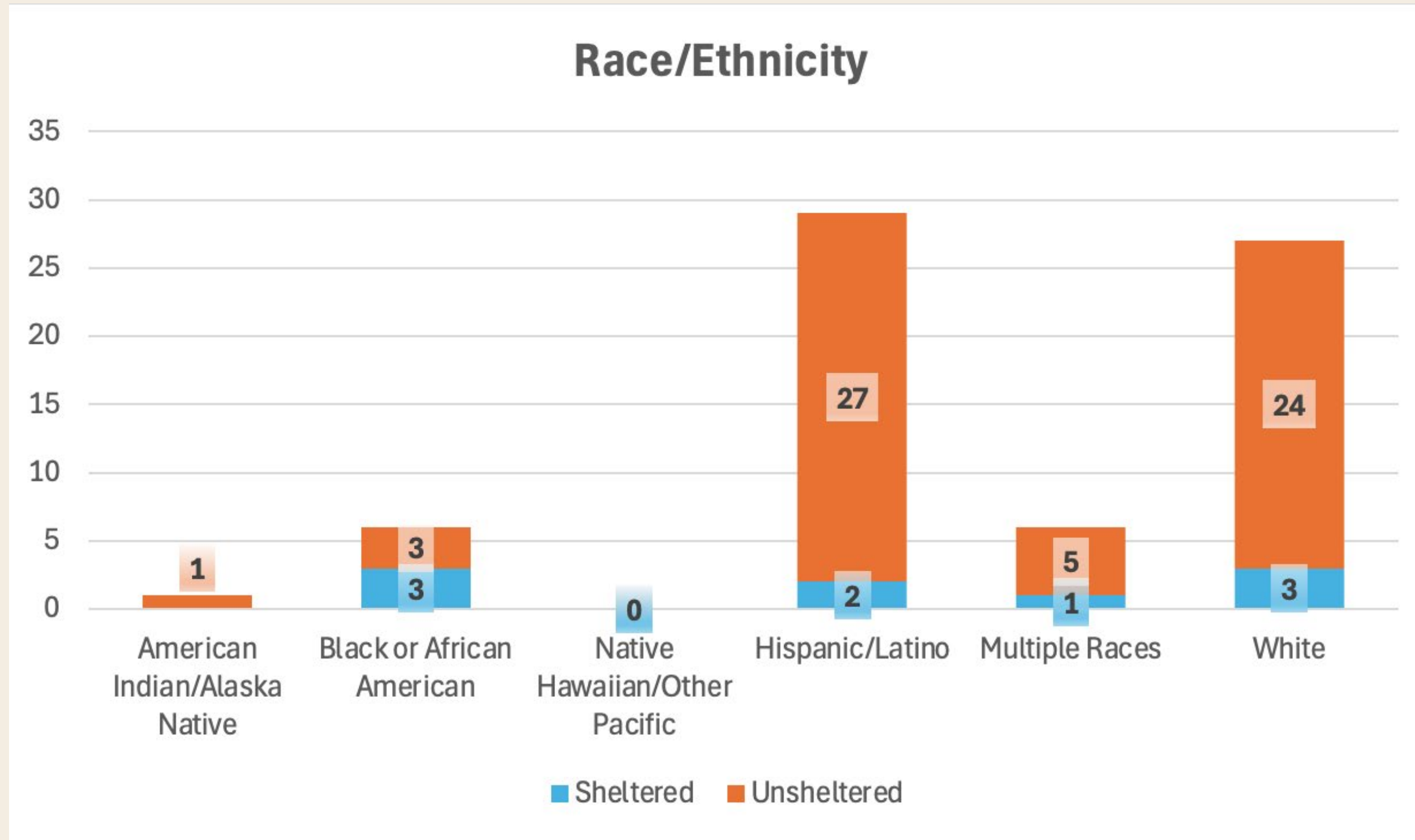
Adults ages 25 –64 make up the majority of the homeless population (n = 146), with most individuals in these groups experiencing unsheltered homelessness.

DEMOGRAPHICS



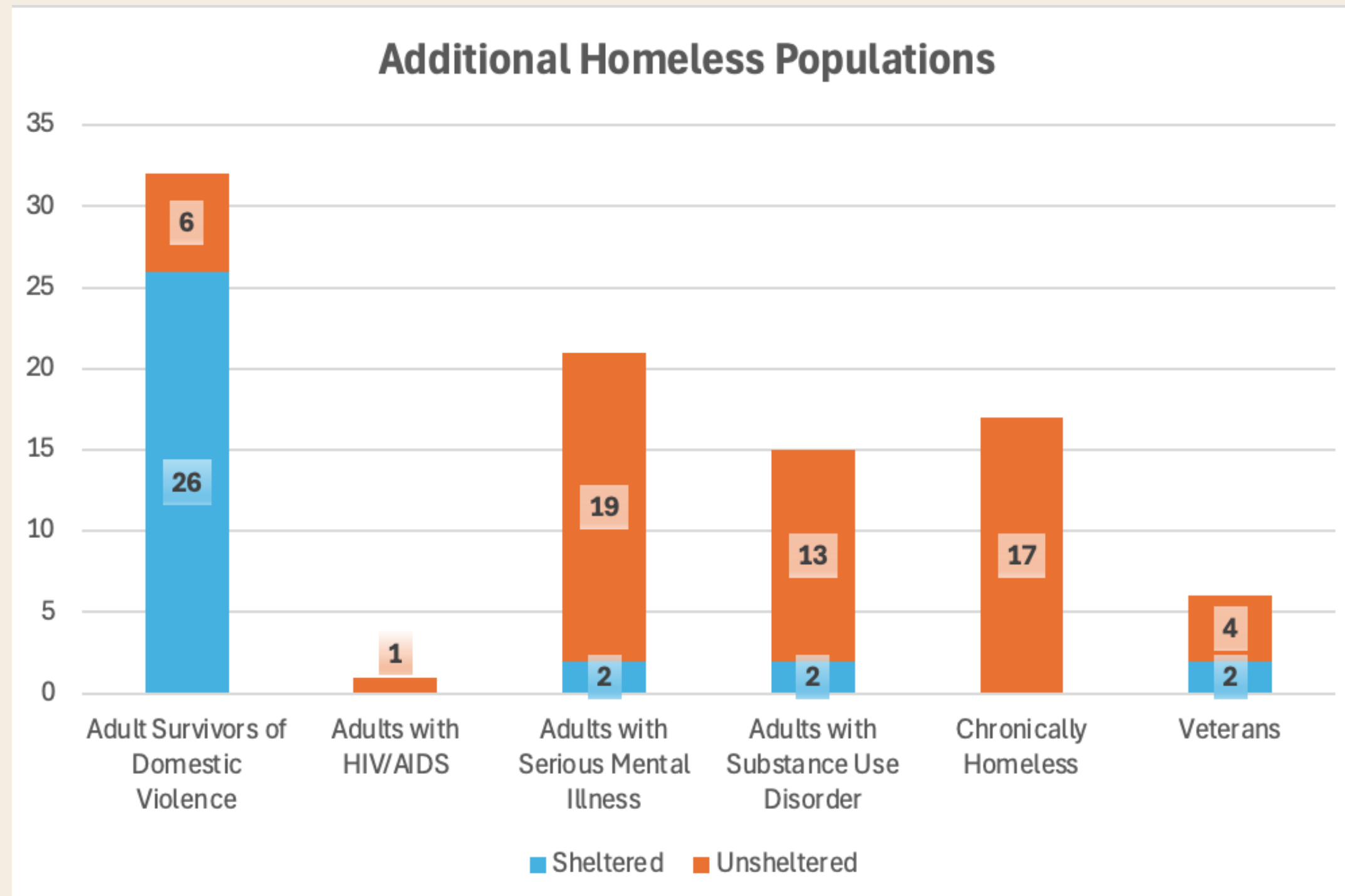
Men represent the majority of the known homeless population (79%, n = 75), particularly among those who are unsheltered, though over half of responses are missing gender data (n = 84).

DEMOGRAPHICS



Most respondents were Hispanic and White (n=56)

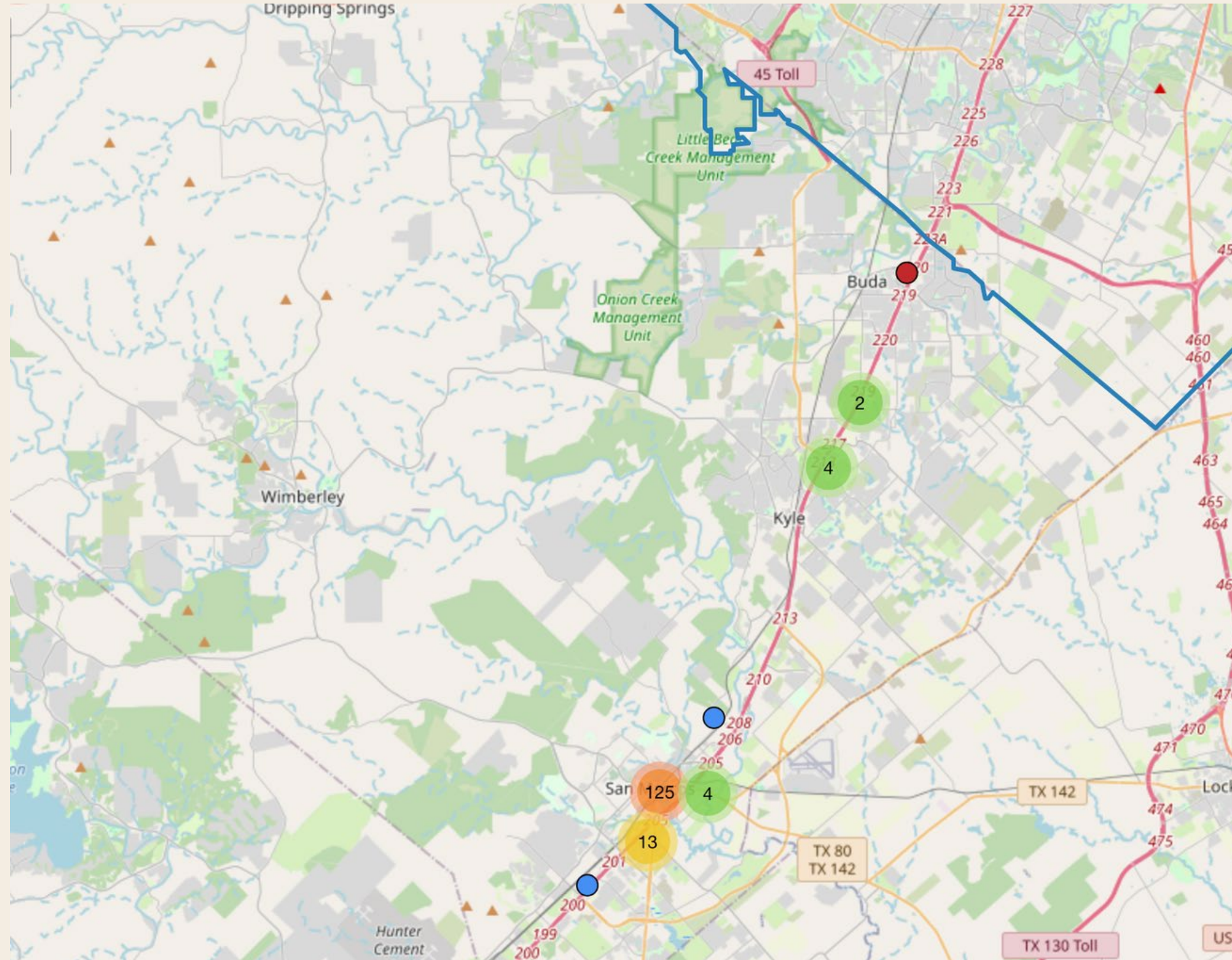
ADDITIONAL POPULATIONS



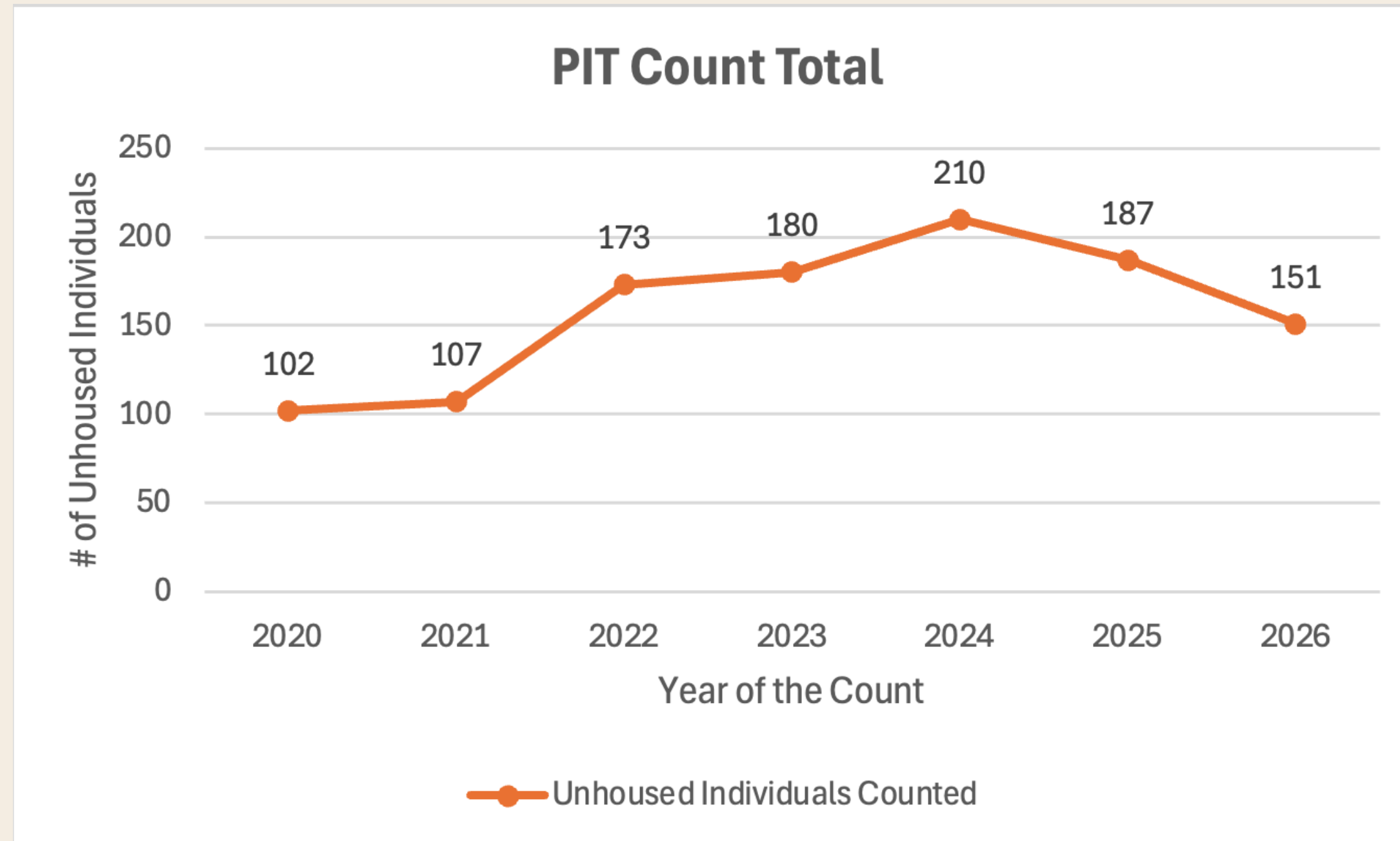
Approximately 21% (n=151) of the respondents identified as survivors of domestic violence

HAYS MAP

Buda-1
Kyle-6
San Marcos- 144



PIT COUNT TRENDS OVER TIME



Despite a decline in total homelessness, the increase in unsheltered individuals (55 to 94) suggests growing system strain and barriers to accessing shelter, indicating a shift toward more acute and visible forms of homelessness.

MCKINNEY -VENTO REPORT DATA

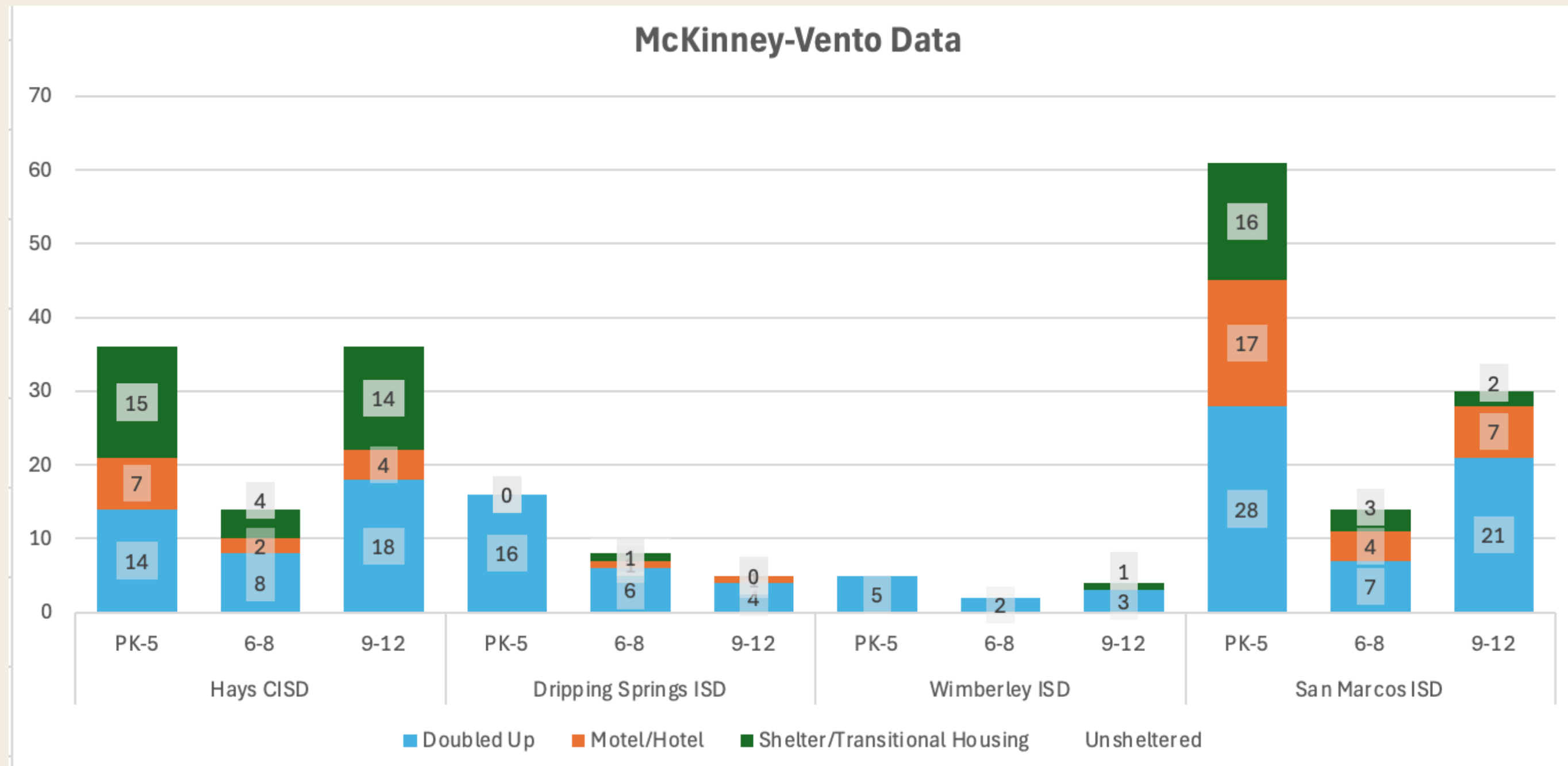
The McKinney-Vento Act is a U.S. federal law that provides protections and support for homeless students.

The MKV definition of “homeless children and youths” includes:

i) children and youths who are sharing the housing of other persons due to loss of housing, economic hardship, or a similar reason; are living in motels, hotels, trailer parks, or camping grounds due to the lack of alternative adequate accommodations; are living in emergency or transitional shelters; or are abandoned in hospitals

1. children and youths who have a primary nighttime residence that is a public or private place not designed for or ordinarily used as a regular sleeping accommodation for human beings
2. children and youths who are living in cars, parks, public spaces, abandoned buildings, substandard housing, bus or train stations, or similar settings; and
3. migratory children who qualify as homeless for the purposes of this subtitle because the children are living in circumstances described in clauses (i) through (iii).

MCKINNEY -VENTO REPORT DATA



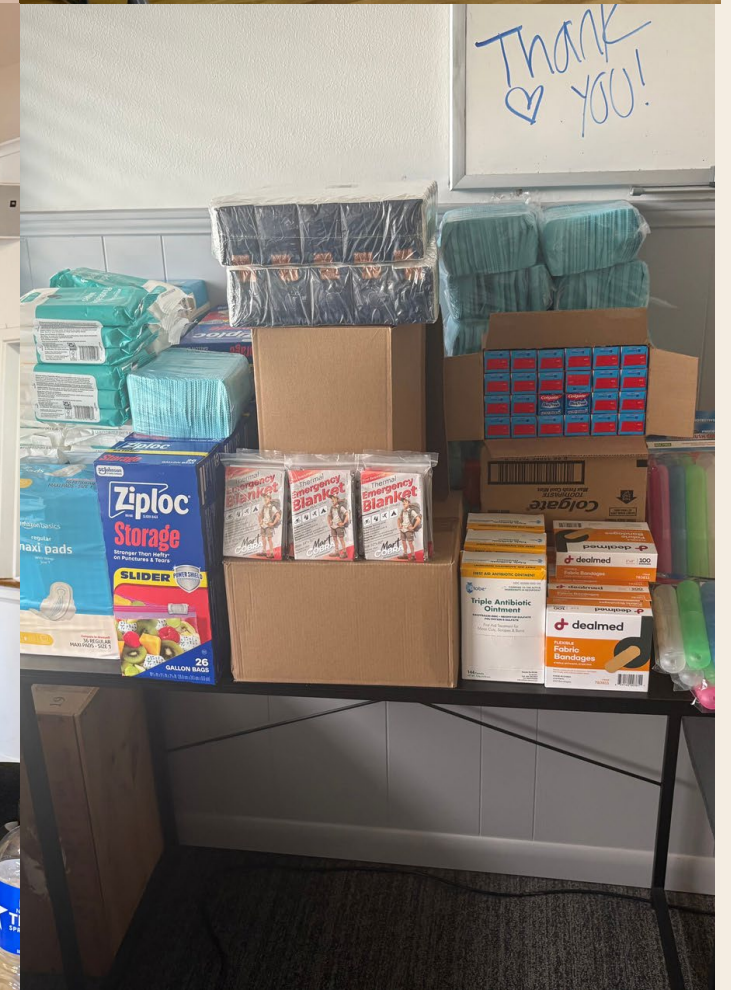
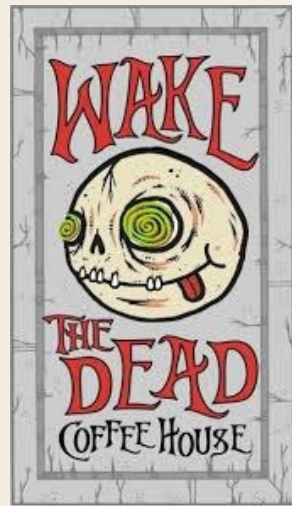
Hays Total: 87

DS ISD Total: 35

Wimberley ISD: 11

SM ISD: 105

A BIG THANK YOU!



NOTES

- Please note that the number of respondents (n) varies by question.
- Responses categorized as “prefer not to answer,” “does not know,” “data not collected,” and “refused” have been excluded from the visualizations.

QUESTIONS?

Homeless Coalition of Hays
County: hayscounty.lhc@gmail.com

