

EXHIBIT B
AUTHORIZATION OF CHANGE IN SERVICE

CONTRACT NAME:	License Plate Recognition Software & Hardware	# 224-065
CONTRACTOR:	Flock Group, Inc.	
ORIG. CONTRACT DATE:	January 1, 2024	RESOLUTION NO: N/A
CITY REPRESENTATIVE:	Sheila Scheutz	DEPT: Police
DATE:	January 3, 2025	ACIS NO.: 1

DESCRIPTION OF WORK TO BE ADDED TO OR DELETED FROM SCOPE OF SERVICES:

This contract is hereby amended to include 19 additional cameras. Exhibit 1 & 2 were previously signed by Chief Standridge and City Manager Stephanie Reyes. This will be on the February 4, 2025 City Council meeting.

Pricing and scope of services shall be set out in the attached quotes.

Parties agree to be bound by the City's Standard Terms & Conditions found:
sanmarcostx.gov/StandardTermsandConditions which shall control over any other terms.

Original Contract Amount	\$47,068.49	
Previous Increases:	\$0.00	
CURRENT CONTRACT AMOUNT:	\$47,068.49	
This Annual Increase Amount:	\$77,000.00	
REVISED TOTAL CONTRACT AMOUNT:	\$124,068.49	

CONTRACTOR: Flock Safety Group, Inc.

Already signed by vendor
Signature _____

Date

Print Full Name / Title (if not in individual capacity)

CITY:

by Chief Standridge & City Manager Stephanie Reyes
Signature _____

Date

Print Name / Title

City Department Use Only Below This Line (PM, POC, etc.).

Account Number(s):	Amount	Date

EXHIBIT 1

Flock Safety + TX - San Marcos PD

Flock Group Inc.
1170 Howell Mill Rd, Suite 210
Atlanta, GA 30318

MAIN CONTACT:
Sean Finck
sean.finck@flocksafety.com
+17146566876

flock safety

flock safety

ORDER FORM

This order form ("Order Form") hereby incorporates and includes the terms of the previously executed agreement (the "Terms") which describe and set forth the general legal terms governing the relationship (collectively, the "Agreement"). The Terms contain, among other things, warranty disclaimers, liability limitations and use limitations.

This additional services Agreement will be effective when this Order Form is executed by both Parties (the "Effective Date")

Customer: TX - San Marcos PD
 Legal Entity Name: TX - San Marcos PD
 Accounts Payable Email: espriegel@sanmarcostx.gov
 Address: 2300 I 35 San Marcos, Texas 78666

Initial Term: 24 Months
 Renewal Term: 24 Months
 Payment Terms: Net 30
 Billing Frequency: Annual Plan - First Year Invoiced at Signing.
 Retention Period: 30 Days

Hardware and Software Products

Annual recurring amounts over subscription term

Item	Cost	Quantity	Total
Flock Safety Platform			\$38,000.00
Flock Safety LPR Products			
Flock Safety Falcon ®	Included	6	Included
Solar Falcon ® LR	Included	4	Included

Professional Services and One Time Purchases

Item	Cost	Quantity	Total
One Time Fees			
Flock Safety Professional Services			
Professional Services - Standard Implementation Fee	\$650.00	3	\$1,950.00
Professional Services - Advanced Implementation Fee	\$1,900.00	1	\$1,900.00
Professional Services - Existing Infrastructure Implementation Fee	\$150.00	2	\$300.00
Professional Services - Solar Implementation Fee	\$750.00	2	\$1,500.00
Professional Services - Existing Infrastructure Implementation Fee	\$150.00	2	\$300.00
Subtotal Year 1:			\$43,950.00
Annual Recurring Subtotal:			\$38,000.00
Estimated Tax:			\$0.00
Contract Total:			\$81,950.00

Taxes shown above are provided as an estimate. Actual taxes are the responsibility of the Customer. This Agreement will automatically renew for successive renewal terms of the greater of one year or the length set forth on the Order Form (each, a "Renewal Term") unless either Party gives the other Party notice of non-renewal at least thirty (30) days prior to the end of the then-current term.

Billing Schedule

Billing Schedule	Amount (USD)
Year 1	
At Contract Signing	\$43,950.00
Annual Recurring after Year 1	\$38,000.00
Contract Total	\$81,950.00

*Tax not included

Product and Services Description

Flock Safety Platform Items	Product Description	Terms
Flock Safety Falcon ®	An infrastructure-free license plate reader camera that utilizes Vehicle Fingerprint® technology to capture vehicular attributes.	The Term shall commence upon first installation and validation of Flock Hardware.

One-Time Fees	Service Description
Installation on existing infrastructure	One-time Professional Services engagement. Includes site & safety assessment, camera setup & testing, and shipping & handling in accordance with the Flock Safety Advanced Implementation Service Brief.
Professional Services - Standard Implementation Fee	One-time Professional Services engagement. Includes site and safety assessment, camera setup and testing, and shipping and handling in accordance with the Flock Safety Standard Implementation Service Brief.
Professional Services - Advanced Implementation Fee	One-time Professional Services engagement. Includes site & safety assessment, camera setup & testing, and shipping & handling in accordance with the Flock Safety Advanced Implementation Service Brief.

FlockOS Features & Description

FlockOS Features	Description
------------------	-------------

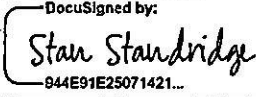
By executing this Order Form, Customer represents and warrants that it has read and agrees to all of the terms and conditions contained in the previously executed agreement.

The Parties have executed this Agreement as of the dates set forth below.

FLOCK GROUP, INC.

By: _____
Name: Mark Smith
Title: General Counsel
Date: _____

Customer: TX - San Marcos PD

By: 
Name: Stan Standridge
Title: _____
Date: 8/23/2024
PO Number: _____

Customer Implementation Guide

Law Enforcement



flock safety

Table of Contents



Implementation Timeline	2
Flock Safety Team	3
Implementation Service briefs: Existing Infrastructure vs Standard vs Advanced	6
• Existing Infrastructure Implementation	
• Standard Implementation	
• Advanced Implementation	
Things to Consider When Selecting Locations	12
Customer Responsibilities: AC-Powered Cams	14
Electrician Handout	15
• Electrician Installation Steps	
• FAQs about AC-Powered Flock Cameras	
Installation Service Brief Summary	18
Permitting: Pre-Install Questionnaire	19
1. Timeline	
2. Right of Way	
3. AC Power vs. Solar	
4. Traffic Control & Installation Methods	
5. Paperwork & Required Forms	
6. Contacts	
*Fee Schedule	21
Help Center	22
Customer Support	22



Implementation Timeline

This timeline provides general guidance and understanding of your installation process. While we typically complete installations 6-8 weeks after locations have been finalized, delays can occur as noted in the timeline below:



Flock Safety Team

Implementation Team	How They Will Support You
 <p data-bbox="240 722 503 758">Project Manager</p>	<p data-bbox="618 417 1333 501">Your Project Manager is your primary contact during camera installation.</p> <p data-bbox="618 533 1395 848">Your project manager will guide you through the entire installation process, keeping you apprised of all implementation updates as well as answering any questions you have during this time. They will ensure that all the cameras are on the ground and operating for at least 48 hours before transitioning you to your Customer Success Manager.</p>
 <p data-bbox="245 1331 505 1409">Field Operations Team</p>	<ul data-bbox="634 1031 1403 1803" style="list-style-type: none"> • The Field Operations team is responsible for the physical installation and maintenance of cameras and associated equipment provided by Flock. This includes a large team of technicians, schedulers, and many others involved in ensuring the delivery of the product. • They take the technical plan you finalized with Product Implementation and work closely with other teams at Flock to make sure that the cameras are installed quickly and safely and in a way that maximizes the opportunity to solve crime at a specific location. • *Note*: For all Installation questions or concerns, please always direct them to your Customer Success Manager and not the technician.

Relationship Team	How They Will Support You
 <p data-bbox="227 688 529 772">Customer Success Manager</p>	<p data-bbox="621 399 1391 483">Your Customer Success Manager is your strategic partner for your lifetime as a Flock customer.</p> <p data-bbox="621 516 1391 646">While the cameras are getting installed, your CSM will help get your account set up and get all key users trained on the system.</p> <p data-bbox="621 680 1391 810">Post-Camera-Installation, your CSM will be your go-to for most account-related needs: You should reach out to them to:</p> <ul data-bbox="639 827 1404 1180" style="list-style-type: none"> • Set up Account Training • Understand benefits of features • Learning best practices for getting relevant data • Identifying opportunities to expand the security network in your area • Provide feedback on your partnership with Flock
 <p data-bbox="276 1627 475 1711">Flock Safety Support</p>	<p data-bbox="621 1333 1404 1556">The Flock Safety Support team is committed to answering all your day-to-day questions as quickly as possible. To get in touch with support, simply email support@flocksafety.com or call 866-901-1781 Mon-Fri 8am-8pm EST.</p> <p data-bbox="621 1566 959 1602">Support can help you:</p> <ul data-bbox="639 1621 1404 1885" style="list-style-type: none"> • Request camera maintenance • Troubleshoot online platform • Contract / Billing questions • Update account information • Camera Sharing questions • Quick “How to” questions in your Flock Account

Outside Party	When They May Be Involved
Electrician/Street Department	If the Flock cameras need to be AC powered, you (customer) are responsible for providing an electrician to ensure power connectivity
Public Works (LE)	To weigh in on the use of public Rights of Way or property
Department of Transportation (DOT), City, or County agencies	If installation in your area requires permitting

PLEASE NOTE: On some occasions, third parties outside of Flock Safety may be (or need to be) involved in your implementation.

Implementation Service Briefs: Existing Infrastructure vs Standard vs Advanced

	Existing Infrastructure Install	Standard Install	Advanced Install
Pole	None	Flock	NCHRP 350 / MASH
Timeline	Short	Medium	Longest
Cost	Lowest	Mid	Highest

Existing Infrastructure Implementation

COST: \$150 per camera (one time cost)

Included In Scope:

Once designated locations are approved by the customer, as part of the **Existing Infrastructure Implementation Service** Flock will perform the following:

- An in-person site survey to confirm the installation feasibility of a location (location assessment, solar assessment, visibility review, etc.)
 - Cameras need sufficient power. Since a solar panel is required per camera, it can prevent adequate solar power if two cameras and two solar panels are on a single pole (blocking visibility). Therefore if relying on solar power, only one camera can be installed per pole.
- Confirm that a location is safe for work by following State utility locating procedures.
- Each installation may include the following:
 - Installation of camera and solar panel or AC adapter box on a suitable existing pole

- Types of existing infrastructure such as existing utility, light, and traffic signal poles.
- Pole no higher than 8'-12' (approval at Flock Safety's discretion)
- Flock will provide and mount an AC adapter unit that a qualified electrician can connect to AC power following our **electrical wiring requirements**. Flock is unable to make any AC connections or boreholes in any material other than dirt, grass, loose gravel (or other non-diggable material). Electrical work requiring a licensed electrician and associated costs, not included in the scope.
 - Access requiring up to a 14' using an A-frame ladder
 - Standard MUTCD traffic control procedures performed by a Flock technician
- Obtain a business license to operate in the city and state of camera location

Out Of Scope:

By default, Flock does **not** include the following as part of the **Existing Infrastructure Implementation Service** but can provide a quote for sourcing at an additional cost:

- Mounting on mast arms (always require bucket truck and traffic control)
- Call 811 'Call-before-you-Dig' system
- Installation of any poles including but not limited to
 - Standard, 12' above grade **Flock breakaway pole**
 - NCHRP 350 or MASH approved pole (as may be required for locations in DOT right of way)
- A Bucket Truck for accessing horizontal/cross-beams and/or height above 14'
- Special equipment rentals for site access
- Site-specific engineered traffic plans
- Third-party provided traffic control
- State or city-specific specialty contractor licenses or unique attachment/connection requirements
- Custom engineered drawings
- Electrical work requires a licensed electrician.

- Flock will provide and mount an AC adapter that a qualified electrician can connect to AC power but cannot make any AC connections or boreholes in any material other than dirt, grass, loose gravel (or other non-diggable material).
- Concrete cutting
- Private utility search for privately owned items not included in standard 811 procedures (communication, networking, sprinklers, etc.)
- Upgrades to power sources to ready them for Flock power (additional fuses, switches, breakers, etc.)
- Any fees or costs associated with filing for required city, county, or state permits
- Licensing or attachment agreements with asset / infrastructure owners
- Utility contracts and billing
- Customer requested relocations (see fee schedule)

Standard Implementation

COST: \$650 per camera (one time cost)

Included In Scope:

Once designated locations are approved by the customer, as part of the **Standard Implementation Service** Flock will perform the following:

- An in-person site survey to confirm the installation feasibility of a location (location assessment, solar assessment, visibility review, etc.)
- Confirm that a location is safe for work by following state utility locating procedures. Work with local utilities to prevent service interruptions during the installation
 - Engage 811 'Call-before-you-Dig' system to receive legal dig date
 - Apply approved markings Coordinate with 811 regarding any necessary high-risk dig clearances or required vendor meets
- Each installation may include the following:
 - Installation of camera and solar panel with **standard, 12' above grade Flock breakaway pole**

- Installation of camera and AC adapter that a qualified electrician can connect to AC power on a suitable existing pole, no higher than 8-12' (approval at Flock Safety's discretion)
 - Flock will provide and mount an AC adapter that a qualified electrician can connect to AC power following our **electrical wiring requirements**. Flock is unable to make any AC connections or boreholes in any material other than dirt, grass, loose gravel (or other non-diggable material). Electrical work requiring a licensed electrician and associated costs, not included in the scope.
- Access requiring up to a 14' A-frame ladder
- Standard MUTCD traffic control procedures performed by a Flock technician
- Obtain a business license to operate in the City and State of camera location

Out Of Scope:

By default, Flock does **not** include the following as part of the Standard Implementation Service but can provide a quote for sourcing at an additional cost:

- Use and/or mounting to existing infrastructure.
- NCHRP 350 or MASH approved pole (as may be required for locations in DOT right of way)
- A Bucket Truck for accessing horizontal/cross-beams and/or height above 14'
- Special equipment rentals for site access
- Site-specific engineered traffic plans
- Third-party provided traffic control
- State or city-specific specialty contractor licenses
- Custom engineered drawings
- Electrical work requires a licensed electrician.
 - Flock will provide and mount an AC adapter that a qualified electrician can connect to AC power but cannot make any AC connections or boreholes in any material other than dirt, grass, loose gravel (or other non-diggable material).
- Concrete cutting
- Private utility search for privately owned items not included in standard 811 procedures (communication, networking, sprinklers, etc.)

- Upgrades to power sources to ready them for Flock power (additional fuses, switches, breakers, etc.)
- Any fees or costs associated with filing for required city, county, or state permits
- Licensing or attachment agreements with asset / infrastructure owners
- Utility contracts and billing
- Customer requested relocations (see fee schedule)

Advanced Implementation

COST: \$1,900 per camera (one time cost)

Included In Scope:

Once Designated Locations are confirmed, as part of the **Advanced Implementation Service**, Flock will perform the following:

- An in-person site survey to confirm the installation feasibility of a location (location assessment, solar assessment, visibility review, etc.)
- Confirm that a location is safe for work by following State utility locating procedures. Work with local utilities to prevent service interruptions during the installation
 - Engage 811 'Call-before-you-Dig' system to receive legal dig date
 - Apply approved markings Coordinate with 811 regarding any necessary high-risk dig clearances or required vendor meets
- Each installation may include the following:
 - Installation of camera and solar panel on a suitable **NCHRP 350 or MASH** approved pole.
 - Installation of camera and AC adapter that a qualified electrician can connect to AC power.
 - Flock will provide and mount an AC adapter that a qualified electrician can connect to AC power following our electrical wiring requirements. Flock cannot make any AC connections or boreholes in any material other than dirt, grass, loose gravel (or other non-diggable material).

Electrical work requiring a licensed electrician and associated costs, not included in the scope.

- Access requiring up to a 14' A-frame ladder
- Standard MUTCD traffic control procedures performed by a Flock technician
- Obtain a business license to operate in the City and State of camera location

Out Of Scope:

By default, Flock does not include the following as part of the **Advanced Implementation Service** but can optionally provide a quote for sourcing (additional cost):

- Installation on **Standard, 12' above grade Flock breakaway pole** or existing infrastructure.
- A Bucket Truck for accessing horizontal/cross-beams and/or height above 14'
- Special equipment rentals for site access
- Site-specific engineered traffic plans
- Third-party provided traffic control
- State or City-specific specialty contractor licenses
- Custom engineered drawings
- Electrical work requires a licensed electrician. Flock will provide and mount an AC adapter that a qualified electrician can connect to AC power but cannot make any AC connections or boreholes in any material other than dirt, grass, loose gravel (or other non-diggable material).
- Concrete cutting
- Private utility search for privately owned items not included in standard 811 procedures (communication, networking, sprinklers, etc.)
- Upgrades to power sources to ready them for Flock power (additional fuses, switches, breakers, etc.)
- Fees or costs associated with filing for required City, County, or State permits

Things to Consider When Selecting Locations

Falcon Cameras



- Use Cases
 - Flock LPRs are designed to capture images of rear license plates aimed in the direction of traffic.
 - Flock LPRs are not designed to capture pedestrians, sidewalks, dumpsters, gates, other areas of non-vehicle traffic, intersections.
- Placement
 - They capture vehicles driving away from an intersection.
 - They cannot point into the middle of an intersection.
 - They should be placed after the intersection to prevent stop and go motion activation or “stop and go” traffic.
- Mounting
 - They can be mounted on existing utility, light, traffic signal poles, or 12 foot Flock poles.*
 - They should be mounted one per pole.** If using AC power, they can be mounted 2 per pole.
- They can be powered with solar panels or direct wire-in AC Power (no outlets).***
- They will require adequate cellular service using AT&T or T-Mobile to be able to process & send images.

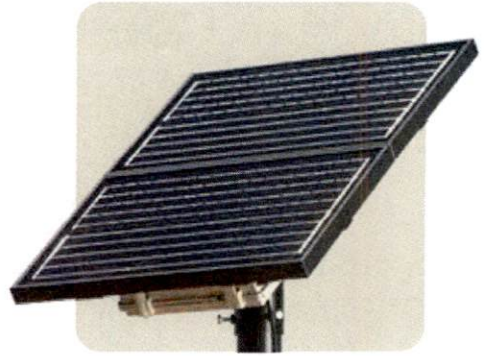
* Permitting (or permission from pole owner) may be required to use existing infrastructure or install in specific areas, depending on local regulations & policies.

** Cameras need sufficient power. Since a solar panel is required per camera, it can prevent adequate solar power if two cameras and two solar panels are on a single pole (blocking visibility). Therefore if relying on solar power, only one camera can be installed per pole.

*** Flock does not provide Electrical services. Once installed, the agency or community must work with an electrician to wire the cameras. Electrician services should be completed within two days of installation to prevent the camera from dying.

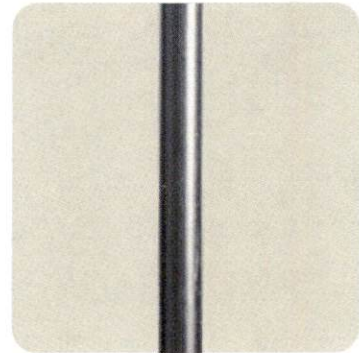
Solar Panels

Solar panels need unobstructed southern-facing views.



Pole

If a location requires a "DOT Pole" (i.e., Advanced Pole, **not** Flock standard pole), the implementation cost will be \$5,000/camera.



Customer Responsibilities: AC-Powered Cams

If the Flock cameras need to be AC-powered, the **customer is responsible** for acquiring an electrician and ensuring they connect the camera to power. **See steps 2 and 6 below.**

How to Get Started with a Powered Install



1. Create a Deployment Plan

Work with us to select the best location(s) for Flock Safety cameras and power sources



2. Acquire an Electric Quote

Contact an electrician to receive a quote to run 120volt AC power to the camera



3. Sign Flock Safety Agreement

Sign the Flock Safety purchase order to begin the installation of cameras



4. Conduct Site Survey

Flock will mark camera locations, locate underground utilities and mark if present



5. Install Camera

Flock will install the camera and AC power kit at the specified camera location



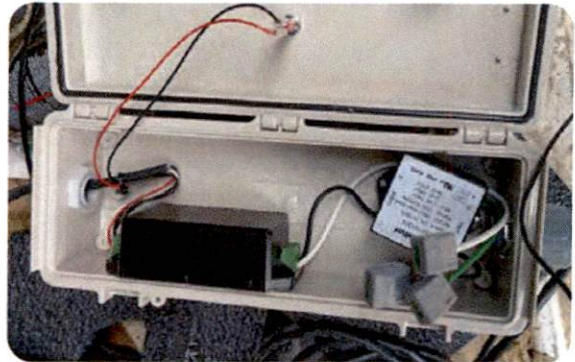
6. Connect Camera to Power

Notify the electrician that the camera is ready for the power connection installation

Electrician Handout

Electrician Installation Steps

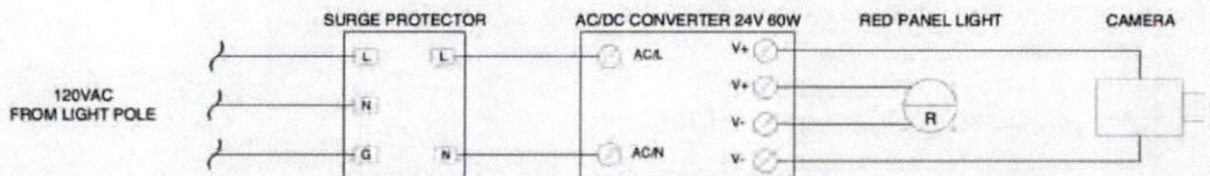
1. Run AC cable and conduit to the box according to NEC Article 300 and any applicable local codes. The gland accepts 1/2" conduit.
2. Open the box using hinges.
3. Connect AC Mains per wiring diagram below:
 - a. Connect AC Neutral wire to the Surge Protector white Neutral wire using the open position on the lever nut.
 - b. Connect AC Line wire to the Surge Protector black Line wire using the open position on the lever nut.
 - c. Connect AC Ground wire to the Surge Protector green ground wire using the open position on the lever nut.
4. Verify that both the RED LED is lit on the front of the box
5. Close box and zip tie the box shut with the provided zip tie
6. While still on-site, call Flock, who will remotely verify that power is working correctly:



Southeast Region - (678) 562-8766

West-Region - (804) 607-9213

Central & NE Region - (470) 868-4027



FAQs about AC-Powered Flock Cameras

What voltage is supported?

The AC kit is designed to work with 120VAC Infrastructure by default. A 240VAC version is available on request.

How much power does this consume?

Peak current draw is 1.5 A at 120VAC. The average power draw is roughly 30W in high traffic conditions but maybe lower when fewer vehicles are present.

Who is responsible for contracting the electrician?

The customer is responsible for contracting an electrician. We can help answer questions, but the customer is responsible for identifying and contracting an electrician.

Who is responsible for maintenance?

Flock will handle all maintenance related to Flock's camera and power equipment. However, any problems with the electrical supply are the customer's responsibility. The AC junction box has two lights to indicate the presence of power and make it easy for quick diagnosis if there is a problem related to the AC power source.

- If the camera indicates to Flock that there is a power supply problem, Flock will notify the customer and request that the customer verifies the lights on the AC junction box. If the AC Source light is illuminated, Flock will send a technician to investigate. If the AC source light is not illuminated, the customer should check any GFCI's or breakers in the supply circuit or call the electrician who installed the power supply.

How much does it cost?

Work required to bring AC power to each location will be different, so exact pricing is unavailable. Primary cost drivers include arrow boards and the distance from the camera location to the AC power source.

What information do I need to provide my electrician?

The Flock deployment plan and these work instructions should be sufficient to secure a quote. It will be helpful if you know the location of the existing power infrastructure before creating the deployment plan.

Can you plug it into my existing power outlet? The Flock AC power adapter does not use a standard outlet plug but must be directly wired into the power mains. While using outlet plugs may be convenient, they can easily be unplugged, presenting a tampering risk to this critical safety infrastructure. The electrician can route power directly to the camera with a direct wire-in connection if an outlet is close to the camera.

How long does this process typically take?

The installation process typically takes 6-8 weeks. To accelerate the process, be sure to have the electrician perform his work shortly after the Flock technician finishes installing the camera.

What kind of electrician should I look for?

Any licensed electrician should perform this work, though we have found that those who advertise working with landscape lighting are most suited for this work.

What happens if the electrician damages the equipment?

The customer is responsible for contracting the electrician. Any liability associated with this work would be assumed by the customer. If any future work is required at this site due to the electrical infrastructure or the work performed by the electrician would be the responsibility of the customer.

When should the electrician perform his work?

Once Flock installs the camera, you will receive an email alert letting you know that this has been completed. After this, you will need to schedule the electrician to route power to the pole.

What if my electrician has questions about Flock's AC Kit?

You should share the **AC-Power Kit Details** packet with the electrician if they have questions.

What if the AC power is on a timer?

Sometimes the AC power will be on a timer (like used for exterior lighting). Flock requires that the AC power provided to the camera be constant. The source that the electrician uses must not be on a timing circuit.

Installation Service Brief Summary

Below outlines the statement of work for the Flock Camera Installation:

What Is Covered By Flock	What Is NOT Covered By Flock	Special Note
Flock Cameras & Online Platform	Traffic Control And Any Associated Costs	
Mounting Poles	*DOT Approved Pole Cost Electrician & Ongoing Electrical Costs	
AC Power Kit (As Needed)	Engineering Drawings	
Solar Panels (As Needed)	Relocation Fees	<i>Excluding Changes During Initial Installation</i>
Site Surveys And Call 811 Scheduling	Contractor Licensing Fees	
Installation Labor Costs	Permit Application Processing Fees	
Customer Support / Training	Specialist Mounting Equipment	<i>Including, But Not Limited To, **MASH Poles Or Adapters</i>
Cellular Data Coverage	Bucket Trucks	
Maintenance Fees (Review Fees Sheet For More Details)	Loss, Theft, Damage To Flock Equipment	
Data Storage For 30 Days	Camera Downtime Due To Power Outage	<i>Only Applicable For AC-Powered Cameras</i>
	***Field Technician Maintenance For Falcon™ Flex	

*If a location requires a "DOT pole" (i.e., not our standard), the implementation cost will be \$5,000/camera; This cost is applicable for installations in GA, IL, SC, TN, and CA.

**MASH poles: Manual for Assessing Safety Hardware (MASH) presents uniform guidelines for crash testing permanent and temporary highway safety features and recommends evaluation criteria to assess test results

***If a camera is lost, stolen, or damaged, a replacement device can be purchased at a discounted price of \$800

Permitting: Pre-Install Questionnaire

1. Timeline

- In Flock Safety's experience, in-depth permitting requirements can **add 2+ months to the installation timeline.**
- The SLA for permit document submission is within 15 days from contract signature date (contract Closed-Won)

2. Right of Way

- Will any Flock Safety cameras be installed on the city, state, or power company-owned poles or in the city, county, or state Right of Way (RoW)?
 - What is the RoW buffer?
 - Will additional permits or written permission be required from third-party entities (such as DOT, power companies, public works, etc.)?
- Will any cameras be installed on city-owned traffic signal poles (vertical mass)?
 - If yes, please provide heights/photos to determine if a bucket truck is needed for the installation.
 - Note: A bucket truck is required if the height exceeds 15 feet tall.

3. AC Power vs. Solar

- If AC powered, is there a 120V power source available, and is there access to an electrician who can connect the existing wire to the Flock Safety powered **installation kit**?
- If solar-powered, consider the size of the solar panel and potential to impact the visibility of DOT signs/signals:
 - Single Panel: 21.25" x 14" x 2" (Length x Width x Depth)
 - Double Panel: 21.25" x 28" x 2" (LxWxD)

4. Traffic Control & Installation Methods

- **If a bucket truck is required**, this typically necessitates an entire lane to be blocked in the direction of travel. **Can you provide a patrol car escort, or will full traffic control be required?***

PLEASE NOTE: If traffic control is required, you may incur additional costs due to city/state requirements; Fees will be determined by quotes received.

- **If full traffic control is required (cones, arrow boards, etc.):**

- Will standard plans suffice, or are custom plans needed? Custom plans can double the cost, while standard plans can be pulled from the Manual of Uniform Traffic Control Devices (**MUTCD**).
- Will a non-sealed copy of the traffic plan suffice? Or does the traffic plan need to be sealed and/or submitted by a professional engineer?
- Are there state-specific special versions/variances that must be followed?

- **If a bucket truck is *not* required**, the shoulder or sidewalk should suffice and enable Flock Safety to proceed without traffic control systems in place.

- Note: In some states (i.e., arrow boards), sidewalks may require signage. If signage is mandatory, Will your Public Works department be able to assist?

5. Paperwork & Required Forms

- Flock Safety will need copies of paperwork to complete before proceeding (ex., business license applications, encroachment permit applications). We can save critical time by gathering these documents upfront. We appreciate your assistance in procuring these.

6. Contacts

- If Flock Safety needs to interface directly with the departments, please share the contact information of the following departments:
 - Permitting
 - Public Works
 - Traffic Department

***Fee Schedule**

After a deployment plan with Designated Locations and equipment has been agreed upon by both Flock and the Customer, any subsequent changes to the deployment plan ("Reinstalls") driven by a Customer's request will incur a fee per the table below.

What Services Incur Fees:

- Requested relocations post-approval by customer
- Relocations due to poor performance will be the responsibility of Flock
 - If a customer requests a location against the advisement of Flock, performance issues and any requested relocations will be the responsibility of the customer.
- Per the contract and absent a defect, in the event that Flock Hardware is lost, stolen, or damaged, Customer may request that Flock replace the Flock Hardware at a fee according to the then-current Reinstall policy
[**https://www.flocksafety.com/reinstall-fee-schedule**](https://www.flocksafety.com/reinstall-fee-schedule)
- Misc billables for out of scope items for each implementation

Incurred Fees:

- Camera relocation
 - Existing infrastructure (non-AC powered)..... **\$350**
 - Flock pole (non-AC powered)..... **\$750**
 - Advanced pole (non-AC powered)..... **\$5000**
- Replacements
 - Camera only as a result of vandalism, theft, or damage **\$800**
 - Pole replacement only as a result of vandalism, theft, or damage
 - Flock pole **\$500**
 - Advanced pole **\$5000**
 - Full replacement as a result of vandalism, theft, or damage
 - ▪ Flock pole, camera, and solar (non-AC Powered)..... **\$1300**
 - Advanced pole, camera, and solar (non-AC Powered)..... **\$5800**

- Trip charge\$350
 - Examples:
 - Angle adjustment (elective)
 - Install additional Flock signage

All fees are per reinstall or required visit (in the case that a reinstall is attempted but not completed) and include labor and materials. If you have any questions, please email support@flocksafety.com.

Help Center

Our Help Center is filled with many resources to help you navigate through the online platform. Below you will find some common questions and their relevant help article:

How do I search camera footage?

How do I add a user?

How do I add a vehicle to my own Hot List?

How do I enable browser notifications for Hot List alerts?

How do I get text alerts for Hot List?

How do I request camera access from other nearby agencies?

How do I use the National Lookup to search for a plate?

(National Lookup - network of law enforcement agencies that have opted to allow their network of Flock cameras to be used for searches)

How do I reset my / another user's password?

Customer Support

You can reach our customer support team anytime by emailing support@flocksafety.com. They can help answer any "How-To" questions you may have.

EXHIBIT 2

Flock Safety + TX - San Marcos PD

Flock Group Inc.
1170 Howell Mill Rd, Suite 210
Atlanta, GA 30318

MAIN CONTACT:
Sean Finck
sean.finck@flocksafety.com
+17146566876

flock safety



ORDER FORM

This order form (“**Order Form**”) hereby incorporates and includes the terms of the previously executed agreement (the “**Terms**”) which describe and set forth the general legal terms governing the relationship (collectively, the "**Agreement**"). The Terms contain, among other things, warranty disclaimers, liability limitations and use limitations.

This additional services Agreement will be effective when this Order Form is executed by both Parties (the “**Effective Date**”)

Customer:	TX - San Marcos PD	Initial Term:	24 Months
Legal Entity Name:	TX - San Marcos PD	Renewal Term:	24 Months
Accounts Payable Email:	espriegel@sanmarcostx.gov	Payment Terms:	Net 30
Address:	2300 I 35 San Marcos, Texas 78666	Billing Frequency:	Annual Plan - First Year Invoiced at Signing.
		Retention Period:	30 Days

Hardware and Software Products
Annual recurring amounts over subscription term

Item	Cost	Quantity	Total
Flock Safety Platform			\$27,000.00
Flock Safety LPR Products			
Flock Safety Falcon ®	Included	9	Included

Professional Services and One Time Purchases

Item	Cost	Quantity	Total
One Time Fees			
Flock Safety Professional Services			
Professional Services - Standard Implementation Fee	\$650.00	5	\$3,250.00
Professional Services - Existing Infrastructure Implementation Fee	\$150.00	2	\$300.00
Professional Services - MASH Tested Pole Implementation Fee - Non-Coastal Region	\$1,250.00	2	\$2,500.00
		Subtotal Year 1:	\$33,050.00
		Annual Recurring Subtotal:	\$27,000.00
		Estimated Tax:	\$0.00
		Contract Total:	\$60,050.00

Taxes shown above are provided as an estimate. Actual taxes are the responsibility of the Customer. This Agreement will automatically renew for successive renewal terms of the greater of one year or the length set forth on the Order Form (each, a “**Renewal Term**”) unless either Party gives the other Party notice of non-renewal at least thirty (30) days prior to the end of the then-current term.

Billing Schedule

Billing Schedule	Amount (USD)
Year 1	
At Contract Signing	\$33,050.00
Annual Recurring after Year 1	\$27,000.00
Contract Total	\$60,050.00

*Tax not included

Product and Services Description

Flock Safety Platform Items	Product Description
Flock Safety Falcon ®	Law enforcement grade infrastructure-free (solar power + LTE) license plate recognition camera with Vehicle Fingerprint ™ technology (proprietary machine learning software) and real-time alerts for unlimited users.
Professional Services - Standard Implementation Fee	One-time Professional Services engagement. Includes site and safety assessment, camera setup and testing, and shipping and handling in accordance with the Flock Safety Standard Implementation Service Brief.
Professional Services - Existing Infrastructure Implementation Fee	One-time Professional Services engagement. Includes site and safety assessment of existing vertical infrastructure location, camera setup and testing, and shipping and handling in accordance with the Flock Safety Standard Implementation Service Brief.
Professional Services - MASH Tested Pole Implementation Fee - Non-Coastal Region	MASH tested pole that meets DOT crashworthiness requirements. Includes materials, installation, and maintenance.

FlockOS Features & Description

FlockOS Features	Description
------------------	-------------

By executing this Order Form, Customer represents and warrants that it has read and agrees to all of the terms and conditions contained in the previously executed agreement.
The Parties have executed this Agreement as of the dates set forth below.

FLOCK GROUP, INC.

By:

Signed by:

Mark Smith

AC5C931454C24F3...

Name: Mark Smith
Title: General Counsel
Date: 9/26/2024

Customer: TX - San Marcos PD

By:

DocuSigned by:

Stephanie Reyes

997622DA93C94EC...

Name: Stephanie Reyes
Title: City Manager
Date: 9/26/2024

PO Number: