



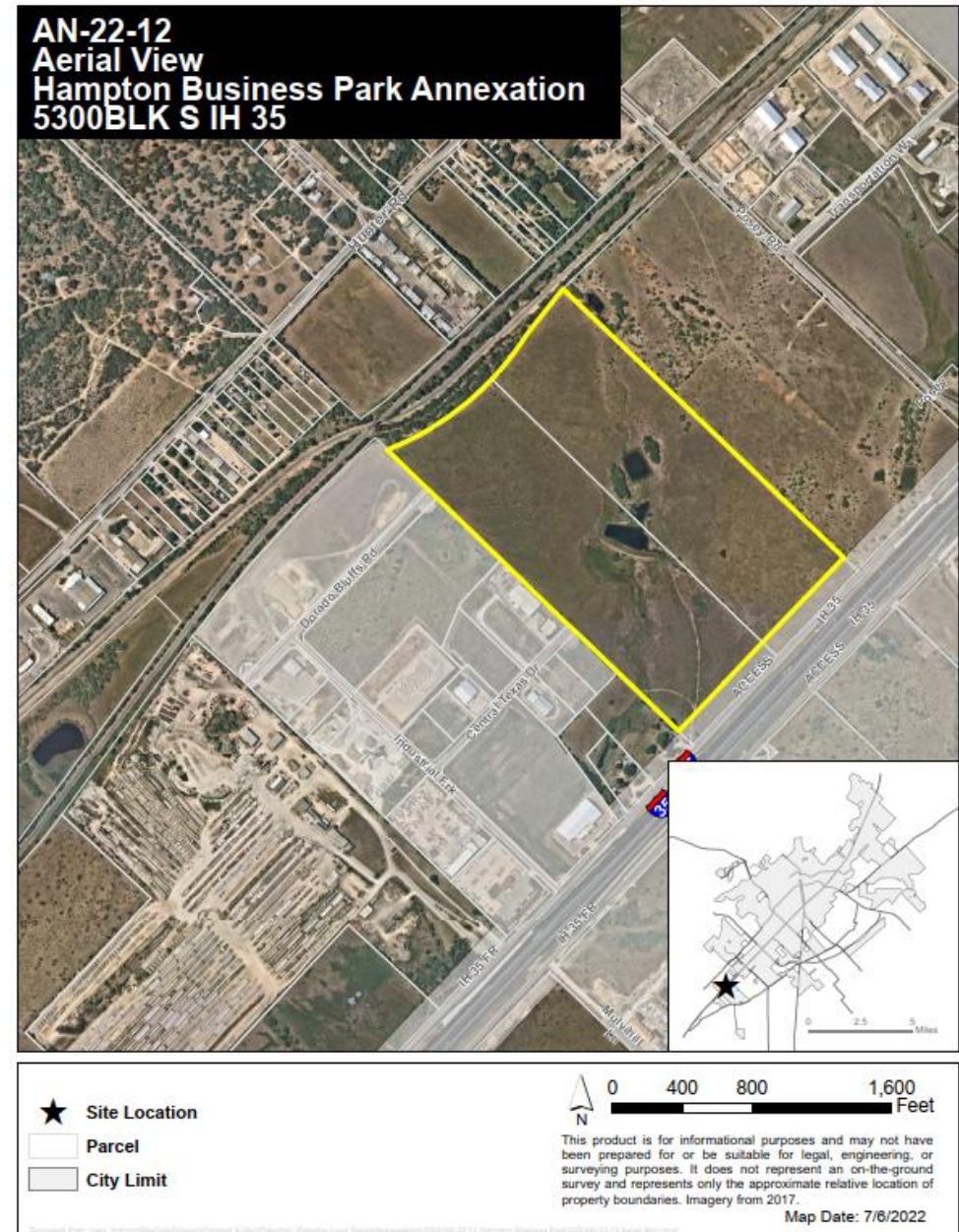
# **AN-22-12 (Hampton Business Park Annexation)**

Receive a staff presentation and hold a Public Hearing to receive comments for or against Ordinance 2022- XX annexing into the City approximately 69.407 acres of land out of the William H. Van Horn Survey, generally located between I-35 south and the Union Pacific railroad, approximately 1,000 ft south of Posey Road (Case No. AN-22-12 Hampton Business Park); including procedural provisions; and providing an effective date; and consider approval of Ordinance 2022-XX, on the first of two readings.



## Context:

- Approximately 69 acres
- Located on the I-35 S Frontage road, between Posey and H&H Industrial Parks.
- Adjacent I-35 ROW is already within the City limits.
- Utilities
  - Pedernales Electric
  - City Water and Wastewater (proposed)

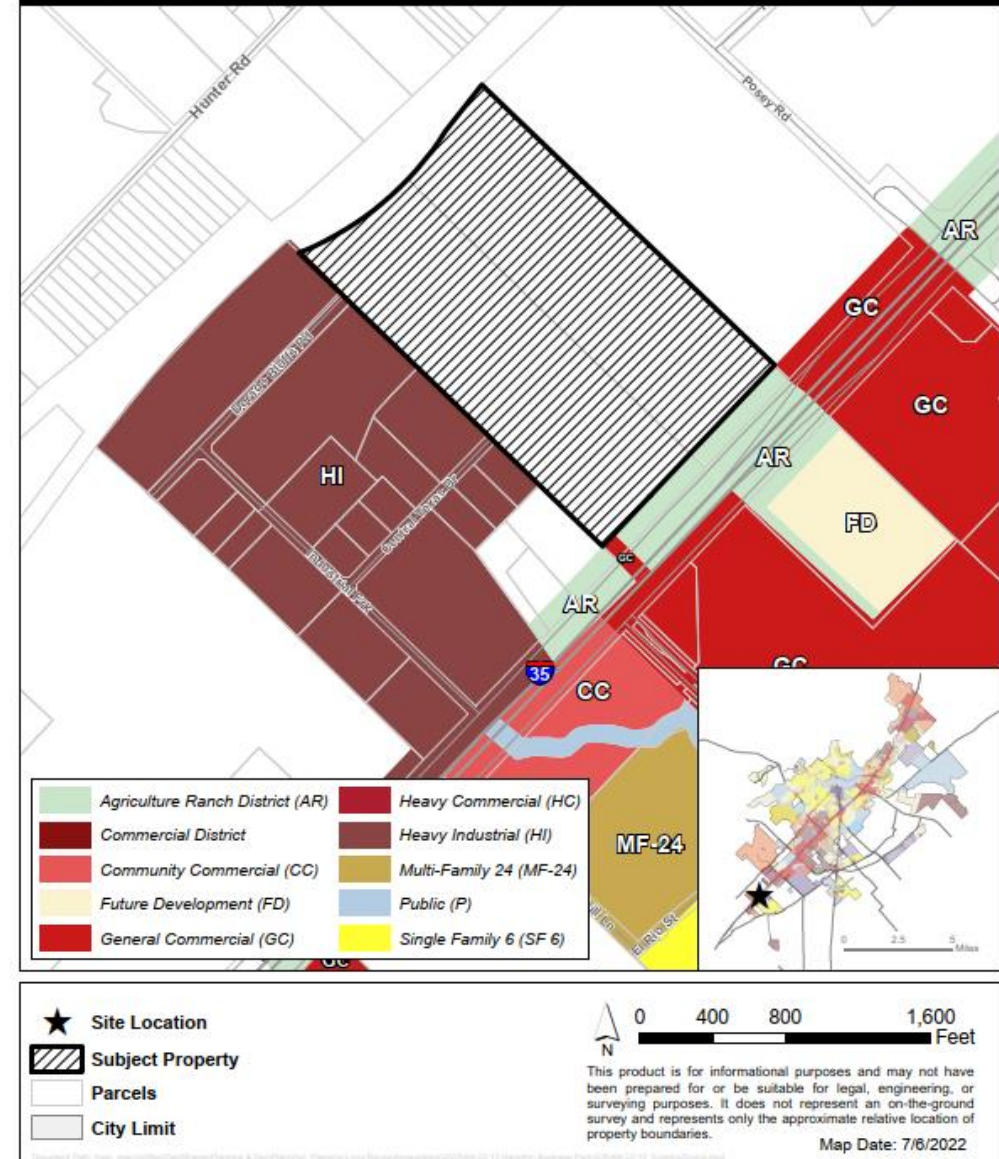




## Context:

- Accompanied by 3 separate zoning change requests
  - ZC-22-25: Heavy Industrial (7.25 acres)
  - ZC-22-26: Light Industrial (1.95 acres)
  - ZC-22-27: Heavy Commercial (15.6 acres)
  - 1.1 acres on SW corner has no accompanying zoning request (will remain “FD”)

### AN-22-12 Existing Zoning Hampton Business Park Annexation - 5300BLK S IH 35



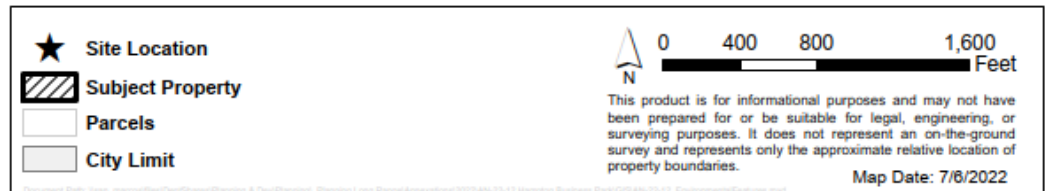
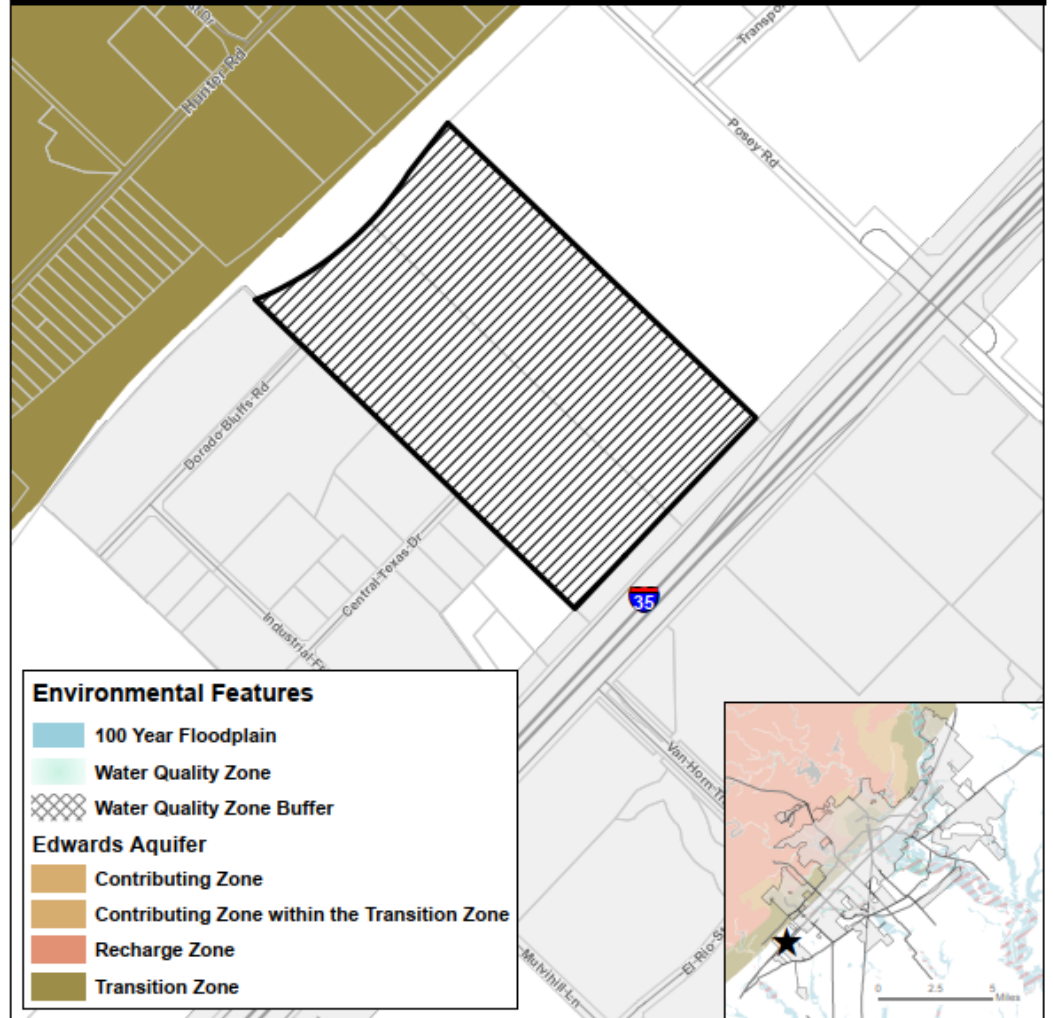




# Environmental Features

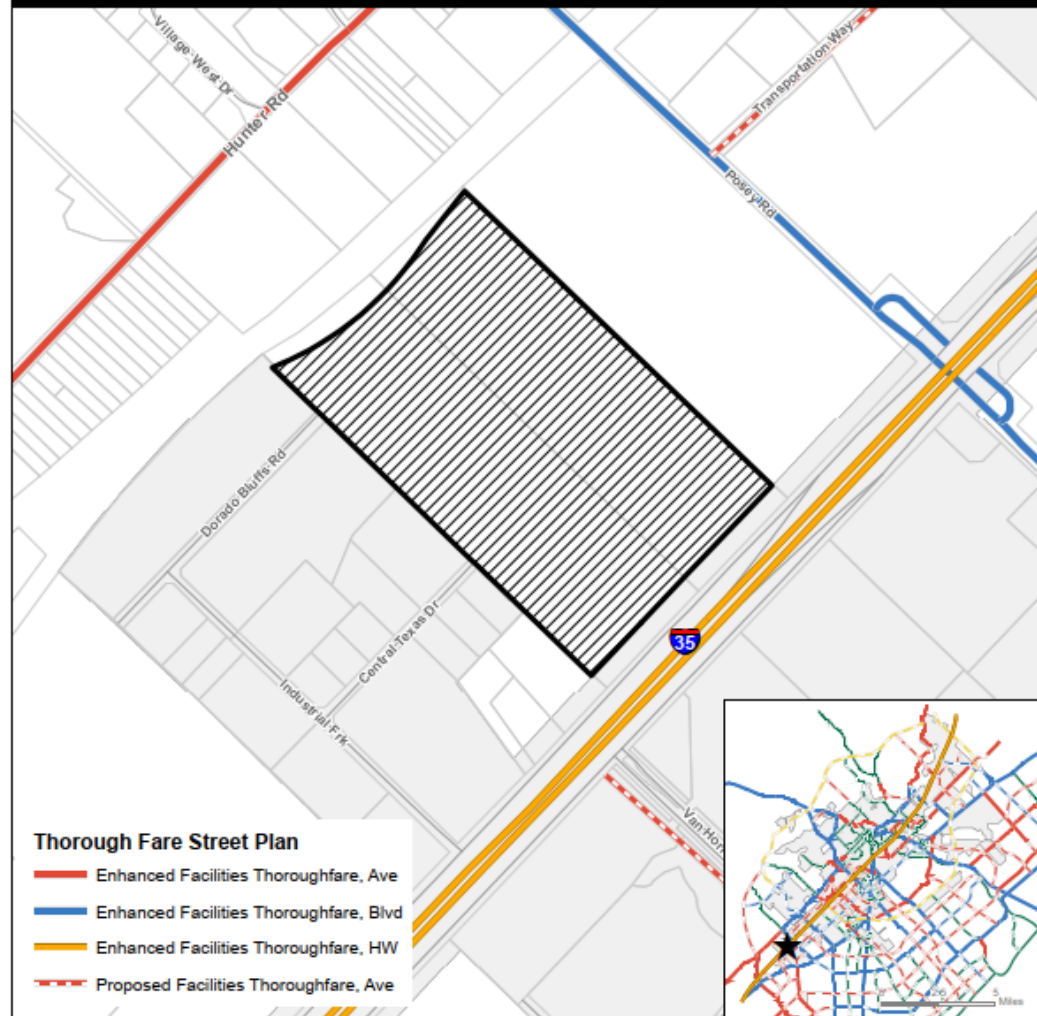
- Not located within the floodway or 100-year floodplain.
- Not located within the Edwards Aquifer Recharge Zone, Contributing Zone, or Transition Zone.
- Majority of site shown as "least-moderately constrained" on the Land Use Suitability Map.

## AN-22-12 Environmental Features Hampton Business Park — 5300BLK S IH 35





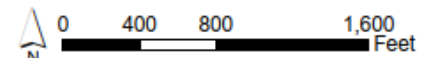
# AN-22-12 Transportation Master Plan Hampton Business Park Annexation— 5300BLK S IH 35



**Thorough Fare Street Plan**

- Enhanced Facilities Thoroughfare, Ave
- Enhanced Facilities Thoroughfare, Blvd
- Enhanced Facilities Thoroughfare, HW
- Proposed Facilities Thoroughfare, Ave

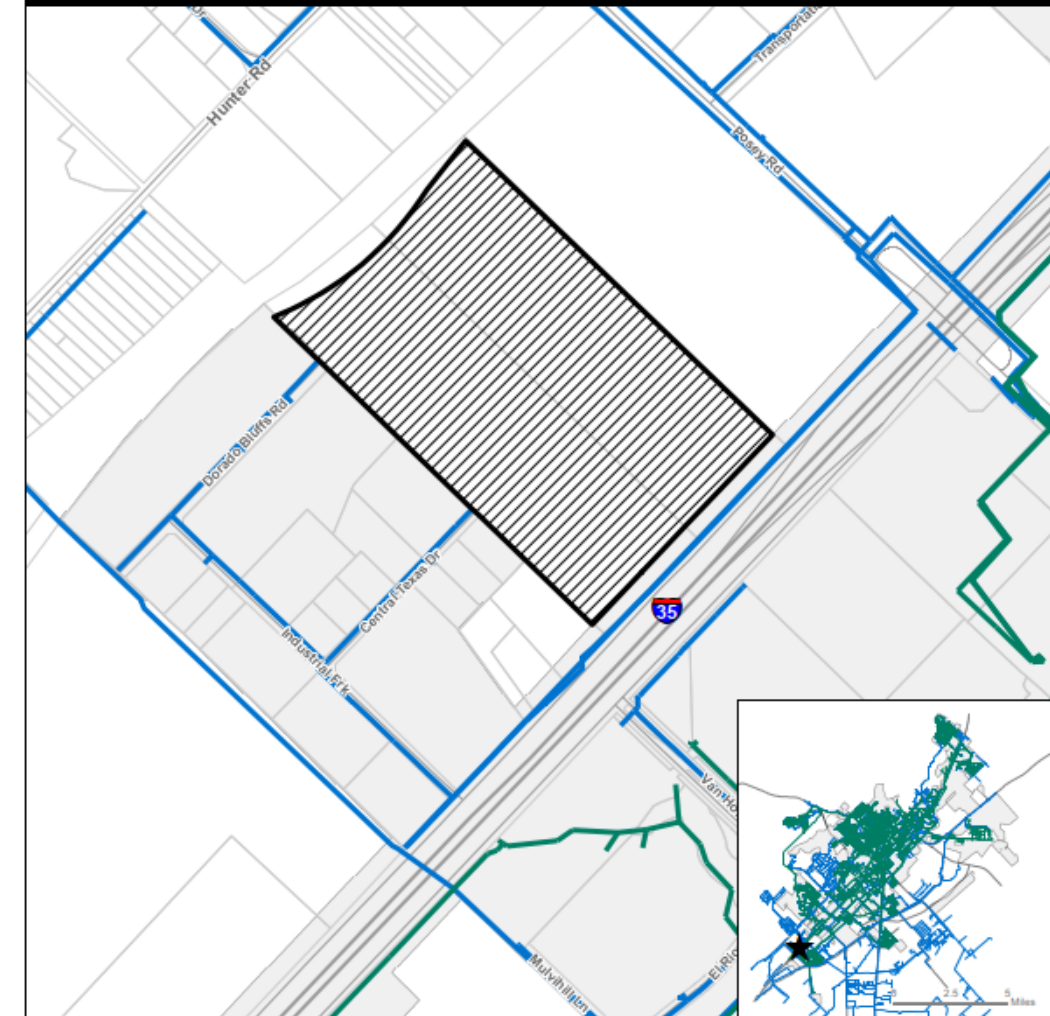
- ★ Site Location
- ▨ Subject Property
- Parcels
- City Limit



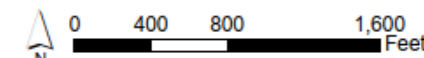
This product is for informational purposes and may not have been prepared for or be suitable for legal, engineering, or surveying purposes. It does not represent an on-the-ground survey and represents only the approximate relative location of property boundaries.

Map Date: 5/11/2022

# AN-22-12 Water/Wastewater Lines Hampton Business Park Annexation — 5300BLK S IH 35



- ★ Site Location
- ▨ Subject Property
- Parcels
- City Limit
- Sanitary Main
- Water Main



This product is for informational purposes and may not have been prepared for or be suitable for legal, engineering, or surveying purposes. It does not represent an on-the-ground survey and represents only the approximate relative location of property boundaries.

Map Date: 5/11/2022



# Annexation and Zoning Schedule

## Annexation Schedule

- **City Council Resolution (Approval of Service Agreement and set a public hearing date):**  
June 7, 2022
  - **City Council Ordinance 1<sup>st</sup> Reading (Public Hearing):** Aug 16, 2022 (*Today*)
  - **City Council Ordinance 2<sup>nd</sup> Reading:** Sep 6, 2022
- 

## Zoning Schedule

- **Planning and Zoning Commission (Public Hearing):** July 12, 2022
- **City Council Ordinance 1<sup>st</sup> Reading (Public Hearing):** Aug 16, 2022 (*Today*)
- **City Council Ordinance 2<sup>nd</sup> Reading:** Sep 6, 2022



## Recommendation

- Staff recommends **approval** of the request as presented.